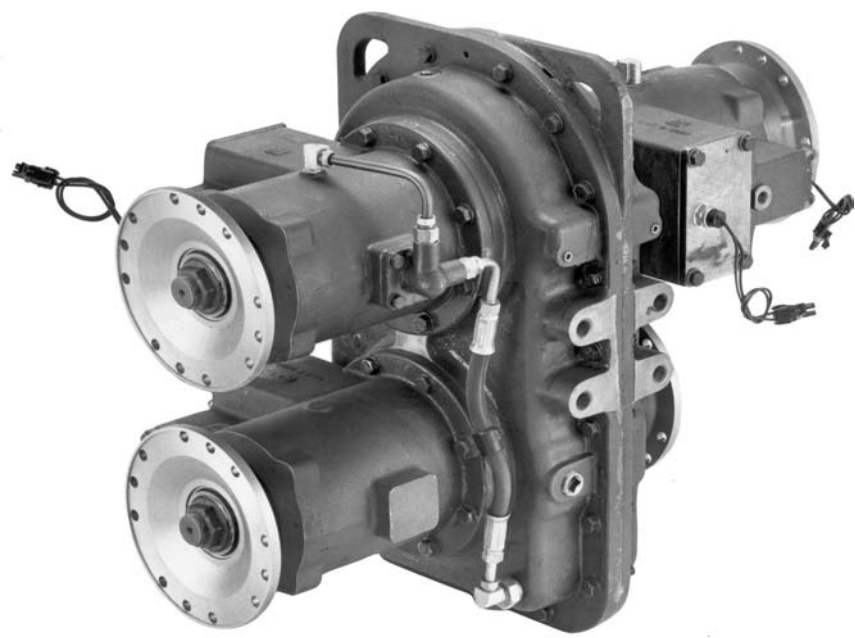


T-2120A-RS Transfer Case

Catalog PB-9522



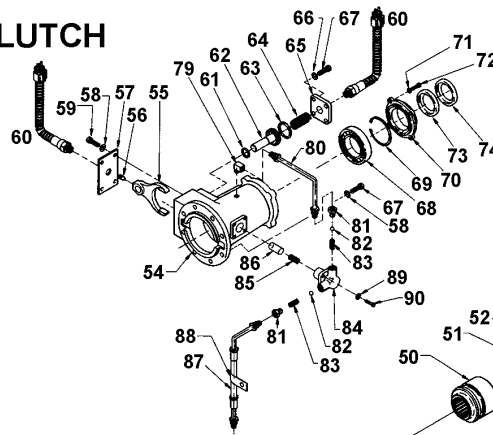
Strength • Power • Speed • Agility

INTRODUCTION

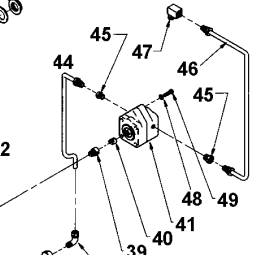
- This parts book is designed so that you can look up part numbers in two different ways.
 1. If you know the model number of the transfer case, for example, if the model number is T-2120A-RS100, you simply match the item number on the picture with the item number in the parts list. The parts list shows which part number is used on each model.
 2. If you don't know the model number, the description column in the parts list has descriptions of the different part numbers that are used on different models.
- All Meritor gears and shafts are marked with the check letter and final digits of the part number, for example, F-5024 or X-2442.
- When you service gears, Meritor recommends that you replace all mating gears.
- You must use the correct tools and maintenance procedures. Use general service instructions from Meritor Maintenance Manual MM03E. To order this publication, call Meritor's Customer Service Center at 800-535-5560.
- Service kits include parts to service all the different models covered by this book. Kits may include extra parts that you do not need. In addition to kits, individual parts are also available.
- For service parts, contact ArvinMeritor Commercial Vehicle Aftermarket, Florence, KY at 888-725-9355. In Canada, 800-668-3508/option 7.

P.T.O / DECLUTCH

#1

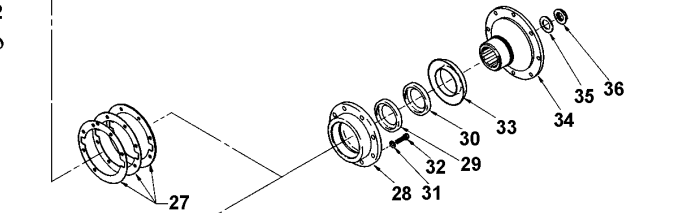
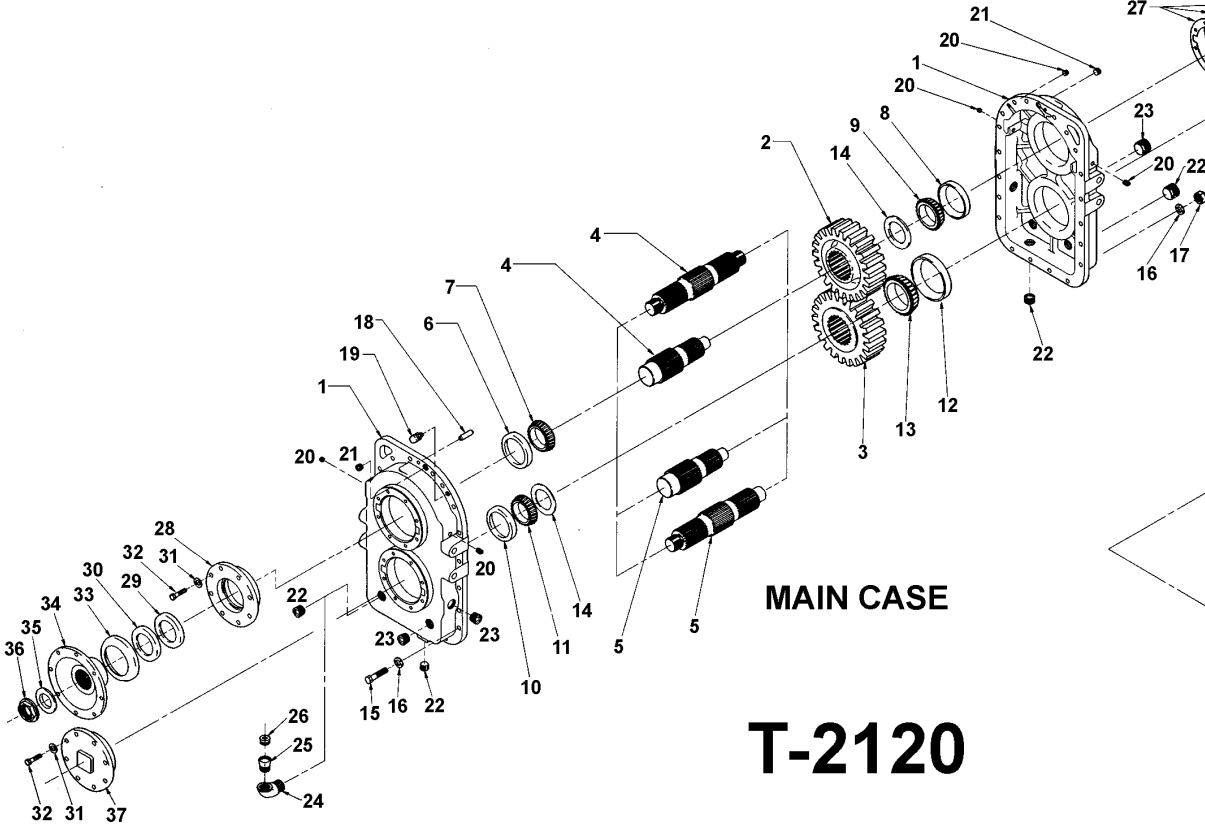


OIL PUMP



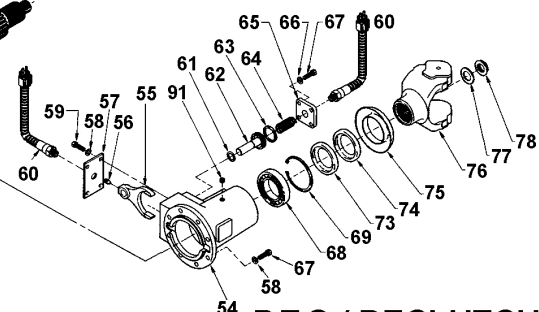
MAIN CASE

T-2120



P.T.O / DECLUTCH

#2



NOTE: PARTS SHOWN ARE NOT USED ON ALL MODELS.

TABLE OF CONTENTS

| | Page |
|--|-----------|
| T-2120 Series Supercessions | 2 |
| T-2120 Series Options | 3 |
| T-2120 Series Service Kit Reference | 3 |
| T-2120 Series Service Kits | |
| Declutch Miscellaneous Parts | 4 |
| Main Case Fasteners | 4 |
| Main Case Bearings/Shims/Spacers..... | 4 |
| T-2120 Series Transfer Case | |
| Main Case..... | 6 |
| Pump - Main Shaft | 12 |
| Declutch | 13 |
| Numerical Parts Listing | 21 |

T-2120 SERIES SUPERSESSIONS

| MODEL | RELEASE DATE | REPLACES MODEL | RELEASE DATE | REPLACED BY |
|---------------|--------------|----------------|--------------|---------------|
| T-2120A-RS100 | Jul-91 | | | T-2120A-RS101 |
| T-2120A-RS101 | Jul-91 | T-2120A-RS100 | Jul-91 | T-2120A-RS102 |
| T-2120A-RS102 | Sep-92 | T-2120A-RS101 | Jul-91 | |
| T-2120A-RS300 | Aug-93 | | | |
| T-2120A-RS400 | Jun-91 | | | T-2120A-RS404 |
| T-2120A-RS402 | Sep-94 | | | |
| T-2120A-RS403 | Sep-93 | | | |
| T-2120A-RS404 | Mar-94 | T-2120A-RS400 | Jun-91 | |
| T-2120A-RS405 | Aug-94 | | | |
| T-2120A-RS406 | Aug-94 | | | |
| T-2120A-RS900 | Dec-91 | | | |

T-2120 SERIES OPTIONS

| MODEL | P.T.O | W/PUMP | DECLUTCH | AIR CYLINDER ASSY. | FLANGE/YOKE | | | |
|---------------|--------|--------|----------|--------------------------|----------------|-----------------|---------------|----------------|
| | | | | | FRONT INPUT | FRONT OUTPUT | REAR INPUT | REAR OUTPUT |
| T-2120A-RS100 | X | X (2)* | X (3) | X | | X (2)** | X | X (1)** |
| T-2120A-RS101 | X | X (2)* | X (3) | X | | X (2)** | X | X (1)** |
| T-2120A-RS102 | X | X (2)* | X (3) | X | | X (2)** | X | X (1)** |
| T-2120A-RS300 | X | | X | X | X | X | | X |
| T-2120A-RS400 | X (2)* | X | X (2)* | X | X | X | | X |
| T-2120A-RS402 | X (2)* | X | X (2)* | X | X | X | | X |
| T-2120A-RS403 | X (2)* | X | X (2)* | X | X | X | | X |
| T-2120A-RS404 | X (2)* | X | X (2)* | X | X | X | | X |
| T-2120A-RS405 | X (2)* | X | X (2)* | X | X | X | | X |
| T-2120A-RS406 | X | | X | X | X | X | | X |
| T-2120A-RS900 | | | | | X | X | | |

* Options marked with a single asteric have more than one of these features qty. shown in ().

** The ARS100 series have front and rear sheave drive declutch assemblies on the top shaft.

T-2120 SERIES SERVICE KIT REFERENCE

| MODEL | KIT | KIT | KIT | KIT | KIT | KIT |
|---------------|----------|----------|----------|----------|----------|----------|
| | T-2120-1 | T-2120-2 | T-2120-3 | T-2120-4 | T-2120-5 | T-2120-6 |
| T-2120A-RS100 | X | | X | | X | X |
| T-2120A-RS101 | X | | X | | X | X |
| T-2120A-RS102 | X | | X | | X | X |
| T-2120A-RS300 | | X | X | X | | X |
| T-2120A-RS400 | X | | X | X | | X |
| T-2120A-RS402 | X | | X | X | | X |
| T-2120A-RS403 | X | | X | X | | X |
| T-2120A-RS404 | X | | X | X | | X |
| T-2120A-RS405 | X | | X | X | | X |
| T-2120A-RS406 | | X | X | X | | X |
| T-2120A-RS900 | | X | X | X | | |

T-2120 SERIES SERVICE KITS

KIT T-2120-1

MAIN CASE BEARINGS/SHIMS/SPACERS

| ITEM | QTY | PART NUMBER | DESCRIPTION | REMARKS |
|------|-----|---------------|--------------------------------|---------|
| 1 | 3 | 832 | Bearing cup | |
| 2 | 3 | 835 | Bearing cone | |
| 3 | 1 | 65500 | Bearing cup | |
| 4 | 1 | 65225 | Bearing cone | |
| 5 | 14 | 2803-Z-2704 | Shim-bearing cage 0.010" thick | |
| 6 | 6 | 2803-A-2705 | Shim-bearing cage 0.005" thick | |
| 7 | 6 | 2803-B-2706 | Shim-bearing cage 0.003" thick | |
| 8 | 2 | A-1205-U-1529 | Inner seal | |
| 9 | 2 | A-1205-A-2107 | Outer seal | |
| 10 | 2 | 1244-S-2047 | Spacer | |

KIT T-2120-2

MAIN CASE BEARINGS/SHIMS/SPACERS

| ITEM | QTY | PART NUMBER | DESCRIPTION | REMARKS |
|------|-----|---------------|--------------------------------|---------|
| 1 | 2 | 832 | Bearing cup | |
| 2 | 2 | 835 | Bearing cone | |
| 3 | 2 | 65500 | Bearing cup | |
| 4 | 2 | 65225 | Bearing cone | |
| 5 | 14 | 2803-Z-2704 | Shim-bearing cage 0.010" thick | |
| 6 | 6 | 2803-A-2705 | Shim-bearing cage 0.005" thick | |
| 7 | 6 | 2803-B-2706 | Shim-bearing cage 0.003" thick | |
| 8 | 2 | A-1205-U-1529 | Inner seal | |
| 9 | 2 | A-1205-A-2107 | Outer seal | |
| 10 | 2 | 1244-S-2047 | Spacer | |

KIT T-2120-3

MAIN CASE FASTENERS

| ITEM | QTY | PART NUMBER | DESCRIPTION | REMARKS |
|------|-----|-------------|------------------------------|---------|
| 1 | 20 | S-2718-2 | Capscrew-case halves | |
| 2 | 72 | 1229-E-1513 | Washer-case halves; cage/cap | |
| 3 | 20 | NL-27-1 | Nut-case halves | |
| 4 | 2 | 1846-Z-312 | Dowel-case halves | |
| 5 | 32 | S-2710-2 | Capscrew-cage/cap | |

KIT T-2120-4

DECLUTCH BEARINGS/SHIMS

| ITEM | QTY | PART NUMBER | DESCRIPTION | REMARKS |
|------|-----|---------------|------------------------------|---------|
| 1 | 1 | 1228-Z-1222 | Declutch shaft inner bearing | |
| 2 | 1 | 1228-N-1262 | Declutch shaft outer bearing | |
| 3 | 1 | 1854-C-315 | Snap ring | |
| 4 | 1 | A-1205-A-2107 | Outer seal | |
| 5 | 1 | A-1205-U-1529 | Inner seal | |
| 6 | 1 | 5-X-1137 | Quad Ring-shift piston inner | |
| 7 | 1 | 5-X-1138 | Quad Ring-shift piston outer | |

T-2120 SERIES SERVICE KITS (Continued)

KIT T-2120-5

DECLUTCH BEARINGS/SHIMS

| ITEM | QTY | PART NUMBER | DESCRIPTION | REMARKS |
|------|-----|---------------|------------------------------|---------|
| 1 | 1 | 1228-Z-1222 | Declutch shaft inner bearing | |
| 2 | 1 | 1228-P-250 | Declutch shaft outer bearing | |
| 3 | 1 | 1854-R-330 | Snap ring | |
| 4 | 1 | A-1205-B-2108 | Outer seal | |
| 5 | 1 | A-1205-B-1198 | Inner seal | |
| 6 | 1 | 5-X-1137 | Quad Ring-shift piston inner | |
| 7 | 1 | 5-X-1138 | Quad Ring-shift piston outer | |

KIT T-2120-6

DECLUTCH FASTENERS

| ITEM | QTY | PART NUMBER | DESCRIPTION | REMARKS |
|------|-----|-------------|--------------------------|---------|
| 1 | 8 | S-268-2 | Capscrew-shift covers | |
| 2 | 8 | 1229-K-1597 | Washer-shift covers | |
| 3 | 4 | S-256P-2 | Capscrew- pump attaching | |
| 4 | 4 | 1229-E-1669 | Washer-pump attaching | |
| 5 | 4 | S-2710-2 | Capscrew-bearing cover | |
| 6 | 4 | 1229-E-1513 | Washer-bearing cover | |
| 7 | 1 | 26-X-1008 | Set screw-shift fork | |

T-2120 SERIES MAIN CASE

| ITEM | PART NAME | MODEL | QTY | PART NUMBER | DESCRIPTION |
|------|-------------------------------|--|-----|----------------------|--|
| 1 | Case half-Transfer | All | 2 | 3290-Y-1065 | 3290-X-1064 cast, 24.17" long, 20 holes 0.47" dia. thru, 3.70" wide, 0.38"-18 N.P.S.F. breather hole. |
| 2 | Gear-driven, Helical upper | All | 1 | 3892-X-5250 | 3892-W-5249 forging, 3.91"-30T, 9.97" O.D., 30 splines, 2.75" thick. |
| 3 | Gear-Helical, lower | All | 1 | 3892-Y-5251 | 3892-W-5249 forging, 3.91"-30T, 10.24" O.D., 30 splines, 2.75" thick. |
| 4 | Shaft-upper | ARS100 ARS101 ARS102 | 1 | 3297-K-1181 | 17.51" overall length, 2.20"-43T spline each end, 3.88"-30T center spline. Use with front and rear (dual) declutch. |
| | | ARS300 | 1 | 3297-Q-1187 | 14.09" overall length, 2.10"-41T spline each end, 3.88"-30T center spline, 1.25"-12 UNF thread both ends. |
| | | ARS400 ARS402 ARS403 ARS404 ARS405 | 1 | 3297-J-1180 | 15.80" overall length, 2.10"-41T spline, 1.25"-12 UNF thread one end, 2.20"-43T spline other end, 3.88"-30T center spline. Use with single declutch. |
| | | ARS900 ARS406 | 1 | 3297-P-1368 | 10.49" overall length, 2 splines, 2.10"-41T spline and 3.88"-30T spline, 1.25"-12 UNF thread on one end. |
| 5 | Shaft-lower | ARS100 ARS101 ARS102 ARS406 | 1 | 3297-J-1180 | 15.80" overall length, 2.10"-41T spline, 1.25"-12 UNF thread one end, 2.20"-43T spline other end, 3.88"-30T center spline. Use with single declutch. |
| | | ARS300 ARS400 ARS402 ARS403 | 1 | 3297-P-1186 | 12.20" overall length, 2 splines, 3.88"-30T spline and 2.20"-43T spline with 1.87" diameter brg. journal at one end (for declutch shaft) other end 2.75" brg. journal. Use with front or rear (single) declutch. |
| | | ARS404 ARS405 | 1 | A-3297-P-1186 | Same as P-1186 except with a pump drive button in the 2.75" diameter end of the shaft, item 39 (6423). |
| | | ARS900 | 2 | 3297-P-1368 | 10.49" overall length, 2.13"-41T spline, 1.25"-12 UNF thread on one end. |
| 6 | Bearing cup-upper shaft front | ARS100 ARS101 ARS102 ARS300 ARS400 ARS402 ARS403 ARS404 ARS405 | 1 | 832 | 0.63" cup O.D. |
| | | ARS406 ARS900 | 1 | 65500 | 0.94" cup O.D. |

T-2120 SERIES MAIN CASE

| ITEM | PART NAME | MODEL | QTY | PART NUMBER | DESCRIPTION |
|------|--------------------------------|--|-----|--------------|----------------|
| 7 | Bearing cone-upper shaft front | ARS100 ARS101 ARS102 ARS300 ARS400 ARS402 ARS403 ARS404 ARS405 | 1 | 835 | 2.75" bore. |
| | | ARS406 ARS900 | 1 | 65225 | 2.25" bore. |
| 8 | Bearing cup-upper shaft rear | ARS100 ARS101 ARS102 ARS300 ARS400 ARS402 ARS403 ARS404 ARS405 ARS406 ARS900 | 1 | 832 | 0.63" cup O.D. |
| 9 | Bearing cone-upper shaft rear | ARS100 ARS101 ARS102 ARS300 ARS400 ARS402 ARS403 ARS404 ARS405 ARS406 ARS900 | 1 | 835 | 2.75" bore. |
| 10 | Bearing cup-lower shaft front | ARS100 ARS101 ARS102 ARS406 | 1 | 832 | 0.63" cup O.D. |
| | | ARS300 ARS400 ARS402 ARS403 ARS404 ARS405 ARS900 | 1 | 65500 | 0.94" cup O.D. |

T-2120 SERIES MAIN CASE

| ITEM | PART NAME | MODEL | QTY | PART NUMBER | DESCRIPTION |
|------|--------------------------------|--|-----|--------------------|--|
| 11 | Bearing cone-lower shaft front | ARS100 ARS101 ARS102 ARS406 | 1 | 835 | 2.75" bore. |
| | | ARS300 ARS400 ARS402 ARS403 ARS404 ARS405 ARS900 | 1 | 65225 | 2.25" bore. |
| 12 | Bearing cup-lower shaft rear | ARS100 ARS101 ARS102 ARS300 ARS406 | 1 | 65500 | 0.94" cup O.D. |
| | | ARS400 ARS402 ARS403 ARS404 ARS405 ARS900 | 1 | 832 | 0.63" cup O.D. |
| 13 | Bearing cone-lower shaft rear | ARS100 ARS101 ARS102 ARS300 ARS406 | 1 | 65225 | 2.25" bore. |
| | | ARS400 ARS402 ARS403 ARS404 ARS405 ARS900 | 1 | 835 | 2.75" bore. |
| 14 | Spacer-gear | ARS100 ARS101 ARS102 ARS400 ARS402 ARS403 ARS404 ARS405 ARS406 | 1 | 1244-S-2047 | 4.50" O.D., 2.31" I.D., 0.30" thickness. |
| | | ARS300 ARS900 | 2 | | |
| 15 | Capscrew-case | All | 20 | S-2718-2 | Hex head, 0.44"-14 thread, 2.25" long measured under the head to the end, grade 8. |
| 16 | Washer-case | All | 40 | 1229-E-1513 | 0.81" O.D., 0.47" I.D., 0.09" thickness. |
| 17 | Nut-case | All | 20 | NL-27-1 | Hex lock, 0.44"-14 thread, grade 8. |

T-2120 SERIES MAIN CASE

| ITEM | PART NAME | MODEL | QTY | PART NUMBER | DESCRIPTION |
|------|-------------------|--|------------------|----------------------|---|
| 18 | Dowel-case | All | 2 | 1846-Z-312 | Cylindrical shape 0.38" diameter, 1.00" long. |
| 19 | Breather Assy. | All | 1 | A-1199-C-1043 | 0.13"-27 N.P.T.F. thread, 1.03" long, available as assembly only, cap and body. |
| 20 | Plug-non-magnetic | ARS100 ARS101 ARS102 ARS300 ARS400 ARS402 ARS403 ARS404 ARS405 ARS406 ARS900 | 5 | P-42 | 0.13"-27 N.P.S.F. |
| 21 | Plug-non-magnetic | ARS404 ARS405 ARS406 | 2 | P-26 | 0.38"-18 N.P.S.F. |
| 22 | Plug-magnetic | All | 2 | 1850-T-150 | 0.75"-14 P.T.F., SAE short. |
| 23 | Plug-non-magnetic | ARS100 ARS101 ARS102 ARS400 ARS402 ARS403 ARS300 ARS404 ARS405 ARS406 ARS900 | 2 3 6 5 | P-212 | 0.75"-14 N.P.S.F. |
| 24 | Elbow | ARS102 ARS300 ARS400 ARS402 ARS403 ARS404 ARS405 ARS406 ARS900 | 1 | 1898-S-201 | 0.75"-14 N.P.S.F. thread, 90 degrees. |
| 25 | Reducer-thread | ARS102 ARS300 ARS404 ARS405 ARS406 ARS900 | 1 | 2206-J-62 | 0.50"-14 N.P.T.F., 1.17" long, 1.12" across flats (hex head). |
| 26 | Plug-non-magnetic | ARS102 ARS300 ARS404 ARS405 ARS406 ARS900 | 1 | P-28 | 0.50"-14 N.P.S.F. |

T-2120 SERIES MAIN CASE

| ITEM | PART NAME | MODEL | QTY | PART NUMBER | DESCRIPTION |
|------|------------------------|--|-----|----------------------|---|
| 27 | Shim-bearing cage | All | 14 | 2803-Z-2704 | 8 holes 0.47" on 7.63" bolt circle 0.010" thick. |
| | | | 6 | 2803-A-2705 | 8 holes 0.47" on 7.63" bolt circle 0.005" thick. |
| | | | 6 | 2803-B-2706 | 8 holes 0.47" on 7.63" bolt circle 0.003" thick. |
| 28 | Cage-input shaft assy. | ARS400 ARS402 ARS403 ARS404 ARS405 | 1 | A-3226-Y-1247 | 3226-X-1246 cast, 8 holes 0.47" diameter on 7.63" bolt circle, 8 cored slots equally spaced 0.80" wide, includes bearing cup part number 65500, available as assembly only. |
| | | ARS300 ARS406 ARS900 | 2 | | |
| 29 | Seal, Inner | ARS100 ARS101 ARS102 ARS300 ARS400 ARS402 ARS403 ARS404 ARS405 | 1 | A-1205-U-1529 | Seal outer diameter is 4.01", thickness is 0.50", and fits a shaft diameter of 2.94". |
| | | ARS406 ARS900 | 2 | | |
| 30 | Seal, Outer | ARS100 ARS101 ARS102 ARS300 ARS400 ARS402 ARS403 ARS404 ARS405 | 1 | A-1205-A-2107 | Seal outer diameter is 4.01", thickness is 0.30", and fits a shaft diameter of 3.00". |
| | | ARS406 ARS900 | 2 | | |
| 31 | Washer-cage or cap | All | 32 | 1229-E-1513 | 0.81" O.D., 0.47" I.D., 0.09" thick. |
| 32 | Capscrew-cage or cap | All | 32 | S-2710-2 | Hex head scapscrew 0.44"-14 thd, 1.25" long measured under the head to the end, grade 8. |
| 33 | Deflector | None | - | - | Not used on T-2120 models in this book. |
| 34 | Yoke | ARS100 ARS101 ARS102 ARS405 | 1 | 3260-B-1458 | 5WCS33-3, 12 holes 0.45" diameter on 7.25" bolt circle, 3.27" long 2.10"-41T spline. |
| | | ARS300 ARS403 | 2 | 3260-D-1512 | 18NYS, 2.13"-41T spline, 3.50" end hub to center assembly. |
| | | ARS400 ARS402 ARS404 | 1 | 3260-D-1460 | 17NYS yoke, 3.50" end hub to center assembly, 2.13"-41T spline. |
| | | ARS406 ARS900 | 2 | | |

T-2120 SERIES MAIN CASE

| ITEM | PART NAME | MODEL | QTY | PART NUMBER | DESCRIPTION |
|------|--------------------|--------|-----|-------------|--|
| 35 | Washer-Yoke | ARS100 | 1 | 1229-T-1450 | 2.58" O.D., 1.28" I.D., 0.23" thick. |
| | | ARS101 | | | |
| | | ARS102 | | | |
| | | ARS400 | | | |
| | | ARS402 | | | |
| | | ARS403 | | | |
| | | ARS404 | | | |
| | | ARS405 | | | |
| | | ARS300 | 2 | | |
| | | ARS406 | | | |
| | | ARS900 | | | |
| 36 | Nut-Yoke | ARS100 | 1 | 1227-K-1051 | 1.25"-12 UNF-2B thread, 2.13" flange diameter 1.63" across flats (hex head), thickness is 0.63". |
| | | ARS101 | | | |
| | | ARS102 | | | |
| | | ARS400 | | | |
| | | ARS402 | | | |
| | | ARS403 | | | |
| | | ARS404 | | | |
| | | ARS405 | | | |
| | | ARS300 | 2 | | |
| | | ARS406 | | | |
| | | ARS900 | | | |
| 37 | Cover-Output shaft | ARS100 | 1 | 3266-Y-1247 | 3266-U-1269 cast, 8 holes 0.47" diameter on a 7.63" bolt circle, 8.63" O.D. 1.78" I.D., 8 cored slots equally spaced 0.80" wide. |
| | | ARS101 | | | |
| | | ARS102 | | | |
| | | ARS300 | | | |
| | | ARS400 | | | |
| | | ARS402 | | | |
| | | ARS403 | | | |
| | | ARS406 | | | |
| | | ARS900 | 2 | | |

T-2120 SERIES PUMP-MAIN SHAFT

| ITEM | PART NAME | MODEL | QTY | PART NUMBER | DESCRIPTION |
|------|-------------------------------------|------------------|-----|----------------------|---|
| 38 | Cover-plate | ARS404 ARS405 | 1 | 3266-V-1270 | Same as 3266-Y-1247 except machined to accept an external lube pump, 4 holes 0.32"-18 U.N.C. |
| 39 | Drive Button | ARS404 ARS405 | 1 | 2297-A-6423 | 0.94" long, 0.19" diameter thru, 0.75" O.D., keyway 0.26" x 0.22". |
| 40 | Coupling-pump drive | ARS404 ARS405 | 1 | 2207-W-1011 | Part measures 0.57" diameter, 0.57" long, has a 0.16" wide female slot one end and a 0.25" wide male drive "TAB" at the other end. |
| 41 | Pump assembly | ARS404 ARS405 | 1 | A-3303-Q-1005 | 0.34"-4 holes, 0.38"-18 N.P.T. 2 places, 4 holes 0.34" diameter. |
| 42 | Fitting-Hydraulic | ARS404 ARS405 | 1 | A-2206-D-56 | Fitting and screen assembly (2297-S-3841), 0.75"-14 N.P.T. male thread on one end, 0.25"-18 N.P.T. on the other end and measures 1.12" across flats (hex head). |
| 43 | Fitting assy.-elbow | ARS404 ARS405 | 1 | A-1898-U-645 | Elbow has a 0.25"-18 N.P.T.F. external thread on one end and accepts a 0.38" diameter tube on the other. |
| 44 | Tube assy. | ARS404 ARS405 | 1 | A-2296-T-1086 | Tube length before bending is 7.49" long, tube diameter is 0.38", 0.63"-18 UNF threaded connector 1898-G-241 one end, available as assembly only. |
| 45 | Fitting-connector | ARS404 ARS405 | 2 | 2206-W-1037 | Fitting has a male thread 0.38"-18 N.P.T. one end, female thread 0.63"-18 UNF on the other end 1.00" long and measures 0.75" across flats (hex head). |
| 46 | Hose-assy. flexible | ARS404 ARS405 | 1 | A-3196-B-1068 | Tube measures 22" to 90 degree bend, 0.63"-18 UNF threaded connector 1898-G-241, both ends, available as assembly only. |
| 47 | Elbow | ARS404 ARS405 | 1 | 1898-H-242 | Elbow has a 0.25"-18 N.P.T.F. external thread on one end and a 0.63"-18 thread port at the other, 1.25" tall. |
| 48 | Capscrew-pump attaching | ARS404 ARS405 | 4 | S-2528-1 | Hex head capscrew, 0.31"-18 thread, 3.50" long measured under the head to the end grade 8.2. |
| 49 | Washer-pump attaching cover mounted | ARS404 ARS405 | 4 | 1229-E-1669 | 0.62" O.D., 0.34" I.D., 0.06" thick. |

T-2120 SERIES DECLUTCH

| ITEM | PART NAME | MODEL | QTY | PART NUMBER | DESCRIPTION |
|------|------------------------------|--------|-----|----------------------|---|
| 50 | Collar-clutch | ARS100 | 3 | 3107-J-1102 | 3.35" long, 3.88" diameter, 1 end 2.21"- 43T spline, other end 3.16"- 24T spline with shift fork groove on O.D., 3.88" O.D., 2.25" I.D. |
| | | ARS101 | | | |
| | | ARS102 | | | |
| | | ARS400 | 2 | | |
| | | ARS402 | | | |
| | | ARS403 | | | |
| | | ARS404 | | | |
| | | ARS405 | | | |
| | | ARS300 | 1 | | |
| | | ARS406 | | | |
| 51 | Eccentric-pump drive | ARS100 | 2 | 2297-X-6420 | Sleeve is 4.69" O.D., 3.87" I.D., and 2.10" thickness. |
| | | ARS101 | | | |
| | | ARS102 | | | |
| | | ARS400 | 1 | | |
| | | ARS402 | | | |
| | | ARS403 | | | |
| 52 | Bearing-needle | ARS100 | 3 | 1228-Z-1222 | 2.25" O.D., 1.88" I.D., 1.00" wide, included in declutch shaft. |
| | | ARS101 | | | |
| | | ARS102 | | | |
| | | ARS300 | 1 | | |
| | | ARS406 | | | |
| | | ARS400 | 2 | | |
| | | ARS402 | | | |
| | | ARS403 | | | |
| | | ARS404 | | | |
| | | ARS405 | | | |
| | | ARS900 | | | |
| 53 | Shaft-output, declutch assy. | ARS100 | 1 | A-3297-L-1182 | 6.87" overall length, 2.10"-41T spline, 1.25"-12 UNF thread one end, 3.13"-24T spline other end (mates with clutch collar teeth), internal needle bearing assembly on declutch end. |
| | | ARS101 | | | |
| | | ARS102 | | | |
| | | ARS300 | | | |
| | | ARS406 | | | |
| | | ARS400 | 2 | | |
| | | ARS402 | | | |
| | | ARS403 | | | |
| | | ARS404 | | | |
| | | ARS405 | | | |
| | | ARS100 | 2 | A-3297-D-1278 | 12.00" overall length, round with 0.50" keyway at one end 3.12"-24T spline at other end (mates with clutch collar teeth) internal needle brg. assembly this end. |
| | | ARS101 | | | |
| | | ARS102 | | | |

T-2120 SERIES DECLUTCH

| ITEM | PART NAME | MODEL | QTY | PART NUMBER | DESCRIPTION | | |
|--------|------------------------|--------|-----|--------------------|--|--|--|
| 54 | Cage-bearing, declutch | ARS100 | 1 | 3226-Q-1265 | 3226-P-1264 cast, not machined for pump, 8 holes 0.47" diameter on 7.63 bolt circle. | | |
| | | ARS101 | | | | | |
| | | ARS102 | | | | | |
| | | ARS300 | | | | | |
| | | ARS400 | | | | | |
| | | ARS402 | | | | | |
| | | ARS403 | | | | | |
| | | ARS406 | | | | | |
| | | ARS404 | 2 | | | | |
| | | ARS405 | | | | | |
| | | ARS400 | 1 | 3226-E-1253 | Same as Q-1265 except, machined for pump, 8 holes-0.47" on 7.63" bolt circle. | | |
| | | ARS402 | | | | | |
| | | ARS403 | | | | | |
| | | | | | | | |
| | | ARS100 | 2 | 3226-N-1262 | 3262-M-1261 cast, machined for pump, 4 holes 0.44"-14 UNC on 6.38" bolt circle, 8 holes 0.47" dia. on 7.63" bolt circle. | | |
| | | ARS101 | | | | | |
| | | ARS102 | | | | | |
| | | | | | | | |
| 55 | Fork-shift | ARS100 | 3 | 3296-K-1155 | 3296-K-1154 cast, 0.53" thick, tangs 0.03" x 45 degrees typ., 2.89" between fork opening. | | |
| | | ARS101 | | | | | |
| | | ARS102 | | | | | |
| | | ARS300 | 1 | | | | |
| | | ARS406 | | | | | |
| | | ARS400 | 2 | | | | |
| ARS402 | | | | | | | |
| ARS403 | | | | | | | |
| ARS404 | | | | | | | |
| ARS405 | | | | | | | |
| 56 | Screw-set shift fork | ARS100 | 3 | 26-X-1008 | Socket head type with nylon locking feature, 0.72" long, 0.38"-24 UNF thread. | | |
| | | ARS101 | | | | | |
| | | ARS102 | | | | | |
| | | ARS300 | 1 | | | | |
| | | ARS406 | | | | | |
| | | ARS400 | 2 | | | | |
| ARS402 | | | | | | | |
| ARS403 | | | | | | | |
| ARS404 | | | | | | | |
| 57 | Cover-plate shift fork | ARS100 | 3 | 2205-C-1043 | Plate 3.00" x 2.60" rectangular, 4 holes 0.41" diameter, 1 hole 0.56"-18 UNF thread, 0.38" thickness. | | |
| | | ARS101 | | | | | |
| | | ARS102 | | | | | |
| | | ARS300 | 1 | | | | |
| | | ARS406 | | | | | |
| | | ARS400 | 2 | | | | |
| ARS402 | | | | | | | |
| ARS403 | | | | | | | |
| ARS404 | | | | | | | |
| | | ARS405 | | | | | |

T-2120 SERIES DECLUTCH

| ITEM | PART NAME | MODEL | QTY | PART NUMBER | DESCRIPTION |
|--------|------------------------------------|--------|-----|----------------------|--|
| 58 | Washer-shift fork cover declutch | ARS100 | 12 | 1229-K-1597 | 0.75" O.D., 0.41" I.D., 0.09" thick. |
| | | ARS101 | | | |
| | | ARS102 | | | |
| | | ARS300 | 4 | | |
| | | ARS406 | | | |
| | | ARS400 | 8 | | |
| ARS402 | | | | | |
| ARS403 | | | | | |
| ARS404 | | | | | |
| ARS405 | | | | | |
| 59 | Capscrew-shift fork cover declutch | ARS100 | 12 | S-268-2 | Hex head capscrew, 0.38"-16 thread, 1.00" long measured under the head to the end, grade 8. |
| | | ARS101 | | | |
| | | ARS102 | | | |
| | | ARS300 | 4 | | |
| | | ARS406 | | | |
| | | ARS400 | 8 | | |
| ARS402 | | | | | |
| ARS403 | | | | | |
| ARS404 | | | | | |
| ARS405 | | | | | |
| 60 | Switch assembly | ARS100 | 6 | A-3237-A-1041 | 13.30" overall length, and has two terminals (contacts), 0.88" across flats (hex head), chrome steel ball 0.34" dia., 18 gauge wire with SXL insulation, 2 places. |
| | | ARS101 | | | |
| | | ARS102 | | | |
| | | ARS300 | 2 | | |
| | | ARS406 | | | |
| | | ARS400 | 4 | | |
| ARS402 | | | | | |
| ARS403 | | | | | |
| ARS404 | | | | | |
| ARS405 | | | | | |
| 61 | Ring-quad inner | ARS100 | 3 | 5-X-1137 | 1.01" O.D., 0.73" I.D., 0.14" thick. |
| | | ARS101 | | | |
| | | ARS102 | | | |
| | | ARS300 | 1 | | |
| | | ARS406 | | | |
| | | ARS400 | 2 | | |
| ARS402 | | | | | |
| ARS403 | | | | | |
| ARS404 | | | | | |
| ARS405 | | | | | |
| 62 | Piston-shifter | ARS100 | 3 | 2230-K-1155 | 2230-K-1154 forging, 4.32" long, 0.75" O.D. one end, 1.00" O.D. other end, 0.25" diameter thru. |
| | | ARS101 | | | |
| | | ARS102 | | | |
| | | ARS300 | 1 | | |
| | | ARS406 | | | |
| | | ARS400 | 2 | | |
| ARS402 | | | | | |
| ARS403 | | | | | |
| ARS404 | | | | | |
| ARS405 | | | | | |

T-2120 SERIES DECLUTCH

| ITEM | PART NAME | MODEL | QTY | PART NUMBER | DESCRIPTION |
|--------|-------------------------------------|--------|-----|--------------------|---|
| 63 | Ring-quad outer | ARS100 | 3 | 5-X-1138 | 2.26" O.D., 1.98" I.D., 0.14" thick. |
| | | ARS101 | | | |
| | | ARS102 | | | |
| | | ARS300 | 1 | | |
| | | ARS406 | | | |
| | | ARS400 | 2 | | |
| | | ARS402 | | | |
| | | ARS403 | | | |
| | | ARS404 | | | |
| 64 | Spring-shifter | ARS100 | 3 | 2258-K-1233 | 1.60" O.D., free length is 4.25", and wire diameter is 0.15". |
| | | ARS101 | | | |
| | | ARS102 | | | |
| | | ARS300 | 1 | | |
| | | ARS406 | | | |
| | | ARS400 | 2 | | |
| | | ARS402 | | | |
| | | ARS403 | | | |
| | | ARS404 | | | |
| 65 | Cover-shift shaft | ARS100 | 3 | 2205-E-1045 | Plate 5.75" x 3.50" rectangular, 4 holes 0.41" diameter, 1 hole 0.56"-18 UNF thread, 0.30" thickness. |
| | | ARS101 | | | |
| | | ARS102 | | | |
| | | ARS300 | 1 | | |
| | | ARS406 | | | |
| | | ARS400 | 2 | | |
| | | ARS402 | | | |
| | | ARS403 | | | |
| | | ARS404 | | | |
| 66 | Washer-shift shaft cover declutch | ARS100 | 12 | 1229-K-1597 | 0.75" O.D., 0.41" I.D., 0.09" thick. |
| | | ARS101 | | | |
| | | ARS102 | | | |
| | | ARS300 | 4 | | |
| | | ARS406 | | | |
| | | ARS400 | 8 | | |
| | | ARS402 | | | |
| | | ARS403 | | | |
| | | ARS404 | | | |
| 67 | Capscrew-shift shaft cover declutch | ARS100 | 12 | S-268-2 | Hex head capscrew, 0.38"-16 thread, 1.00" long measured under the head to the end, grade 8. |
| | | ARS101 | | | |
| | | ARS102 | | | |
| | | ARS300 | 4 | | |
| | | ARS406 | | | |
| | | ARS400 | 8 | | |
| | | ARS402 | | | |
| | | ARS403 | | | |
| | | ARS404 | | | |
| ARS405 | | | | | |

T-2120 SERIES DECLUTCH

| ITEM | PART NAME | MODEL | QTY | PART NUMBER | DESCRIPTION |
|------|----------------------------|--|-----|----------------------|--|
| 68 | Bearing-ball, declutch | ARS100 ARS101 ARS102 ARS300 ARS406 | 1 | 1228-N-1262 | Bearing 3.94" O.D., 2.17" I.D., and 0.82" thickness. |
| | | ARS400 ARS402 ARS403 ARS404 ARS405 | 2 | | |
| | | ARS100 ARS101 ARS102 | 2 | | |
| 69 | Ring-snap bearing retainer | ARS100 ARS101 ARS102 ARS300 ARS406 | 1 | 1854-C-315 | Fits 4.06" internal groove in cage, 4.06" O.D., 3.84" I.D., 0.10" thick. |
| | | ARS400 ARS402 ARS403 ARS404 ARS405 | 2 | | |
| | | ARS100 ARS101 ARS102 | 2 | | |
| 70 | Cover-declutch | ARS100 ARS101 ARS102 | 2 | 3266-R-1266 | 3266-Q-1265 cast, has 4 holes 0.47" diameter on a 6.38" bolt circle, 1.38" thick, 6.50" O.D. |
| 71 | Washer-cage or cap | ARS100 ARS101 ARS102 | 8 | 1229-E-1513 | 0.81" O.D., 0.47" I.D., 0.09" thick. |
| 72 | Capscrew-cage or cap | ARS100 ARS101 ARS102 | 8 | S-2710-2 | Hex head capscrew 0.44"-14 thd, 1.25" long measured under the head to the end, grade 8. |
| 73 | Seal, inner | ARS100 ARS101 ARS102 | 2 | A-1205-B-1198 | 3.36" O.D., 0.48" thickness, and fits a shaft diameter of 2.38". |
| | | ARS100 ARS101 ARS102 ARS300 ARS406 | 1 | A-1205-U-1529 | 4.01" O.D., 0.45" thickness, and fits a shaft diameter of 2.94". |
| | | ARS400 ARS402 ARS403 ARS404 ARS405 | 2 | | |

T-2120 SERIES DECLUTCH

| ITEM | PART NAME | MODEL | QTY | PART NUMBER | DESCRIPTION |
|--|-------------|--|-----|----------------------|---|
| 74 | Seal, outer | ARS100 | 2 | A-1205-B-2108 | 3.36" O.D., 0.27" thickness, and fits a shaft diameter of 2.38". |
| | | ARS101 ARS102 | | | |
| | | ARS100 ARS101 ARS102 ARS300 ARS406 | 1 | A-1205-A-2107 | 4.01" O.D., 0.27" thickness, and fits a shaft diameter of 3.00". |
| ARS400 ARS402 ARS403 ARS404 ARS405 | 2 | | | | |
| 75 | Deflector | None | - | - | Not used on T-2120 models in this book |
| 76 | Yoke | ARS100 ARS101 ARS102 ARS405 ARS406 | 1 | 3260-B-1458 | 5WCS33-3, 12 holes 0.45" diameter on 7.25" bolt circle, 3.27" long, 2.10"-41T spline. |
| | | ARS300 ARS403 | 1 | 3260-D-1512 | 18NYS, 2.13"-41T spline, 3.50" end hub to cross assembly. |
| | | ARS400 ARS403 ARS404 ARS405 | 1 | 3260-B-1510 | 155TYS, 2.13"-41T spline, 2.94" end hub to cross assembly. |
| | | ARS400 ARS404 | 1 | 3260-D-1460 | 17NYS, 17N yoke, 3.50" end hub to center assembly, 2.13"-41T spline. |
| | | ARS402 | 2 | | |
| 77 | Washer-Yoke | ARS100 ARS101 ARS102 ARS300 ARS406 | 1 | 1229-T-1450 | 2.58" O.D., 1.28" I.D., 0.23" thick. |
| | | ARS400 ARS402 ARS403 ARS404 ARS405 | | | |
| 78 | Nut-Yoke | ARS100 ARS101 ARS102 ARS300 ARS406 | 1 | 1227-K-1051 | 1.25"-12 UNF thread, 2.13" flange diameter, 1.63" across flats (hex head), 0.63" thickness. |
| | | ARS400 ARS402 ARS403 ARS404 ARS405 | 2 | | |

T-2120 SERIES DECLUTCH

| ITEM | PART NAME | MODEL | QTY | PART NUMBER | DESCRIPTION |
|------|--------------------------------|--|-----|----------------------|---|
| 79 | Plug-non-magnetic | ARS100 ARS101 ARS102 ARS300 ARS400 ARS402 ARS403 ARS406 | 1 | P-24 | 0.25"-14 N.P.S.F. |
| | | ARS404 ARS405 | 2 | | |
| 79 | Elbow | ARS100 ARS101 ARS102 | 4 | 1898-H-242 | Elbow 0.25"-18 N.P.T.F. external thread on one end and 0.63"-18 thread port at the other, 1.25" tall. |
| | | ARS400 ARS402 ARS403 | 2 | | |
| 80 | Tube assembly | ARS100 ARS101 ARS102 | 2 | A-2296-B-1042 | 4.89" long, 90 degree bend, 6.61" tube length before bending, one 0.56"-18 threaded connector, 1898-G-241 each end, available as assembly only. |
| | | ARS400 ARS402 ARS403 | 1 | | |
| 81 | Fitting-inlet/outlet pump body | ARS100 ARS101 ARS102 | 4 | 1898-E-239 | 0.50"-20 N.F. THD., 1.00" long, 0.75" across flats (hex head). |
| | | ARS400 ARS402 ARS403 | 2 | | |
| 82 | Ball | ARS100 ARS101 ARS102 | 4 | 1228-K-37 | Ball 0.375" diameter. |
| | | ARS400 ARS402 ARS403 | 2 | | |
| 83 | Spring-ball | ARS100 ARS101 ARS102 | 4 | 2858-X-102 | Tapered coil spring, 0.31" O.D. small end, 0.40" O.D. large end, wire diameter 0.02", free length 0.48". |
| | | ARS400 ARS402 ARS403 | 2 | | |
| 84 | Pump body | ARS100 ARS101 ARS102 | 2 | 2847-Q-303 | 2847-X-908 cast, has 4 drilled holes in flange 0.33" and 2 threaded ports 0.50"-20 UNF. |
| | | ARS400 ARS402 ARS403 | 1 | | |

T-2120 SERIES DECLUTCH

| ITEM | PART NAME | MODEL | QTY | PART NUMBER | DESCRIPTION |
|------|------------------------------|----------------------------|-----|----------------------|--|
| 85 | Spring-plunger | ARS100 ARS101 ARS102 | 2 | 2858-W-101 | 1.75" free length, 0.38" minimum inner diameter. |
| | | ARS400 ARS402 ARS403 | 1 | | |
| 86 | Plunger | ARS100 ARS101 ARS102 | 2 | 1846-V-126 | Plunger is cylindrical in shape, 0.75" diameter 1.84" in length. |
| | | ARS400 ARS402 ARS403 | 1 | | |
| 87 | Tube assembly | ARS100 ARS101 ARS102 | 2 | A-3196-Z-1066 | 14.75" long, 0.63"-18 UNF connector 1898-G-241 both ends, 0.38" I.D., 0.75" O.D. |
| | | ARS400 ARS402 ARS403 | 1 | | |
| 88 | Clamp | ARS100 ARS101 ARS102 | 2 | 2257-D-1096 | 1.75" overall length and 0.88" wide, there is a 0.63" opening for a tube to pass through, and a 0.47" diameter hole for attaching the clip to the case. |
| | | ARS400 ARS402 ARS403 | 1 | | |
| 89 | Washer-pump body attaching | ARS100 ARS101 ARS102 | 8 | 1229-E-1669 | 0.62" O.D., 0.34" I.D., 0.06" thick. |
| | | ARS400 ARS402 ARS403 | 4 | | |
| 90 | Capscrew-pump body attaching | ARS100 ARS101 ARS102 | 8 | S-256P-2 | Hex head capscrew, 0.31"-18 thread, 0.75" long measured from under the head to the end, grade 8. Phosphate coated. |
| | | ARS400 ARS402 ARS403 | 4 | | |
| 91 | Fitting-hydraulic | ARS100 ARS101 ARS102 | 2 | A-2206-D-56 | Fitting and screen assembly (2297-S-3841), 0.75"-14 N.P.T. male thread on one end, 0.25"-18 N.P.T. other end, and measures 1.12" across flats (hex head), 0.75" I.D., 0.81" O.D. |
| | | ARS400 ARS402 ARS403 | 1 | | |

NUMERICAL PARTS LISTING

| PART NUMBER | PAGE | PART NUMBER | PAGE |
|----------------|-----------------|----------------|--------------|
| 5-X-1137 | 4, 5, 15 | 3226-N-1262 | 14 |
| 5-X-1138 | 4, 5, 16 | 3226-Q-1265 | 14 |
| 26-X-1008 | 5, 14 | A-3237-A-1041 | 15 |
| A-1199-C-1043 | 9 | 3260-B-1458 | 10, 18 |
| A-1205-B-1198 | 5, 17 | 3260-D-1460 | 10, 18 |
| A-1205-U-1529 | 4, 10, 17 | 3260-B-1510 | 18 |
| A-1205-A-2107 | 4, 10, 18 | 3260-D-1512 | 10, 18 |
| A-1205-B-2108 | 5, 18 | 3266-Y-1247 | 11 |
| 1227-K-1051 | 11, 18 | 3266-R-1266 | 17 |
| 1228-K-37 | 19 | 3266-V-1270 | 12 |
| 1228-P-250 | 5, 17 | 3290-Y-1065 | 6 |
| 1228-Z-1222 | 4, 5, 13 | 3296-K-1155 | 14 |
| 1228-N-1262 | 4, 17 | 3297-J-1180 | 6 |
| 1229-T-1450 | 11, 18 | 3297-K-1181 | 6 |
| 1229-E-1513 | 4, 5, 8, 10, 17 | A-3297-L-1182 | 13 |
| 1229-K-1597 | 5, 15, 16 | 3297-P-1186 | 6 |
| 1229-E-1669 | 5, 12, 20 | A-3297-P-1186 | 6 |
| 1244-S-2047 | 4, 8 | 3297-Q-1187 | 6 |
| 1846-V-126 | 20 | A-3297-D-1278 | 13 |
| 1846-Z-312 | 4, 9 | 3297-P-1368 | 6 |
| 1850-T-150 | 9 | A-3303-Q-1005 | 12 |
| 1854-C-315 | 4, 17 | 3892-X-5250 | 6 |
| 1854-R-330 | 5, 17 | 3892-Y-5251 | 6 |
| 1898-S-201 | 9 | 832 | 4, 6, 7, 8 |
| 1898-E-239 | 19 | 835 | 4, 7, 8 |
| 1898-H-242 | 12, 19 | 65225 | 4, 7, 8 |
| A-1898-U-645 | 12 | 65500 | 4, 6, 7, 8 |
| 2205-C-1043 | 14 | KIT T-2120-1 | 3, 4 |
| 2205-E-1045 | 16 | KIT T-2120-2 | 3, 4 |
| A-2206-D-56 | 12, 20 | KIT T-2120-3 | 3, 4 |
| 2206-J-62 | 9 | KIT T-2120-4 | 3, 4 |
| 2206-W-1037 | 12 | KIT T-2120-5 | 3, 5 |
| 2207-W-1011 | 12 | KIT T-2120-6 | 3, 5 |
| 2230-K-1155 | 15 | NL-27-1 | 4, 8 |
| 2257-D-1096 | 20 | P-24 | 19 |
| 2258-K-1233 | 16 | P-26 | 9 |
| A-2296-B-1042 | 19 | P-28 | 9 |
| A-2296-T-1086 | 12 | P-42 | 9 |
| 2297-X-6420 | 13 | P-212 | 9 |
| 2297-A-6423 | 12 | S-256P-2 | 5, 20 |
| 2803-Z-2704 | 4, 10 | S-268-2 | 5, 15, 16 |
| 2803-A-2705 | 4, 10 | S-2528-1 | 12 |
| 2803-B-2706 | 4, 10 | S-2710-2 | 4, 5, 10, 17 |
| 2847-Q-303 | 19 | S-2718-2 | 4, 8 |
| 2858-W-101 | 20 | | |
| 2858-X-102 | 19 | | |
| 3107-J-1102 | 13 | | |
| A-3196-Z-1066 | 20 | | |
| A-3196-B-1068 | 12 | | |
| A-3226-Y-1247 | 10 | | |
| 3226-E-1253 | 14 | | |

ARVINMERITOR AFTERMARKET PARTS WARRANTY

We warrant all new parts for one year from date of shipment to the buyer against defective material or workmanship (but not against damage caused by accident, abuse or improper installation, maintenance or repair) when such parts are used on vehicles the specifications of which have been approved by our Engineering Department.

As the exclusive remedy under this warranty, we will, at our option, repair or replace such parts free of charge, or take back the nonconforming parts and refund the monies paid by buyer for such parts, if found on examination by us to be nonconforming and if any necessary return charges are prepaid.

If it is necessary to return any parts under this warranty, buyer agrees not to make any deduction on account thereof from remittances on current accounts while claims are in the process of disposition. Any expense incurred without our consent for repairs or replacement will not be allowed.

THIS WARRANTY IS EXPRESSLY IN LIEU OF ALL OTHER WARRANTIES OR CONDITIONS, EXPRESS, IMPLIED OR STATUTORY, INCLUDING ANY IMPLIED WARRANTY OF MERCHANTABILITY OR FITNESS FOR PARTICULAR PURPOSE. IN NO EVENT SHALL SELLER BE LIABLE FOR INCIDENTAL OR CONSEQUENTIAL DAMAGES OF ANY NATURE.

Only genuine ArvinMeritor replacement parts are covered by this aftermarket parts warranty.

Information contained in this publication was in effect at the time the publication was approved for printing and is subject to change without notice or liability. ArvinMeritor reserves the right to revise the information presented or discontinue the production of parts at any time.

ArvinMeritor™

Commercial Vehicle Aftermarket

Meritor Heavy Vehicle Systems, LLC

7975 Dixie Highway
Florence, KY 41042 USA
888-725-9355
www.arvinmeritor.com

© Copyright 2002
ArvinMeritor, Inc

Printed in U.S.A.

Revised 11/2002
PB-9522