

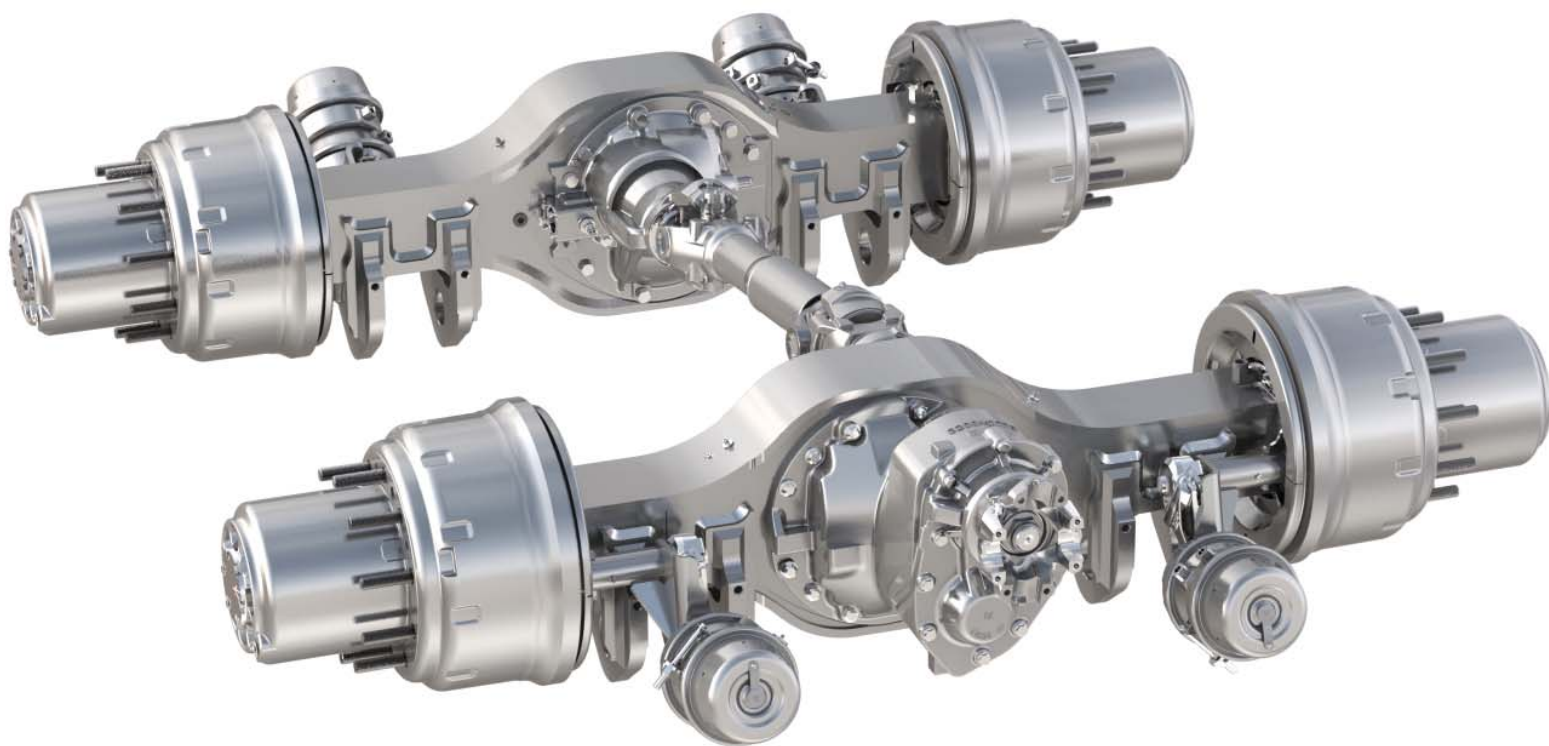
MERITOR P600 PLANETARY HUB REDUCTION TANDEM

MODH2P019WD1008-914 FWD

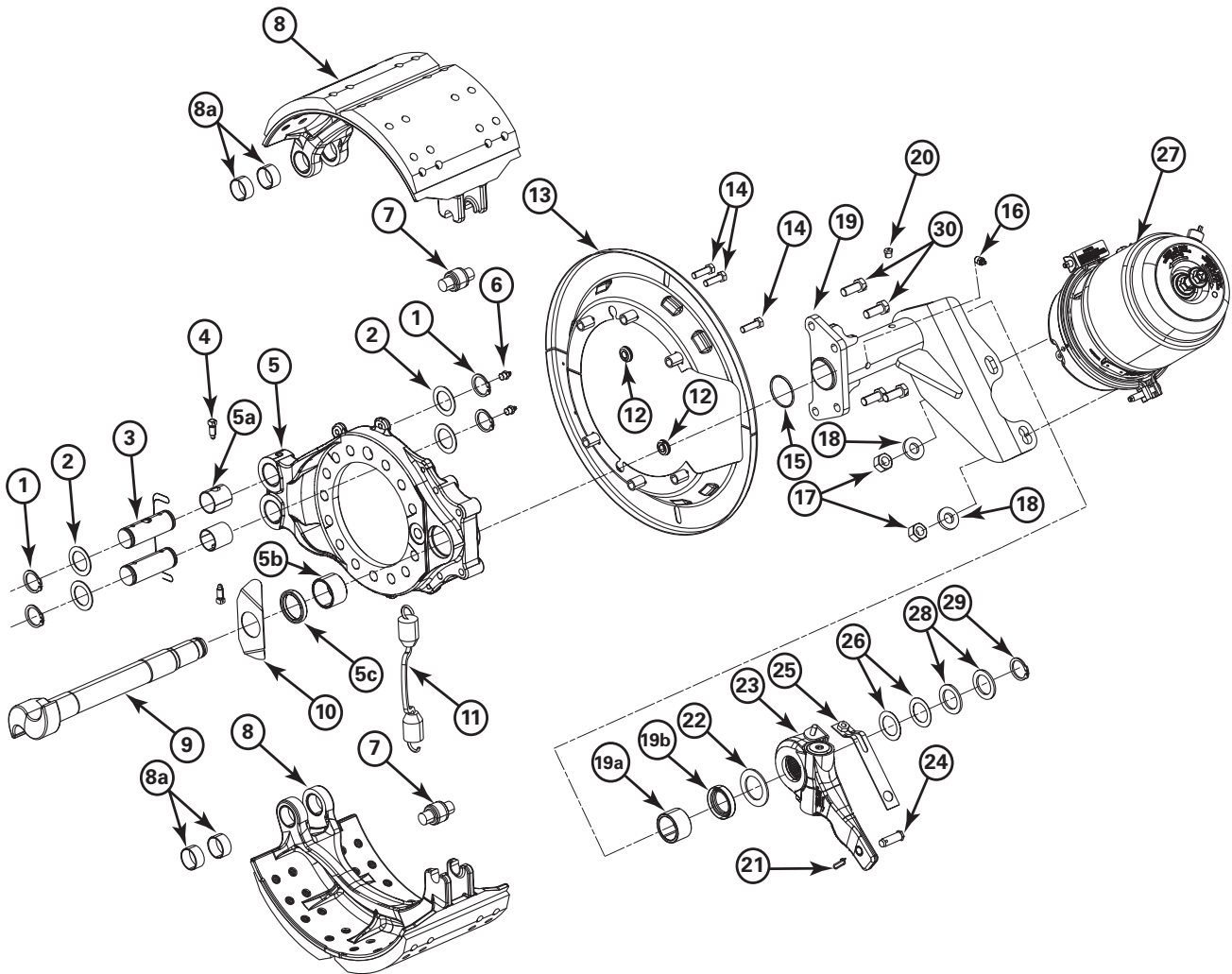
MORH2P019WD1008-914 REAR



MERITOR



BRAKE ASSEMBLY



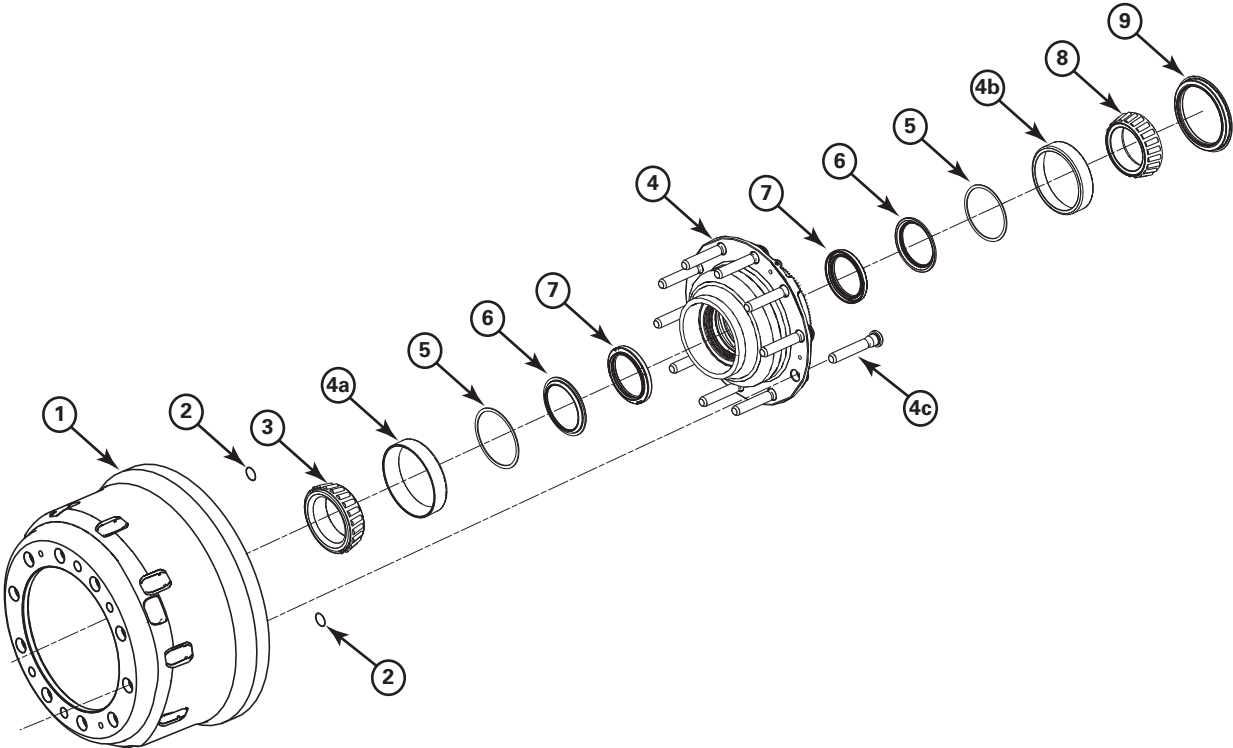
4014014a

ITEM	PART NUMBER	DESCRIPTION	QUANTITY PER WHEEL END	REMARKS
0	CPX-1658-509	Brake Assembly	1	Forward LH
0	CPX-1658-510	Brake Assembly	1	Forward RH
0	CPX-1658-511	Brake Assembly	1	Rear LH
0	CPX-1658-512	Brake Assembly	1	Rear RH
1	1229D2942	Snap Ring Retainer	4	
2	1229B1848	Anchor Pin Flat Washer	4	
3	1259K1181	Brake Shoe Anchor Pin	2	
4	26X1030	Set Screw	2	
5	A5-3211L7760	Brake Spider Assembly	1	Forward LH/Rear RH
5	A5-3211M7761	Brake Spider Assembly	1	Forward RH/Rear LH



ITEM	PART NUMBER	DESCRIPTION	QUANTITY PER WHEEL END	REMARKS
5a	1225U827	Anchor Pin Bushing	2	
5b	1225J1362	S-Cam Bushing	1	
5c	A-1205X2650	S-Cam Oil Seal	1	
6	1199N1860	Grease Fitting	2	
7	2297Q8233	Roller	2	
8	A12-3222F2294	Brake Shoe and Lining Assembly	2	
8a	1225U1581	Bushing	4	Included with Shoe
9	2210Q9117	Camshaft	1	Forward LH/Rear RH
9	2210P9116	Camshaft	1	Forward RH/Rear LH
10	1229F4686	Special Washer	1	
11	2258Y1273	Return Spring	1	
12	2297S9249	ABS Sensor Grommet	2	
13	A1-3236L2768	Dust Shield	1	
14	S-2610-B	Capscrew	6	Kit contains 3/8-16 x 1.25"
15	1205G761	O-Ring	1	
16	1199N1860	Grease Fitting	1	
17	N-310-1	Nut	2	5/8-11 UNC
18	1229N1626	Flat Washer	2	
19	Q88-3299T1554	Brake Chamber Bracket Assembly	1	Forward LH
19	Q88-3299U1555	Brake Chamber Bracket Assembly	1	Forward RH
19	Q87-3299T1554	Brake Chamber Bracket Assembly	1	Rear RH
19	Q87-3299U1555	Brake Chamber Bracket Assembly	1	Rear LH
19a	1225H1568	Cam Bushing	1	
19b	A-1205W2649	Grease Seal	1	
20	1199U3947	Grease Fitting	1	
21	2257D1174	Clevis Pin Clip	1	
22	1229H4090	Slack Inner Flat Washer	1	0.104" thick
23	A75-3275S1059	Automatic Slack Adjuster-Haldex	1	
24	19X1116	Clevis Pin	1	
25	A-2255C1329	Strap Assembly	1	
26	1229J3130	Outer Washer Spacer (use as required)	2	0.030" thick
27	E68-3276D30	Spring Brake Chamber Assembly	1	Forward LH/Rear RH
27	E69-3276D30	Spring Brake Chamber Assembly	1	Forward RH/Rear LH
28	1229W3117	Washer Spacer (use as required)	2	0.120" thick
29	1229D2942	Snap Ring Retainer	1	
30	A-2297U9251	Bracket-to-Spider Bolt Assembly	4	1/2-13 x 1.35 mm

HUB AND DRUM ASSEMBLY

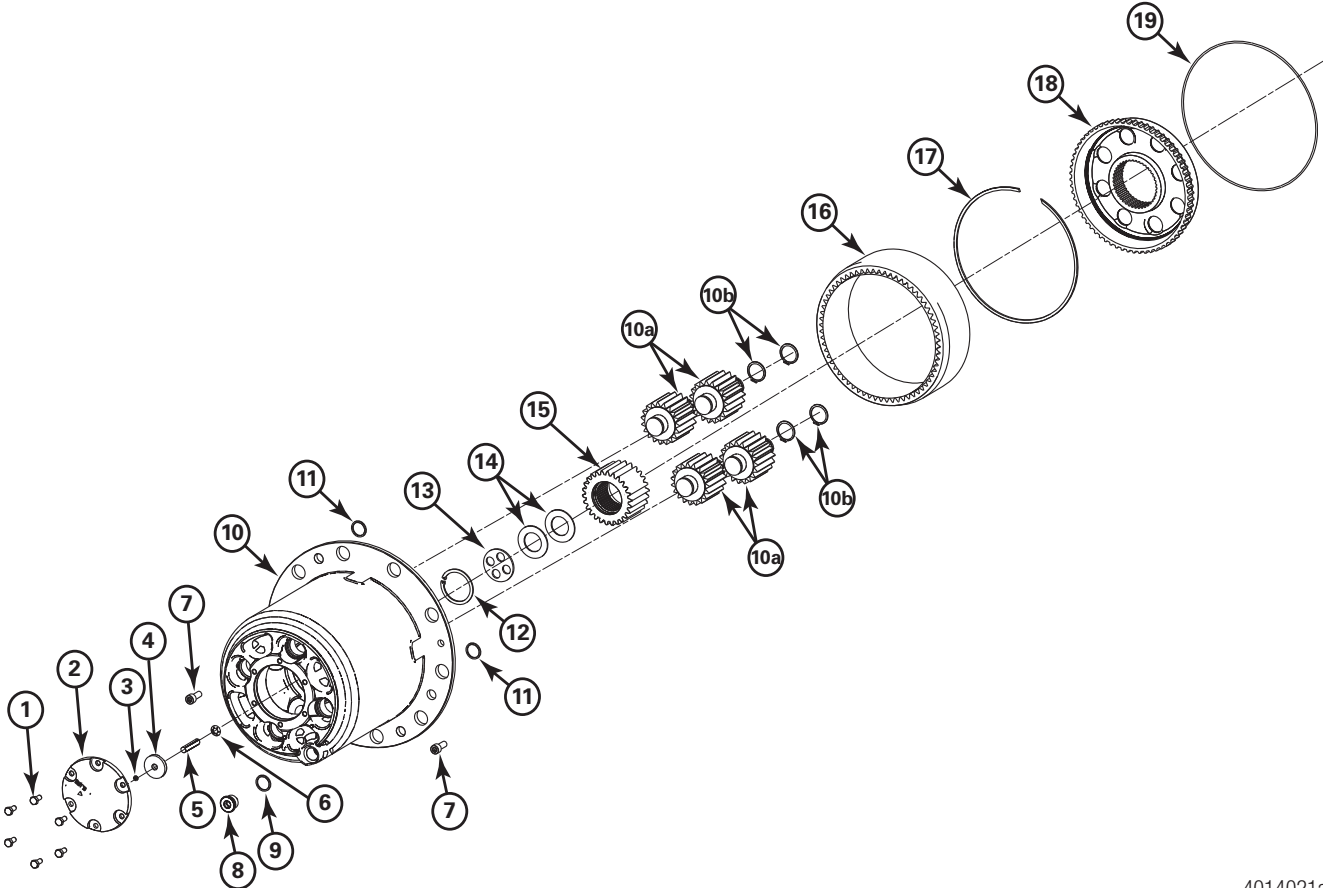


4014016a



ITEM	PART NUMBER	DESCRIPTION	QUANTITY PER WHEEL END	REMARKS
1	85123839002	Brake Drum, Fin.	1	
2	5X1290	CTIS O-Ring	2	
3	6580	Bearing Cone	1	
4	B2333F4842	Hub Assembly, Fin.	1	
4a	6535	Bearing Cup	1	
4b	HM220110	Bearing Cup	1	
4c	20X2606	Wheel Stud	10	
5	1229K4691	CTIS Snap Ring	2	
6	2297T8886	CTIS Guide	2	
7	A1205V2830	CTIS Seal	2	
8	HM220149	Bearing Cone	1	
9	A1205T2490	Oil Seal Assembly	1	

PLANETARY CASE ASSEMBLY

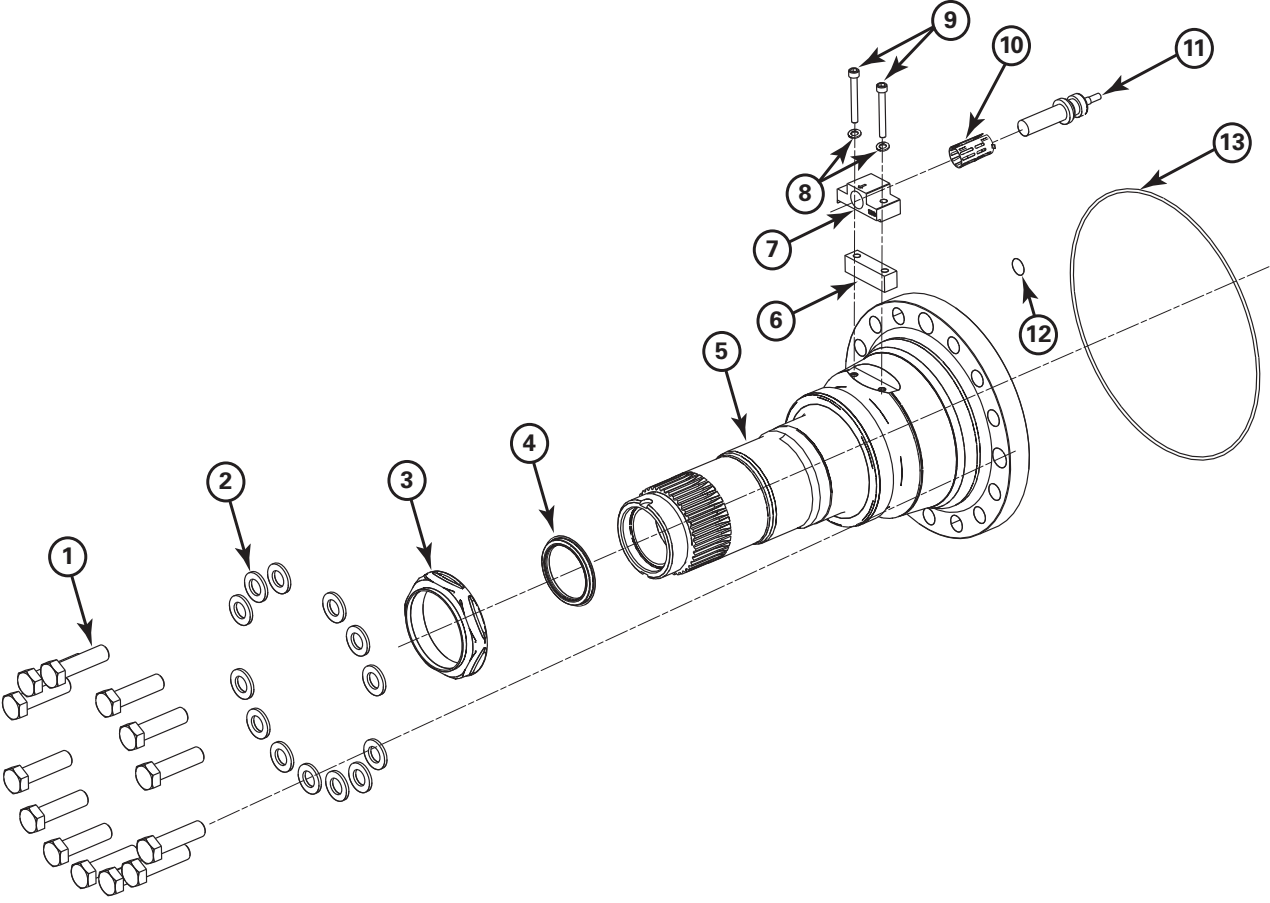


4014021a



ITEM	PART NUMBER	DESCRIPTION	QUANTITY PER WHEEL END	REMARKS
1	10X1783	Hub Cover Screw	6	M8 x 1.25-16 mm
2	3266U1685	Cover, Fin.	1	
3	955891	Shim	AS REQ	0.8 mm
4	2297W8733	Magnet	1	
5	1523115	Pin	1	Use 1523115 or 1523116 based on end play, 52 mm
5	1523116	Pin	1	Use 1523115 or 1523116 based on end play, 56 mm
6	967581	Clip	1	10 mm ID
7	41X1668	Hex Socket Capscrew	2	M10 x 1.5 x 25 mm
8	981281	Magnetic Oil Filler Plug	1	
9	949329	Gasket	1	
10	A3298C1355	Planetary Case Assembly	1	
10a	KITE816	Planetary Pinion Assembly	4	
10b	914463	Snap Ring	4	
11	5X1290	CTIS O-Ring	2	
12	914532	Snap Ring	1	
13	1522393	Thrust Washer	1	
14	1673500	Spring Washer	2	
15	3892A5981	Planetary Sun Gear	1	
16	1522380	Planetary Ring Gear	1	
17	3191997	Snap Ring	1	
18	1522392	Ring Gear	1	
19	982108	Hub O-Ring	1	

SPINDLE ASSEMBLY

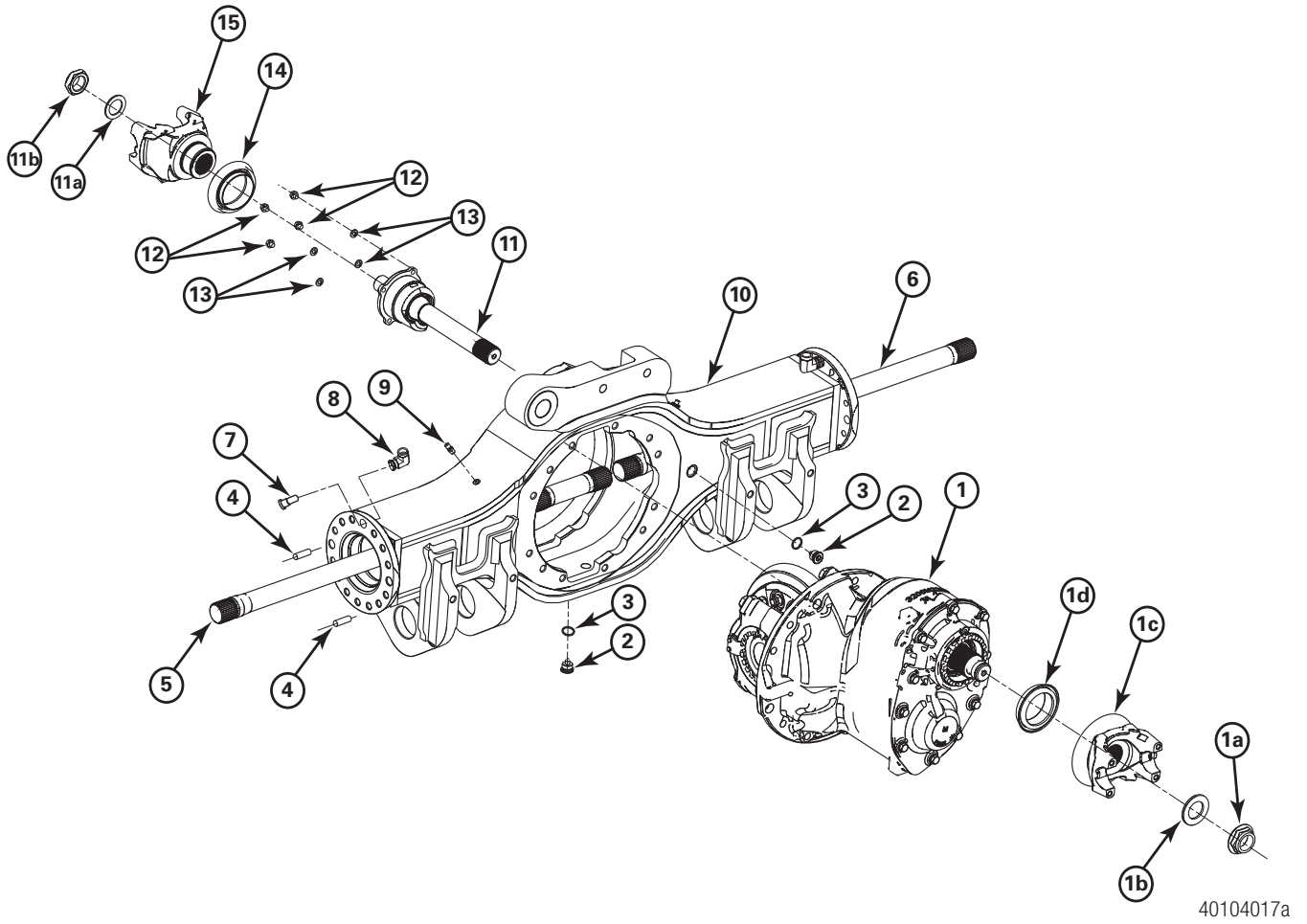


4014015a



ITEM	PART NUMBER	DESCRIPTION	QUANTITY PER WHEEL END	REMARKS
1	MS216060A2	Bolt/Capscrew	13	M16-2.0 x 60 mm
2	1229W1557	Hardened Flat Washer	1	
3	1227S1735	Wheel Nut	1	
4	A1205J2844	Axle Shaft Seal	1	
5	A3213B2368	Spindle Assembly	1	
6	2297M8931	ABS Sensor Spacer Block	1	
7	3380E1955	ABS Mount Block	1	
8	MWA506	Flat Washer	2	
9	SP2053	Capscrew	2	M6 x 1.0 mm x 45 mm
10	2237H1360	Sensor Retainer Bushing	1	
11	A2237V1504	Sensor Assembly	1	
12	5X1090	CTIS O-Ring	1	
13	5X1371	Spindle O-Ring	1	

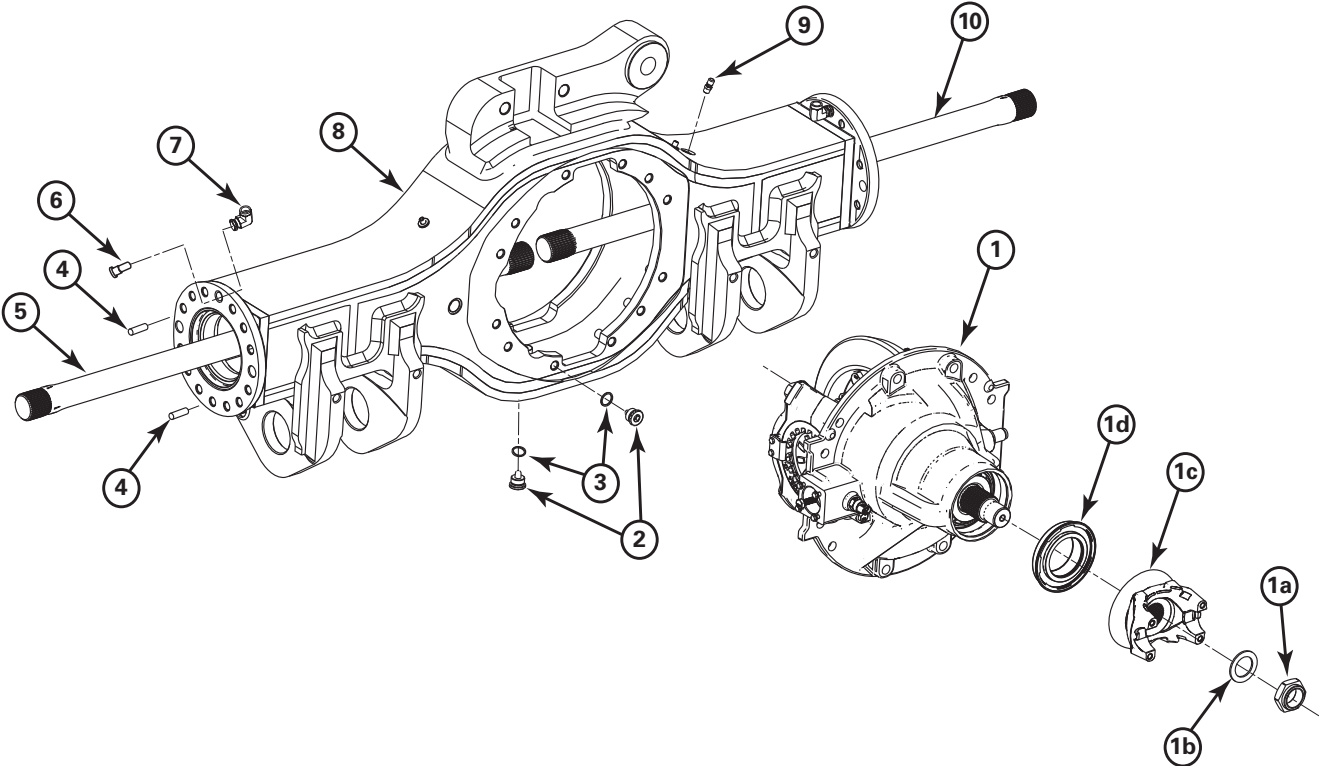
FORWARD HOUSING AND CARRIER





ITEM	PART NUMBER	DESCRIPTION	QUANTITY	REMARKS
1	A133200P2434264	Diff, Lockout Carrier Assembly	1	
1a	40X1233	Yoke Lock Nut	1	In KIT 2826
1b	1229N1730	Yoke Flat Washer	1	In KIT 2826
1c	A23260F1826	Yoke and Deflector Assembly	1	
1d	A11205X2728	Input Seal Assembly	1	
2	981281	Magnetic Oil Filler Plug	2	
3	949329	Gasket	2	
4	1246T1268	Dowel	4	
5	3802C2161	Axle Shaft, Fin.	1	RH
6	3802D2162	Axle Shaft, Fin.	1	LH
7	1225Z1664	CTIS Bushing	2	
8	2206E1695	CTIS Connector Fitting	2	
9	A1199W4053	Breather Assembly	1	
10	B33801Q1811	Housing Assembly with Brackets	1	
11	A273226T1112	Thru Shaft Assembly	1	
11a	1229T1736	Yoke Flat Washer	1	In KIT 2637
11b	40X1237	Yoke Lock Nut	1	In KIT 2637
12	41X1789	Capscrew	4	M10 x 1.5 x 30 mm
13	MWA510Z	Flat Washer	4	M10
14	A1205C2707	Output Oil Seal Assembly	1	
15	170TYS32-1	Drive Yoke	1	

REAR HOUSING AND CARRIER

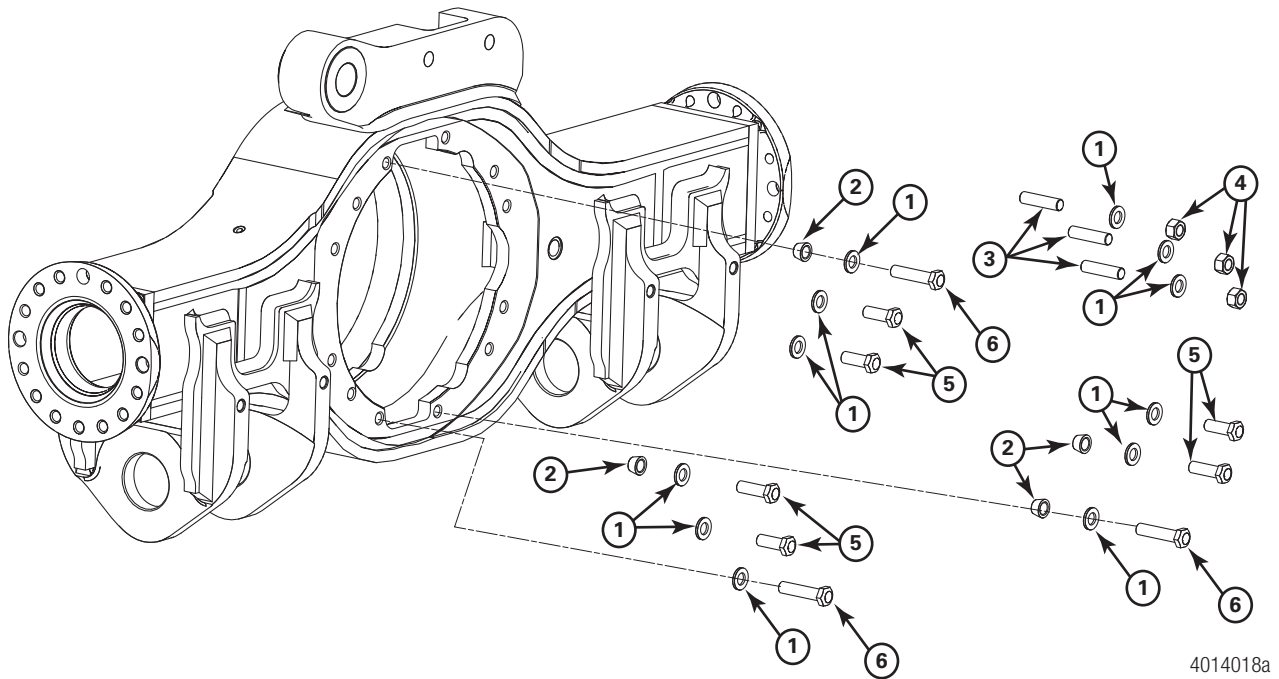


4014019a



ITEM	PART NUMBER	DESCRIPTION	QUANTITY	REMARKS
1	A5-3200H2270-264	Diff, Lockout Carrier Assembly	1	
1a	40X1237	Yoke Lock Nut	1	In KIT 2637
1b	1229T1736	Yoke Flat Washer	1	In KIT 2637
1c	170TYS32-1A	Yoke and Deflector Assembly	1	
1d	A-1205R2800	Pinion Oil Seal Assembly	1	
2	981281	Magnetic Oil Filler Plug	2	
3	949329	Gasket	2	
4	1246T1268	Dowel	4	
5	3802D2162	Axle Shaft	1	RH
6	1225Z1664	CTIS Bushing	2	
7	2206E1695	CTIS Connector Fitting	2	
8	B3-3801R1812	Housing Assembly with Brackets	1	
9	A 1199W4053	Breather Assembly	1	
10	3802C2161	Axle Shaft, Fin.	1	LH

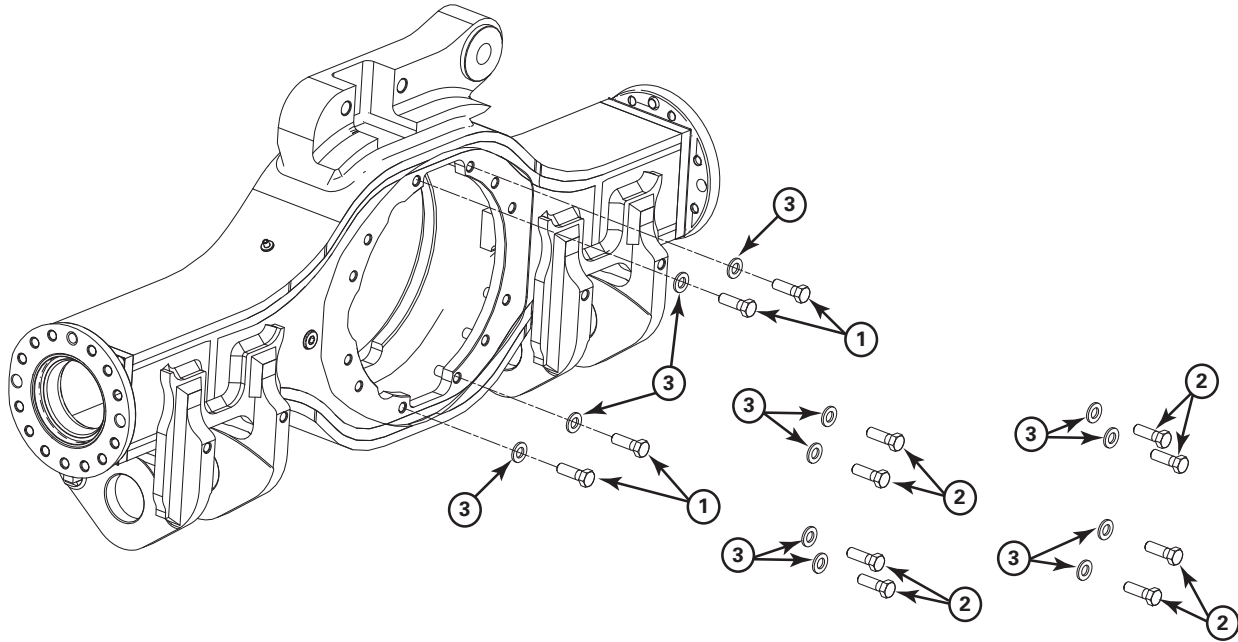
FORWARD CARRIER TO HOUSING FASTENERS



ITEM	PART NUMBER	DESCRIPTION	QUANTITY	REMARKS
1	MWA 516	Hardened Flat Washer	12	
2	1246V1166	Dowel	4	
3	4X1929	Stud	3	5/8-18 x 2.75"
4	N 110 1	Nut	3	5/8-18
5	MS216050N 2	Bolt/Capscrew	6	M16 x 2.0 x 50 mm
6	MS216070N 2	Bolt/Capscrew	3	M16 x 2.0 x 70 mm



REAR CARRIER TO HOUSING FASTENERS

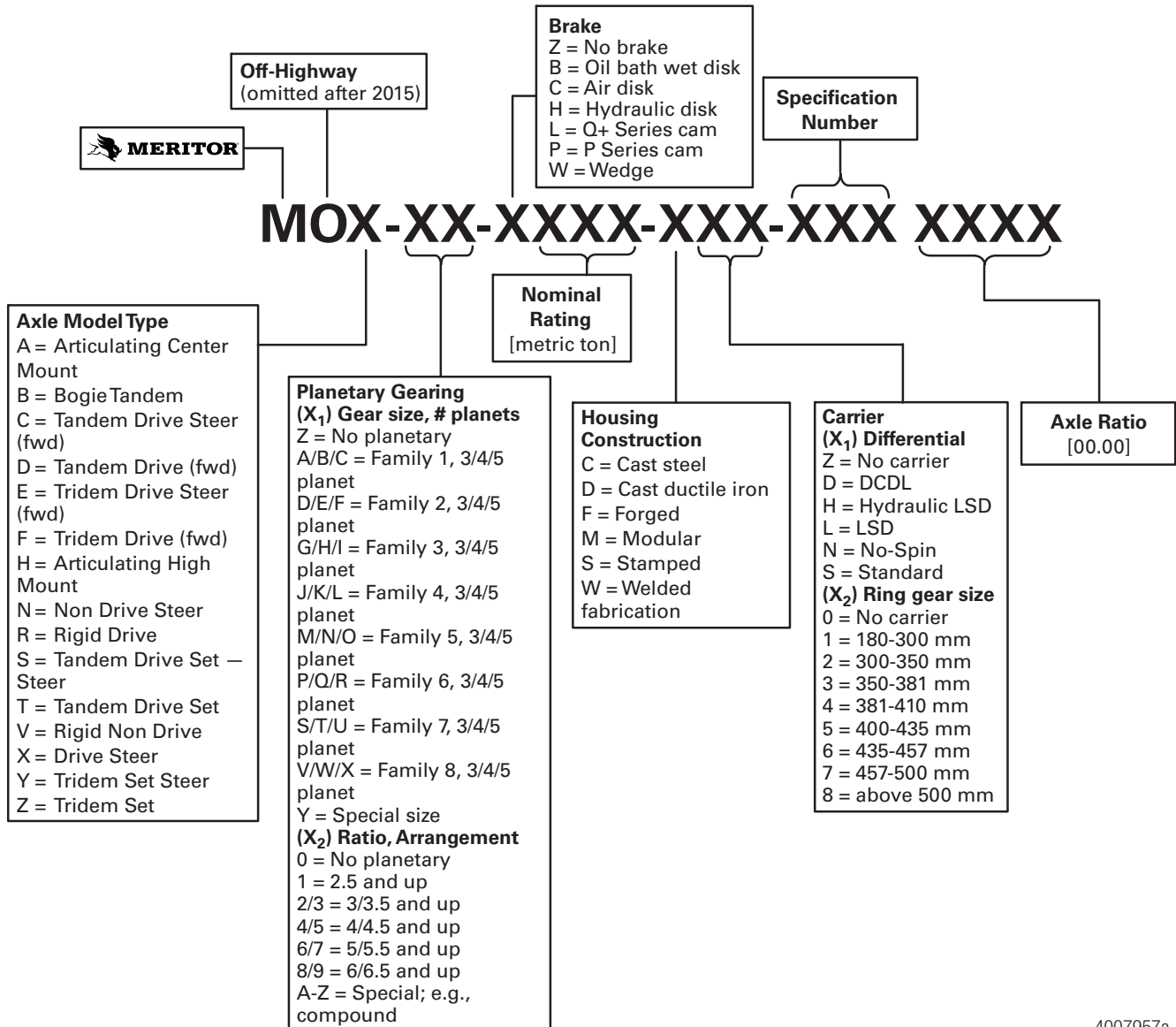


4014020a

ITEM	PART NUMBER	DESCRIPTION	QUANTITY	REMARKS
1	MS216070N 2	Bolt/Capscrew	4	M16 x 2.0 x 70 mm
2	MS216050N 2	Bolt/Capscrew	8	M16 x 2.0 x 50 mm
3	MWA 516	Flat Washer	12	

NOMENCLATURE

OFF-HIGHWAY AXLE IDENTIFICATION







4007957a



Shop MeritorPartsXpress.com for Off-Highway Parts



-  Place your order
-  Check Price and Availability
-  Retrieve Invoices
-  and more!

MERITOR AFTERMARKET PARTS WARRANTY

We warrant all new parts for one year from date of shipment to the buyer against defective material or workmanship (but not against damage caused by accident, abuse or improper installation, maintenance or repair) when such parts are used on vehicles the specifications of which have been approved by our Engineering Department.

As the exclusive remedy under this warranty, we will, at our option, repair or replace such parts free of charge, or take back the nonconforming parts and refund the monies paid by buyer for such parts, if found on examination by us to be nonconforming and if any necessary return charges are prepaid.

If it is necessary to return any parts under this warranty, buyer agrees not to make any deduction on account thereof from remittances on current accounts while claims are in the process of disposition. Any expense incurred without our consent for repairs or replacement will not be allowed.

THIS WARRANTY IS EXPRESSLY IN LIEU OF ALL OTHER WARRANTIES OR CONDITIONS, EXPRESS, IMPLIED OR STATUTORY, INCLUDING ANY IMPLIED WARRANTY OF MERCHANTABILITY OR FITNESS FOR PARTICULAR PURPOSE. IN NO EVENT SHALL SELLER BE LIABLE FOR INCIDENTAL OR CONSEQUENTIAL DAMAGES OF ANY NATURE.

Only genuine Meritor replacement parts are covered by this aftermarket parts warranty.



Meritor Heavy Vehicle Systems, LLC
7975 Dixie Highway
Florence, Kentucky 41042 USA

Call 1-888-725-9355
or visit meritor.com

©2018 Meritor, Inc.
Litho in USA, PB-1827
Issued 04-18 (16579)