

**MERITOR® OFF-HIGHWAY**



# Heavy-Duty Planetary Drive Steer Axles

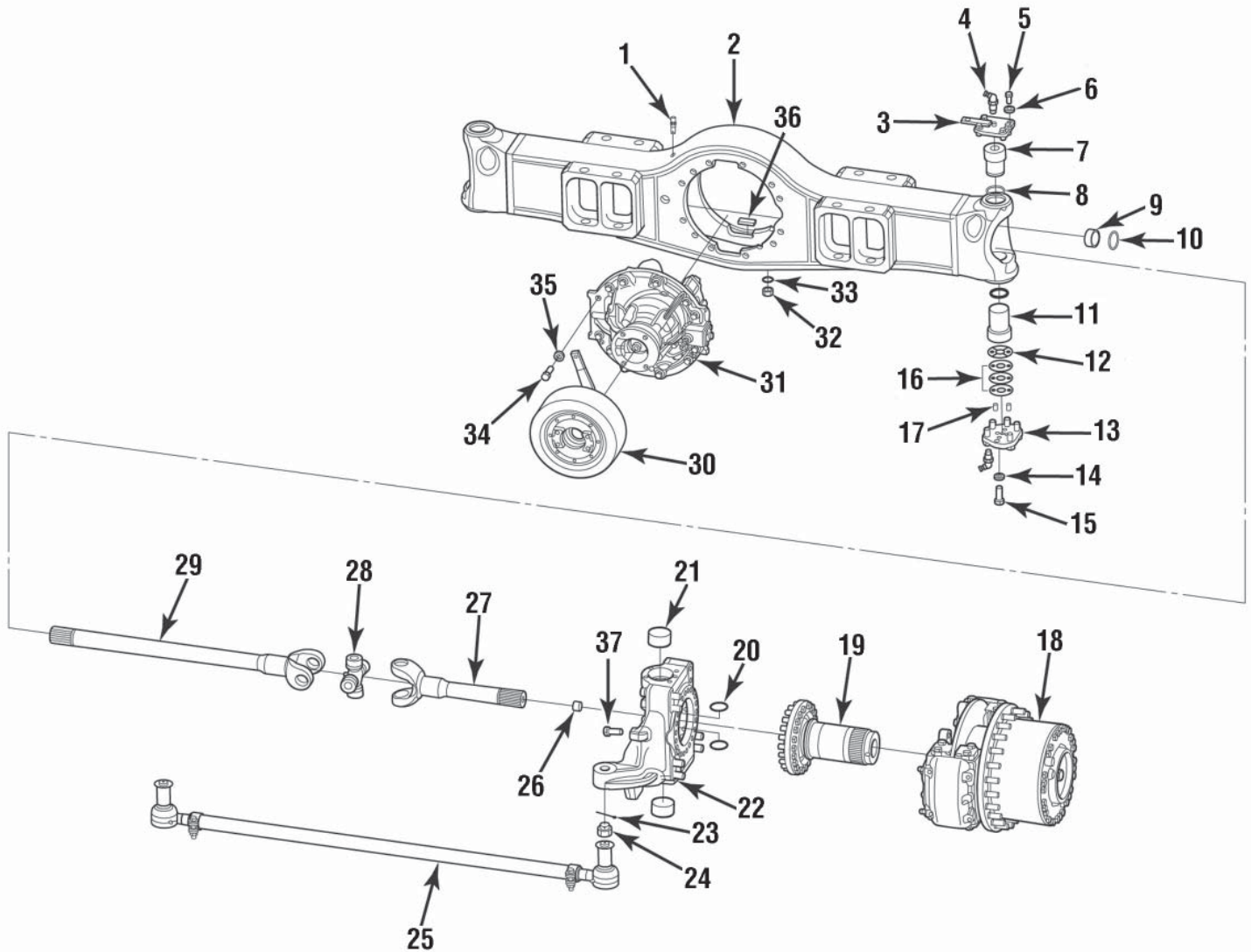


**MERITOR®**

PB-1106



# AXLE EXPLODED VIEW

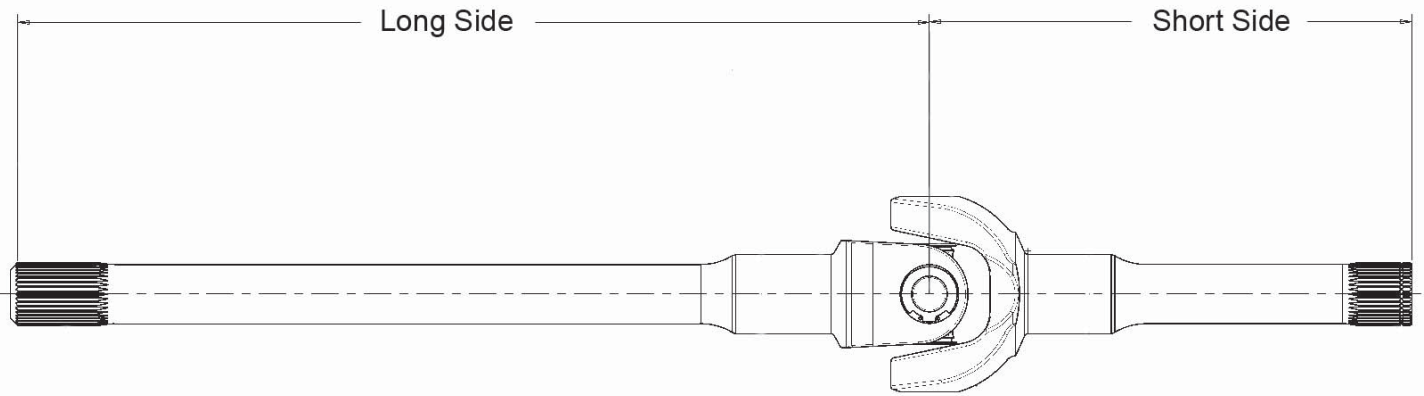


ITEM	PART NUMBER	QTY (PER AXLE)	DESCRIPTION	REMARKS
1	A-1199-W-4053	1	Breather	
2	Axle Housing	See note on nomenclature, page 6.		
	A2-3801-M-1703	1	N5	Finished
	A2-3801-P-1706	1	H2	Finished
3	Cap			
	2297-Y-8787		Cap (Top King Pin)	
	A-2297-Y-8787	As Needed	Cap, Assy w/ Steering Sensor Bracket	H2/N5 Wheel End
	A1-2297-Y-8787		Cap, Assy w/ Steering Sensor Bracket	P8 Wheel End
4	1199-B-3226	4	Fitting - Grease	Angled
	1199-N-1860	2	Fitting - Grease	Angled

# AXLE COMPONENTS

ITEM	PART NUMBER	QTY (PER AXLE)	DESCRIPTION	REMARKS
5	MS-212035-A2	10	Bolt (King Pin Cap / Top)	M12x1.75 x 35, Hex
6	1229-D-4632	10	Washer (King Pin Cap / Top)	M12
7	See Table	2	King Pin (Top)	
8	See Table	4	O-Ring (King Pin)	
9	See Table	4	Bushing (Axle Shaft)	
10	A-1205-U-2647	2	Seal - Radial (Axle Shaft / Housing)	
11	See Table	2	King Pin (Bottom)	
12	See Table	2	Thrust Washer (King Pin)	
13	2297-X-8786	2	Cap (Bottom King Pin)	
14	1229-W-1557	12	Washer (King Pin Cap / Bottom)	M16
15	MS-216045-A2	12	Bolt (King Pin Cap / Bottom)	M16x2 x 45, Hex
16	See Table	As Needed	Shim (King Pin thrust washer)	
17	See Table	4	Pin - Spirol	
18	See PB-1267	2	Wheel End Assembly	
19	Spindle			
	3213-J-2246	2	Spindle - H2 Wheel End	
	3213-G-2243	2	Spindle - N5 Wheel End	
	3213-X-2208	2	Spindle - P8 Wheel End	
20	See Table	4	Seal (King Pin)	
21	See Table	4	Bushing - King Pin	
22	See PB-1267	2	Knuckle	
23	See Table	2	Pin - Cotter (Tie Rod Nut)	Ø0.25 x 2.5"
24	See Table	2	Nut - Castle (Tie Rod End)	
25	See Table	1	Tie Rod, Assy	With Nut
26	2297-Q-8779	2	Thrust Button	
Not Shown	See Table	2	Tie Rod End	
27-29	See Table	2	Axle Shaft - Assy	
28	CP850N-4	2	U-Joint Replacement Kit	
30	DCM-1203-29	1	Parking Brake Assembly	If Equipped
31	See Bill Of Materials	1	Carrier	
32	981281	2	Plug - Magnetic, Oil	
33	949329	2	Ring - Seal (Oil Fill & Drain Plug)	
34	MS-216050-N2	8	Bolt (Carrier / Axle Hsg)	M16x2 x 50, hex
	MS-216070-N2	4		M16x2 x 70, hex
35	1229-W-1557	12	Washer (Carrier / Axle Hsg)	M16
36	2297-K-6771	6	Magnet - Housing	
37	26-X-117	2	Bolt - Sheer Stop	If Equipped

# AXLE SHAFT



## AXLE SHAFT ASSEMBLIES

PART NUMBER	SHORT ASSEMBLY	LONG ASSEMBLY
A-3302-D-1018	541.5	1030.0
A1-3302-W-1011	405.8	991.3
A1-3302-S-1007	405.8	963.5
A-3302-K-1025X	470.1	945.3
A-3302-H-1022X	470.1	917.5
A-3302-G-1021	470.1	446.6
A-3302-F-1020	470.1	468.44
A-3302-W-1011	470.1	991.38
A-3302-V-1010X	405.9	989.0
A-3302-U-1009X	405.9	788.3
A-3302-S-1007	470.1	963.5
A-3302-R-1006	541.5	1030.0
A-3302-Q-1005	541.5	1002.0

# KING PINS, BUSHINGS AND CAPS

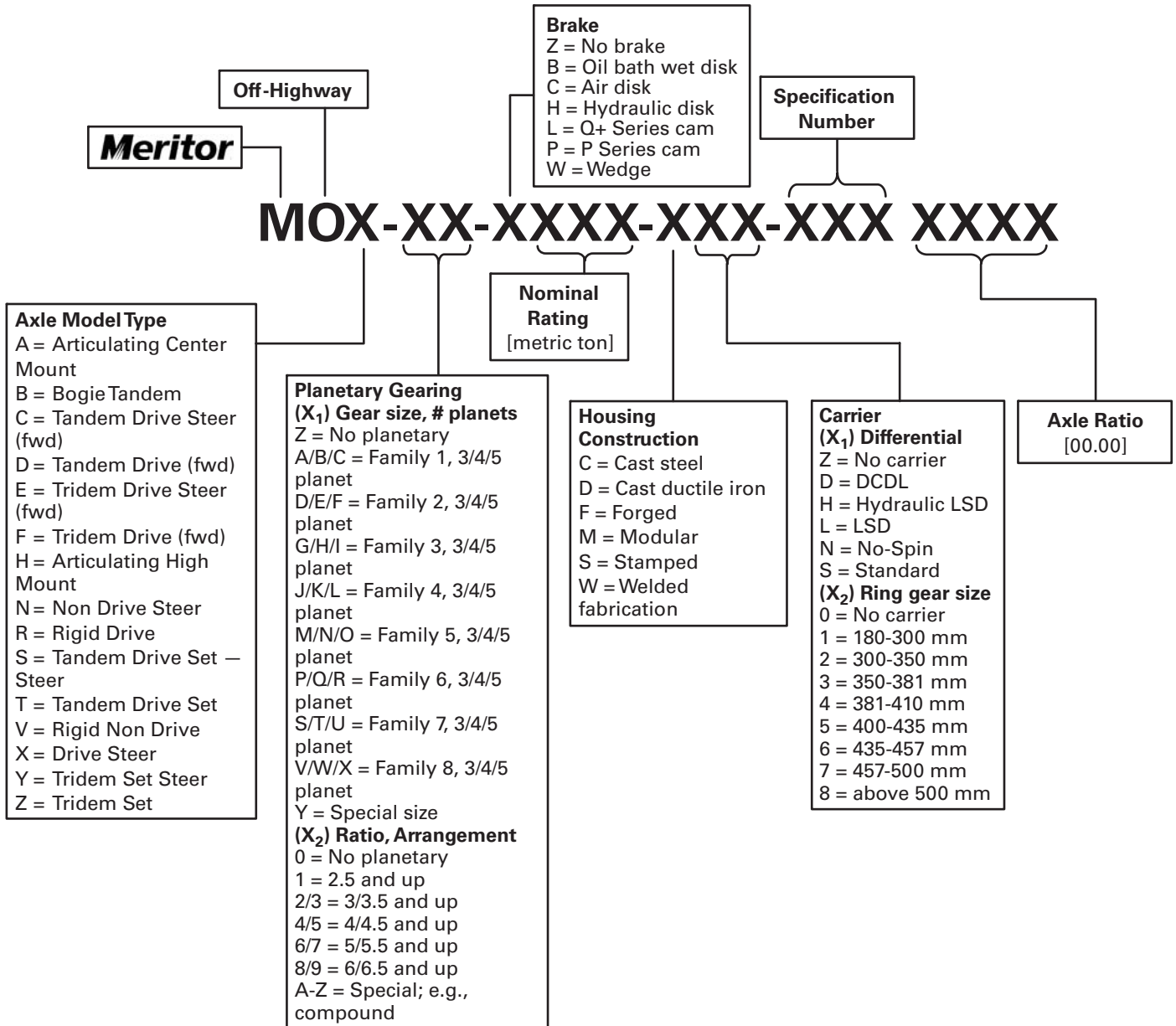
HEAD DIAMETER	PART NUMBER	MATING PART DESC	MATING PART NUMBER
69.8 mm	3101-Y-1091	Bushing	1225-H-1516
		Thrustwasher	1229-X-5146
		Shim - 1.0 mm	2803-B-3850
		Shim - 0.5 mm	2803-C-3851
		Shim - 0.25 mm	2803-D-3852
		O-ring	5-X-1395
		Seal	A-1205-M-2795
75 mm	"3101-B-1094 (97 mm length)  3101-A-1093 (124.7 mm length) "	Bushing	1225-P-1524
		Thrustwasher	42-X-1516
		Shim - 1.0 mm	2803-Y-3847
		Shim - 0.5 mm	2803-A-3849
		Shim - 0.25 mm	2803-L-3860
		O-ring	5-X-1394
		Seal	A-1205-U-2803

# TIE ROD ASSEMBLIES

THREAD SIZE	PART NUMBER	QTY (PER AXLE)	DESCRIPTION
7/8" - 14	A-3102-W-4677	1	Tie Rod Assembly w/Nuts
	3144-H-1178	1	Tie Rod End - Right
	3144G1177	1	Tie Rod End - Left
	3102-J-4690	1	Tube and Clamps Only
	K-2440	2	Cotter Pin
	1-1/4" - 12	A-3102-L-4666	1
1227-M-1001		2	Castle Nut
3144-K-1181		1	Tie Rod End - Right
3144-J-1180		1	Tie Rod End - Left
K-2820		2	Cotter Pin
3102-K-4691		1	Tube and Clamps Only
1-1/2" - 12	A-3102-B-4682	1	Tie Rod Assembly w/Nuts
	3144-M-1183	1	Tie Rod End - Right
	3144-L-1182	1	Tie Rod End - Left
	K-21020	2	Cotter Pin
	3102-L-4692	1	Tube and Clamps Only
1-5/8" - 12	A-3102-M-4693	1	Tie Rod Assembly w/Nuts

# NOMENCLATURE

## OFF-HIGHWAY AXLE IDENTIFICATION

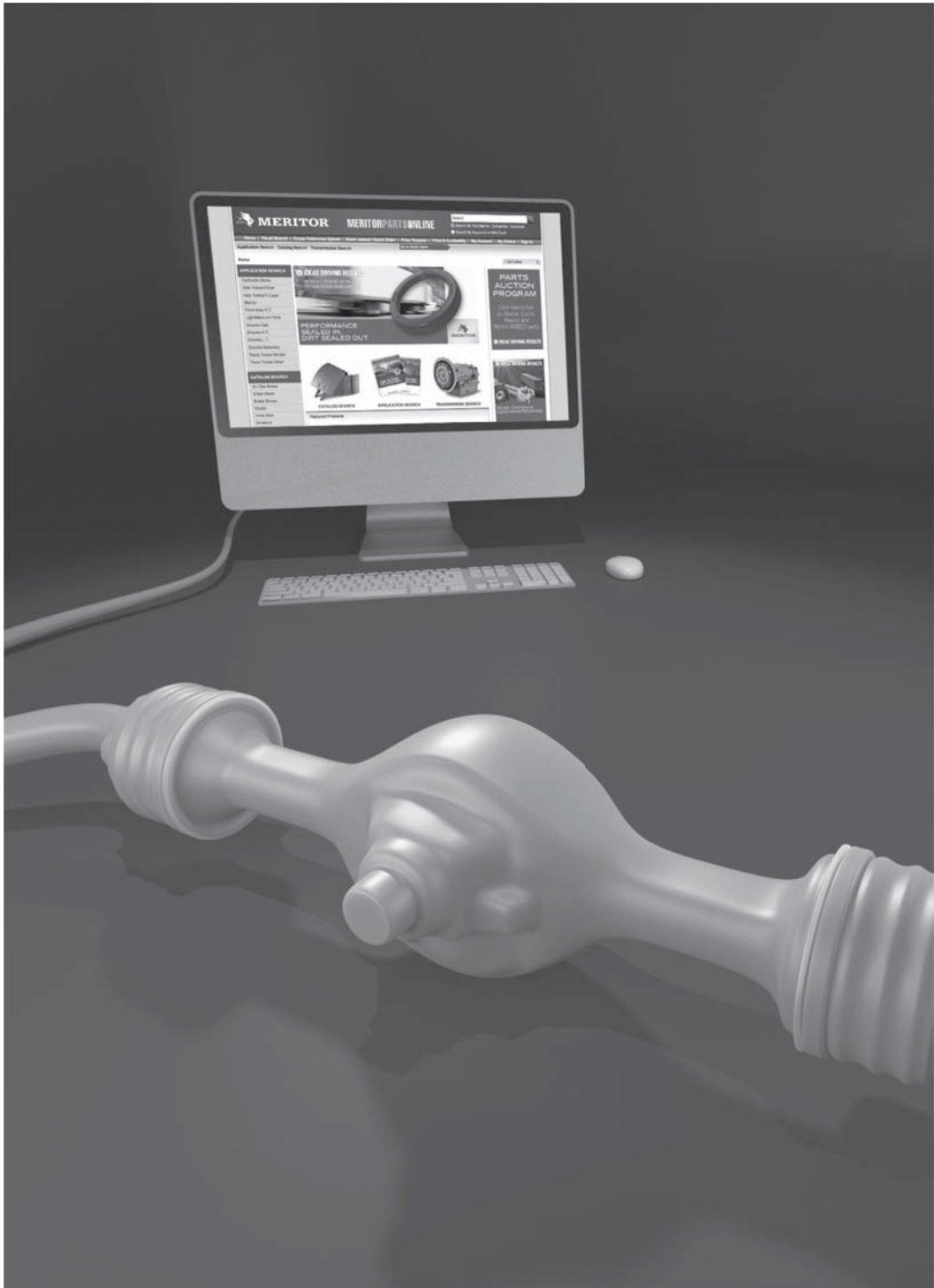


**Please note:**

If the 10th digit (Housing Construction) is a W you will need knuckles and calipers listed as “Current”.

If the 10th digit (Housing Construction) is a D you will need knuckles and calipers listed as “New”.

Refer to PB-1267 Planetary Wheel Ends for specific part numbers.



**MERITOR WABCO**  
Safety Strong. Efficiency Smart.

**Mascot**  
Truck Parts  
a **MERITOR** brand

**EUCLID**

# MERITORPARTSONLINE.COM

Your 24/7/365 access to Meritor®, Euclid, Mascot and Meritor WABCO parts ordering, plus real-time pricing, parts comparisons and in-depth technical information.

©2013 Meritor, Inc. meritor.com



## **MERITOR AFTERMARKET PARTS WARRANTY**

We warrant all new parts for one year from date of shipment to the buyer against defective material or workmanship (but not against damage caused by accident, abuse or improper installation, maintenance or repair) when such parts are used on vehicles the specifications of which have been approved by our Engineering Department.

As the exclusive remedy under this warranty, we will, at our option, repair or replace such parts free of charge, or take back the nonconforming parts and refund the monies paid by buyer for such parts, if found on examination by us to be nonconforming and if any necessary return charges are prepaid.

If it is necessary to return any parts under this warranty, buyer agrees not to make any deduction on account thereof from remittances on current accounts while claims are in the process of disposition. Any expense incurred without our consent for repairs or replacement will not be allowed.

THIS WARRANTY IS EXPRESSLY IN LIEU OF ALL OTHER WARRANTIES OR CONDITIONS, EXPRESS, IMPLIED OR STATUTORY, INCLUDING ANY IMPLIED WARRANTY OF MERCHANTABILITY OR FITNESS FOR PARTICULAR PURPOSE. IN NO EVENT SHALL SELLER BE LIABLE FOR INCIDENTAL OR CONSEQUENTIAL DAMAGES OF ANY NATURE.

Only genuine Meritor replacement parts are covered by this aftermarket parts warranty.





**MERITOR<sup>®</sup>**

**Meritor Heavy Vehicle Systems, LLC**  
7975 Dixie Highway  
Florence, KY 41042 USA

**For more information:**

**U.S. 888-725-9355**

**Canada 800-387-3889**

**[MeritorPartsOnline.com](http://MeritorPartsOnline.com)**

**[meritor.com](http://meritor.com)**

Vehicle models, brands and names depicted herein are the property of their respective owners, and are not in any way associated with Meritor, Inc., or its affiliates.

Litho in USA Revised 06-13  
PB-1106 (CVA)  
©2012 Meritor, Inc.