



MERITOR™

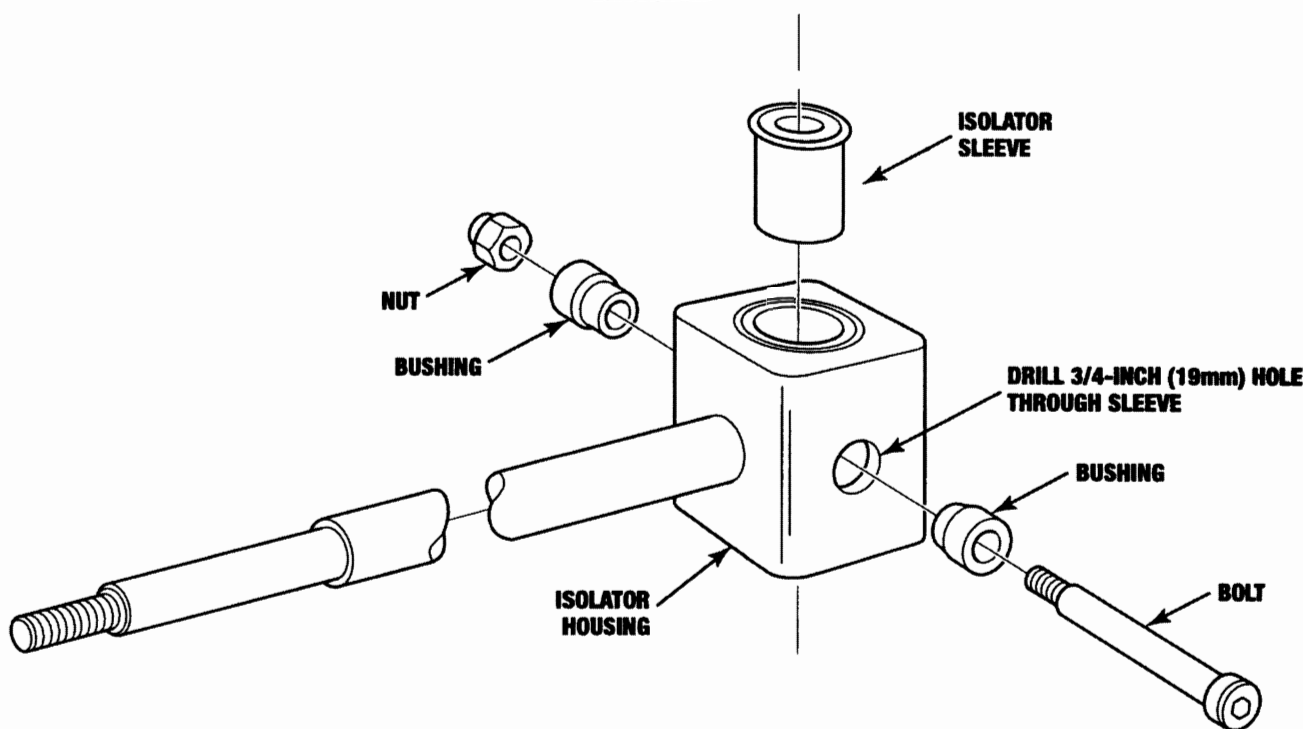
an **ArvinMeritor** brand

SERVICE PARTS INSTRUCTIONS

Isolator Sleeve Installation

Use the following instructions to install a new isolator sleeve, part number 2245-J-1076:

1. Remove the old sleeve from the isolator housing.
2. Clean and remove any nicks, scratches or burrs from isolator housing wall that might obstruct the new sleeve from pressing in easily.
3. Press new sleeve into isolator housing until sleeve is flush with housing opening.
4. Locate the two holes on the sides of the isolator housing. Drill or cut a 3/4-inch (19mm) hole through the sleeve. The holes locate and fasten the upper shift lever with the bolt, bushings and nut.



ArvinMeritor™

Commercial Vehicle Aftermarket

Meritor Heavy Vehicle Systems, LLC

7975 Dixie Highway
Florence, KY 41042 USA
888-725-9355
www.arvinmeritor.com

Information contained in this publication was in effect at the time the publication was approved for printing and is subject to change without notice or liability. ArvinMeritor reserves the right to revise the information presented or discontinue the production of parts at any time.

© 2003
ArvinMeritor, Inc.

Printed in U.S.A.

Issued 2/2003
PB-02101 (05060)