

EUCLID® AIR DISC BRAKE PORTFOLIO



TRUST MATTERS.

TRUST MATTERS

Euclid® high-quality, all-makes air disc brake (ADB) parts are designed and engineered for trusted performance with exceptional quality and value. The Euclid offering includes air disc brake pads, rotors and calipers you can rely on. Euclid parts are tested for performance to make sure they live up to their name. They deliver exceptional quality and value for commercial vehicles.



EUCLID AIR DISC BRAKE PADS

EUCLID MEGA™ BRAKE PADS

Designed and engineered to provide the high-quality performance you expect from Euclid, a highly trusted name in the commercial vehicle aftermarket.

EUCLID STOPMATE™ BRAKE PADS

Delivering one of the best value air disc brake pad solutions in the industry.



EUCLID BRAKE PAD SPECIFICATIONS

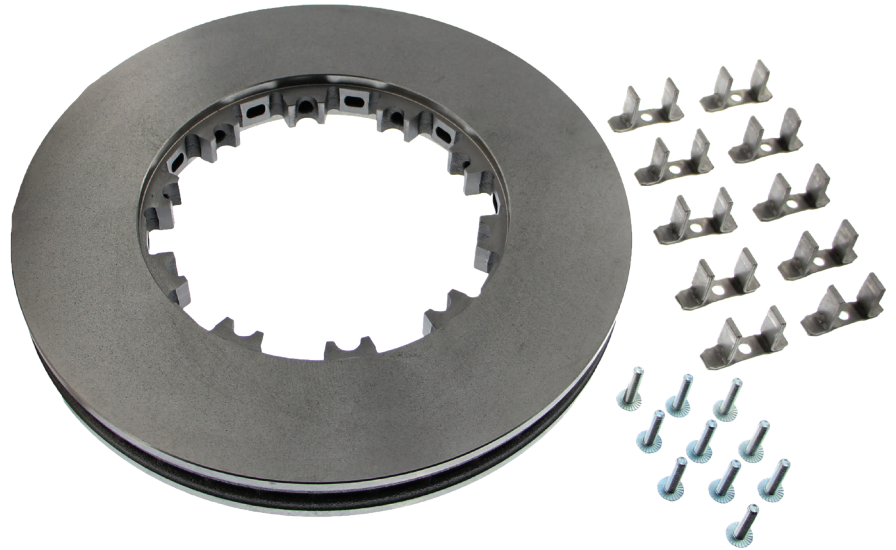
Performance Metric	Mega	Stopmate
Stopping Performance	Outstanding	Comparable to OEM
Wear Characteristics	Enhanced	Standard
Leaf Marking	N-type	N-type
Attaching Method	MRS Hooks	Wire Mesh
Coating	Powder Coated	Powder Coated

APPLICATIONS

FMSI	Mega	Stopmate	Length	Height	Manufacturer	Brake
1203	EMD1203AF	ED1203S	9 3/4"	4 5/16"	Bendix®	SN7
1311	EMD1311AF	ED1311S	9 13/16"	4 9/16"	Meritor®	EX225H
1369	EMD1369AF	ED1369S	8 1/4"	4 1/4"	Bendix®	ADB22X
1370	EMD1370AF	ED1370S	8 1/2"	4 1/4"	Meritor®	EX225L
1438	EMD1438AF	ED1438S	8 1/4"	3 5/8"	Wabco®	Pan 19
1518	EMD1518AF	ED1518S	6 15/16"	3 3/8"	Wabco®	Pan 17
1777	EMD1777AF	ED1777S	8 1/4"	4 1/4"	Wabco®	Pan 22
1777	EMD1777M22TAF	ED1777M22TS	8 1/4"	4 1/4"	Wabco®	Max 22T
2061	EMD2061AF	ED2061S	8 1/4"	4 1/4"	Wabco®	Maxxus

EUCLID® ROTORS

Round out your Euclid disc brake portfolio with rotors you can trust! All Euclid disc brake rotors are made from Meritor genuine specified metal for enhanced heat dissipation.



EUCLID AIR DISC BRAKE ROTORS

Rotor	Bolt Hole Number	Outside Diameter	Rotor Depth	ABS Tone Ring	Rotor Type	Application	OE Number
E-18200H	Splined	16.9" / 430 mm	1.8" / 45 mm	None	Flat		802569
E-18201HFP	10	16.9" / 430 mm	2.1" / 53 mm	Press-On	Flat	Cascadia Front	10083923
E-18202HRB	10	16.9" / 430 mm	2.1" / 53 mm	Bolt-On	Flat	Cascadia Rear	10083924
E-18203HTB	10	16.9" / 430mm	2.1" / 53 mm	Bolt-On	Flat	Trailer	10085623
E-18204	10	17.1" / 434 mm	5.2" / 134 mm	None	U Shape	Refuse / Severe Service	23 123642 015
E-18205H	10	16.9" / 430 mm	5.4" / 138 mm	None	U Shape		K038573
E-18206H	10	16.9" / 430 mm	5.9" / 150 mm	None	U Shape		K038574
E-18207	10	16.9" / 430 mm	5.9" / 150 mm	Bolt-On	U Shape	Tone Ring Flush with Outside Surface	S34172 006
E-18208	10	16.9" / 430 mm	5.9" / 150 mm	Bolt-On	U Shape	Tone Ring Countersunk 1-1/16"	CT807
E-18209	10	16.9" / 430 mm	6.3" / 160 mm	None	U Shape	Freightliner with Detroit Axle	10020682
E-18210	10	16.3" / 430 mm	5.9" / 150 mm	None	U Shape	Hendrickson Maxx22T	S34471



EUCLID® CALIPERS. YOU CHOOSE. YOU SAVE.

Introducing Euclid's comprehensive range of disc brake calipers, an innovative solution that simplifies inventory and minimizes downtime. With Euclid, you no longer need to stock multiple full calipers. Now, you can efficiently address specific fleet needs by easily mounting the required pad carrier on the housing, getting the truck back on the road with minimal downtime.

Moreover, Euclid offers additional cost savings to fleet customers by allowing them to reuse their existing carrier, only requiring the purchase of rationalized calipers. This helps to optimize warehouse space and empowers you to offer the entire Euclid product portfolio, catering to your customers' diverse demands effectively.

SIMPLIFIED INVENTORY MANAGEMENT

Stocking multiple full calipers is no longer necessary, which reduces the complexity of your inventory and saves valuable storage space.

MINIMAL DOWNTIME

Fleet operators can swiftly address brake caliper replacements by mounting the required disc brake caliper pad carrier, minimizing downtime and ensuring trucks are back on the road promptly.

COST SAVINGS

Euclid's approach allows fleet customers to reuse existing carriers, leading to cost savings and improved overall operational efficiency.

REMANUFACTURED TO OE SPECIFICATIONS

Euclid disc brake calipers are remanufactured by Cummins-Meritor, in our world class reman facility located in Plainfield, Ind. All castings are sand blasted, cleaned and remanufactured using a caliper coating that meets 200-hour salt spray testing. All wear items and worn components are replaced with parts approved by Cummins-Meritor engineering and all remanufactured calipers are fully tested to ensure customer satisfaction.

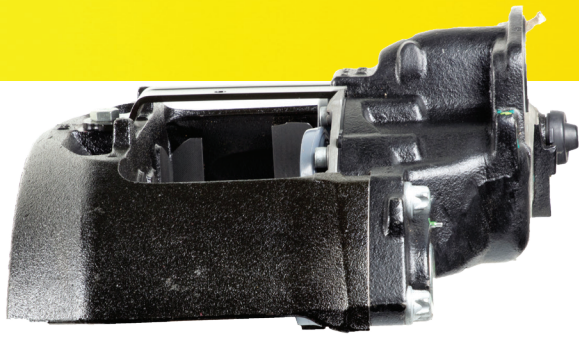


VERSATILE PRODUCT PORTFOLIO

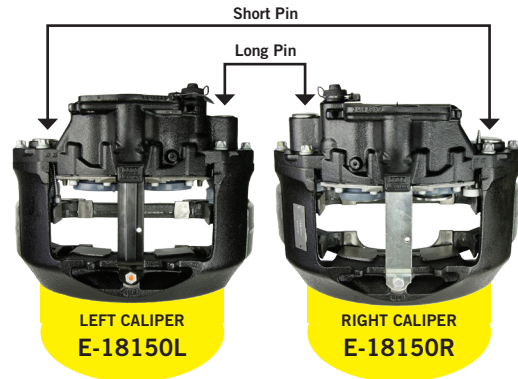
You can expand your Euclid product portfolio, meeting your customer's diverse demands and enhancing your reputation as a trusted supplier.

INCREASED CUSTOMER SATISFACTION

By providing a convenient and cost-effective solution, you can enhance customer satisfaction and loyalty, fostering long-term business relationships.



MERITOR® EX+™ H CALIPERS



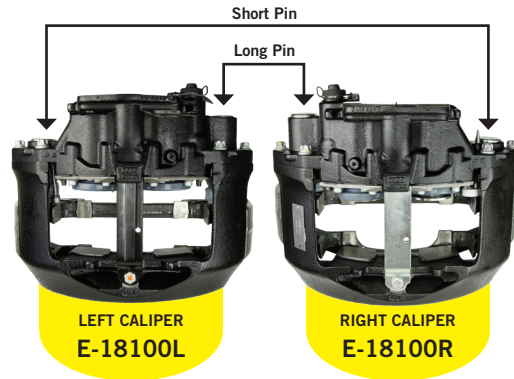
PAD CARRIERS



MERITOR EX+ H CALIPERS

Part Number	Name	Euclid Housing	Euclid Pad Carrier	Full Caliper
EX225H201R	Meritor	E-18150R	E-18020	E-18150R-20
EX225H201XX000	Meritor	E-18150R	E-18020	E-18150R-20
EX225H202R	Meritor	E-18150L	E-18020	E-18150L-20
EX225H202XX000	Meritor	E-18150L	E-18020	E-18150L-20
EX225H205XX000	Meritor	E-18150R	E-18021	
EX225H206XX000	Meritor	E-18150L	E-18021	
EX225H215R	Meritor	E-18150L	E-18023	
EX225H215XX101	Meritor	E-18150L	E-18023	
EX225H216R	Meritor	E-18150R	E-18023	
EX225H216XX101	Meritor	E-18150R	E-18023	
EX225H217R	Meritor	E-18150L	E-18022	
EX225H217XX101	Meritor	E-18150L	E-18022	
EX225H218R	Meritor	E-18150R	E-18022	
EX225H218XX101	Meritor	E-18150R	E-18022	
EX225H225XX101	Meritor	E-18150L	E-18023	
EX225H226XX101	Meritor	E-18150R	E-18023	
EX225H227XX101	Meritor	E-18150L	E-18022	
EX225H228XX101	Meritor	E-18150R	E-18022	

MERITOR® EX+™ L CALIPERS



PAD CARRIERS



E-18001 Axial Mount Left / E-18002 Axial Mount Right



E-18003 Meritor Trailer



E-18004 Volvo Axle Steer, 434 mm Rotor



E-18005 Volvo with Meritor, Axle Steer, 434 mm

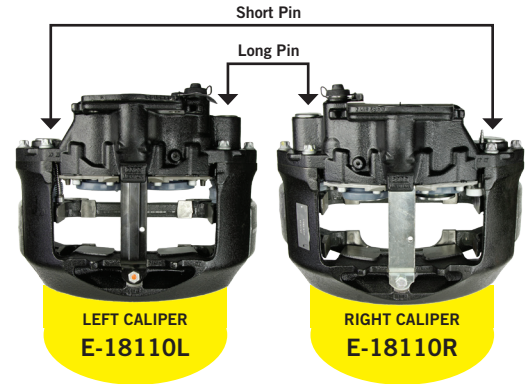


E-18006 Volvo Radial Drive Axle

MERITOR EX+ L CALIPERS

Part Number	Name	Euclid Housing	Euclid Pad Carrier	Full Caliper
EX225L235XX000	Meritor	E-18100L	E-18004	
EX225L236XX000	Meritor	E-18100R	E-18004	
EX225L237XX000	Meritor	E-18100L	E-18005	
EX225L238XX000	Meritor	E-18100R	E-18005	
EX225L247XX000	Meritor	E-18100L	E-18006	
EX225L248XX000	Meritor	E-18100R	E-18006	
EX225L257XX000	Meritor	E-18100L	E-18003	E-18100L-03
EX225L258XX000	Meritor	E-18100R	E-18003	E-18100R-03
EX225L261XX000	Meritor	E-18100L	E-18001	E-18100L-01
EX225L262XX000	Meritor	E-18100R	E-18002	E-18100R-02
EX225L265XX000	Meritor	E-18100L	E-18004	
EX225L266XX000	Meritor	E-18100R	E-18004	
EX225L267XX000	Meritor	E-18100L	E-18005	
EX225L268XX000	Meritor	E-18100R	E-18005	
EX225L269XX000	Meritor	E-18100L	E-18006	
EX225L270XX000	Meritor	E-18100R	E-18006	
EX225L271XX000	Meritor	E-18100L	E-18003	E-18100L-03
EX225L272XX000	Meritor	E-18100R	E-18003	E-18100R-03

BENDIX® ADB22X CALIPERS



PAD CARRIERS



BENDIX CALIPERS				
Part Number	Name	Euclid Housing	Euclid Pad Carrier	Full Caliper
99B90032	BBB	E-18110R		
99B90032-1	BBB	E-18110R	E-18030	E-18110R-30
99B90032-2	BBB	E-18110R	E-18031	E-18110R-31
99B90033	BBB	E-18110L		
99B90033-1	BBB	E-18110L	E-18030	E-18110L-30
99B90033-2	BBB	E-18110L	E-18031	E-18110L-31
99B90038	BBB	E-18120R		
99B90038-1	BBB	E-18120R	E-18032	E-18120R-32
99B90039	BBB	E-18120L		
99B90039-1	BBB	E-18120L	E-18032	E-18120L-32
802984	Bendix	E-18120R	E-18032	E-18120R-32
802985	Bendix	E-18120L	E-18032	E-18120L-32
K051583	Bendix		E-18030	
K081142	Bendix	E-18110R	E-18030	E-18110R-30
K081143	Bendix	E-18110L	E-18030	E-18110L-30
K081256	Bendix	E-18110R	E-18031	E-18110R-31
K081257	Bendix	E-18110L	E-18031	E-18110L-31
K081258	Bendix	E-18110R		
K081259	Bendix	E-18110L		
K097844SC	Bendix	E-18110R		
K097845SC	Bendix	E-18110L		

BENDIX CALIPERS (continued)				
Part Number	Name	Euclid Housing	Euclid Pad Carrier	Full Caliper
K097846SC	Bendix	E-18110R	E-18031	E-18110R-31
K097847SC	Bendix	E-18110L	E-18031	E-18110L-31
K097850SC	Bendix	E-18110R	E-18030	E-18110R-30
K097851SC	Bendix	E-18110L	E-18030	E-18110L-30
K147429X	Bendix	E-18110L	E-18030	E-18110L-30
K147430X	Bendix	E-18110R	E-18030	E-18110R-30
711-21N1XXXN	Dayton	E-18110R	E-18030	E-18110R-30
711-21N2XXXN	Dayton	E-18110L	E-18030	E-18110L-30
711-22N1XXXN	Dayton	E-18110R	E-18031	E-18110R-31
711-22N2XXXN	Dayton	E-18110L	E-18031	E-18110L-31
S-33647-2	Hendrickson	E-18120L	E-18032	E-18120L-32
S-33647-3	Hendrickson	E-18120R	E-18032	E-18120R-32
BL4400	Webb	E-18120L		
BL4400-40	Webb	E-18120L	E-18032	E-18120L-32
BL4700	Webb	E-18110L		
BL4700-41	Webb	E-18110L	E-18030	E-18110L-30
BL4700-42	Webb	E-18110L	E-18031	E-18110L-31
BR4400	Webb	E-18120R		
BR4400-40	Webb	E-18120R	E-18032	E-18120R-32
BR4700	Webb	E-18110R		
BR4700-41	Webb	E-18110R	E-18030	E-18110R-30
BR4700-42	Webb	E-18110R	E-18031	E-18110R-31



EUCLID® HIGH-QUALITY ALL-MAKES PARTS

Designed and engineered for trusted performance with exceptional quality and value for independent distributors and their customers.

EUCLID. THE MOST TRUSTED NAME IN TRUCK PARTS.

For over 80 years, Euclid has been a trusted brand for high-quality aftermarket parts. Once one of the world's leading companies in manufacturing off-highway, earthmoving and hauling equipment, Euclid commercial truck parts are still offered for light- to heavy-duty trucks under the Cummins-Meritor umbrella of aftermarket brands. The brand continues to offer customers an all-makes solution that is reliable and priced at a competitive value.



STRONG SERVICE AND SUPPORT

All Euclid aftermarket parts are covered by our complete 1-year warranty. For complete Euclid aftermarket parts information, visit [MeritorPartsXpress.com](https://www.MeritorPartsXpress.com) or call our U.S. Customer Care Center at 888-725-9355. In Canada, call 800-387-3889.



Cummins Inc.
Box 3005
Columbus, IN 47202-3005
U.S.A.

[cummins.com](https://www.cummins.com) | [MeritorPartsXpress.com](https://www.MeritorPartsXpress.com)