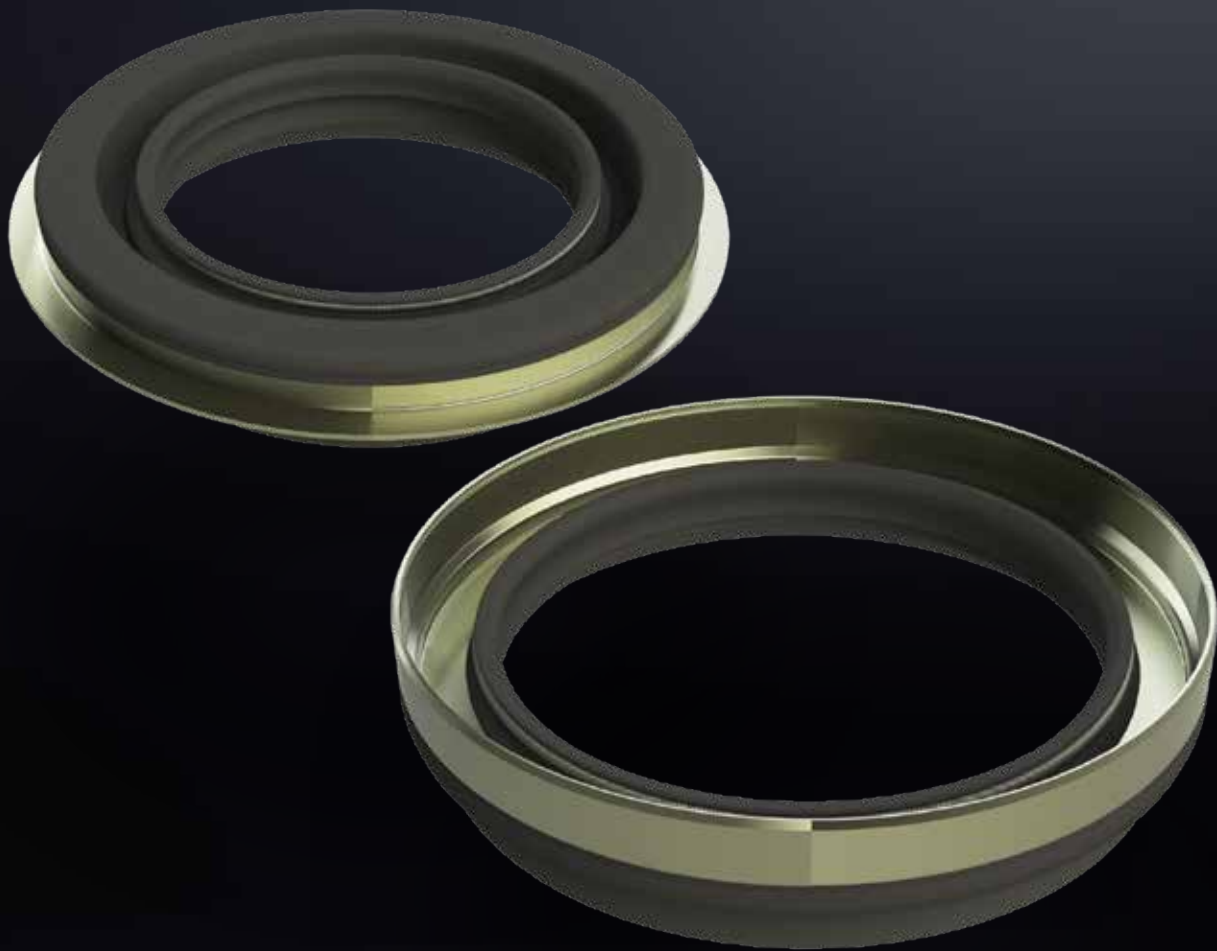


MERITOR® PINION SEALS

SEAL IN PERFORMANCE.



SEAL IN PERFORMANCE.

Meritor® pinion seals provide lasting durability and performance. They are designed with specially engineered fluoroelastomers, a multi-lip sealing system and a half metal-half rubber OD interface for OEM level performance. Meritor® pinion seals are molded and assembled in the U.S.A. and have a 2-year warranty.

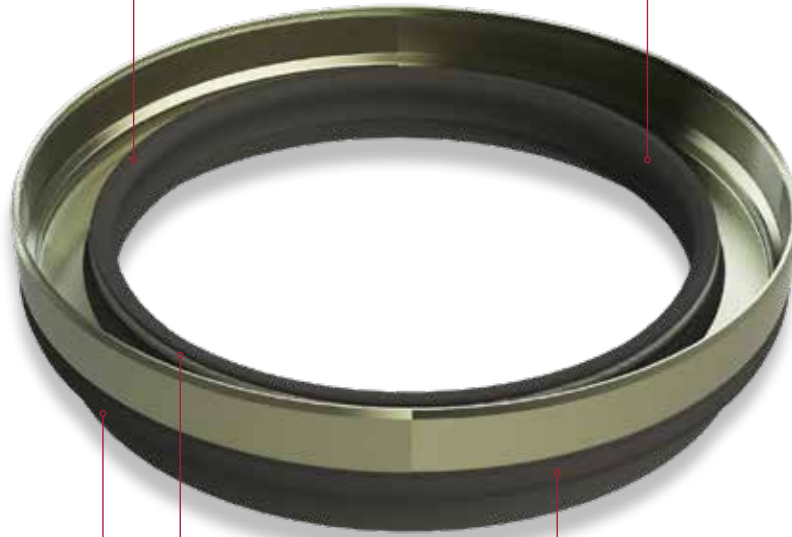
■ High Durability Performance

Specially engineered Fluoro-elastomer rubber ensures long lasting sealing under high heat for continuous running drive axle applications.



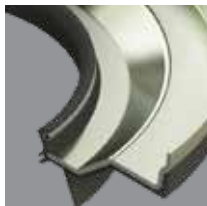
■ Reduces Contaminant

Ingress The multi-lip sealing system is designed to reduce the risk of contaminants making its way to the sealing lip.



■ Reduces Oil Leaks

The seal architecture is designed to limit potential leak paths.

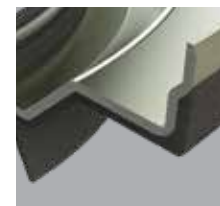


■ **Easy To Install** The seal can be installed easily with OEM recommended seal drivers.



■ Conforms To Defects In Mating

Parts The half metal-half rubber OD construction is designed to allow for conformance to defects in the mating bore surface, and enhance overall sealing performance.



Meritor® Pinion Seals Parts Cross Reference

AXLE FAMILY	POSITION	INDUSTRY PINION SEAL PART NO	MERITOR® SEAL PART #	INDUSTRY PINION NUT PART #	MERITOR® PINION NUT PART #
Dana® 404, 344, 405, 454	Forward Input	127591	127591-MTOR	128049	M12-128049
	Forward Output	127592	127592-MTOR	127588	M12-127588
	Rear Input	127591	12759 1-MTOR	127589	M12-127589
Dana® DSP40 / RSP40	Forward Input	127591	127591-MTOR	128049	M12-128049
	Forward Output	127592	127592-MTOR	127588	M12-127588
	Rear Input	127591	127591-MTOR	127589	M12-127589
Detroit Axle® RT40	Forward Input	MBA0139976646	A0139976646-MTOR	MBA 6819900252	-
	Forward Output	MBA0139976746	A0139976746-MTOR	-	-
	Rear Input	MBA0139976246	A0139976246-MTOR	MBA 6819900252	-
Meritor® 14X / 145	Forward Input	A1 1205X2728	A1 1205X2728	40X1233	40X1233
	Forward Output	A1 1205Y2729	A1 1205Y2729	40X1237	40X1237
	Rear Input	A1 1205Z2730	A1 1205Z2730	40X1237	40X1237
Meritor® 160	Forward Input	A1 1205X2728	A1 1205X2728	40X1233	40X1233
	Forward Output	A1 1205Y2729	A1 1205Y2729	40X1237	40X1237
	Rear Input	A1 1205Z2730	A1 1205Z2730	40X1237	40X1237



You Deserve Complete Support

Meritor® pinion seals are covered by our complete Meritor 2-Year aftermarket warranty. And they're backed by comprehensive product information, specifying assistance, product training and technical support from our expert field sales force. For the total service and support you deserve, call our Customer Care Center at (888) 725-9355. In Canada, call (800) 387-3889.

Your Xpress Lane For Uptime

Visit MeritorPartsXpress.com for fast access to parts ordering on Meritor® pinion seals and all Meritor Aftermarket brands, including Meritor® Genuine, Meritor®, Euclid® and Mach™ – with over 100,000 parts plus enhanced Xact Search, cross-references, product specs, catalogs and more – all you need to keep vehicles up and running.





Vehicle models, trademarks, brands, and names depicted herein are the property of their respective owners, and may not be associated with Meritor, Inc. or its affiliates.



Meritor Heavy Vehicle Systems, LLC
7975 Dixie Highway
Florence, Kentucky, 41042 USA

U.S. 888-725-9355
Canada 800-387-3889
MeritorPartsXpress.com
Meritor.com

©2021 Meritor, Inc.
Litho in USA, SP-2110
Issued 6/21 (13028)