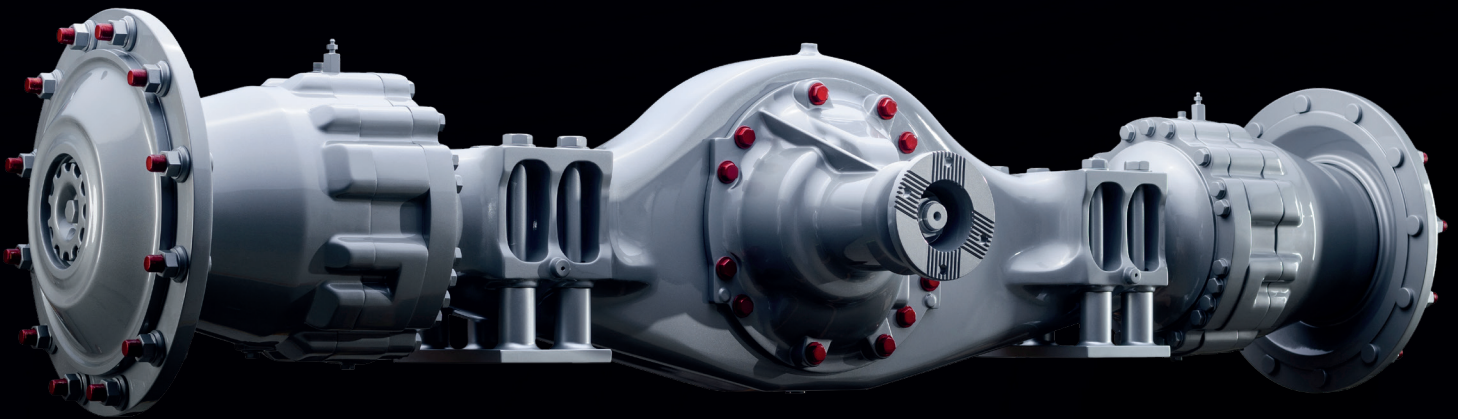


MERITOR® MCL 541 WHEEL LOADER AXLES



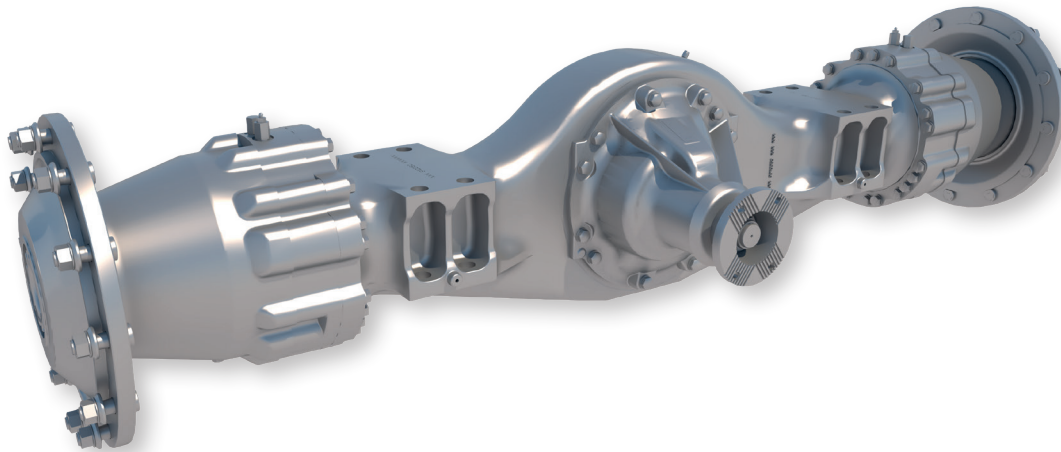
MERITOR MCL541 AXLE CUSTOM-ENGINEERED AND PURPOSE-BUILT FOR THE DEMANDS OF WHEEL LOADERS AND HEAVY CONSTRUCTION VEHICLES

Our unique engineering and manufacturing approach utilizes fabricated axle housings offering customized solutions for heavy construction vehicles and significantly reduced production lead times. Combined with a strong heritage in drivetrain technology, Meritor wheel loader axles provide unparalleled solutions for our customers.



FEATURES AND BENEFITS

- Debut model in wheel loader axle series; the newest segment of Meritor's global construction portfolio
- Modular design featuring proven Meritor components allows application flexibility
- Meritor 14X™ carrier has a proven high-efficiency design and increased reliability with a broad axle ratio coverage from 8.5 to 43.0
- Precision gearing expertise allows quiet operation compared to competition
- Additional configurations available



PERFORMANCE HIGHLIGHTS AND SPECIFICATIONS

Axle Rating	Carrier	Overall Axle Ratio	Wheel End	Brakes
Machines up to 4 cubic meter bucket capacity	14X	8.5 to 43.0	Family 5 planetary	360 mm wet disc

UNMATCHED CUSTOMER SUPPORT

Every Meritor axle is backed by unsurpassed service and support from Meritor DriveForce™ – plus the OnTrac™ technical support center. For more information, email: offhighway@meritor.com, call 866-OnTrac1 (866-668-7221) or visit meritor.com today.



Meritor Heavy Vehicle Systems, LLC
2135 West Maple Road
Troy, Michigan 48084 USA

Call 1-866-668-7221
or visit meritor.com

©2020 Meritor, Inc.
Litho in USA, SP-2092
Issued 03/20