

PERMANENTLY LUBRICATED FOR SERVICE-FREE PERFORMANCE

PERMALUBE™ RPL10 AND RPL14 SERIES MEDIUM-DUTY DRIVELINES

Keep your vehicles on the job and out of the service bay with Cummins-Meritor permanently lubricated driveline solutions. Tailored to medium-duty Class 6 and 7 vehicles, these drivelines complete the RPL family coverage for all drive shaft torque rating requirements. Service-free and sealed for life, keeping uptime up and costly service time down.

FEATURES

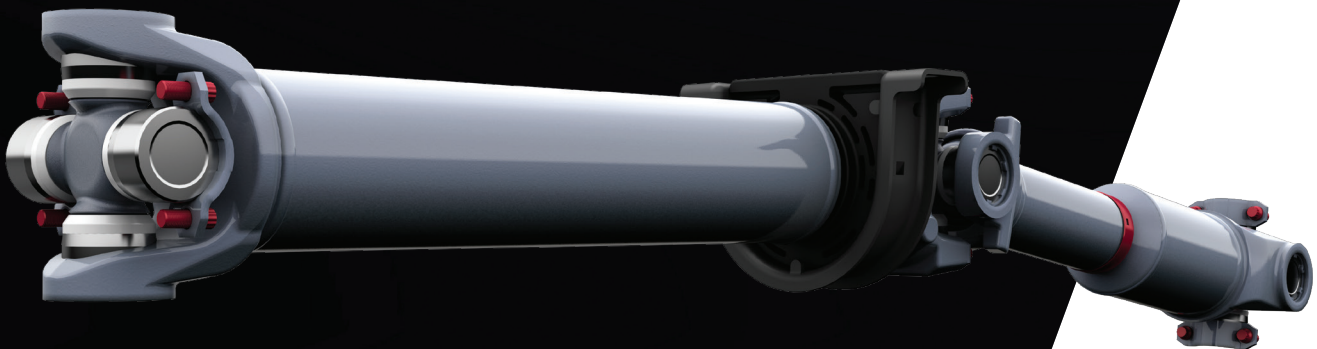
- Based on industry-leading Cummins-Meritor driveline technology
- No service needed, sealed for life
- Backward compatible with Cummins-Meritor's MXL product line

4 YEAR
400,000 MILE
GENERAL SERVICE WARRANTY

SERVICE-FREE
PERFORMANCE

LOWEST
LIFECYCLE COST
VS. CONVENTIONAL GREASABLE SYSTEMS

UP TO \$1056
IN LUBRICATION SAVINGS*



Meritor

**FOR
A WORLD
THAT'S
ALWAYS ON™**

ADVANCED PERMALUBE TECHNOLOGY AND RELIABILITY

Medium-duty deserves nothing less than the highest quality. Cummins-Meritor delivers with premium Permalube™ RPL Series drivelines. They are designed and manufactured to reduce service costs, providing durability and exceptional performance. Compatibility and installation are streamlined with Easy Service™ quick yoke connection points. Get the lowest lifecycle cost Cummins-Meritor driveline working for you today. Get Cummins-Meritor Permalube savings.

PRIMARY DESIGN ADVANTAGES



High-performance u-joint seal

- Triple-lip design for superior containment and protection
- One dirt excluder lip and two inward facing sealing lips
- Shroud and excluder seal lips prevent dirt and water ingress



Easy Service™ quick yoke connection points

- Four patch lock bolts
- Machined straps allow for simple installation and prevent cup rotation



- Permanently lubricated and sealed for life
- Maintenance-free—no greasing service required
- 4-year/400,000-mile general service warranty
- Completes RPL family coverage for all drive shaft torque rating requirements
- Polyglide™ nylon coating minimizes slip section axial loads by reducing friction
- Same torque ratings as current MXL series
- Compatibility with existing 17 and 16 Easy Service™ yoke portfolio

SPECIFICATIONS

	RPL10	RPL14
Tube size	4 in	4.09 in
Tubing inner diameter	3.78 in	3.73 in
Wall thickness	0.11 in	0.18 in
Swing diameter	7 in	7.8 in
Driveline rating	6,000 lb-ft (8,135 n-m)	10,000 lb-ft (13,558 n-m)
Application	Main	Main

PREMIUM SUPPORT

Every RPL driveline is backed by unsurpassed service and support with DriveForce™ – Cummins-Meritor's North American sales and service organization – and the OnTrac technical support center available to assist customers with solutions before, during and after the sale. For more information call **866-668-7221 (OnTrac1)** or visit **cummins.com**.



Cummins Inc.
Box 3005
Columbus, IN 47202-3005
U.S.A.

cummins.com

SP-20159
Bulletin 6466311 Produced in U.S.A. Rev. 3/23
©2023 Meritor, Inc.

*Assumes 8-year truck lifecycle and 32 greasing intervals with savings of \$33 per interval.