

MS-13X™ SINGLE DRIVE AXLE

IDEAL FOR MEDIUM-DUTY APPLICATIONS

As the world's largest independent manufacturer of commercial truck axles, Cummins-Meritor delivers performance, reliability and efficiency to meet the toughest demands. The MS-13X is a cost-effective, single drive axle engineered for medium-duty applications. Designed for exceptional durability and weight savings, the MS-13X is ideal for class 6 and 7 trucks and buses.

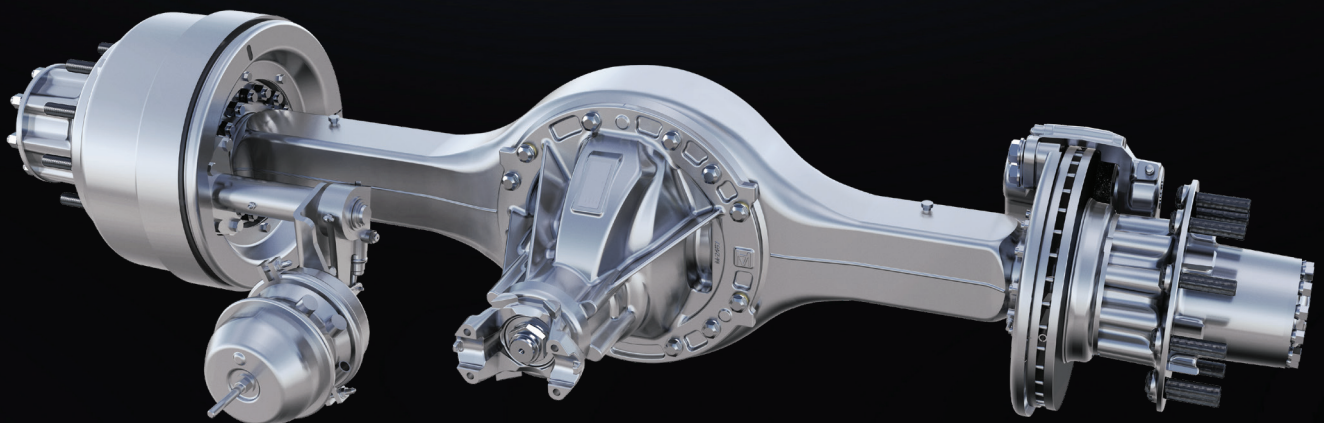
PERFORMANCE ADVANTAGES

- Up to 59 pounds lighter than the MS-14X carrier
- Wide range of ratios: 3.90 - 6.50
- Ease of implementation – utilizes same housing as 14X/145 designs
- Innovative, power dense design ideal for medium-duty applications


**REDUCED
LIFECYCLE
COSTS**


**59 LBS
WEIGHT
REDUCTION**


**MEDIUM
DUTY**
CLASS 6-7



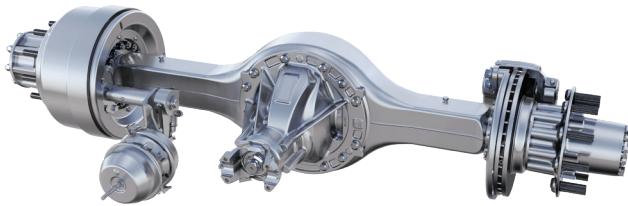
Meritor

MS-13X SINGLE DRIVE AXLE

With more than 110 years of axle manufacturing expertise, Cummins-Meritor has provided innovative solutions for a broad range of vehicle applications. The MS-13X axle brings Cummins-Meritor's legendary durability and efficiency to the medium-duty market.

FEATURES

- 17,000-pound – 21,000-pound gross axle weight rating (GAWR)
- 41,000-pound gross vehicle weight (GVW)/gross combined weight (GCW)
- Parking brake compatible
- Compatible with drum or disc brakes



WARRANTY COVERAGE

Axle warranty is 2 years/unlimited miles, with parts and labor included. Every claim is fully supported by OnTrac™. Call **866-668-7221 (OnTrac1)**.

UNMATCHED CUSTOMER SUPPORT

Every Cummins-Meritor MS-13X axle is backed by unsurpassed service and support, with DriveForce™ – Cummins-Meritor's North American sales and service organization – and the OnTrac technical support center available to assist customers with solutions before, during and after the sale. For more information, call **866-668-7221 (OnTrac1)** or visit cummins.com today.

MS-13X SINGLE DRIVE AXLE SPECIFICATIONS

	MS-17-13X		MS-19-13X		MS-21-13X
Gross axle weight rating (GAWR)	17,000 lbs		19,000 lbs		21,000 lbs
Gross combined weight (GCW) highway	41,000 lbs		41,000 lbs		41,000 lbs
Standard ratios	3.90, 4.11, 4.33, 4.63, 4.88, 5.13, 5.29, 5.57, 5.83, 6.17, 6.50		3.90, 4.11, 4.33, 4.63, 4.88, 5.13, 5.29, 5.57, 5.83, 6.17, 6.50		3.90, 4.11, 4.33, 4.63, 4.88, 5.13, 5.29, 5.57, 5.83, 6.17, 6.50
Ring gear pitch diameter	13.97 in (355 mm)		13.97 in (355 mm)		13.97 in (355 mm)
Axle shaft spline size	2 in (51 mm) 39 teeth	2.1 in (53 mm) 41 teeth	2 in (51 mm) 39 teeth	2.1 in (53 mm) 41 teeth	2.1 in (53 mm) 41 teeth
Axle shaft body diameter	1.81 in (46 mm)	1.88 in (48 mm)	1.81 in (46 mm)	1.88 in (48 mm)	1.88 in (48 mm)
Housing box size	5.25 in x 4.62 in (133 mm x 117 mm)		5.25 in x 4.62 in (133 mm x 117 mm)		5.25 in x 4.62 in (133 mm x 117 mm)
Housing wall thickness	0.375 in (9.5 mm)		0.375 in (9.5 mm), 0.437 in (11 mm)		0.375 in (9.5 mm), 0.437 in (11 mm)
Wheel-end series	L	R	L	R	R



Cummins Inc.
Box 3005
Columbus, IN 47202-3005
U.S.A.

cummins.com