

MERITOR® 16.5" X 7" BRAKE DRUM FAMILY FOR THE AFTERMARKET



MERITOR

IDEAS DRIVING RESULTS

A STRATEGIC BRAKE DRUM PORTFOLIO ENGINEERED
TO BETTER MATCH APPLICATIONS





ONE 16.5" X 7" BRAKE DRUM FAMILY. MANY SIGNIFICANT ADVANTAGES.

When you replace truck or trailer drums, now you can replace them with a better idea – the Meritor® 16.5" x 7" brake drum family. The drums are engineered to be a better fit for a broader range of fleet applications. And they're designed, engineered and tested by Meritor to drive the results that today's medium- and heavy-duty fleet customers demand.

Included is our premium Meritor SteelLite X30™ one-piece roll-formed lightweight brake drum with the strength to handle high duty cycles while reducing vehicle weight over 300 lbs per tractor/trailer combination*; our Heavy-Duty Cast Brake Drum for heavy stop-and-go waste/refuse applications; our Standard-Duty Cast Brake Drum, which improves resistance to heat-checking for normal to moderate duty cycles; and our Opti-Cast™ Brake Drum, which reduces metal weight to provide durable performance and operational cost savings in light to medium duty cycles with a 23,000-lb gross vehicle weight (GVW) rating, and full FMVSS 121 compliance.

The Meritor 16.5" x 7" brake drum family delivers it all, and it's backed by unsurpassed Meritor service and support, including our 1-year/unlimited-mileage warranty.

The Best Drum Family Deserves The Best Support.

Meritor drums come with the best technical advice, service, support and warranty available. Visit MeritorPartsOnline.com for our industry-leading online catalog and ordering and tracking system, with real-time access to complete parts information resources. Or call our Customer Care Center at 888-725-9355. In Canada, call 1-800-387-3889.



*As compared with full-cast drums with 16.5" x 5" front brakes and 16.5" x 8 5/8" tandem rear and trailer brakes.



MERITOR®

IDEAS DRIVING RESULTS

As a world leader in providing aftermarket solutions for the global commercial vehicle and industrial markets, Meritor is committed to providing our customers with innovative aftermarket ideas that deliver the results you need to get the job done faster, better and more efficiently.



Meritor Heavy Vehicle Systems, LLC
7975 Dixie Highway
Florence, Kentucky 41042 USA

U.S. 888-725-9355
Canada 800-387-3889
meritor.com
MeritorPartsOnline.com



©2014 Meritor, Inc.
Litho in USA SP-1521 (13028/11900)
Issued 12-14

MERITOR® HEAVY-DUTY CAST 16.5" X 7" BRAKE DRUMS



MERITOR

Meritor Heavy-Duty Cast Brake Drums, For Unsurpassed Performance In Severe-Duty Applications.

Performance Advantages:

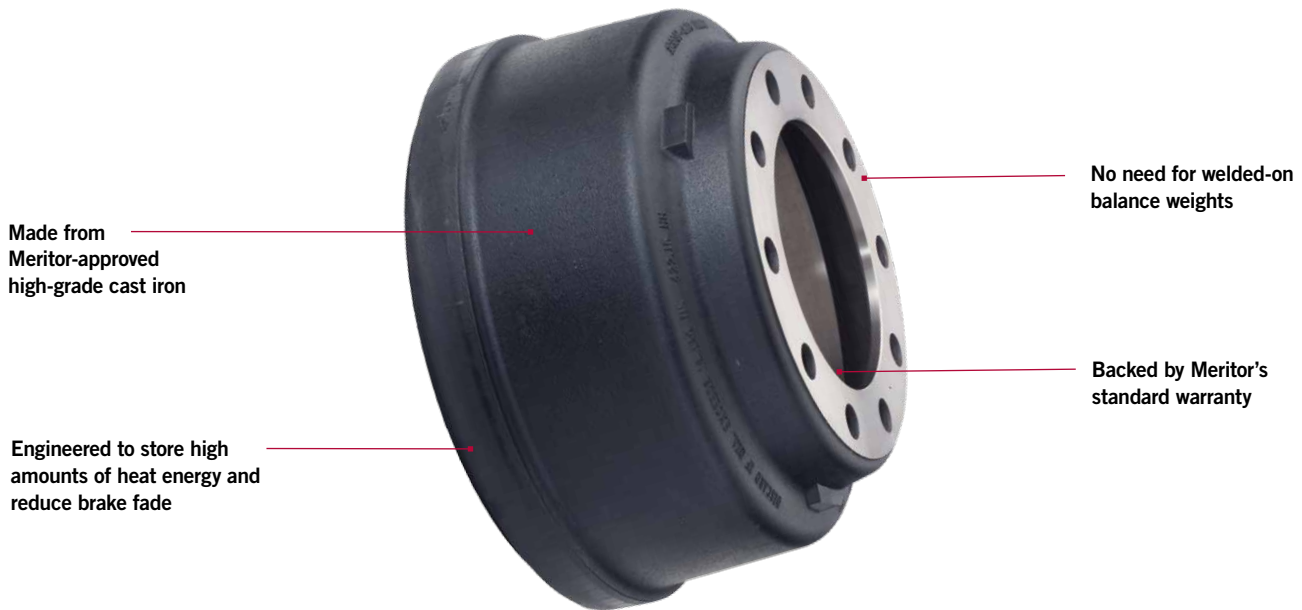
- Designed, tested and approved by Meritor specifically for severe-duty applications
- Engineered for strength at 122 lbs, on average 3-12 lbs heavier than the competitive drums, for improved heat absorption and dissipation
- Durability superior to that of competitive heavy-duty cast drums
- Available in single, pallet or trailer-load quantities



 **IDEAS DRIVING RESULTS**

OUR BRAKE DRUM SOLUTIONS FOR SEVERE-DUTY APPLICATIONS COMBINE HIGH STRENGTH AND DURABILITY

MERITOR HEAVY-DUTY CAST 16.5" X 7" BRAKE DRUMS



Heavy-Duty Cast 16.5" X 7" Drum Specifications*

Meritor Drum Part No.	Type	Overall Depth (in)	Braking Surface Width (in)	Pilot Diameter (in)	Bolt Circle (in)	Bolt Hole No.	Bolt Hole Size (in)	Meritor Weight (lbs)	GAWR	Webb Part No.	Gunite Part No.
03-123365-002	Unbalanced	10.59	7.75	8.78	11.25	10	.94	122	26,000	66884F	3600A
85-123365-002	Balanced	10.59	7.75	8.78	11.25	10	.94	122	26,000	66884B	3600AX

*Available in other brake size configurations – consult PB-2006.

Features and Benefits

- Available machine-balanced or unbalanced
- Ideal for severe-duty applications, freight hauling, refuse and more
- Allows customers to haul more weight at the 26,000 gross vehicle weight (GVW) rating while providing full FMVSS 121 compliance
- Designed for tractor, trailer and vocational applications across normal to high duty cycles
- Compatible with most popular wheel-end configurations and axle ratings
- Superior resistance to heat checking and brake fade
- Ideal for aftermarket use

For more information, visit MeritorPartsOnline.com, see Literature on Demand at Meritor.com/LOD or call our Customer Care Center at 888-725-9355. In Canada, call 1-800-387-3889.

Product models, brands and names depicted herein are the property of their respective owners, and are not in any way associated with Meritor, Inc., or its affiliates.



Meritor Heavy Vehicle Systems, LLC
7975 Dixie Highway
Florence, Kentucky 41042 USA

U.S.: 888-725-9355
Canada: 800-387-3889
meritor.com
MeritorPartsOnline.com



©2014 Meritor, Inc.
Litho in USA SP-1525 (13028/11900)
Issued 12-14

MERITOR® STANDARD-DUTY CAST 16.5" X 7" BRAKE DRUMS

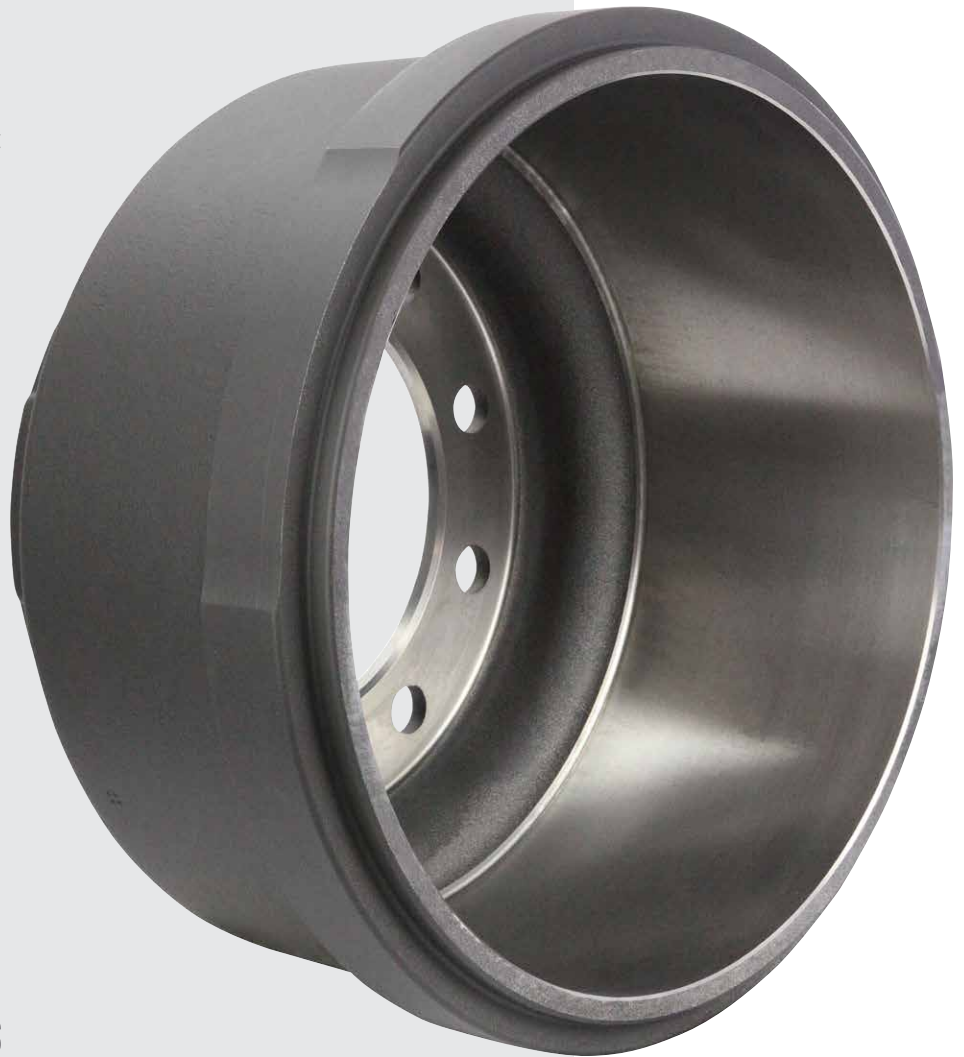


MERITOR

*Meritor Standard-Duty Cast Brake Drums,
For Unsurpassed Performance On The Road.*

Performance Advantages:

- Designed, tested and approved by Meritor for higher performance in standard-duty applications
- Engineered for long-lasting performance at 116 lbs, on average 4-8 lbs heavier than competitive drums, for maximum heat absorption and dissipation
- Durability superior to that of competitive standard cast brake drums
- Available in single, pallet or trailer-load quantities
- A popular choice for trailer applications – represents 80 percent of drums spec'd for trailers



 **IDEAS DRIVING RESULTS**

**SUPERIOR DRUM SOLUTIONS THAT INCREASE RESISTANCE
TO HEAT CHECKING, FOR NORMAL DUTY CYCLES**

MERITOR STANDARD-DUTY CAST 16.5" X 7" BRAKE DRUMS



Standard Cast 16.5" x 7" Drum Specifications*

Meritor Drum Part No.	Type	Overall Depth (in)	Braking Surface Width (in)	Pilot Diameter (in)	Bolt Circle (in)	Bolt Hole No.	Bolt Hole Size (in)	Meritor Weight (lbs)	GAWR	Webb Part No.	Gunite Part No.	KIC Part No.
03-123207-002	Unbalanced	10.54	7.46	8.78	11.25	10	1.04	116	26,000	66864F	3600A	60001-01
85-123207-002	Balanced	10.54	7.46	8.78	11.25	10	1.04	116	26,000	66864B	3600AX	60001-018

*Available in other brake size configurations – consult PB-2006.

Features and Benefits

- Available machine-balanced or unbalanced
- Allows customers to haul more weight at the 26,000 gross vehicle weight (GVW) rating while providing full FMVSS 121 compliance
- Designed for both tractor and trailer applications across normal to moderate duty cycles
- Compatible with most popular wheel-end configurations and axle ratings
- Superior resistance to heat checking
- Ideal for aftermarket use

For more information, visit MeritorPartsOnline.com, see Literature on Demand at Meritor.com/LOD or call our Customer Care Center at 888-725-9355. In Canada, call 1-800-387-3889.

Product models, brands and names depicted herein are the property of their respective owners, and are not in any way associated with Meritor, Inc., or its affiliates.



Meritor Heavy Vehicle Systems, LLC
7975 Dixie Highway
Florence, Kentucky 41042 USA

U.S.: 888-725-9355
Canada: 800-387-3889
meritor.com
MeritorPartsOnline.com

©2014 Meritor, Inc.
Litho in USA SP-1523 (13028/11900)
Issued 12-14



MERITOR® OPTI-CAST™ 16.5" X 7" BRAKE DRUMS



MERITOR

Meritor Opti-Cast Brake Drums Combine Cost Efficiency And Superior Performance On The Road.

Performance Advantages:

- Designed, tested and approved by Meritor for economical, lasting performance in light and standard duty on-highway applications
- Engineered for optimal weight at 103.5 lbs, for maximum heat absorption and dissipation
- Durability superior to that of competitive economical brake drums – thanks to enhanced alloy blending, for increased strength and performance
- Available in single, pallet or trailer-load quantities



IDEAS DRIVING RESULTS

**SUPERIOR DRUM SOLUTIONS FOR OPTIMAL
PERFORMANCE AND COST OF OWNERSHIP**

MERITOR OPTI-CAST 16.5" X 7" BRAKE DRUMS



Standard Cast 16.5" x 7" Drum Specifications

Meritor Drum Part No.	Type	Overall Depth (in)	Braking Surface Width (in)	Pilot Diameter (in)	Bolt Circle (in)	Bolt Hole No.	Bolt Hole Size (in)	Meritor Weight (lbs)	GAWR	Webb Part No.	Gunite Part No.	KIC Part No.
03-123788-002	Unbalanced	10.54	7.46	8.78	11.25	10	1.08	103.5	23,000	56864F	—	—
85-123788-002	Balanced	10.54	7.46	8.78	11.25	10	1.08	103.5	23,000	56864B	3922X	60000-018

Features and Benefits

- Available machine-balanced or unbalanced
- Ideal for over-the-road freight-hauling applications
- Allows customers to haul more weight at the 23,000 gross vehicle weight (GVW) rating while providing full FMVSS 121 compliance
- Designed for both tractor and trailer applications across light to normal duty cycles
- Compatible with most popular wheel-end configurations and axle ratings
- Ideal for aftermarket use

For more information, visit MeritorPartsOnline.com, see Literature on Demand at Meritor.com/LOD or call our Customer Care Center at 888-725-9355. In Canada, call 1-800-387-3889.

Product models, brands and names depicted herein are the property of their respective owners, and are not in any way associated with Meritor, Inc., or its affiliates.



Meritor Heavy Vehicle Systems, LLC
7975 Dixie Highway
Florence, Kentucky 41042 USA

U.S.: 888-725-9355
Canada: 800-387-3889
meritor.com
MeritorPartsOnline.com

©2014 Meritor, Inc.
Litho in USA SP-1524 (13028/11900)
Issued 12-14

