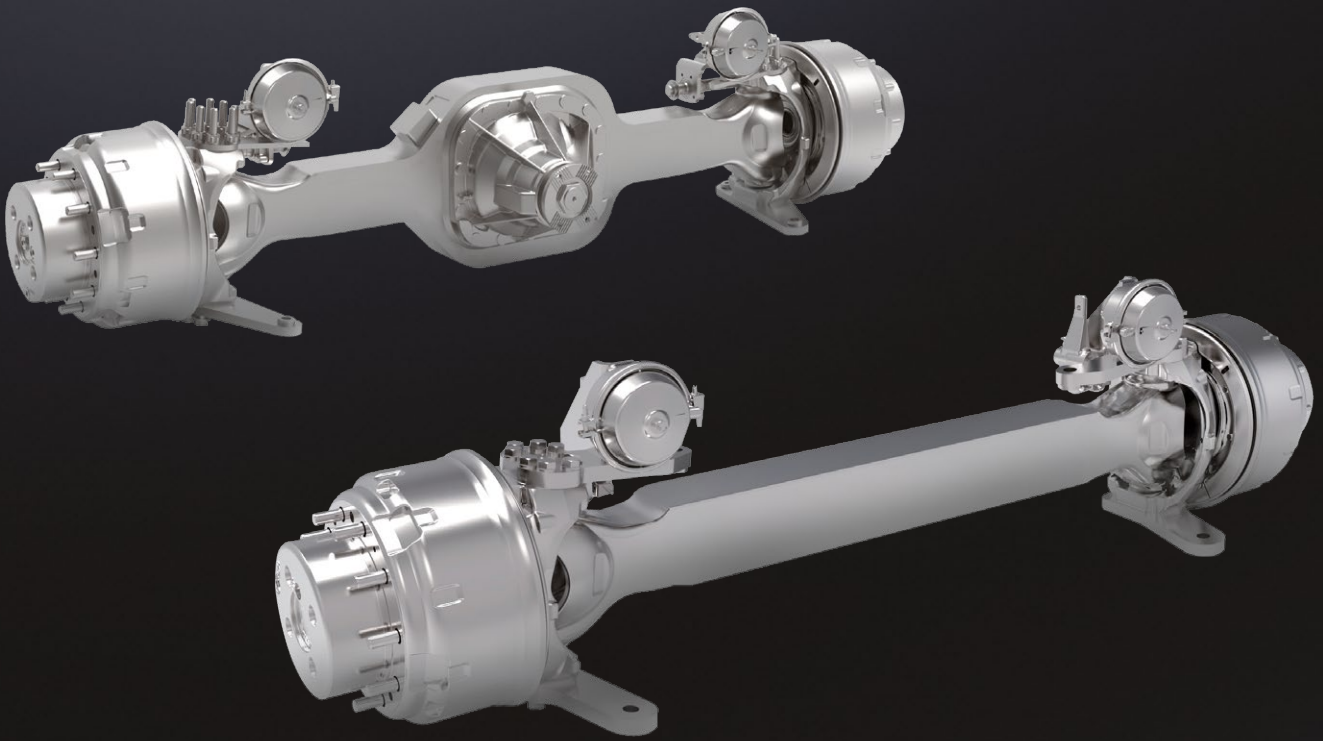


MERITOR® MOX-32/MON-32 SERIES AXLES



MOX-32/MON-32 SERIES AXLES

BUILT TOUGHER THAN THE CHALLENGE.

Meritor, supported by a 100-year legacy of innovative industry leadership, is known for taking axle performance to extremes. Our heavy-duty Meritor MOX-32 planetary front drive steer and MON-32 front non-drive axles are designed, engineered and manufactured to meet the growing global demand for extreme performance and higher capacity in the toughest off-highway applications. From logging and mining operations to airport support, material handling and more. Backed by an intensive testing and validation process, it is exactly what you expect from one of the world's leading independent truck axle manufacturers.

MOX-32 AND MON-32 AXLES.

SPECIFICATIONS	MOX-32 PLANETARY FRONT DRIVE STEER AXLE	MON-32 FRONT NON-DRIVE STEER AXLE
Gross Axle Weight Rating (GAWR)	32,000 lbs.	32,000 lbs.
Steering - KPI	65.9" (1674mm)	65.9" (1674mm)
Steering - Turn Angle	42 Degree Max	45 Degree Max
Brakes (Optional)	16.5" Drum or Air Disk	16.5" Drum or Air Disk
Wheel Bolt Circle Diameter	335mm	335mm
Housing	Fabricated Plate Steel	Fabricated Plate Steel
Housing - Box	140mm x 165mm Box	140mm x 165mm Box
Wheel Mount Distance (WMT)	92.9" (2360mm)	92.9" (2360mm)
Yoke/Flanges	Wide Range of Available Options	N/A
Differential	Open or DCDL	N/A
Carrier - Types	14X & DS70	N/A
Axle Ratio Coverage	3.46 - 24.82	N/A
Wheel End Gearing - Ratio	3.46: 1	N/A
Wheel End Gearing - Type	Meritor P6, with 4 Planets	Non-Drive

UNMATCHED CUSTOMER SUPPORT.

Every Meritor axle is backed by unsurpassed service and support from Meritor DriveForce™ - plus the OnTrac™ technical support center. For more information, email: offhighway@meritor.com, call 866-OnTrac1 (866-668-7221), or visit meritor.com today.

FEATURES AND BENEFITS

- Provides maximum gross axle weight rating (GAWR) of 32,000 lbs
- Axle housings formed and welded from rolled steel plate to ensure high reliability and modular design capability
- Proven Meritor 14X™ and DS70 axle carriers with a broad axle ratio coverage from 3.46 to 24.82 ensuring flexibility, productivity and performance (MOX-32 only)
- Dual steer arms for greater control in rough environments
- Meritor P6, 4 planet wheel ends provide a common, robust gearing configuration designed for the toughest off-highway applications (MOX-32 only)
- Optional driver-controlled differential lock (DCDL) for enhanced traction
- Anti-lock braking system (ABS) capability delivers improved stopping performance and safety
- 16.5" drum or air disc brake (ADB) option
- Optional Central Tire Inflation (CTI-ready) compatibility
- Covered by our standard Meritor off-highway warranty – 1-Year/Unlimited-Mileage/Parts only
- Assembled in the U.S.A., with a lead time of just 60 days

