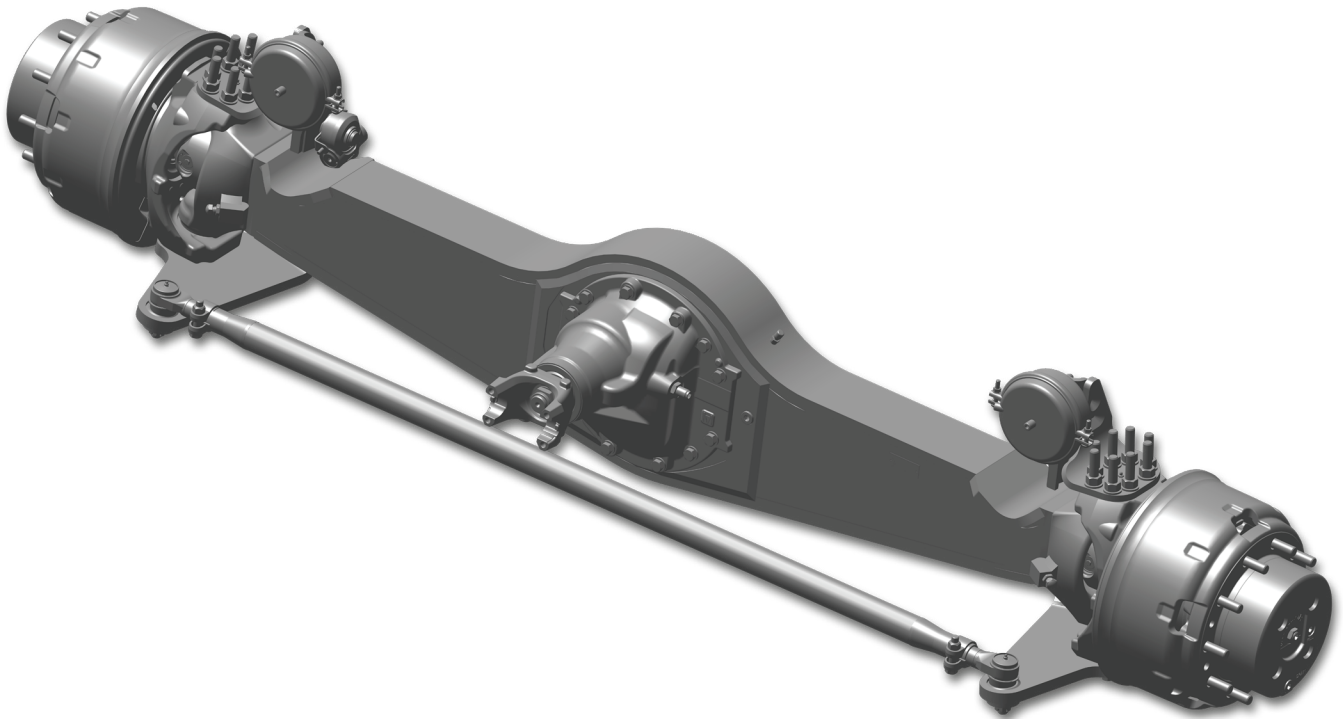
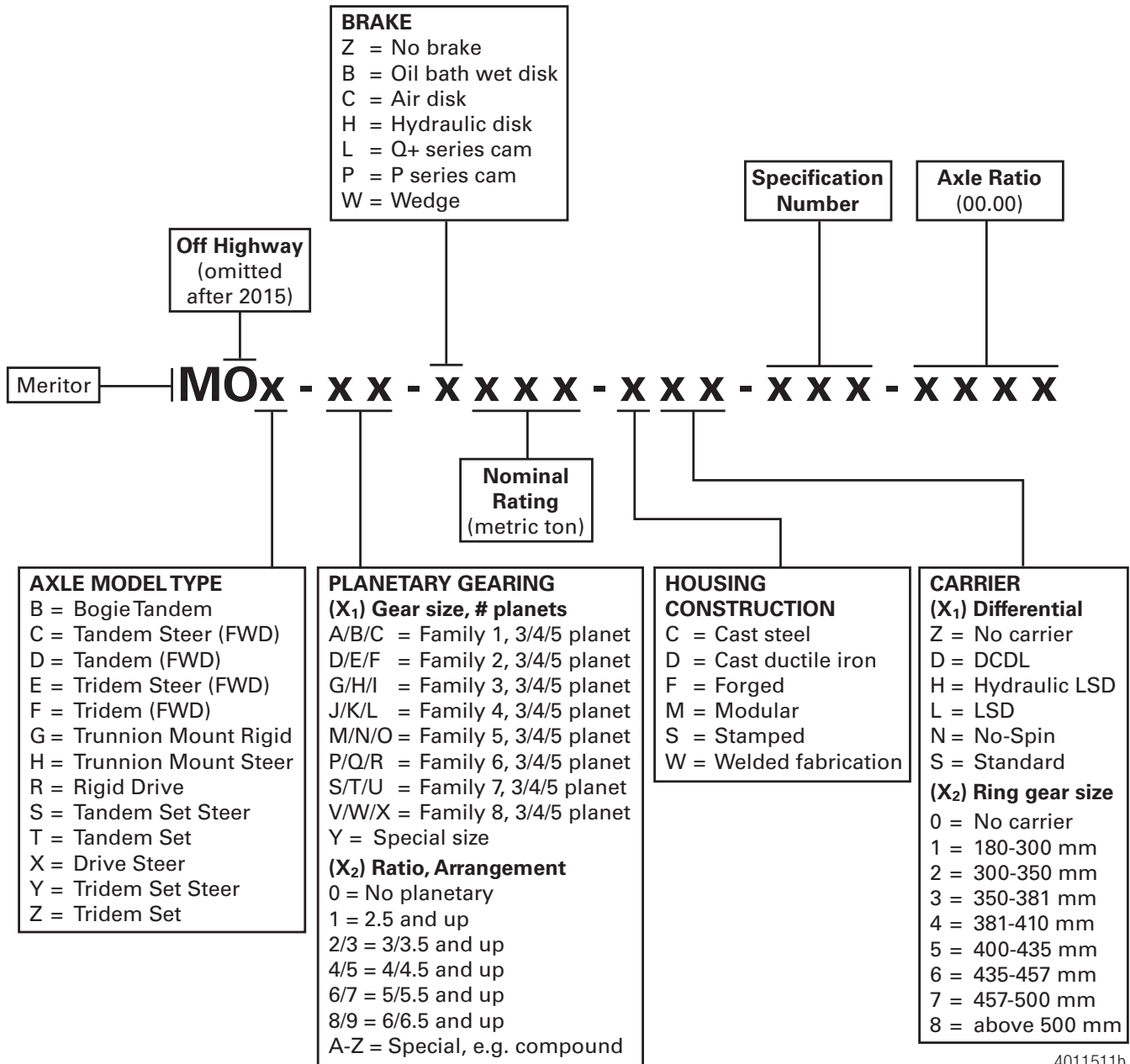


MXH2PW SINGLE TIRE HIGH SPEED DRIVE STEER AXLE

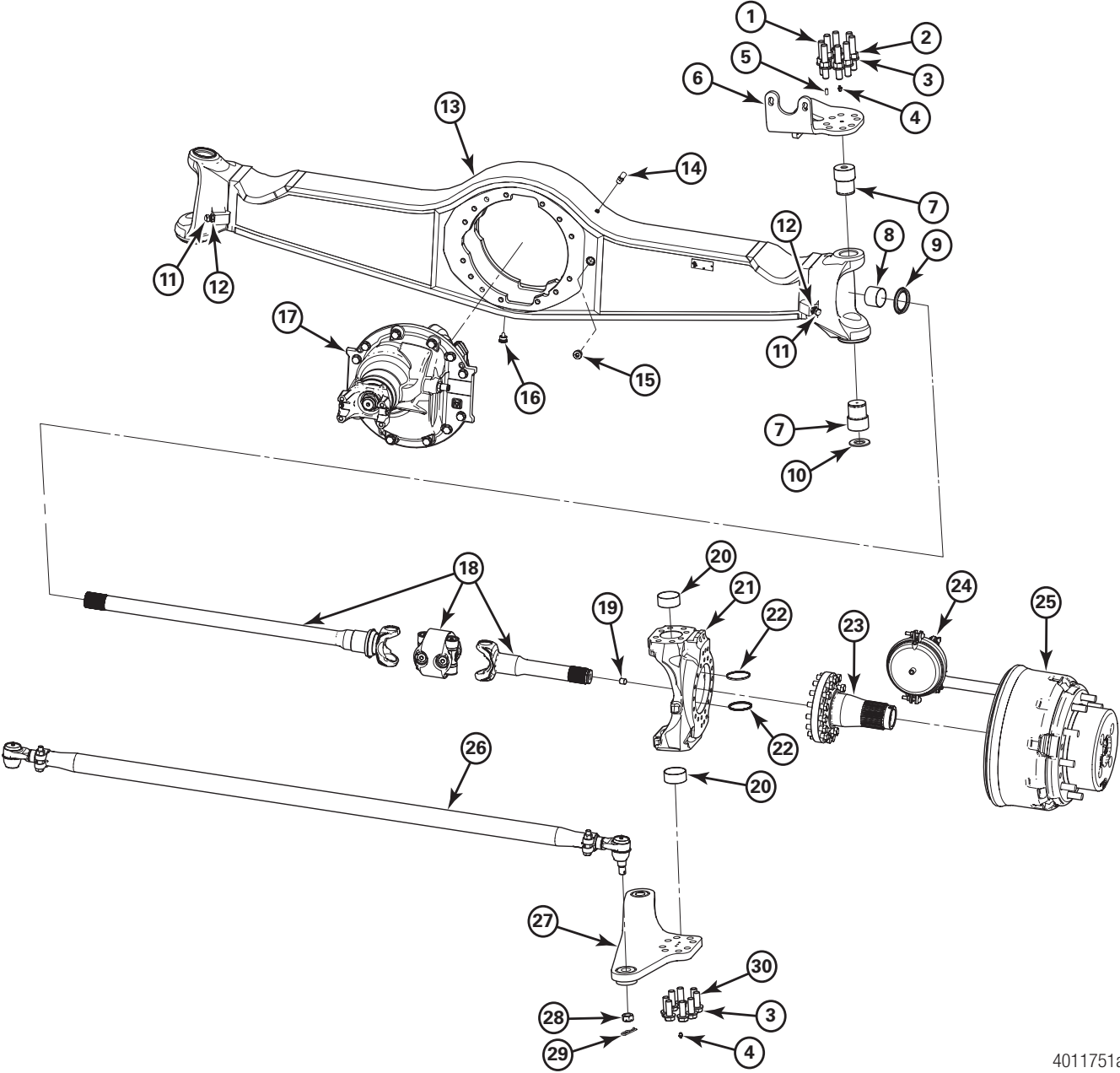


OFF HIGHWAY AXLE IDENTIFICATION



4011511b

MXH2PW STEER AXLE FABRICATED HOUSING

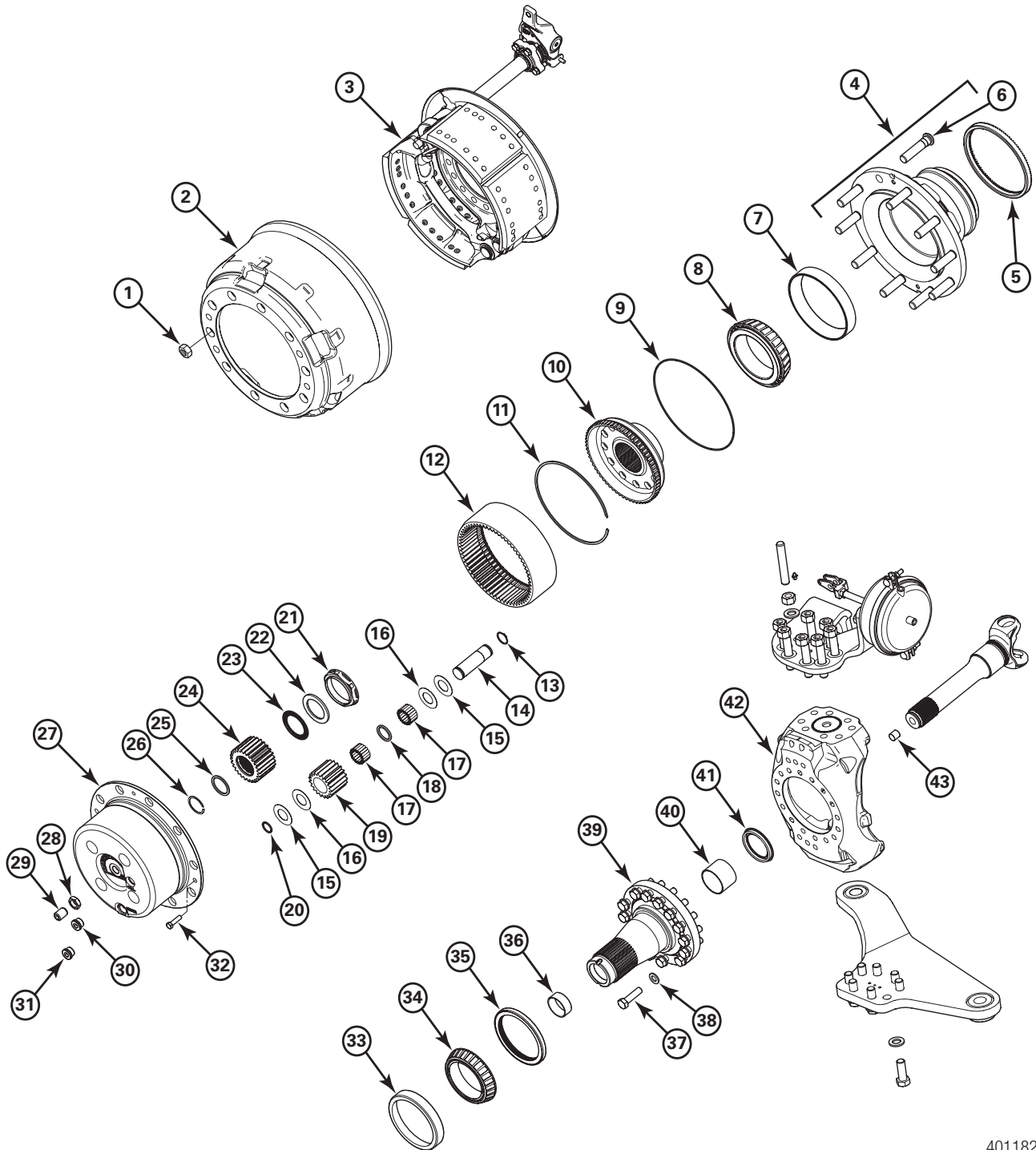


4011751a

MXH2PW STEER AXLE

ITEM	PART NUMBER	DESCRIPTION	QUANTITY (PER AXLE)	REMARKS
1	44X-1245	Bracket-to-Knuckle Stud	16	M20x2.5 - 120 mm
2	MN-320-M1	Nut	16	M20
3	MWA-520	Hardened Washer	32	M20
4	1898-R-720	Zerk Fitting (Grease 90°)	4	Upper/Lower
5	43X-1266	Spirol Pin	4	
6	A-3299-D-7570	Chamber Support Bracket	1	RH (S-Cam Bearing Support)
	A-3299-E-7571	Chamber Support Bracket	1	LH (S-Cam Bearing Support)
7	3101-Y-1091	King Pin	4	Upper/Lower
8	1225-L-1442	Axle Shaft (Housing) Bushing	2	
9	A1205-U-2647	Axle Shaft (Housing) Seal	2	
10	1229-X-5146	Thrust (King Pin) Washer	2	Lower
11	26X-1068	Special (Steering Stop) Bolt	2	M16x1.5 - 70 mm
12	1227-U-1737	(Steering Stop) Nut	2	M16
13	A2-3801-Z-1769	Axle Housing	1	
14	P-26	Plug (Breather Location)	1	Cust install A 1199-W-4053
15	981280	Oil Fill Plug	1	Non Magnetic
16	981281	Oil Drain Plug	1	Magnetic
17	A5-3200G2217-264	Carrier	1	See Carrier Assembly Details
18	See Axle Shaft	Axle Shaft Assembly	2	RH/LH
19	2297-Q-8779	Thrust Button	2	
20	1225-H-1516	King Pin Bushing	4	
21	See Wheel End	Knuckle	2	
22	A-1205-M-2795	King Pin Seal	4	
23	See Wheel End	Spindle	2	
24	See Brake Detail	Brake Assembly	2	16.5 x 6 Cast+™
25	See Wheel End	Wheel End (Planetary H2P Assembly)	2	
26	See Tie Rod Detail	Tie Rod Assembly	1	
27	A1-3133-V-9460	Steering Arm	1	LH
	A1-3133-W-9461		1	RH
28	See Tie Rod Detail	Castle Nut	2	
29	See Tie Rod Detail	Cotter Pin	2	
30	MS-22055-M2	Steering Arm-to-Knuckle Bolt	8	M20x2.5 - 55 mm

MXH2PW WHEEL END



4011829a

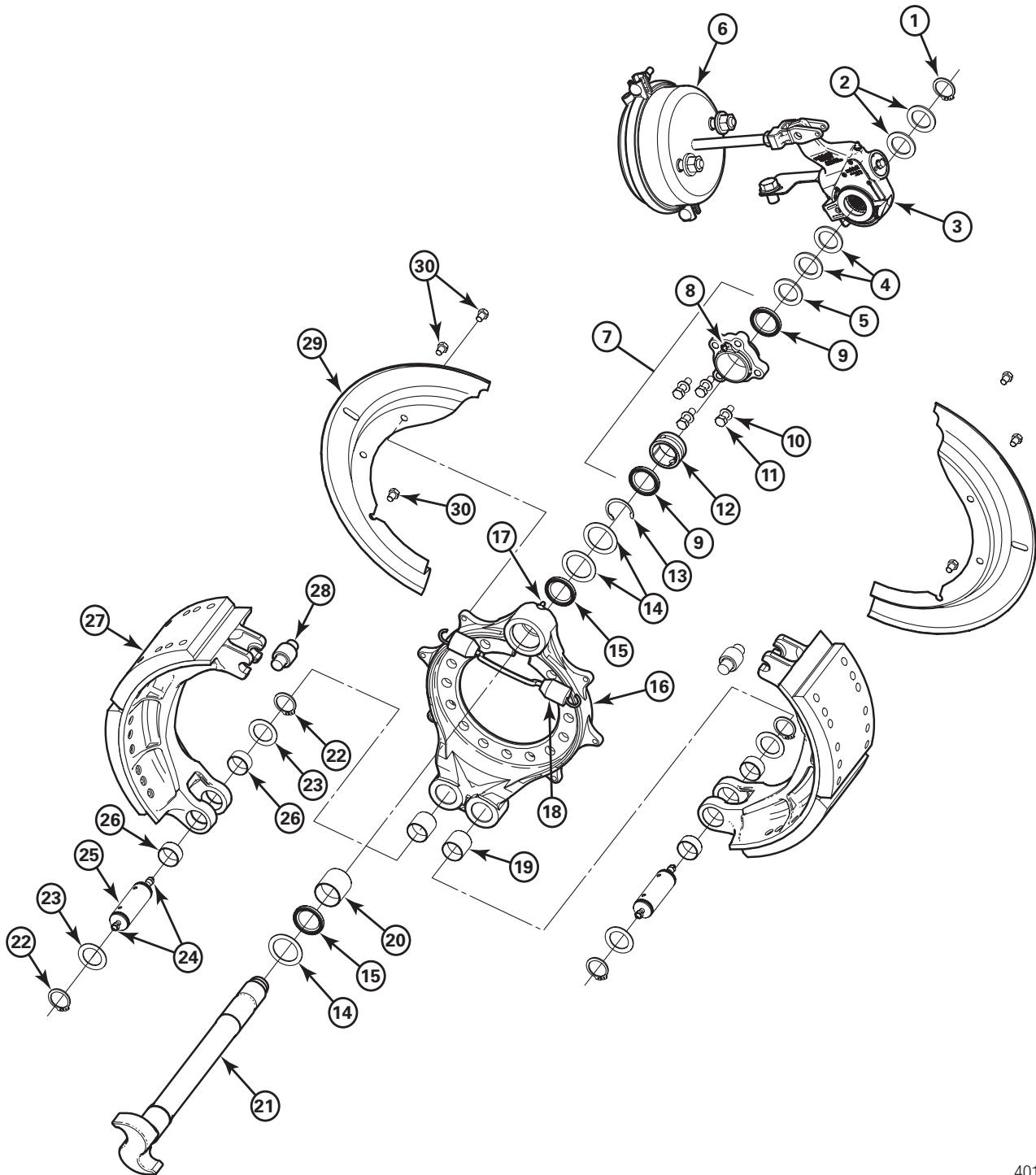
MXH2PW WHEEL END

ITEM	PART NUMBER	DESCRIPTION	QUANTITY (PER AXLE)	REMARKS
1	08205976	Wheel Nut	20	M22x1.5 mm
2	3219-C-6009	Drum Brake, 16.6 x 6"	2	
3	See Brake List	16.5 x 6" CP R301 S-Cam Brake	2	
4	A1-333-C-4761	Hub Assembly	2	Inc. #5 Tone Ring, #6 Wheel Stud
5	3237-D-1330	Tone Ring	2	
6	09001989	Wheel Stud	20	Serrated M22x1.5 RH Thread
7-8	A1-1228-B-1557	Wheel Tapered Roller Set Bearing		
7	1228-B-1796	Cup #Y32026	2	Outer Set
8	A-1228-B-1796	Cone #X32026		
9	982108	O-Ring (Planetary Cover)	2	248 mm I.D.
10	3204-R-1110	Hub Ring Gear	2	
11	1522392	Snap Ring (Ring Gear/Hub)	2	
12	1522380	Planetary Ring Gear	2	
13-20	KIT E816	Pinion (Planetary Assembly)	8	
13	914463	Snap Ring (Planetary Pinion Shaft)	8	Shaft to Cover
14	1522386	Shaft (Planetary Pinion)	8	
15	1522390	Thrust Washer (Planet Pinion Outer)	16	Brass
16	1522389	Thrust Washer (Planet Pinion Inner)	16	Steel
17	1522387	Roller Bearing (Planet Pinion Needle)	304	
18	1522388	Roller Spacer (Planet Pinion Needle)	8	
19	1522381	Pinion (Planetary)	8	
20	949721	O-Ring (Planetary Pinion Shaft)	8	3x26.2 mm
21	1227-S-1735	Wheel Bearing Nut	2	
22	1229-Z-5148	Thrust Washer (Sun Gear)	2	
23	A-1228-E-1799	Needle Bearing (Sun Gear Thrust)	2	
24	3892-A-5981	Sun Gear (Planetary)	2	
25	1229-M-5187	Retaining Washer	2	
26	1229-A-5149	Snap Ring (Sun Gear/Axle Shaft)	2	
27	3298-V-1244	Planetary Carrier	2	
28	40X-1016	Jam (Thrust Screw) Nut	2	
29	10X-1785	Thrust Screw	2	
30	981280	Oil Plug	2	Non Magnetic

MXH2PW WHEEL END

ITEM	PART NUMBER	DESCRIPTION	QUANTITY (PER AXLE)	REMARKS
31	981281	Oil Plug	2	Magnetic (Oil Plug Fill/Drain)
	949329	Sealing O-Ring	2	
32	959238	Planetary Carrier Bolt	2	Socket Head M10x1.5-25 mm
33-34	A1-1228-A-1795	Wheel Tapered Roller Set Bearing	2	Inner Set
33	1228-A-1795	Cup #JM822010		
34	A-1228-A-1795	Cone #JM822049		
35	A-1205-P-2798	Grease (Wheel Hub) Seal	2	
36	2245-J-1284	Bushing Sleeve (Spindle, Outer)	2	
37	MS-216050-A2	Spindle Fastener Bolt	28	
38	1229-W-1557	Hardened Washer	28	
39	A-3213-P-2356	Spindle	2	
40	1225-L-1442	Axle Shaft (In Spindle) Bushing	2	
41	A-1205-V-2648	Axle Shaft (In Spindle) Seal	2	
42	3111-M-4563	Knuckle	1	LH
	3111-N-4564		1	RH
43	2297-Q-8779	Thrust Button		

MXH2PW BRAKE ASSEMBLY



4011817a

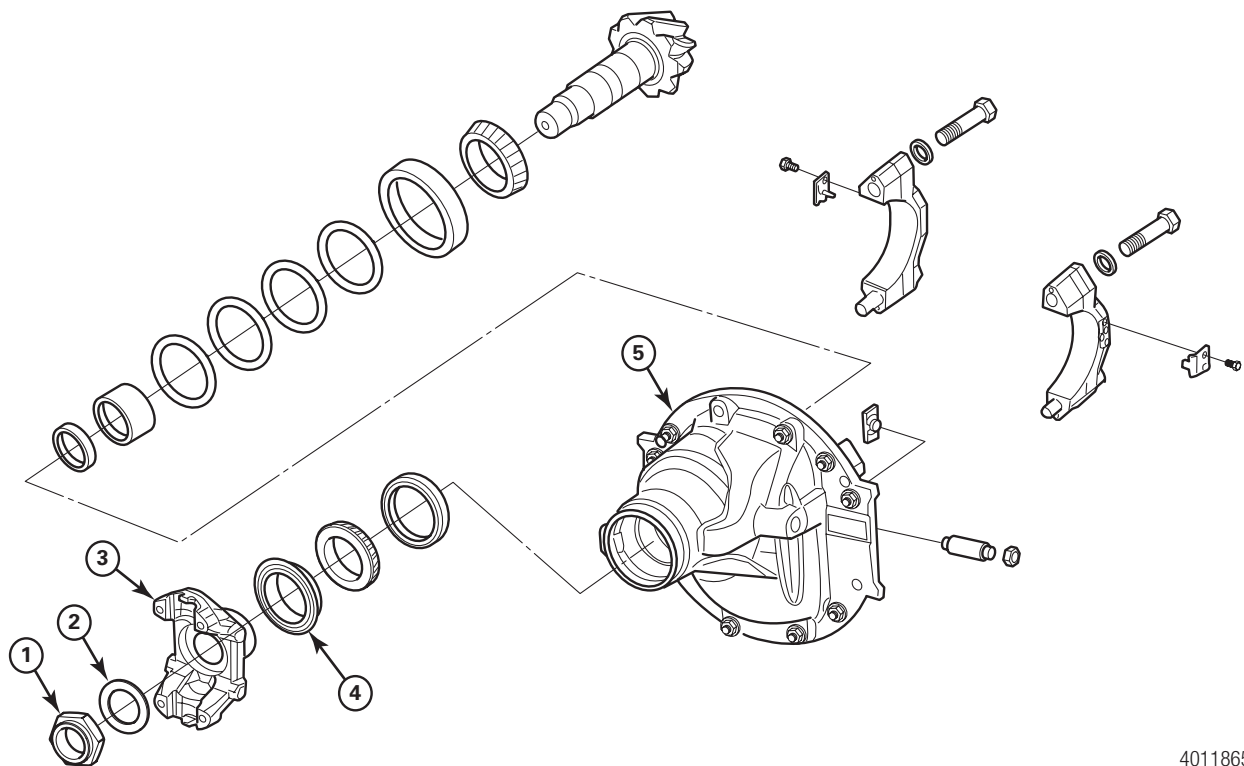
MXH2PW BRAKE ASSEMBLY

ITEM	PART NUMBER	DESCRIPTION	QUANTITY (PER AXLE)	REMARKS
1	1229-D-2942	Snap Ring (Slack Retainer)	2	
2	1229-W-3117	Washer (Slack, Outer)	4	0.120" Thick
3	A80-3275-S-1059	Slack Adjuster	1	LH
	A79-3275-S-1059			RH
	A-2297-G-9159	Adjuster Strap	1	LH
	A2297-H-9160	Adjuster Strap	1	RH
	41X-1718	Strap Attachment Bolt	2	M16x1.5-30 mm
	MWA-516	Washer	2	
4	1229-J-3130	Washer (Slack, Inner)	4	0.030" Thick
5	1229-H-4090	Washer (Slack, Inner)	2	0.104" Thick
6	E49-4376-D-30	Chamber Assembly	2	LH/RH
	N-310-1	Chamber-to-Bracket Nut	4	5/8-11"
	1229-N-1626	Chamber-to-Bracket Flat Washer	4	
	1245-F-1072	Clevis	2	
	19X-1084	Clevis Pin	2	
	K-248	Cotter Pin	2	
7	A1-3105-F-1332	Bearing Block Assembly	2	Inc. 8-12
8	A-2206-Q-1031	Zerk Grease Fitting	2	
9	1205-Q-2123	Bearing Block Seal	2	
10	MWA-510-1	Washer	8	M10
11	MS-210035-M2	Bearing Block Mounting Bolt	8	M10x35 mm
12	1225-N-1158	S-Cam (Bearing Block) Bushing	2	
13	1229-T-4102	Snap Ring (S-Cam Spider Washer)	2	
14	1229-X-3118	Washer (S-Cam Head End)	4	
15	1205-Q-2123	Grease Seal (S-Cam in Spider)	4	
16	3211-J-7602	Brake Spider Assembly	2	
17	1199-T-2854	Zerk Grease Fitting	2	1/4-28 x 0.516"
18	2258-Y-1273	Shoe Return Spring	2	
19	1225-B-496	Bushing (Shoe Anchor Pin)	4	
21	2210-A-8997	Brake Camshaft	1	LH
	2210-Z-8996	Brake Camshaft	1	RH
22	1229-D-2942	Snap Ring (Shoe Anchor Pin)	8	
23	1229-B-1848	Washer (Shoe Anchor Pin)	4	
24	1199-N-1860	Zerk Grease Fitting	4	45°
25	1229-K-1181	Shoe Anchor Pin	2	
26	1225-U-1581	Bushing (Pin Anchor)	4	

MXH2PW BRAKE ASSEMBLY

ITEM	PART NUMBER	DESCRIPTION	QUANTITY (PER AXLE)	REMARKS
27	A11-3222-H-2296 A-3222-H-2296	Shoe and Lining Assembly 16.5 x 6 CP R301 Shoe Table Less Lining	4	Inc Bushing
28	2297-Q-8233	Roller (Shoe Cam End)	4	
29	3264-P-1290	Dust Shield	2	LH Front, RH Rear
	3264-Q-1291	Dust Shield	2	RH Front, LH Rear
30	S-264-B	Shield Attachment Bolt	6	3/8-16 x 0.50"

MXH2PW CARRIER ASSEMBLY



4011865a

ITEM	PART NUMBER	DESCRIPTION	QUANTITY (PER AXLE)	REMARKS
1	40X-1237	Yoke Nut	1	KIT-2637
2	1229-T-1736	Yoke Washer	1	KIT-2637
3	17TYS32-99A	Yoke	1	inc DEFR59-1 Deflector
4	R945009	Seal-Lube	1	
5	xx-3200H2270-xx	Carrier Assembly	1	See BOM

KITS

KING PINS, BUSHINGS AND CAPS

AXLE	PART NUMBER	DESCRIPTION	QUANTITY (PER AXLE)
H2P Specification	3101-Y-1091	King Pin (Top and Bottom)	4
	43-X-1266	Roll Pin	4
	1225-H-1516	King Pin Bushing	4
	1229-X-5146	Thrust Washer	2
	A-1205-M-2795	Seal	4

AXLE SHAFT ASSEMBLY

AXLE	PART NUMBER	DESCRIPTION	QUANTITY (PER AXLE)
H2P Specification	A-3302-W-1297	Axle Shaft - LH	1
	A-3302-V-1296	Axle Shaft - RH	1

TIE ROD ASSEMBLY

AXLE	PART NUMBER	DESCRIPTION	QUANTITY (PER AXLE)
H2P Specification	A-3102-T-4726	Tie Rod Assembly with Nuts	1
	3144-V-1192	Tie Rod End – LH	1
	3144-W-1193	Tie Rod End – RH	1
	3102-T-4726	Tube and Clamps Only	1
	K-2440	Cotter Pin	2
	1227-E-1799	Castle Nut (7/8-14") UNF	2

BRAKE RELINE KIT

AXLE	PART NUMBER	DESCRIPTION	QUANTITY (PER AXLE)
16-1/2" X 6"	A11-3222-H-2296	Shoe and Lining	4
	2258-Y-1273	Shoe Return Spring	2
	2297-Q-8233	Shoe Roller	4

BRAKE SERVICE KIT

AXLE	PART NUMBER	DESCRIPTION	QUANTITY (PER AXLE)
16-1/2" X 6"	1259-K-1181	Shoe Anchor Pin	4
	1225-B-496	In Spider Bushing	8
	1229-B-1848	Pin Washer	8
	1229-D-2942	Snap Ring	8
	1199-N-1860	Zerk Grease Fitting	8

MERITOR AFTERMARKET PARTS WARRANTY

We warrant all new parts for one year from date of shipment to the buyer against defective material or workmanship (but not against damage caused by accident, abuse or improper installation, maintenance or repair) when such parts are used on vehicles the specifications of which have been approved by our Engineering Department.

As the exclusive remedy under this warranty, we will, at our option, repair or replace such parts free of charge, or take back the nonconforming parts and refund the monies paid by buyer for such parts, if found on examination by us to be nonconforming and if any necessary return charges are prepaid.

If it is necessary to return any parts under this warranty, buyer agrees not to make any deduction on account thereof from remittances on current accounts while claims are in the process of disposition. Any expense incurred without our consent for repairs or replacement will not be allowed.

THIS WARRANTY IS EXPRESSLY IN LIEU OF ALL OTHER WARRANTIES OR CONDITIONS, EXPRESS, IMPLIED OR STATUTORY, INCLUDING ANY IMPLIED WARRANTY OF MERCHANTABILITY OR FITNESS FOR PARTICULAR PURPOSE. IN NO EVENT SHALL SELLER BE LIABLE FOR INCIDENTAL OR CONSEQUENTIAL DAMAGES OF ANY NATURE.

Only genuine Meritor replacement parts are covered by this aftermarket parts warranty.

Information contained in this publication is in effect at the time the publication was approved for printing and is subject to change without notice or liability. Meritor Heavy Vehicle Systems, LLC, reserves the right to revise the information presented or discontinue the production of parts described at any time



Meritor Heavy Vehicle Systems, LLC
7975 Dixie Highway
Florence, Kentucky 41042 USA

Call 1-888-725-9355
or visit meritor.com

©2022 Meritor, Inc.
Litho in USA, PB-1572
Revised 02-22 (16579)