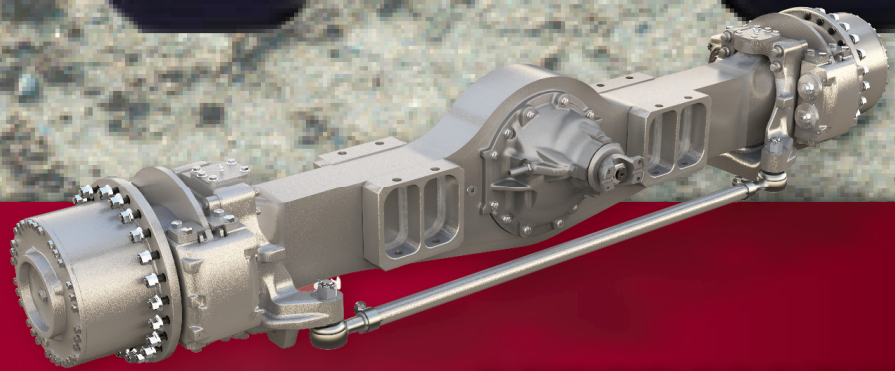


MERITOR® OFF-HIGHWAY AXLE MOXN5



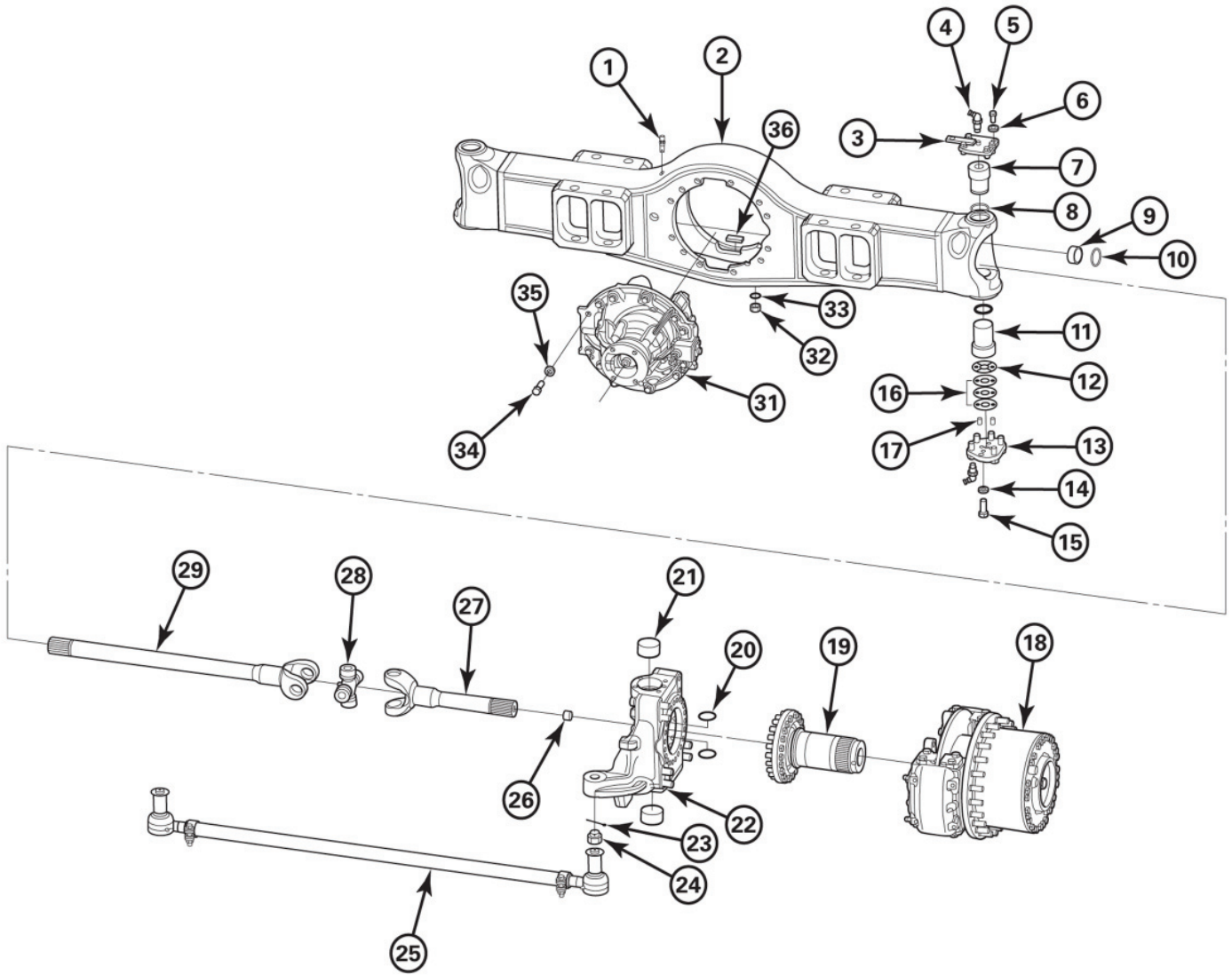
**AFTERMARKET
OFF-HIGHWAY
MOXN5H024WS4003-2507**



MERITOR

PB-1266

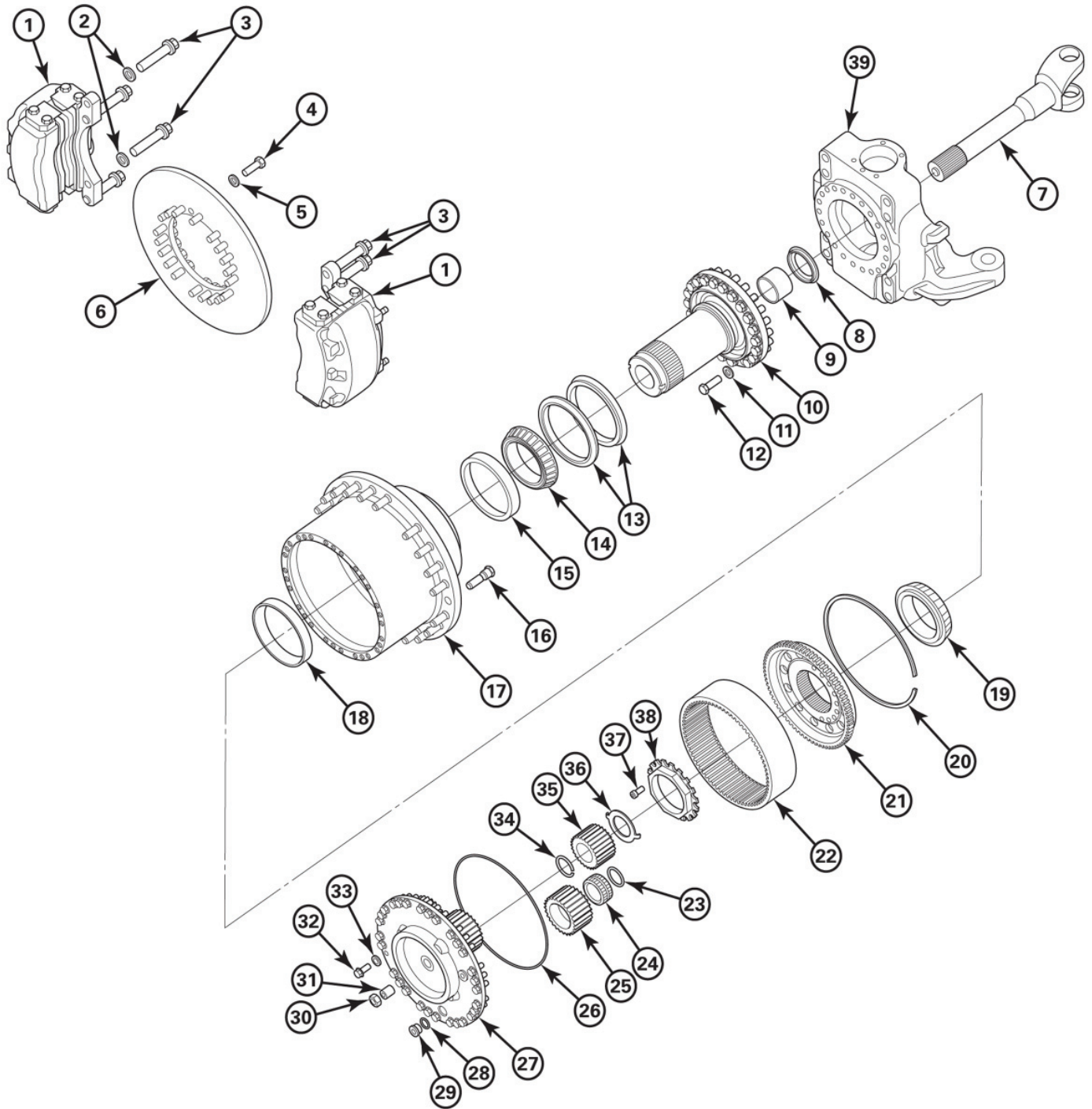
AXLE EXPLODED VIEW



AXLE ASSEMBLY COMPONENTS

ITEM	PART NUMBER	QTY (PER AXLE)	DESCRIPTION	REMARKS
1	A-1199-W-4053	1	Breather	
2	A2-3801-M-1703	1	Axle Housing	
3	2297-Y-8787	As Needed	Cap (Top King Pin)	
4	1199-B-3226	4	Fitting - Grease	Angled
5	MS-212035-A2	10	Bolt (King Pin Cap / Top)	M12x1.75 x 35, Hex
6	1229-D-4632	10	Washer (King Pin Cap / Top)	M12
7	3101-B-1094	2	King Pin (Top)	
8	5-X-1394	4	O-Ring (King Pin)	
9	1225-L-1442	4	Bushing (Axle Shaft)	
10	A-1205-U-2647	2	Seal - Radial (Axle Shaft / Housing)	
11	3101-A-1093	2	King Pin (Bottom)	
12	42-X-1516	2	Thrust Washer (King Pin)	
13	2297-X-8786	2	Cap (Bottom King Pin)	
14	1229-W-1557	12	Washer (King Pin Cap / Bottom)	M16
15	MS-216045-A2	12	Bolt (King Pin Cap / Bottom)	M16x2 x 45, Hex
16	Shim			
	2803-Y-3847	As Needed	Shim (1.00 mm)	
	2803-A-3849	As Needed	Shim (0.50 mm)	
	2803-L-3860	As Needed	Shim (0.25 mm)	
17	43-X-1265	4	Pin - Spirol	
18	See Wheel End	2	Wheel End Assembly	
19	3213-G-2243	2	Spindle	
20	A-1205-U-2803	4	Seal (King Pin)	
21	1225-P-1524	4	Bushing - King Pin	
22	See Wheel End	2	Knuckle	
23	K-2820	2	Pin - Cotter (Tie Rod Nut)	Ø0.25 x 2.5"
24	1227-M-1001	2	Nut - Castle (Tie Rod End)	
25	A-3102-L-4666	1	Tie Rod, Assy	With Nut
26	2297-Q-8779	2	Thrust Button	
27-29	Axle Shaft			
	A-3302-W-1011	2	Axle Shaft - Long	
	A-3302-S-1007	2	Axle Shaft - Short	
28	CP850N-4	2	U-Joint Replacement Kit	
31	A-3200-K-2351-557	1	Carrier - Non Lockout	
32	981281	2	Plug - Magnetic, Oil	
33	949329	2	Ring - Seal (Oil Fill & Drain Plug)	
34	MS-216050-N2	8	Bolt (Carrier / Axle Hsg)	M16x2 x 50, hex
34	MS-216070-N2	4	Bolt (Carrier / Axle Hsg)	M16x2 x 70, hex
35	1229-W-1557	12	Washer (Carrier / Axle Hsg)	M16
36	2297-K-6771	6	Magnet - Housing	

WHEEL END VIEW

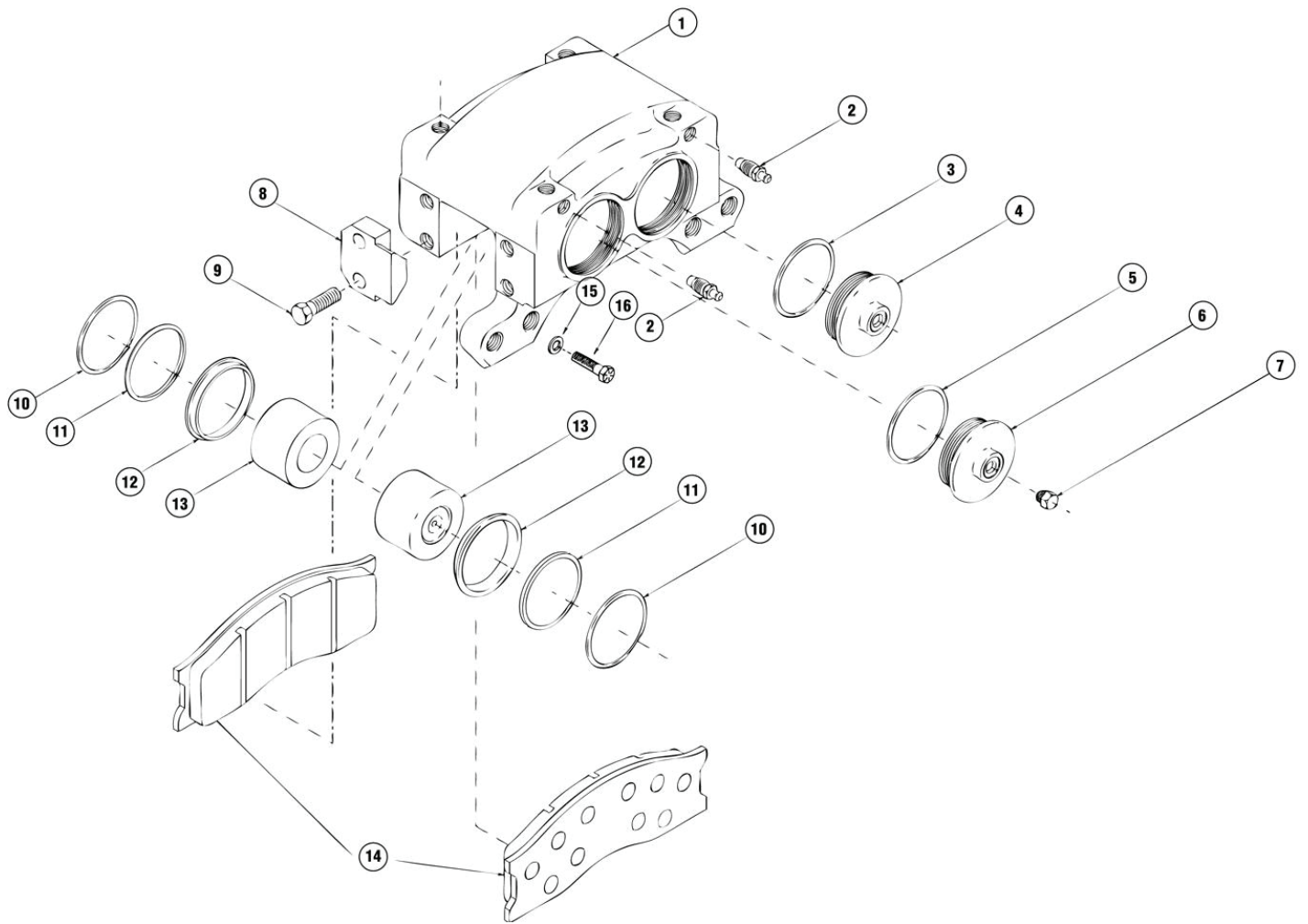


WHEEL END COMPONENTS

ITEM	PART NUMBER	QTY (PER AXLE)	DESCRIPTION	REMARKS
1	A-3236-L-2742	4	Caliper - Brake, Assy	
2	1229-Z-1560	16	Washer	7/8"
3	Bolt			
	SP-2039	8	Bolt (Brake Caliper / Knuckle)	Upper. 7/8-9 UNC x 5", 12 point
	SP-2038	8	Bolt (Brake Caliper / Knuckle)	Lower. 7/8-9 UNC x 4", 12 point
4	MS-216050-A2	40	Bolt (Brake Disc / Wheel Hub)	M16 x 2 x 50, Hex
5	1229-W-1557	40	Washer	M16
6	3218-D-1512	2	Disc - Brake (Rotor)	
7	A-3302-W-1011	2	Axle Shaft Assembly - Long	
7	A-3302-S-1007	2	Axle Shaft Assembly - Short	
8	A-1205-V-2648	2	Seal - Radial (Spindle)	
9	1225-L-1442	4	Bushing (Axle Shaft)	
10	3213-G-2243	2	Spindle	
11	1229-W-1557	44	Washer	M16
12	MS-216050-A2	44	Bolt (Spindle / Knuckle)	M16 x 2 x 50, Hex
13	A-1205-W-2805	2	Seal - Oil, Metal Face	
14, 15, 18, 19	A1-1228-R-1838	2 sets	Bearing - Wheel (Inner & Outer)	120 x 180 x 38
16	20-X-2572	46	Stud - Wheel	0.75"-UNF
17	333-H-4610	2	Hub - Wheel	
20	1229-C-5177	2	Snap Ring (Ring Gear / Hub)	
21	3204-F-1098	2	Hub - Ring Gear Planetary	
22	3892-P-5970	2	Ring Gear - Planetary	
23	1229-B-5176	8	Snap Ring (Pinion Bearing / Carrier)	
24	A-1228-K-1831	8	Bearing - Cylindrical Roller	50 x 72 x 37
25	3891-A-1977	8	Pinion - Planetary	
26	5-X-1396	2	O-Ring (Planet Carrier / Wheel Hub)	2.6 x 310
27	3298-M-1235	2	Carrier - Planetary	
28	949329	4	Ring - Seal (Oil Fill & Drain Plug)	
29	981280	4	Plug, Oil	
30	40-X-1016	2	Nut - Jam (Sun Gear Thrust Screw)	
31	10-X-1785	2	Screw - Thrust (Sun Gear Outboard)	
32	MS-212035-A2	60	Bolt (Planetary Carrier / Hub)	M12 x 1.75 x 35, Hex
33	1229-D-4632	60	Washer	M12
34	1229-K-5185	2	Snap Ring (Sun Gear / Axle Shaft)	
35	3892-K-5965	2	Sun Gear - Planetary	
36	1229-E-5179	2	Thrustwasher (Sun Gear)	
37	959238	2	Bolt (Spindle Nut Lock)	M10 x 1.5 x 25, Allen
38	1227-N-1730	2	Nut - Spindle	
39	Knucle			
	3111-R-4282	1	Knuckle	LH
	3111-S-4283	1	Knuckle	RH

WHEEL END

BRAKE CALIPER VIEW



BRAKE CALIPER ASSEMBLY COMPONENTS

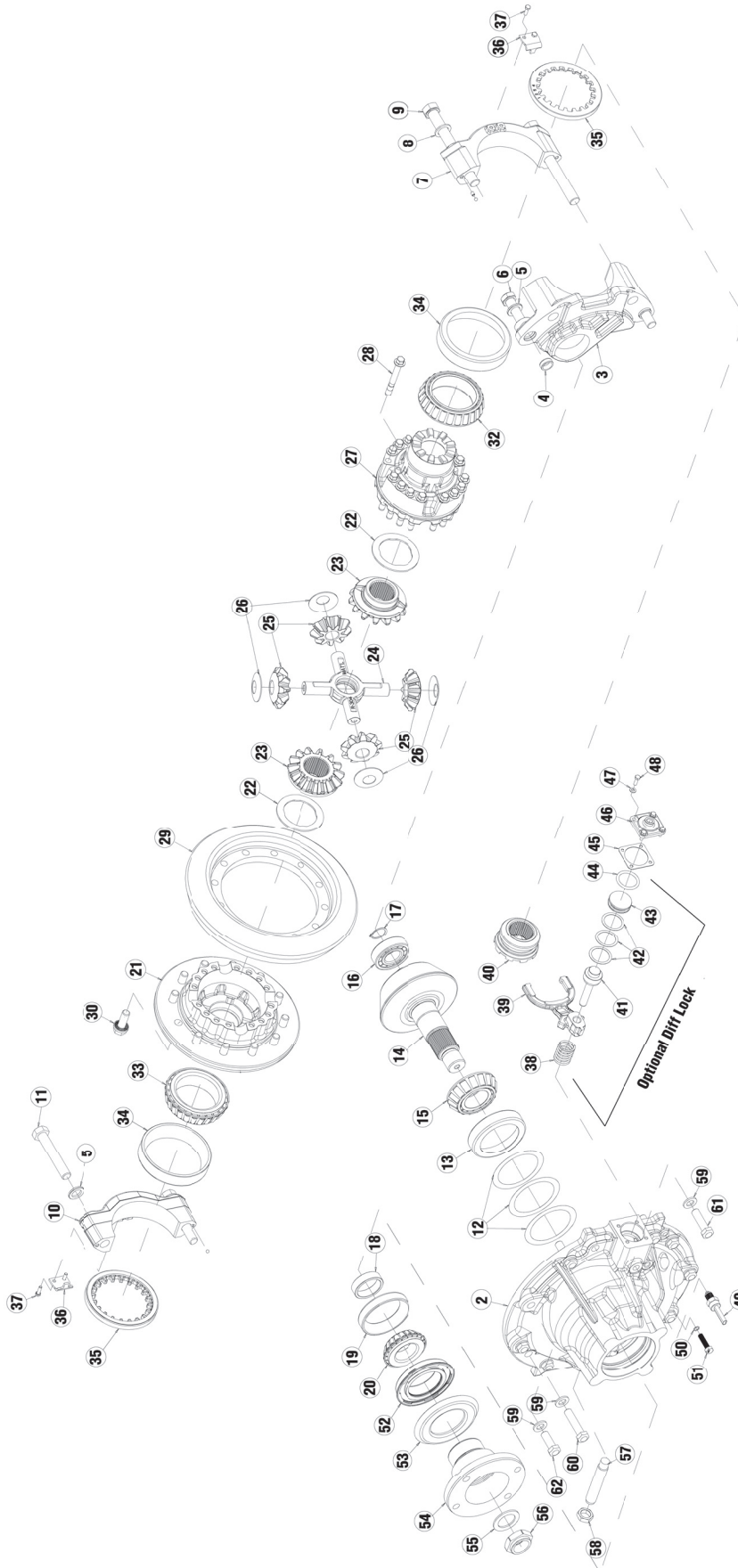
ITEM	ORIGINAL	ALL MAKES	QTY (PER AXLE)	DESCRIPTION
1	3267R1474		1	Housing
2	9680401	M4070002	2	Bleeder Screw
3	9680381	M4060017	2	Seal O-Ring
4	9640105		2	Cap Head
5	9680381	M4060017	2	Seal O-Ring
6	9640105		2	Cap Head
7	9680073		1	Plug
8	2205E1019		4	Plate Lining Retaining
9	521012ZB2		8	Bolt/Capscrew
10	9630159	M4060015	4	Seal – O-Ring
11	9630173	M4060016	4	Ring – Backup
12	1205A2263	M4060014	4	Wiper Piston
13	9640138	M4050004	4	Piston
14	A2 3222X2104	M4020002	2	Brake Pad Assy
15	1229-Z-1560		16	Washer, Hardened
16	Caliper Bolt			
	SP-2039		8	Caliper Bolt - Upper
	SP-2038		8	Caliper Bolt - Lower

**BRAKE
CALIPER**

Caliper Service Kit

ITEM	ORIGINAL	ALL MAKES	QTY (PER AXLE)	DESCRIPTION
	MPS3716	M4010008	As Needed	Caliper Service Kit
	• 1205A2263	• M4060014	4	Wiper Piston
	• 9630159	• M4060015	4	Seal – O-Ring
	• 9630173	• M4060016	4	Ring – Backup
	• 9680381	• M4050004	4	Piston

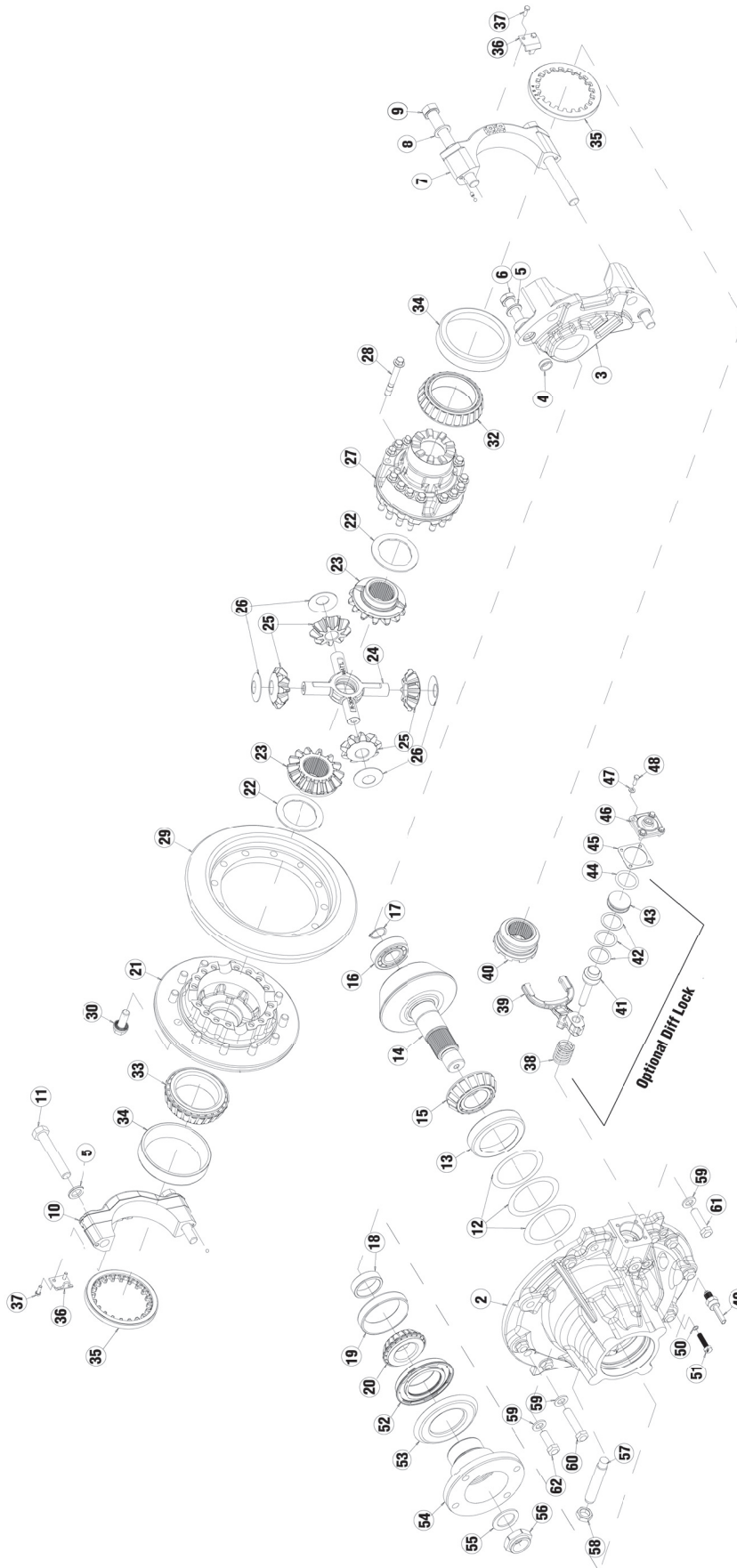
CARRIER ASSEMBLY



CARRIER ASSEMBLY COMPONENTS

ITEM	PART NUMBER	QTY (PER AXLE)	DESCRIPTION	COMMENTS
2-11	A2-3200-K-2351	1	Carrier – Diff. Fin.	
3	A-3212-W-1375	1	Leg-Cap, Assy – Bottom Half	in A23200K2351
4	1225-T-1528	2	Dowel – Hollow	in A23200K2351
5	42-X-1021	4	Washer	in A23200K2351
6	41-X-1739	2	Capscrew – Short	in A23200K2351
7	A-3212-E-1409	1	Leg Cap Assy (Plain Half Side)	in A23200K2351
8	42-X-1024	2	Washer	in A23200K2351
9	41-X-1740	2	Capscrew – Long	in A23200K2351
10	A-3212-F-1358	1	Leg Cap Assy (Flange Half Side)	in A23200K2351
11	M-220120-1	2	Capscrew	in A23200K2351
12	Shim			
	2803-A-3823	As Needed	Shim	
	2803-B-3824	As Needed	Shim	
	2803-C-3825	As Needed	Shim	
13	72487	1	Cup Bearing	
14 & 29	A-41304-1R-557	1	Gear Set	
15	72212C	1	Cone Bearing	
16	1228-F-552	1	Bearing Roller	
17	46-X-1084	1	Snap-Ring	
18	KIT 2322	1	Spacer	
19	55437	1	Cup – Bearing	
20	55206C	1	Cone – Bearing	
21	3235-G-2789	1	Case Diff Flange Half, Fin.	
22	1229-Q-5087	2	Washer – Thrust	
23	2234-G-1437	2	Gear, Diff Side, Fin.	
24	3278-S-305	1	Spider – Diff Fin.	
25	2233-J-1024	4	Pinion – Diff Fin.	
26	1229-R-1032	4	Washer – Thrust	
27	3235-W-2935	1	Case Diff, Plain Half, Fin.	
28	41-X-1756	16	Screw – Special	
30	41-X-1216	12	Screw – Special	
31	1229-U-1503	12	Washer	
32	40-X-1182	12	Nut	
33	594A	2	Cone – Bearing	
34	592A	2	Cup – Bearing	
35	2214-G-1255	2	Ring – Brg. Adj. Fin.	
36	1220-P-1108	2	Tab – Locking	
37	41-X-1669	4	Screw – Special	
38	2258-N-1262	1	Spring	
39	3296-A-1405	1	Fork – Shif, Fin.	
40	3107-U-1321	1	Collar Fin.	

CARRIER ASSEMBLY



CARRIER ASSEMBLY COMPONENTS (continued)

ITEM	PART NUMBER	QTY (PER AXLE)	DESCRIPTION	COMMENTS
41	2244-N-1236	1	Rod – Push, Diff Lock Out	
42	2803-A-3641	As Needed	Shim	
43	2230-Y-1377	1	Piston	
44	5-X-888	1	Ring-O	
45	2208-Q-1005	1	Gasket	
46	3266-S-1033	1	Cover, Fin.	
47	MWA 506	4	Washer – Flat	
48	41-X-1669	4	Screw – Special	
50	5-X-521	1	Ring – O	
51	41-X-1742	1	Caging Bolt	
52	A-1205-N-2588	1	Seal Assy	
53	DEFR50-34	1	Deflector	
54	72NYS32-244	1	Flange – Companion, Fin.	
55	1229-T-1736	1	Washer – Flat	
56	40-X-1237	1	Nut – Lock, Fin.	
57	41-X-1371	1	Screw – Thrust	
58	40-X-1016	1	Nut – Jam	

CARRIER
ASSEMBLY

KING PINS, BUSHINGS AND CAPS

AXLE	PART NUMBER	QTY (PER AXLE)	DESCRIPTION
N5/P8 Specification	3101-B-1094	2	King Pin (Top)
	3101-A-1093	2	King Pin (Bottom)
	43-X-1265	4	Roll Pin
	1225-P-1524	4	Bushing - King Pin
	42-X-1516	2	Thrustwasher
	2803-Y-3847	As Needed	Shim - 1.00 mm
	2803-A-3849	As Needed	Shim - 0.50 mm
	2803-L-3860	As Needed	Shim - 0.25 mm
	5-X-1394	4	O-Ring
	A-1205-U-2803	4	Seal

AXLE SHAFT ASSEMBLIES

AXLE	PART NUMBER	QTY (PER AXLE)	DESCRIPTION
N5 Specification	A-3302-W-1011	1	Axle Shaft Assembly - Long
	A-3302-S-1007	1	Axle Shaft Assembly - Short
	CP850N-4	1	U-joint

TIE ROD ASSEMBLIES

AXLE	PART NUMBER	QTY (PER AXLE)	DESCRIPTION
N5 Specification	A-3102-L-4666	1	Tie Rod Assembly
	1227-M-1001	2	Castle Nut
	3144-K-1181	1	Tie Rod End - Right
	3144-J-1180	1	Tie Rod End - Left
	K-2820	2	Cotter Pin
	3102-K-4691	1	Tube and Clamps Only

CARRIER YOKES AND FLANGES

AXLE	PART NUMBER	QTY (PER AXLE)	DESCRIPTION
H2/N5 Specification	72NYS32-244	1	Yoke
P8 Specification	85WBYS32-20	1	Yoke
All Specs with Park Brake	72NYSB32-343	1	Flange Yoke
P8 with Park Brake	3260-B-2030	1	Flange Adapter

MOXN5 — BOM

PART NUMBER	DESCRIPTION	QTY	CHART	ITEM #
A2 3801M1703	HSG ASSY-AXLE,MACHINE	1	Axle	2
A1 3801M1703	HSG ASSY-W/BRACKETS	1		
A 3801M1703	HSG ASSY-WELDED,COMPLETE	1		
3305E2657	PLATE,FIN.	1		
3305K2663	PLATE,FIN.	1		
3305G2659	PLATE,FIN.	2		
3305F2658	PLATE,FIN.	1		
3305H2660	PLATE,FIN.	2		
3305J2662	PLATE,FIN.	1		
3214W1141	SOCKET-TRUNNION,FIN.	2		
3305U2777	PLATE,FIN.	4		
3150Q3761	BRACKET	4		
3305N3082	PLATE,FIN.	1		
2297K6771	MAGNET-HSG	6	Axle	36
A 1199W4053	BREATHER	1	Axle	1
P 26	PLUG	1		
981281	OIL FILLER PLUG-MAGNETIC	4	Axle	32
949329	GASKET	6	Axle/Wheel End	33, 28
3111R4282	KNUCKLE-STEERING,FIN.	1	Wheel End	39
3111S4283	KNUCKLE-STEERING,FIN.	1	Wheel End	39
1225P1524	BUSHING	4	Axle	21
42X1516	WASHER-THRUST	2	Axle	12
5X1394	RING-O	4	Axle	8
43X1265	PIN-SPIROL	4	Axle	17
1199B3226	FITTING-GREASE	4	Axle	4
1199N1860	LUBE FITTING	2		
3101A1093	PIN-KNUCKLE	2	Axle	11
3101B1094	PIN-KNUCKLE	2	Axle	7
2803Y3847	SHIM	0	Axle	16
2803A3849	SHIM	0	Axle	16
2803L3860	SHIM	0	Axle	16
2297X8786	CAP-KING PIN	2	Axle	13
MS216045A 2	BOLT/CAPSCREW	12	Axle	15
MS216050A 2	CAPSCREW METRIC	80	Wheel End	4, 12
MS216050N 2	BOLT/CAPSCREW	4	Axle	34
MS216070N 2	BOLT/CAPSCREW	8	Axle	34
1229W1557	WASHER-HARDENED	108	Axle/Wheel End	14,35 -5,11
2297Y8787	CAP-KING PIN	2	Axle	3
MS212035A 2	CAPSCREW	70	Axle/Wheel End	5, 32
1229D4632	WASHER	70	Axle/Wheel End	6, 33
A 1205U2803	SEAL ASSY	4	Axle	20
A 3302S1007	JOINT-SINGLE	1	Axle/Wheel End	27-29 - 7
A 3302W1011	JOINT-SINGLE	1	Axle	27-29
2297Q8779	ROLLER	2	Axle	26
A 1205U2647	SEAL ASSY-OIL	2	Axle	10
A 1205V2648	SEAL ASSY-OIL	2	Axle	8

MOXH2-BOM

MOXN5 — BOM (continued)

PART NUMBER	DESCRIPTION	QTY	CHART	ITEM #
1225L1442	BUSHING ASSY-AXLE SHAFT	4	Axle/Wheel End	9,9
A 3102L4666	ROD ASSY-TIE	1	Axle	25
1227M1001	NUT-WHEEL STUD	2	Axle	24
K 2820	COTTER	2	Axle	23
3892P5970	GEAR-PLANETARY RING,FIN.	2	Wheel End	22
3204F1098	HUB-PLANETARY RING GEAR,FIN.	2	Wheel End	21
1229C5177	RING-SNAP	2	Wheel End	20
3298M1235	CARR-PLANETARY PINION,FIN.	2	Wheel End	27
5X1396	RING-O	2	Wheel End	26
3891A1977	PINION-PLANETARY,FIN.	8	Wheel End	25
A 1228K1831	BEARING ASSY	8	Wheel End	24
1229B5176	RING-SNAP	8	Wheel End	23
3892K5965	GEAR-PLANETARY SUN,FIN.	2	Wheel End	35
1229E5179	WASHER-THRUST	2	Wheel End	36
10X1785	SCREW-THRUST	2	Wheel End	31
40X1016	NUT-JAM	2	Wheel End	30
981280	OIL FILLER PLUG-NON-MAGNETIC	2	Wheel End	29
1229K5185	RING-SNAP	2	Wheel End	34
A-3236L2742	BRAKE ASSY-DISC	4	Wheel End	1
SP2038	SCREW-12 PT FLG,(FERRY HEAD)	8	Wheel End	3
SP2039	SCREW-12 PT FLG,(FERRY HEAD)	8	Wheel End	3
1229Z1560	WASHER-FLAT	16	Wheel End	2
3218D1512	ROTOR-DISC BRAKE,FIN.	2	Wheel End	6
3213G2243	SPINDLE,FIN.	2	Wheel End	10
333H4610	HUB,FIN.	2	Wheel End	17
20X2572	STUD-WHEEL	46	Wheel End	16
A1 1228R1838	BEARING TAPERED ASSY	4	Wheel End	14,15, 18,19
1227N1730	NUT-WHEEL BRG,FIN.	2	Wheel End	38
959238	SCREW	2	Wheel End	37
A 1205W2805	SEAL ASSY	2	Wheel End	12
1199H112	NUT-WHEEL STUD,OUTER,RH	46		
A-3200K2351-557	CARR ASSY-DIFF,NON LOCKOUT	1	Axle	31

CARRIER — BOM

PART NUMBER	DESCRIPTION	QTY	CHART	ITEM #
A2 3200K2351	CARR-DIFF, & CAP ASSY	1	Carrier	2
2803A3823	SHIM	0	Carrier	12
2803B3824	SHIM	0	Carrier	12
2803C3825	SHIM	0	Carrier	12
592A	CUP-BEARING	2	Carrier	34
2214G1255	RING-BRG ADJ,FIN.	2	Carrier	35
1220P1108	LOCK	2	Carrier	36
41X1669	SCREW-SPECIAL	4	Carrier	37
41X1371	THRUST SCREW	1	Carrier	57
40X1016	NUT-JAM	1	Carrier	58
72487	CUP-BEARING	1	Carrier	13
72212C	CONE-BEARING	1	Carrier	15
KIT 2322	KIT-SPACER	0	Carrier	18
2203J9474	SPACER-.345	2		
2203K9475	SPACER-.346	2		
2203L9476	SPACER-.347	2		
2203M9477	SPACER-.348	2		
2203N9478	SPACER-.349	2		
2203P9480	SPACER-.354	2		
2203Q9481	SPACER-.358	2		
2203R9482	SPACER-.359	2		
2203S9483	SPACER-.360	2		
2203T9484	SPACER-.361	2		
2203U9485	SPACER-.362	2		
55437	CUP-BEARING	1	Carrier	19
55206C	CONE-BEARING	1	Carrier	20
A 1205N2588	AY-OIL SEAL	1	Carrier	52
A-41304-1R-557	GEAR ASSY-BEVEL	1	Carrier	14&29
KIT 2637	HDWR KIT	1		
1229T1736	WASHER	1	Carrier	55
40X1237	NUT	1	Carrier	56
1228F552	BEARING-ROLLER	1	Carrier	16
46X1084	RING-LOCK	1	Carrier	17
41X1216	BOLT/CAPSCREW	12	Carrier	30
1229U1503	WASHER-FLAT	12	Carrier	31
40X1182	NUT-LOCK,FIN.	12	Carrier	32
3235G2789	CASE-DIFF,FLANGE HALF,FIN.	1	Carrier	21
2234G1437	GEAR-DIFF SIDE,FIN.	2	Carrier	23
1229Q5087	WASHER-THRUST	2	Carrier	22
3278S305	DIFF SPIDER	1	Carrier	24
2233J1024	DIFF PINION	4	Carrier	25
1229R1032	WASHER-THRUST	4	Carrier	26
3235W2935	CASE-DIFF,PLAIN HALF,FIN.	1	Carrier	27
41X1756	BOLT/CAPSCREW	16	Carrier	28
594A	CONE-BEARING	2	Carrier	33

CARRIER
BOM

CARRIER — BOM (continued)

PART NUMBER	DESCRIPTION	QTY	CHART	ITEM #
KIT 4812 I	KIT	1		
2208Q1005	GASKET	1	Carrier	45
3266S1033	CYLINDER HOLE COVER	1	Carrier	46
MWA 506	WASHER	4	Carrier	47
41X1669	SCREW-SPECIAL	4	Carrier	48
41X1742	SCREW-SPECIAL	1	Carrier	51
41X1368	CAGING BOLT	1		
5X521	O-RING	1	Carrier	50
41X1022	CAPSCREW	1		
1229U1503	WASHER-FLAT	1		
72NYS32-244A3I	YOKE & DEFLECTOR ASSY	1		
72NYS32-244	YOKE-SPLINE	1	Carrier	54
DEFR50-34	DEFLECTOR	1	Carrier	53

Shop XpresswayPlus.com for Off-Highway Parts



- 🖱 Place your order
- 🖱 Check Price and Availability
- 🖱 Retrieve Invoices
- 🖱 and more!



MERITOR[®]

Meritor Heavy Vehicle Systems, LLC
7975 Dixie Highway
Florence, KY 41042 USA

For more information:

U.S. 888-725-9355

Canada 800-387-3889

XpresswayPlus.com

meritor.com

Vehicle models, brands and names depicted herein are the property of their respective owners, and are not in any way associated with Meritor, Inc., or its affiliates.

Litho in USA Issued 03-12
PB-1266 (47865/CVA)
©2012 Meritor, Inc.