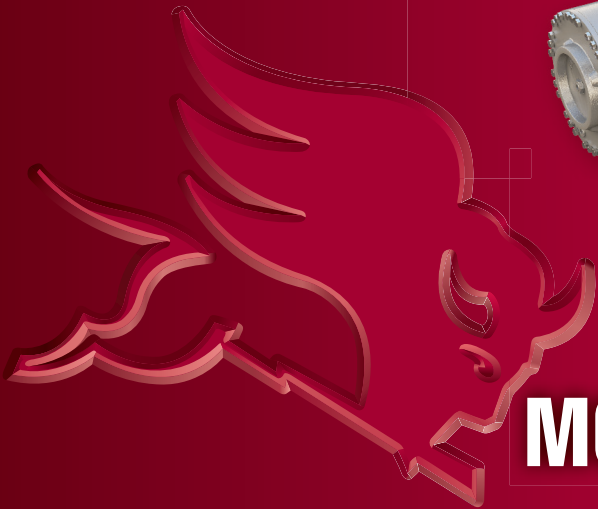
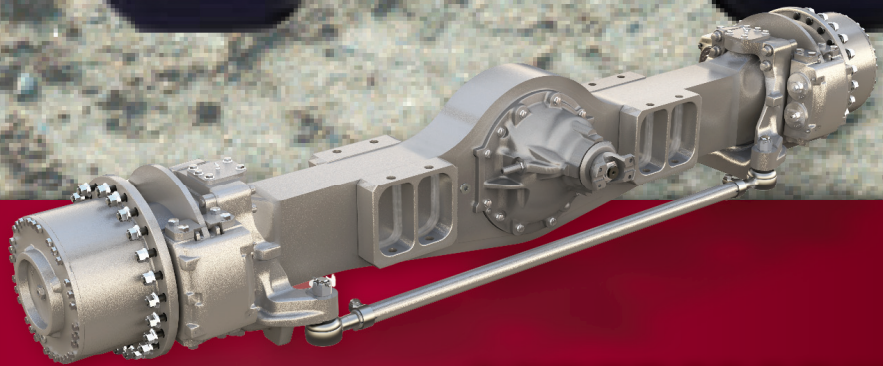


# MERITOR® OFF-HIGHWAY AXLE MOXH2



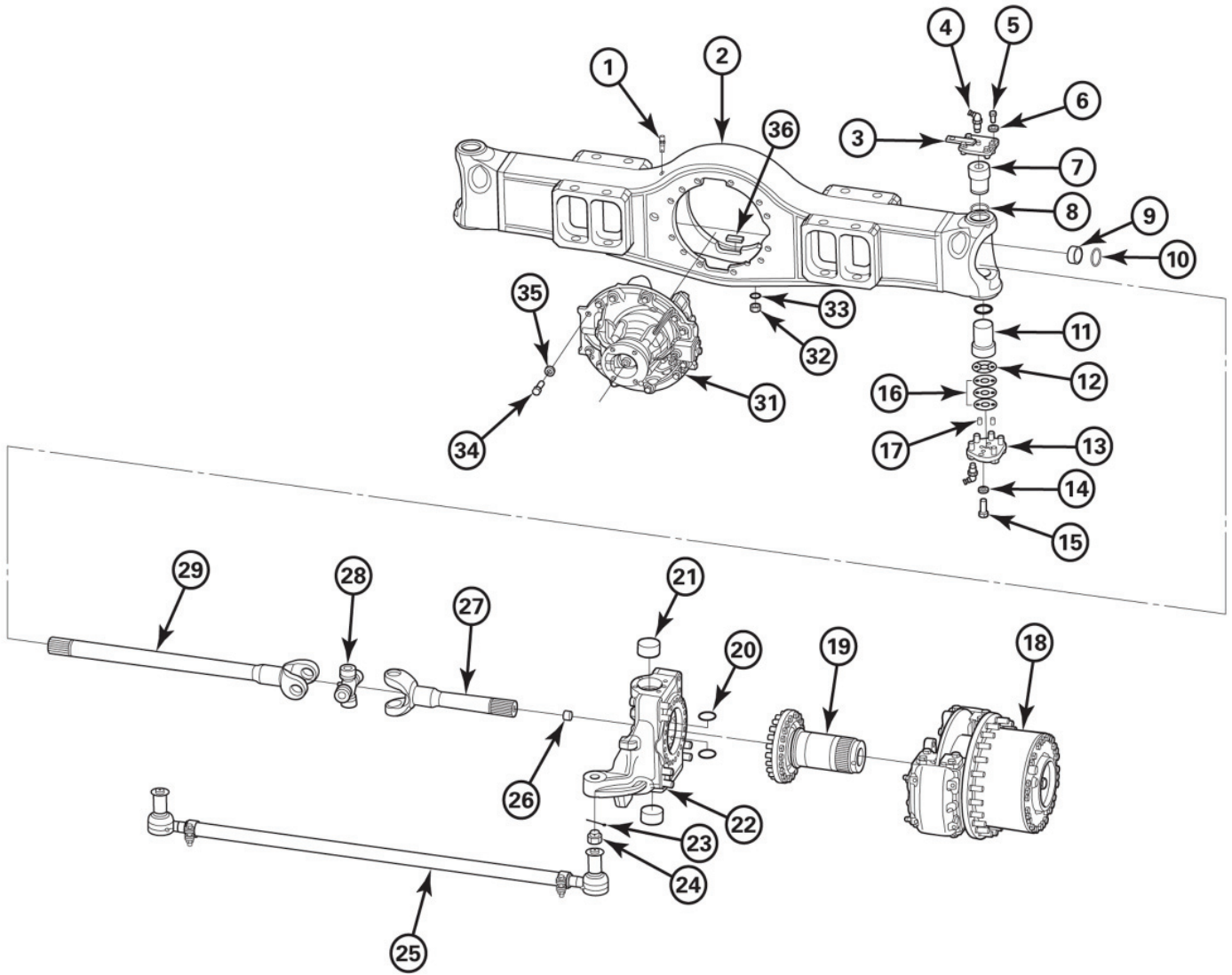
**AFTERMARKET  
OFF-HIGHWAY  
MOXH2H018WS4003-2481**



**MERITOR**

PB-1265

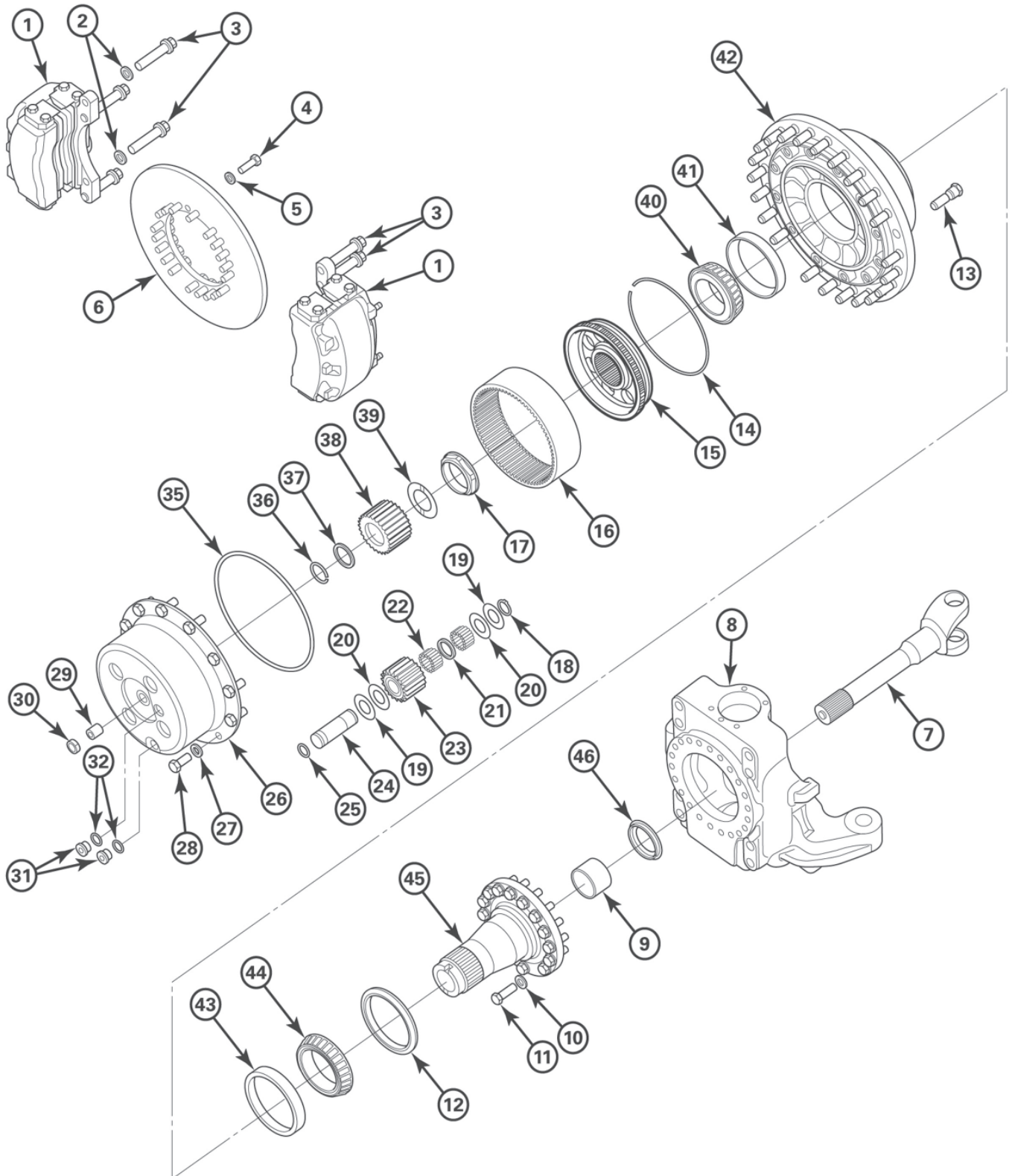
# AXLE EXPLODED VIEW



# AXLE ASSEMBLY COMPONENTS

ITEM	PART NUMBER	QTY (PER AXLE)	DESCRIPTION	REMARKS
1	A-1199-W-4053	1	Breather	
2	A2-3801-Z-1742	1	Axle Housing	
3	2297-Y-8787	As Needed	Cap (Top King Pin)	
4	1199-B-3226	4	Fitting - Grease	Angled
5	MS-212035-A2	10	Bolt (King Pin Cap / Top)	M12x1.75 x 35, Hex
6	1229-D-4632	10	Washer (King Pin Cap / Top)	M12
7 & 11	3101-Y-1091	4	King Pin (Top & Bottom)	
8	5-X-1395	4	O-Ring (King Pin)	
9	1225-L-1442	4	Bushing (Axle Shaft)	
10	A-1205-U-2647	2	Seal - Radial (Axle Shaft / Housing)	
12	1229-X-5146	2	Thrust Washer (King Pin)	
13	2297-X-8786	2	Cap (Bottom King Pin)	
14	1229-W-1557	12	Washer (King Pin Cap / Bottom)	M16
15	MS-216045-A2	12	Bolt (King Pin Cap / Bottom)	M16x2 x 45, Hex
16	Shims			
	2803-B-3850		Shim (1.00 mm)	
	2803-C-3851	As Needed	Shim (0.50 mm)	
	2803-D-3852		Shim (0.25 mm)	
17	43-X-1266	4	Pin - Spirol	
18	See Wheel End	2	Wheel End Assembly	
19	3213-J-2246	2	Spindle	
20	A-1205-M-2795	4	Seal (King Pin)	
21	1225-H-1516	4	Bushing - King Pin	
22	See Wheel End	2	Knuckle	
23	K-2440	2	Pin - Cotter (Tie Rod Nut)	0.25 x 2.5"
25	A-3102-W-4677	1	Tie Rod, Assy w/ Nuts	With Nut
26	2297-Q-8779	2	Thrust Button	
27-29	Axle Shaft			
27	A-3302-W-1011	2	Axle Shaft - Long	
28	CP850N-4	2	U-Joint Replacement Kit	
29	A-3302-S-1007	2	Axle Shaft - Short	
31	A-3200-K-2351-717	1	Carrier - Non Lockout	
32	981281	2	Plug - Magnetic, Oil	
33	949329	2	Ring - Seal (Oil Fill & Drain Plug)	
34	MS-216070-N2	4	Bolt (Carrier / Axle Hsg)	M16x2 x 70, hex
35	1229-W-1557	12	Washer (Carrier / Axle Hsg)	M16
36	2297-K-6771	6	Magnet - Housing	

# WHEEL END VIEW



ITEM	PART NUMBER	QTY (PER AXLE)	DESCRIPTION	REMARKS
1	A-3236-L-2742	2	Caliper - Brake, Assy	
2	1229-Z-1560	8	Washer	7/8"
3	Bolt			
	SP-2039	4	Bolt (Brake Caliper / Knuckle)	Upper. 7/8-9 UNC x 5", 12 point
	SP-2038	4	Bolt (Brake Caliper / Knuckle)	Lower. 7/8-9 UNC x 4", 12 point
4	MS-216050-A2	40	Bolt (Brake Disc / Wheel Hub)	M16 x 2 x 50, Hex
5	1229-W-1557	40	Washer	M16
6	3218-D-1512	2	Disc - Brake (Rotor)	
7	Shaft Assembly			
	A1-3302-S-1007	2	Shaft - Axle, Assy Short	
	A1-3302-W-1011	2	Shaft - Axle, Assy Long	
8	Knuckles			
	3111-V-4338	1	Knuckle - LH	Single Caliper
	3111-W-4339	1	Knuckle - RH	Single Caliper
9	1225-L-1442	4	Bushing (Axle Shaft)	
10	1229-W-1557	32	Washer	M16
11	MS-216050-A2	32	Bolt (Spindle / Knuckle)	M16 x 2 x 50, Hex
12	A-1205-P-2798	2	Seal - Oil (Wheel Hub)	
13	20-X-2572	46	Stud - Wheel	0.75"-UNF
14	1522392	2	Snap Ring (Ring Gear / Hub)	
15	3191997	2	Planetary Ring Gear Hub	
16	1522380	2	Planetary Ring Gear	
17	1227-S-1735	2	Nut -Spindle	
18	914463	8	Snap Ring (Pinion Shaft / Carrier)	
19 - 25	KIT E816	8	Pinion - Planetary, Assembly	
19	1522390	16	Thrustwasher (Planet Pinion Outer)	Brass
20	1522389	16	Thrustwasher (Planet Pinion Inner)	Steel
21	1522388	8	Spacer - Roller (Planet Pinion Needles)	
22	1522387	304	Roller - Brg (Planet Pinion Needles)	
23	1522381	8	Pinion - Planetary	
24	1522386	8	Shaft, Planetary Pinion	
25	949721	8	O-Ring (Planetary Pinion Shaft)	3 x 26.2
26	3298-K-1259	2	Carrier - Planetary	
27	1229-W-1557	24	Washer	M16
28	MS-216040-AM2	24	Bolt (Planetary Carrier / Hub)	M16 x 2 x 40, Hex
29	10-X-1785	2	Screw - Thrust (Sun Gear Outboard)	
30	40-X-1016	2	Nut - Jam (Sun Gear Thrust Screw)	
31	981280	4	Plug, Oil	
32	949329	4	Ring - Seal (Oil Fill & Drain Plug)	
35	982108	2	O-Ring (Planet Carrier / Wheel Hub)	3 x 248
36	1229-A-5149	2	Snap Ring (Sun Gear / Axle Shaft)	
37	1229-M-5187	2	Washer - Retaining	
38	3892-A-5981	2	Sun Gear - Planetary	
39	1229-L-5238	2	Thrustwasher (Sun Gear)	
40 & 41	A1-1228-G-1801	2	Bearing - Wheel Tapered Roller Set	Outer Set
43 & 44	A1-1228-A-1795	2	Bearing - Wheel Tapered Roller Set	Inner Set
42	333-B-4604	2	Hub - Wheel	
45	3213-J-2246	2	Spindle	
46	A-1205-V-2648	2	Seal - Radial (Spindle)	



# BRAKE CALIPER ASSEMBLY COMPONENTS

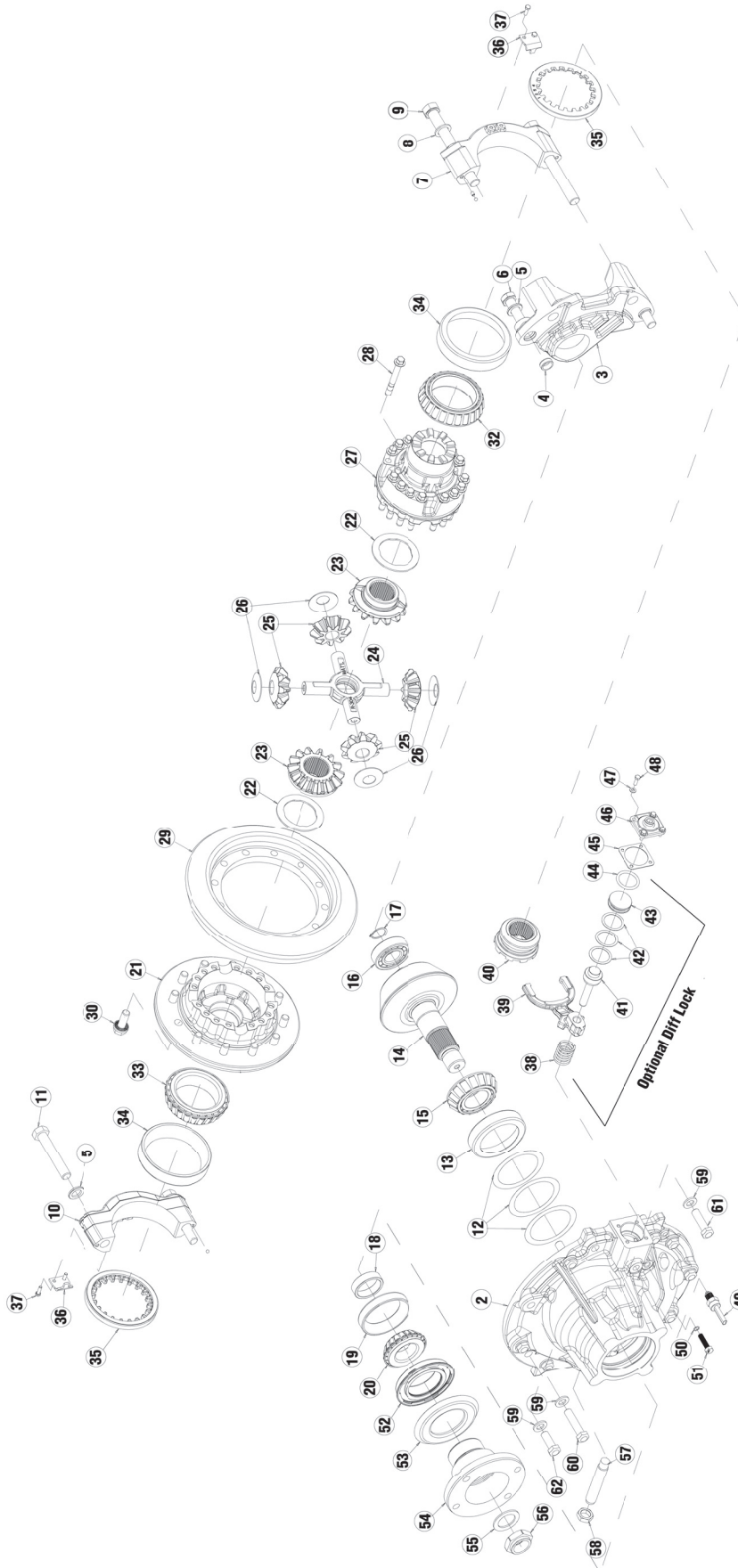
ITEM	ORIGINAL	ALL MAKES	QTY (PER AXLE)	DESCRIPTION
1	3267R1474		1	Housing
2	9680401	M4070002	2	Bleeder Screw
3	9680381	M4060017	2	Seal O-Ring
4	9640105		2	Cap Head
5	9680381	M4060017	2	Seal O-Ring
6	9640105		2	Cap Head
7	9680073		1	Plug
8	2205E1019		4	Plate Lining Retaining
9	521012ZB2		8	Bolt/Capscrew
10	9630159	M4060015	4	Seal – O-Ring
11	9630173	M4060016	4	Ring – Backup
12	1205A2263	M4060014	4	Wiper Piston
13	9640138	M4050004	4	Piston
14	A2 3222X2104	M4020002	2	Brake Pad Assy
15	1229-Z-1560		16	Washer, Hardened
16	Caliper Bolt			
	SP-2039		8	Caliper Bolt - Upper
	SP-2038		8	Caliper Bolt - Lower

BRAKE  
CALIPER

## Caliper Service Kit

ITEM	ORIGINAL	ALL MAKES	QTY (PER AXLE)	DESCRIPTION
	MPS3716	M4010008	As Needed	Caliper Service Kit
	• 1205A2263	• M4060014	4	Wiper Piston
	• 9630159	• M4060015	4	Seal – O-Ring
	• 9630173	• M4060016	4	Ring – Backup
	• 9680381	• M4050004	4	Piston

# CARRIER ASSEMBLY

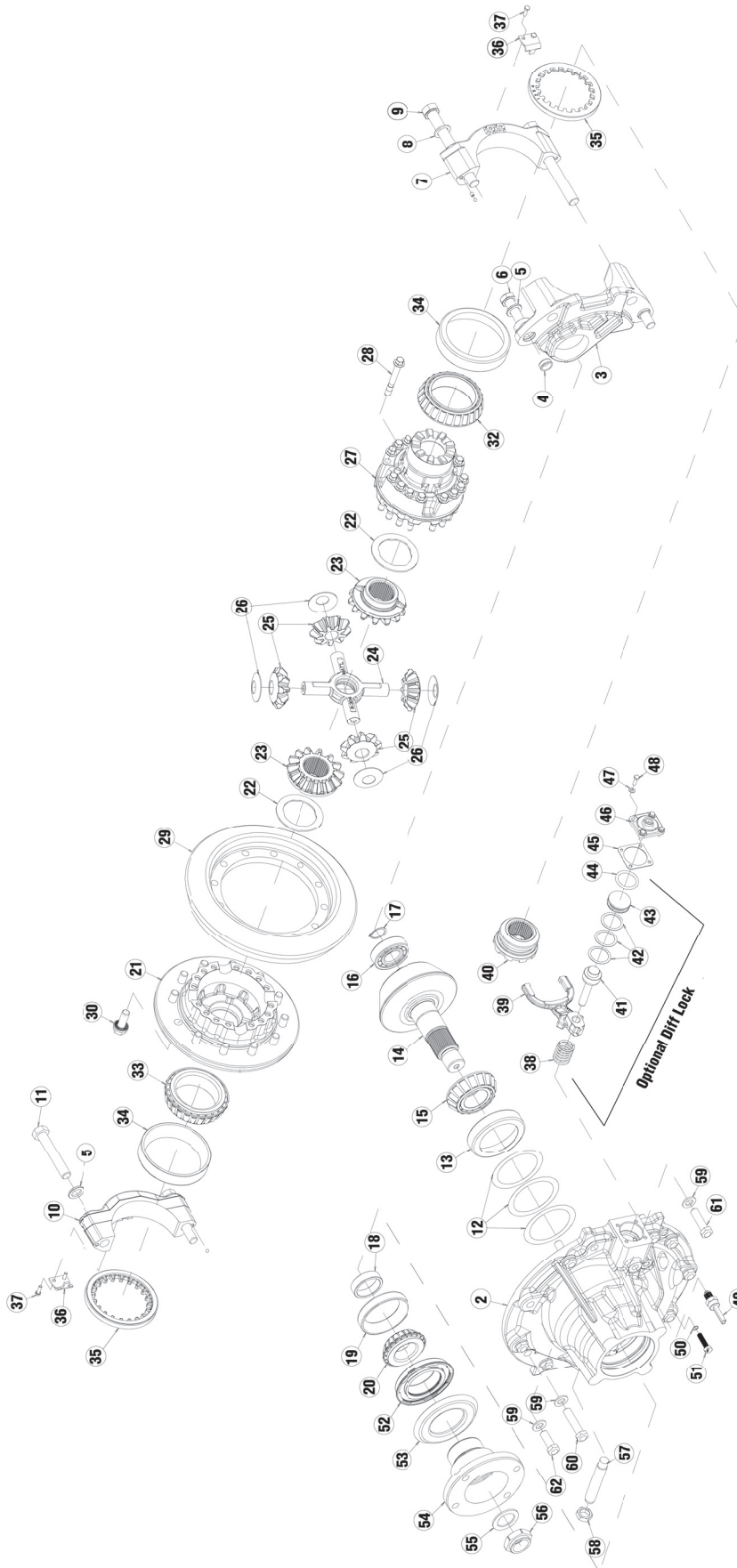




# CARRIER ASSEMBLY COMPONENTS

ITEM	PART NUMBER	QUANTITY	DESCRIPTION
2 - 11	A2-3200-K-2351	1	Carrier – Diff. Fin.
3	A-3212-W-1375	1	Leg-Cap, Assy – Bottom Half
4	1225-T-1528	2	Dowel – Hollow
5	42-X-1021	4	Washer
6	41-X-1739	2	Capscrew – Short
7	A-3212-E-1409	1	Leg Cap Assy (Plain Half Side)
8	42-X-1024	2	Washer
9	41-X-1740	2	Capscrew – Long
10	A-3212-F-1358	1	Leg Cap Assy (Flange Half Side)
11	M-220120-1	2	Capscrew
12	Shims 2803-A-3823 2803-B-3824 2803-C-3825	As Needed	Shim
13	72487	1	Cup Bearing
14 & 29	B-43426-1R-717	1	Gear Set
15	72212C	1	Cone Bearing
16	1228-F-552	1	Bearing Roller
17	46-X-1084	1	Snap-Ring
18	KIT 2322	1	Spacer
19	55437	1	Cup – Bearing
20	55206C	1	Cone – Bearing
21	3235-G-2789	1	Case Diff Flange Half, Fin.
22	1229-Q-5087	2	Washer – Thrust
23	2234-G-1437	2	Gear, Diff Side, Fin.
24	3278-S-305	1	Spider – Diff Fin.
25	2233-J-1024	4	Pinion – Diff Fin.
26	1229-R-1032	4	Washer – Thrust
27	3235-W-2935	1	Case Diff, Plain Half, Fin.
28	41-X-1756	16	Screw – Special
30	41-X-1216	12	Screw – Special
31	1229-U-1503	12	Washer
32	40-X-1182	12	Nut
33	594A	2	Cone – Bearing
34	592A	2	Cup – Bearing
35	2214-G-1255	2	Ring – Brg. Adj. Fin.
36	1220-P-1108	2	Tab – Locking
37	41-X-1669	4	Screw – Special
38	2258-N-1262	1	Spring
39	3296-A-1405	1	Fork – Shif, Fin.
40	3107-U-1321	1	Collar Fin.
41	2244-N-1236	1	Rod – Push, Diff Lock Out

# CARRIER ASSEMBLY



# CARRIER ASSEMBLY COMPONENTS (continued)

ITEM	PART NUMBER	QUANTITY	DESCRIPTION
42	2803-A-3641	As Req'd	Shim
43	2230-Y-1377	1	Piston
44	5-X-888	1	Ring-O
45	2208-Q-1005	1	Gasket
46	3266-S-1033	1	Cover, Fin.
47	MWA 506	4	Washer – Flat
48	41-X-1669	4	Screw – Special
50	5-X-521	1	Ring – O
51	41-X-1742	1	Caging Bolt
52	A-1205-N-2588	1	Seal Assy
53	DEFR50-34	1	Deflector
54	72NYS32-244	1	Flange – Companion, Fin.
55	1229-T-1736	1	Washer – Flat
56	40-X-1237	1	Nut – Lock, Fin.
57	41-X-1371	1	Screw – Thrust
58	40-X-1016	1	Nut – Jam

CARRIER  
ASSEMBLY

# KING PINS, BUSHINGS AND CAPS

AXLE	PART NUMBER	QUANTITY (PER AXLE)	DESCRIPTION
H2 Specification	3101-Y-1091	4	King Pin (Top and Bottom)
	43-X-1266	4	Roll Pin
	1225-H-1516	4	Bushing - King Pin
	1229-X-5146	2	Thrustwasher
	2803-B-3850	As Needed	Shim - 1.00 mm
	2803-C-3851	As Needed	Shim - 0.50 mm
	2803-D-3852	As Needed	Shim - 0.25 mm
	5-X-1395	4	O-Ring
	A-1205-M-2795	4	Seal

# AXLE SHAFT ASSEMBLIES

AXLE	PART NUMBER	QTY (PER AXLE)	DESCRIPTION
H2 Specification	A1-3302-W-1011	1	Axle Shaft - Long
	A1-3302-S-1007	1	Axle Shaft - Short
	CP850N-4	1	U-Joint

# TIE ROD ASSEMBLIES

AXLE	PART NUMBER	QTY (PER AXLE)	DESCRIPTION
H2 Specification	A-3102-W-4677	1	Tie Rod Assembly w/Nuts
	3144-H-1178	1	Tie Rod End - Right
	3144G1177	1	Tie Rod End - Left
	3102-J-4690	1	Tube and Clamps Only
	K-2440	2	Cotter Pin

# CARRIER YOKES AND FLANGES

AXLE	PART NUMBER	QTY (PER AXLE)	DESCRIPTION
H2/N5 Specification	72NYS32-244	1	Yoke
P8 Specification	85WBYS32-20	1	Yoke
All Specs with Park Brake	72NYSB32-343	1	Flange Yoke
P8 with Park Brake	3260-B-2030	1	Flange Adapter

# MOXH2 — BOM

PART NUMBER	DESCRIPTION	QTY	CHART	ITEM #
A 1199W4053	BREATHER	1	Axle	1
P 26	PLUG	1		
981281	OIL FILLER PLUG-MAGNETIC	4	Axle	32
949329	GASKET	6	Axle/Wheel End	33, 32
MS216050A 2	CAPSCREW METRIC	72	Wheel End	4 & 11
MS216070N 2	BOLT/CAPSCREW	4	Axle	34
1229W1557	WASHER-HARDENED	120	Axle/Wheel End	14,35 - 5,10,27
2297K6771	MAGNET-HSG	6	Axle	36
3111V4338	KNUCKLE-STEERING,FIN.	1	Wheel End	8
3111W4339	KNUCKLE-STEERING,FIN.	1	Wheel End	8
1225H1516	BUSHING	4	Axle	21
1229X5146	WASHER-THRUST	2	Axle	12
2803D3852	SHIM	4	Axle	16
2803C3851	SHIM	4	Axle	16
2803B3850	SHIM	4	Axle	16
2803X4002	SHIM	4		
5X1395	RING-O	4	Axle	8
43X1266	PIN-SPIROL	4	Axle	17
1199B3226	FITTING-GREASE	4	Axle	4
3101Y1091	PIN-KNUCKLE	4	Axle	7,11
MS216045A 2	BOLT/CAPSCREW	12	Axle	15
2297Y8787	CAP-KING PIN	2	Axle	3
2297X8786	CAP-KING PIN	2	Axle	13
MS212035A 2	CAPSCREW	10	Axle	5
1229D4632	WASHER	10	Axle	6
A 1205M2795	SEAL ASSY	4	Axle	20
A1 3302S1007	JOINT-SINGLE	1	Axle/Wheel End	27-29, 7
A1 3302W1011	JOINT-SINGLE	1	Axle/Wheel End	27-29, 7
2297Q8779	ROLLER	2	Axle	26
A 1205U2647	SEAL ASSY-OIL	2	Axle	10
A 1205V2648	SEAL ASSY-OIL	2	Wheel End	46
1225L1442	BUSHING ASSY-AXLE SHAFT	4	Axle/Wheel End	9, 9
A2-3801Z1742	HSG ASSY-AXLE,MACHINE	1	Axle	2
A1-3801Z1742	HSG ASSY-W/BRACKETS	1		
A-3801Z1742	HSG ASSY-WELDED,COMPLETE	1		
3305S3191	PLATE,FIN.	2		
3305H2816	PLATE,FIN.	1		
3305T3192	PLATE,FIN.	12		
3213J2246	SPINDLE,FIN.	2	Wheel End	45
333B4604	HUB, FIN	2	Wheel End	42
20X2572	STUD-WHEEL	46	Wheel End	13
A1 1228A1795	BEARING TAPERED ASSY	2	Wheel End	43 & 44
A1 1228G1801	BEARING TAPERED ASSY	2	Wheel End	40 & 41
1227S1735	NUT-WHEEL BRG	2	Wheel End	17
A 1205P2798	SEAL ASSY	2	Wheel End	12

MOXH2-BOM

# MOXH2 — BOM (continued)

PART NUMBER	DESCRIPTION	QTY	CHART	ITEM #
1522380	Ring Gear	2	Wheel End	16
3191997	HUB-RING GEAR	2	Wheel End	15
1522392	RING-RETAINING	2	Wheel End	14
A 3102W4677	ROD ASSY-TIE	1	Axle	25
K2440	COTTER	2	Axle	23
KIT E816	OFF HIGHWAY KITS	8	Wheel End	19-25
914463	RING-RETAINING	8	Wheel End	18
3298K1259	CARR-PLANETARY PINION,FIN.	2	Wheel End	26
MS216040AM 2	BOLT/CAPSCREW	24	Wheel End	28
981280	OIL FILLER PLUG-NON-MAGNETIC	2	Wheel End	31
982108	RING-O	2	Wheel End	35
3892A5981	GEAR-PLANETARY SUN,FIN.	2	Wheel End	38
1229L5238	WASHER-THRUST	2	Wheel End	39
10X1785	SCREW-THRUST	2	Wheel End	29
40X1016	NUT-JAM	2	Wheel End	30
1229M5187	WASHER-FLAT	2	Wheel End	37
1229A5149	RING-SNAP	2	Wheel End	36
A-3236L2742	BRAKE ASSY-DISC	2	Wheel End	1
SP2038	SCREW-12 PT FLG,(FERRY HEAD)	4	Wheel End	3
SP2039	SCREW-12 PT FLG,(FERRY HEAD)	4	Wheel End	3
1229Z1560	WASHER-FLAT	8	Wheel End	2
3218D1512	ROTOR-DISC BRAKE,FIN.	2	Wheel End	6
1199N1860	LUBE FITTING	2		
1199H112	NUT-WHEEL STUD,OUTER,RH	46		
A-3200K2351-717	CARR ASSY-DIFF,NON LOCKOUT	1	Axle	31

# CARRIER — BOM

PART NUMBER	DESCRIPTION	QTY	CHART	ITEM #
A2 3200K2351	CARR-DIFF, & CAP ASSY	1	Carrier	2
2803A3823	SHIM	0	Carrier	12
2803B3824	SHIM	0	Carrier	12
2803C3825	SHIM	0	Carrier	12
592A	CUP-BEARING	2	Carrier	34
2214G1255	RING-BRG ADJ,FIN.	2	Carrier	35
1220P1108	LOCK	2	Carrier	36
41X1669	SCREW-SPECIAL	4	Carrier	37
41X1371	THRUST SCREW	1	Carrier	57
40X1016	NUT-JAM	1	Carrier	58
72487	CUP-BEARING	1	Carrier	13
72212C	CONE-BEARING	1	Carrier	15
KIT 2322	KIT-SPACER	0	Carrier	18
2203J9474	SPACER-.345	2		
2203K9475	SPACER-.346	2		
2203L9476	SPACER-.347	2		
2203M9477	SPACER-.348	2		
2203N9478	SPACER-.349	2		
2203P9480	SPACER-.354	2		
2203Q9481	SPACER-.358	2		
2203R9482	SPACER-.359	2		
2203S9483	SPACER-.360	2		
2203T9484	SPACER-.361	2		
2203U9485	SPACER-.362	2		
55437	CUP-BEARING	1	Carrier	19
55206C	CONE-BEARING	1	Carrier	20
A 1205N2588	AY-OIL SEAL	1	Carrier	52
B-43426-1R-717	GEAR SET	1	Carrier	14,29
KIT 2637	HDWR KIT	1		
1229T1736	WASHER	1	Carrier	55
40X1237	NUT	1	Carrier	56
1228F552	BEARING-ROLLER	1	Carrier	16
46X1084	RING-LOCK	1	Carrier	17
41X1216	BOLT/CAPSCREW	12	Carrier	30
1229U1503	WASHER-FLAT	12	Carrier	31
40X1182	NUT-LOCK,FIN.	12	Carrier	32
3235G2789	CASE-DIFF,FLANGE HALF,FIN.	1	Carrier	21
2234G1437	GEAR-DIFF SIDE,FIN.	2	Carrier	23
1229Q5087	WASHER-THRUST	2	Carrier	22
3278S305	DIFF SPIDER	1	Carrier	24
2233J1024	DIFF PINION	4	Carrier	25
1229R1032	WASHER-THRUST	4	Carrier	26
3235W2935	CASE-DIFF,PLAIN HALF,FIN.	1	Carrier	27
41X1756	BOLT/CAPSCREW	16	Carrier	28
594A	CONE-BEARING	2	Carrier	33

CARRIER  
BOM

# CARRIER — BOM (continued)

PART NUMBER	DESCRIPTION	QTY	CHART	ITEM #
KIT 4812 I	KIT	1		
2208Q1005	GASKET	1	Carrier	45
3266S1033	CYLINDER HOLE COVER	1	Carrier	46
MWA 506	WASHER	4	Carrier	47
41X1669	SCREW-SPECIAL	4	Carrier	48
41X1742	SCREW-SPECIAL	1	Carrier	51
41X1368	CAGING BOLT	1		
5X521	O-RING	1	Carrier	50
41X1022	CAPSCREW	1		
1229U1503	WASHER-FLAT	1		
72NYS32-244A3I	YOKE & DEFLECTOR ASSY	1		
72NYS32-244	YOKE-SPLINE	1	Carrier	54
DEFR50-34	DEFLECTOR	1	Carrier	53



# Shop XpresswayPlus.com for Off-Highway Parts



- 🖱 Place your order
- 🖱 Check Price and Availability
- 🖱 Retrieve Invoices
- 🖱 and more!



**MERITOR<sup>®</sup>**

**Meritor Heavy Vehicle Systems, LLC**  
7975 Dixie Highway  
Florence, KY 41042 USA

**For more information:**

**U.S. 888-725-9355**

**Canada 800-387-3889**

**[XpresswayPlus.com](http://XpresswayPlus.com)**

**[meritor.com](http://meritor.com)**

Vehicle models, brands and names depicted herein are the property of their respective owners, and are not in any way associated with Meritor, Inc., or its affiliates.

Litho in USA Issued 03-12  
PB-1265 (47865)  
©2012 Meritor, Inc.