


**INNO
VATION**
FOR THE ROAD



Product Catalog 2020



 gaff.com

 800 975 74 00

 [GAFFofficial](#)

Torque Rod Bushing

GAFF11739
Suspension



Inch
OD 4 1/4
OD< 2 9/16
ID 4 3/16
LG 80A
HD

VRMS: 016-005-046
OEM# 800010 / 1515986C1

Load Spring

GAFF11740
Suspension



Inch
OD 9 1/4
ID 8
LG 80A
HD

VRMS: 016-005-166
OEM# 15002

Cab Mount Kit

GAFF11086
Cab



Notes / Includes
2 Cab Mount -11008,
2 Cab Mount -11009,
2 3/4" X 5" G8, 2
Lock Nuts 3/4", 4 Flat
Washers 3/4"

VRMS: 014-004-061
OEM# 681-891-00-01 /
A681-891-00-01 / 681-890-
00-01 / A681-890-00-01

Hood Hinge Bushing

GAFF11019
Hood



Inch
OD 1 3/8
ID 1/2
LG 2 3/16
HD 80A

VRMS: 002-004-025
OEM# J17700-5 / J177005

Torque Rod Assy

GAFF12395
Suspension



Inch
C-C 17 5/16
BC-C 4 3/8
BH 5/8
HD 80A
Notes / Includes
Type 1, (13528,
13520) / B, B

VRMS: 016-008-012
OEM# 03-04327 / 924175
/ 5550317 / C65-6016-
000010440

Trunnion Bushing

GAFF14098
Suspension



Inch
OD 4 9/16
ID 3 1/2
HGT 5 3/4
HD 80A

VRMS: 016-005-145
OEM# 11442-00 / 90008011

Hood Guide Bushing

GAFF11020
Hood



Inch
OD 4
OD< 1 1/16
ID 1/2
LG 3
HD 80A

VRMS: 002-004-111
OEM# A17-10464-001

Hood Latch

GAFF11102
Hood



Inch
LG 10
HD 70A

VRMS: 002-004-021
OEM# 17-12438-000

Bar-pin Bushing

GAFF14536
Suspension

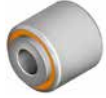


Inch
OD 3 3/16
LG 8
C-C 6 1/4
BH 1
HD 80A

VRMS: 016-005-232
OEM# 48100510 /
90008267 / SRK-644

V-rod Bolt Bushing

GAFF14537
Suspension



Inch
OD 2 3/4
ID 2
HGT 2 7/8
HD 80A

VRMS: 016-005-220
OEM# 90008264 / SRK-645

Hood Latch Assembly

GAFF11103
Hood



Inch
LG 8 9/16
HD 70A

VRMS: 002-004-021
OEM# 680-880-01-60 /
L56-0001

Hood Latch Assembly

GAFF11134
Hood



Inch
LG 8 11/16
LG2 4 3/16
HD 70A - 97A

VRMS: 002-004-021
OEM# 680-880-01-60 /
L56-0001 / Z3-13857

Pivot Bushing

GAFF14538
Suspension



Inch
OD 3 3/16
ID 1 1/8
HGT 4
HD 80A

VRMS: 016-015-052
OEM# 48100509 /
90008266 / SRK-643 /

Torque Rod Bushing

GAFF18919
Suspension



Inch
OD 3 5/8
OD< 3 7/64
ID 2 3/8
LG 3 3/4
HD 80A

VRMS: 016-005-046
OEM# 22128 / R304677A

Torque Rod Bushing

GAFF18920
Suspension



Inch
OD 3 5/8
OD< 3 11/64
ID 2 3/8
LG 3 3/4
HD 80A

VRMS: 016-005-046
OEM# 22129 / R308702

Suspension Bushing Kit

GAFF50047
Suspension



Inch
OD 4 5/8
ID 1 1/8
LG 5
HD 80A
Notes / Includes
2 Suspension Bushing
-50046, 2 Bolt 1 1/8"-
7UNCx9 1/2", 4 Flat
Washer 1/8", 2 Lock
Nut 1 1/8-7UNC

VRMS: 016-014-011
OEM# 48100394 / SRK-530 /
481 00 394 /

Motor Mount

GAFF11018
Motor



Inch
OD 3 1/4
ID 3/4
LG 2 3/16
HD 70A

VRMS: 014-003-043
OEM# LORSS3310018 /
LORSS3310017

Motor Mount

GAFF11065
Motor



Inch
OD 1 3/8
ID 3
WD 2 3/8
LG 5 3/8
C-C 3
BH 5/8
HD 80A

VRMS: 014-003-043
OEM# J20941-3 / J20941-6

Pivot Bushing Kit

GAFF50073
Suspension



Inch
OD> 3
OD< 2 1/4
ID 3/4
LG 3
HD 90A
Notes / Includes
16 Bushing-34514,
8 Sleeve, 8 Collar, 16
Washers, 8 Locknut 3/4"-
10, 8 Bolt 3/4"-10UNC-X
5"

VRMS: 016-018-011
OEM# SRK1190-3 /
R-008839

Motor Mount Kit

GAFF11074
Motor



Inch
WD 3 1/4
LG 7 1/8
C-C 4
BH 3/4
HD 80A

Notes / Includes
1 Lower Mount,
1 Upper Mount

VRMS: 014-003-043
OEM# BCD 26704 1 / BCD
28945-1 / BCD 27651 3 /
BCD 27651-1

Motor Mount Kit

GAFF11077
Motor



Inch
WD 3
LG 9 7/8
C-C 8 5/16
BH 9/16
HD 70A

Notes / Includes
1 Lower Mount,
1 Upper Mount

VRMS: 014-003-043
OEM# BCD 27330-1 / BCD
27330-2 / BCD 288051

Motor Mount Kit

GAFF11087
Motor



Notes / Includes
2 Motor Mount -11018,
2 3/4" X 4 1/2" G8, 2
Lock Nuts 3/4", 4 Flat
Washers 3/4"

VRMS: 014-003-043
OEM# 01-15047-000 /
SSB3310018 / SSB3310017

Motor Mount Kit

GAFF11088
Motor



Notes / Includes
2 Motor Mount -11065, 2
5/8" X 4" G8, 4 Lock Nuts
5/8", 8 Flat Washers 5/8"

VRMS: 014-003-043
OEM# J20941-3 / J20941-6

Cab Mount

GAFF11008
Cab



Inch
OD 3 3/4
ID 1 3/16
LG 1 5/16
HD 80A

VRMS: 014-003-053
OEM# 681-891-00-01 /
A681-891-00-01

Cab Mount

GAFF11009
Cab



Inch
OD 3 13/16
OD< 2 1/2
ID 3/4
LG 2 9/16
HD 80A

VRMS: 014-004-061
OEM# 681-890-00-01 /
LORSS3310017B / A681-
890-00-01

Motor Mount Kit

GAFF11089
Motor



Notes / Includes
2 Motor Mount Kit
-11077, 2 3/4" X 4 1/2"
G8, 2 Lock Nuts 3/4", 4
Flat Washers 3/4"

VRMS: 014-003-043
OEM# BCD 27330-1 / BCD
28945-1 / BCD 288051

Motor Mount Kit

GAFF11090
Motor



Notes / Includes
1 Motor Mount Kit
-11074, 2 3/4" X 4 1/2"
G8, 2 Lock Nuts 3/4", 4
Flat Washers 3/4"

VRMS: 014-003-043
OEM# BCD 26704 1 / BCD
28945-1 / BCD 27651 3 /
BCD 27651-1

Motor Mount GAFF11112



Motor

Inch
OD 3 5/16
ID 2 11/16
THK 7/8
HD 70A

VRMS: 014-003-043
OEM# J197911

Cab Mount Kit GAFF11113



Motor

Notes / Includes
1 Motor Mount -11112,
1 Motor Mount -11095

VRMS: 004-005-005
OEM# 17-1843 / J197911 / J201204

Torque Rod Bushing GAFF13521



Suspension

Inch
OD 2
C-C 4 7/16
BH 5/8
HD 80A

VRMS: 016-008-118
OEM# A16-119448 / 47691-000L / R305275 / 47691

Torque Rod End Assy GAFF13683



Suspension

Inch
LG 8 9/16
BC-C 4 3/8
BH 5/8
HD 80A

Notes / Includes
Tube end w 13520

VRMS: 016-008-012
OEM# IPC02810 / 66610-000H / 1693531C1 / 928610

Motor Mount GAFF11725



Motor

Inch
OD 2 3/8
OD< 1 1/2
ID 5/8
LG 2 1/8
HD 80A

VRMS: 014-003-043
OEM# CBA24-650-17

Trailer & Dock Bumper GAFF18848



Safety

Inch
THK 3 5/8
WD 5 5/8
LG 7 3/8
C-C 5 7/16
BC-C 3 1/8
BH 1/2
HD 80A

VRMS: 014-002-000
OEM# 602035

Torque Rod Bushing Kit GAFF40263



Suspension

Inch
OD 2 15/16
C-C 4 3/8
BH 25/32
HD 80A

Notes / Includes
Bushing, Retaining
Lock Clip

VRMS: 016-008-118
OEM# 055.480.040.000

Torque Rod Bushing Kit GAFF40264



Suspension

Inch
OD 2 5/8
ID 7/8
LG 2 15/16
HD 80A

Notes / Includes
Bushing, Retaining
Lock Clip

VRMS: 016-008-118
OEM# 062.480.093.00-01

Torque Rod Bushing GAFF11004



Suspension

Inch
OD 2 1/16
LG 6 5/8
C-C 4 3/8
BH 11/16
HD 80A

VRMS: 016-008-118
OEM# A16-119448 / 47691-000L / R305275

Spring Pin Bushing GAFF11005



Suspension

Inch
OD 2 1/2
LG 7 1/2
C-C 5 3/4
BH 13/16
HD 80A

VRMS: 016-002-011
OEM# 16-13962-000 / W300861 / 3538115C1 / 681-325-01-50

Radiator Mount GAFF11021



Temperature

Inch
OD 2 15/16
ID 11/16
LG 1 13/16
HD 70A

VRMS: 042-002-019
OEM# 05-16070-000

Radiator Mount GAFF11831



Temperature

Inch
OD 2 1/2
OD< 1 3/16
ID 5/8
THK 5/8
HGT 13/16
HD 60A

VRMS: 042-002-019
OEM# J-8006-10

Torque Rod Assy GAFF11078



Suspension

Inch
C-C 23 13/16
BC-C 4 3/8
BH 11/16
HD 80A

Notes / Includes
Type 1, (2-11004) / A

VRMS: 016-008-012
OEM# 16-16749-001 / 681-326-6716

Torque Rod Assy GAFF11081



Suspension

Inch
C-C 24 5/16
BC-C 4 3/8
BH 11/16
HD 80A

Notes / Includes
Type 1, (2-11004) / A

VRMS: 016-008-012
OEM# 16-16749-002 / 16-18972-000 / 681-326-72-16

Spring Pin Bushing GAFF11083



Suspension

Inch
OD 2 1/2
LG 7 7/16
C-C 5 11/16
BH 7/8
HD 80A

VRMS: 016-002-011
OEM# 16-18035-000 / 16-16412-001

Torque Rod Assy GAFF11152



Suspension

Inch
C-C 24 7/32
BC-C 4 3/8
BH 5/8
HD 80A

Notes / Includes
Type 1, (2-13520) / B

VRMS: 016-008-012
OEM# 16-15632-000 / 16-18972-000

Torque Rod Assy GAFF11153



Suspension

Inch
C-C 22 7/8
BC-C 4 3/8
BH 5/8
HD 80A

Notes / Includes
Type 1, (2-13521) / C

VRMS: 016-008-012
OEM# 16-16749-000 / 681-326-6316

Bolster Spring GAFF11159



Suspension

Inch
WD 5 1/2
LG 10 3/4
C-C 7 1/2
C-C2 9 1/4
THR 1 1/2
HGT 4 5/8
HD 80A

VRMS: 016-005-177
OEM# 16-15010-000

V-bar Bushing (Apex) GAFF11162



Suspension

Inch
OD 98.5 mm
LG 8 13/32
C-C 6 7/8
HD 80A

VRMS: 016-005-046
OEM# A348634

Equalizer Bushing GAFF13005



Suspension

Inch
OD 3 1/2
OD< 2 11/16
ID 2
LG 4 7/16
HD 90A

VRMS: 016-005-039
OEM# UXA-000004

Spring Pad GAFF14087



Suspension

Inch
THK 13/16
WD 2 7/8
LG 5
HD 80A

VRMS: 016-005-174
OEM# 814-00

V-bar Bushing (End) GAFF11163



Suspension

Inch
OD 74mm
C-C 4 3/8
HD 85A

VRMS: 016-005-046
OEM# A237903 / A-237903

Insulator Cap GAFF11164



Suspension

Inch
WD 5 3/32
LG 3 29/32
LG2 3 23/32
HGT 3
HD 75A

VRMS: 016-005-052
OEM# 11-19581-000

Trunnion Bushing GAFF14088



Suspension

Inch
OD 4 9/16
ID 3 1/2
HGT 5 3/4
HD 80A

VRMS: 016-005-145
OEM# 11442-00 / 90008011

Torque Rod Bushing GAFF13001



Suspension

Inch
OD 2 3/16
OD< 1 13/16
ID 1 1/4
LG 2 3/8
HD 90A

VRMS: 016-005-046
OEM# UXA-000011 / 7620-00

Insulator, Spring Tip GAFF11165



Suspension

Inch
WD 3 31/32
LG 3 15/16
HGT 2 23/32
HD 70A

VRMS: 016-005-052
OEM# 11-19580-000 / 11-19583-000 / 11-20806-000

V-rod Bushing GAFF11166



Suspension

Inch
OD 85 mm
LG 8 13/32
C-C 6 7/8
HD 85A

VRMS: 016-005-046
OEM# 70480054000

Fruehauf

Bolster Spring Kit

GAFF13722
Suspension



Inch
HD 70A

Notes / Includes
2 Bolster Spring -13601, 1 Auxiliary Load Spring -13611, 16 Bolt 7/16" X 1 1/4" UNF, 16 Lock Nuts 7/16" UNF, 32 Flat Washer 7/16"

VRMS: 016-005-177
OEM# 60879 / 641794 / 49377-000 / 60879-000

Easy-mount

GAFF83520
Suspension



Inch
OD 2 3/4
C-C 4 3/8
BH 5/8
HD 80A

VRMS: 016-008-118
OEM# 44895 / 64400-002L / 1693061C1 / 02-227720

Easy-mount

GAFF83596
Suspension



Inch
OD 4 3/8
C-C 8 1/2
BH 1 1/16
HD 80A

VRMS: 016-005-164
OEM# 34013-88L / 34013088

Motor Mount

GAFF10503
Motor



Inch
OD 2 13/16
ID 1 1/32
LG 5/8
HD 2 3/8
80A

VRMS: 014-003-043
OEM# 470031C2 / EE14003053

Motor Mount

GAFF10505
Motor



Inch
OD 3 1/16
ID 1 5/8
LG 2 5/8
HD 80A

VRMS: 014-003-043
OEM# 479237C1 / 583955C1 / 14003030 / 14003052

Motor Mount Kit

GAFF34500
Motor



Inch
THK 3 11/16
WD 3 1/8
LG 5 1/2
BH 11/16
HD 80A

Notes / Includes
1 Motor Mount -34507,
1 Motor Mount -34507,

VRMS: 014-003-043
OEM# 1664728C1 / 1664728C2 / 5801893941 / 5801896897

Motor Mount Kit

GAFF34510
Motor



Inch
WD 3 5/16
LG 13/16
BH 4 11/16
HD 80A

Notes / Includes
1 Motor Mount -34507,
1 Motor Mount -34507,

VRMS: 014-003-043
OEM# 1664729C1 / 1664729C2 / 1664729C3 / 1664730C5

Motor Mount Kit

GAFF34525
Motor



Notes / Includes
2 Motor Mount Kit
-34510, 2 Bolt 3/4" X 4"
G8, 2 Lock Nut 3/4", 4
Flat Washers 3/4"

VRMS: 014-003-043
OEM# 1664729C1 / 1664730C5 / 20147772C2 /

Spring Pin Bushing

GAFF11005
Suspension



Inch
OD 2 1/2
LG 7 1/2
C-C 5 3/4
BH 13/16
HD 80A

VRMS: 016-002-011
OEM# 16-13962-000 / W300861 / 3538115C1 / 681-325-01-50

Hutchens

Equalizer Bushing

GAFF13005
Suspension



Inch
OD 3 1/2
OD-C 2 11/16
ID 2
LG 4 7/16
HD 90A

VRMS: 016-005-039
OEM# UXA-000004

Spring Pad

GAFF14087
Suspension



Inch
THK 13/16
WD 2 7/8
LG 5
HD 80A

VRMS: 016-005-174
OEM# 814-00

Torque Rod Assy

GAFF12074
Suspension



Inch
C-C 23 3/4
BC-C 4 3/8
BH 11/16
HD 80A

Notes / Includes
Type 1, (2-11729) /
B !!High articulation
bushing

VRMS: 016-008-012
OEM# 25164945 / 25180749 / 1516350C91 / 1516350C92

Bolster Spring

GAFF13601
Suspension



Inch
THK 5 1/2
WD 7 3/4
LG 10 7/16
BH 5 5/8
C-C 5 5/8
HGT 5 1/2
HD 80A

VRMS: 016-005-177
OEM# 49377 / 60879-000 / 2501596C1 /

Trunnion Bushing

GAFF14088
Suspension



Inch
OD 4 9/16
ID 3 1/2
HGT 5 3/4
HD 80A

VRMS: 016-005-145
OEM# 11442-00 / 90008011

Torque Rod Bushing

GAFF13001
Suspension



Inch
OD 2 3/16
OD-C 1 13/16
ID 1 1/4
LG 2 3/8
HD 90A

VRMS: 016-005-046
OEM# UXA-000011 / 7620-00

Beam End Bushing Kit

GAFF13607
Suspension



Inch
OD 4 3/8
BH 1 1/16
HD 80A

Notes / Includes
Bushing, 2 Bolt 1"-
8UNC X 6" G8, 2 Lock
Nut 1" UNC, 4 Flat
Washers 1"

VRMS: 016-005-164
OEM# 34013-087L / 1697717C91 / 50150

Torque Rod Assy

GAFF34563
Suspension



Inch
C-C 25 3/8
BC-C 4 3/8
BH 5/8
HD 80A

Notes / Includes
Type 1, (2-13521) / C

VRMS: 016-008-012
OEM# 3548381C1 / 4C424612AA / 3580088C1

Radiator Mount

GAFF18063
Temperature



Inch
OD 1 5/8
OD-C 13/16
ID 1/2
LG 3/4
HD 80A

VRMS: 042.002-019
OEM# 270203C1

Torque Rod Bushing

GAFF11739
Suspension



Inch
OD 4 1/4
OD-C 3 1/2
ID 2 9/16
LG 4 3/16
HD 80A

VRMS: 016-005-046
OEM# 800010 / 1515966C1

Cab Mount

GAFF34515
Cab



Inch
OD-C 3 3/8
C-C 5
BH 3/4
HD 70A

VRMS: 014-004-004
OEM# 3515345C2 / 3515345C1

Cab Mount

GAFF34516
Cab



Inch
OD 2 7/8
ID 1 1/2
LG 3 3/8
HD 70A

VRMS: 014-004-061
OEM# 3574878C1 / 3574680C1

Motor Mount

GAFF34509
Motor



Inch
ID 11/16
THK 4 3/8
WD 4 3/16
LG 4 1/16
HD 80A

VRMS: 014-003-043
OEM# 1664723C2 / 1664724C2 / 4C426038A

Motor Mount Kit

GAFF34526
Motor



Notes / Includes
2 Motor Mount -34509,
2 Bolt 5/8" X 3 1/2" G8,
2 Lock Nut 5/8", 4 Flat
Washers 5/8"

VRMS: 014-003-043
OEM# 1664723C2 / 1664723C3 / 1664724C2 / 4C426038A

Hood Latch Assy

GAFF10506
Hood



Inch
LG 8
HD 80A - 97A

VRMS: 002-004-021
OEM# 1689929C9 / 499523C3 / 1689930C91

Motor Mount

GAFF10075
Motor



Inch
OD 3
ID 1 1/2
LG 3
HD 80A

VRMS: 014-003-043
OEM# 60879 / 49377-000 / 2506180C91

Bolster Spring Kit Pair

GAFF13721
Suspension



Inch
HD 70A

Notes / Includes
2 Bolster Spring
-13601, 16 Bolt 7/16"
X 1 1/4" UNF, 16 Lock
Nuts 7/16" UNF, 32
Flat Washer 7/16"

VRMS: 016-005-177
OEM# 60879 / 49377-000 / 2506180C91

Torque Rod Assy GAFF12070
Suspension



Inch
C-C 20
BC-C 4 3/8
BH 5/8
HD 80A

Notes / Includes
Type 1, (2-13520) / B

VRMS: 016-008-012
OEM# 170F460P200 /
170F473M / 3226713 /
25170831

Torque Rod Assy GAFF12071
Suspension



Inch
C-C 24 3/16
BC-C 4 3/8
BH 5/8
HD 80A

Notes / Includes
Type 1, (2-13520) / B

VRMS: 016-008-012
OEM# 170F460P243 /
25170833 / 62000-615

Torque Rod Assy GAFF12073
Suspension



Inch
C-C 21 1/2
BC-C 4 3/8
BH 5/8
HD 80A

Notes / Includes
Type 1, (2-13520) / B

VRMS: 016-008-012
OEM# 25174658 /
170F460P215

Torque Rod Assy GAFF12074
Suspension



Inch
C-C 23 3/4
BC-C 4 3/8
BH 11/16
HD 80A

Notes / Includes
Type 1, (2-11729) /
B !!High articulation
bushing

VRMS: 016-008-012
OEM# 25164845 /
25160749 / 1516350C91 /
1516350C92

Bumper Stop GAFF12085
Suspension



Inch
OD 4 11/32
OD-C 3
ID 1 5/16
BH 1/2
HGT 5 1/4
HD 70A

VRMS: 016-002-005
OEM# 20K2420

Torque Rod Assy GAFF13634
Suspension



Inch
C-C 22
BC-C 4 3/8
BH 11/16
HD 80A

Notes / Includes
Type 1, (2-11729) /
B !!High articulation
bushing

VRMS: 016-008-012
OEM# 57857-006 /
25174706

Shock Absorber Bushing GAFF18010
Suspension



Inch
OD 1 1/2
ID 3/4
LG 15/16
HD 80A

VRMS: 016-006-003
OEM# R30401011 /
508678 / V8057131 / 140149

Torque Rod Assy GAFF18860
Suspension



Inch
C-C 22 1/8
BC-C 4 3/8
BH 5/8
HD 80A

Notes / Includes
Type 1, (2-13520) / B

VRMS: 016-008-012
OEM# 30SO4525 /
3187322 / 35801-0068

Spring Bushing GAFF31129
Suspension



Inch
OD 2 9/16
OD-C 1 3/4
ID 7/8
LG 3 9/16
HD 80A

VRMS: 016-002-011
OEM# 880150 / 52550 /
20830479 / 20830478

Air Cooler Mount GAFF12049
Temperature



Inch
OD 1 1/4
ID 3/8
LG 1 1/16
HD 70A

VRMS: 042-002-045
OEM# 20QL37P3

Motor Mount Kit GAFF12045
Motor



Inch
WD 1 1/2
C-C 1 1/4
BH 5/8
HGT 2 1/2
HD 70A

Notes / Includes
1 Lower Mount, 1
Upper Mount

VRMS: 014-003-043
OEM# 20QL322 / 20QL329 /
25164809 / 25172757

Torque Rod Assy GAFF12069
Suspension



Inch
C-C 21
BC-C 4 3/8
BH 5/8
HD 80A

Notes / Includes
Type 1, (2-13520) / B

VRMS: 016-008-012
OEM# 170F460P210 /
170F473M2 / 25170832

Torque Rod Assy GAFF12072
Suspension



Inch
LG 7
C-C 1 1/8
BC-C 4 3/8
BH 5/8
THR 1 1/4-12 UNF
HD 80A

Notes / Includes
Type 2, (13520,
12031) / B, D

VRMS: 016-008-012
OEM# 170F464P180 /
1RY48P23 / 170F251P11 /
25162529

Suspension Bushing Kit GAFF13762
Suspension



Inch
OD 6
ID-C 7/8
HGT 4 3/4
HD 80A

Notes / Includes
1 Suspension Bushing
-13752, 2 Wear Shim
-13542, 1 Sleeve, 1 Bolt

VRMS: 016-008-028
OEM# 21226963 /
A-1225-N-1522 / KIT11201

Spring End Pad GAFF14540
Suspension



Inch
THK 3/4
WD 4 11/16
LG 6 9/16
HGT 11/16
HD 80A

VRMS: 016-005-174
OEM# R301329A

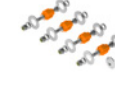
Shock Absorber Bushing GAFF18010
Suspension



Inch
OD 1 1/2
ID 3/4
LG 15/16
HD 80A

VRMS: 016-006-003
OEM# R30401011 /
508678 / V8057131 / 140149

Control Arm Bushing Kit GAFF50032
Suspension



Inch
OD 2 3/8
ID 7/8
LG 3
HD 80A

Notes / Includes
4 Bushing, 4 Bolt 7/8"-UNC X
6" GS, 2 Pivot Washer 3" X 7/8"
X 1/2", 4 Lock Nut 7/8" UNC,
8 Thrust Washer 7/8", 8 Flat
Washer 7/8"

VRMS: 016-008-010
OEM# KIT11300

Torque Rod Bushing Kit GAFF50033
Suspension



Notes / Includes
2 Torque Rod Bushing
-34514, 1 Pivot Bolt 7/8"-
16 UNF X 6 GB, 1 Lock
Nut 7/8", 1 Flat Washer
7/8", 1 Sleeve 1 1/2" X
7/8" X 3"

VRMS: 016-008-118
OEM# KIT11102 / KIT11107 /
M302502

Torque Rod Bushing Kit GAFF50067
Suspension



Inch
OD 2
ID 7/8
LG 8
HD 30A

Notes / Includes
1 Bushing -14026, 2
Washer, 1 Bolt 7/8"-9 UNC
X 6", 1 Locknut 7/8"-9 UNC

VRMS: 016-008-118
OEM# KIT11102 / KIT11107 /
M302502

Neway

Torque Rod Bushing GAFF11739
Suspension



Inch
OD 4 1/4
OD-C 3 1/2
ID 2 9/16
LG 4 3/16
HD 80A

VRMS: 016-005-046
OEM# 800010 / 1515986C1

Load Spring GAFF11740
Suspension



Inch
OD 9 1/4
ID 8
LG 8
HD 80A

VRMS: 016-005-166
OEM# 15002

Torque Rod Assy GAFF12395
Suspension



Inch
C-C 17 5/16
BC-C 4 3/8
BH 5/8
HD 80A

Notes / Includes
Type 1, (13528, 13520)
/ B, B

VRMS: 016-008-012
OEM# 03-04327 / 924175 /
5550317 / C65-8016-
000010440

Trunnion Bushing GAFF14088
Suspension



Inch
OD 4 9/16
ID 3 1/2
HGT 5 3/4
HD 80A

VRMS: 016-005-145
OEM# 11442-00 / 90080011

Bar-pin Bushing GAFF14536
Suspension



Inch
OD 3 3/16
LG 8
C-C 6 1/4
BH 1
HD 80A

VRMS: 016-005-232
OEM# 48100510 /
90008267 / SRK-644

V-rod Bolt Bushing GAFF14537
Suspension



Inch
OD 2 3/4
ID 2
HGT 2 7/8
HD 80A

VRMS: 016-005-220
OEM# 9008264 / SRK-645

Pivot Bushing GAFF14538
Suspension



Inch
OD 3 3/16
ID 1 1/8
HGT 4
HD 80A

VRMS: 016-015-052
OEM# 48100509 /
90008266 / SRK-643

Torque Rod Bushing GAFF18919
Suspension



Inch
OD 3 5/8
OD-C 3 7/64
ID 2 3/8
LG 3 3/4
HD 80A

VRMS: 016-005-046
OEM# 22128 / R304677A

Cab Mount GAFF11520 Cab



Inch
OD 2 7/8
OD> 1 7/8
ID 5/8
LG 1 5/16
HD 80A

VRMS: 014-003-053
OEM# 07-03286 / K066-228

Motor Mount GAFF12360 Cab



Inch
OD 3 1/8
OD< 1 13/16
ID 5/8
LG 2 3/4
HD 80A

VRMS: 014-003-043
OEM# 20-08257 / 20-08867 / 13-04711

Torque Rod Bushing GAFF15013 Suspension



Inch
OD 1 15/16
ID 7/8
LG 3
HD 80A

VRMS: 016-005-046
OEM# 09729-01 / 34734C1 / A1712 /

Torque Rod Bushing GAFF15051 Suspension



Inch
OD 2 3/8
OD< 1 13/16
ID 1
LG 2 13/16
HD 80A

VRMS: 016-005-046
OEM# T-2242

Exhaust Mount GAFF12357 Exhaust



Inch
OD 1 5/16
ID 3/8
LG 1 1/4
HD 70A

VRMS: 043-003-065
OEM# 14-14656 / 14-B656

Exhaust Bushing Kit GAFF12381 Exhaust



Inch
OD 1 5/16
ID 3/8
LG 1 1/4
HD 70A

Notes / Includes
8 Exhaust Mount -12357

VRMS: 043-003-008
OEM# 14-14656 / 14-B656 / PB-B4656

Torque Rod Bushing Kit GAFF15064 Suspension



Inch
OD 2 3/8
OD> 1 13/16
ID 1
LG 3
HD 80A

Notes / Includes
2 Bushing -15073, Bolt 1" x 7", 2 Locknuts, 2 Washers

VRMS: 016-005-046
OEM# TK1997 / TK19089 / R301993 / T-5493

Equalizer Bushing Kit GAFF15075 Suspension



Inch
OD 3 1/2
OD> 2 7/8
ID 1 21/32
LG 12 1/16
HD 80A

Notes / Includes
2 Bushing -15076, 2 Lock Washers, 2 Bolts, 2 Washers, 1 Shaft

VRMS: 016-005-066
OEM# T-5524 / TK12506 / TK16996

Hood Mount GAFF12359 Hood



Inch
WD 1 15/16
LG 3 1/8
HGT 2 3/8
HD 70A

VRMS: 002-004-015
OEM# 13-03510

Hood Mount GAFF12364 Hood



Inch
WD 2
LG 3 1/8
HGT 2 3/8
HD 80A

VRMS: 002-004-015
OEM# 13-04711 / 20-08257 / 20-8867

Hood Hinge Bushing GAFF12370 Hood



Inch
OD 1 13/16
ID 1/2
LG 5/8
HD 80A

VRMS: 002-004-043
OEM# 13-04154

Motor Mount GAFF11537 Motor



Inch
OD 3 11/16
OD< 2 1/16
ID 3/4
LG 2 1/2
HD 80A

VRMS: 014-003-043
OEM# 05-08969 / 05-10103 / 05-16401

Cab Mount GAFF11008 Cab



Inch
OD 3 3/4
ID 1 3/16
LG 1 5/16
HD 80A

VRMS: 014-003-053
OEM# 681-891-00-01 / A681-891-00-01

Cab Mount GAFF11009 Cab



Inch
OD 3 13/16
OD< 2 1/2
ID 3/4
LG 2 3/16
HD 80A

VRMS: 014-004-061
OEM# 681-890-00-01 / LORSB33310017B / A681-890-00-01

Motor Mount GAFF11539 Motor



Inch
THK 2 9/16
WD 2 1/16
LG 5 3/4
C-C 3
BH 5/8
HD 80A

VRMS: 014-003-043
OEM# K066-247 / 05-15646 / K066-320 / M506-70NR

Torque Rod Bushing GAFF11729 Suspension



Inch
OD 2 3/4
C-C 4 3/8
BH 11/16
HD 80A

VRMS: 016-008-118
OEM# 836940 / 839310

Cab Mount Kit GAFF11086 Cab



Notes / Includes
2 Cab Mount -11008, 2 Cab Mount -11009, 2 3/4" X 5" G8, 2 Lock Nuts 3/4", 4 Flat Washers 3/4"

VRMS: 014-004-061
OEM# 681-891-00-01 / A681-891-00-01 / 681-890-00-01 / A681-890-00-01

Hood Hinge Bushing GAFF11019 Hood



Inch
OD 1 3/8
ID 1/2
LG 2 3/16
HD 80A

VRMS: 002-004-025
OEM# J17700-5 / J177005

Air Cooler Mount GAFF11554 Temperature



Inch
OD 1 1/8
OD< 3/4
ID 3/8
LG 7/8
HD 80A

VRMS: 042-002-045
OEM# M200 / M200-70EP / 13-01633 / 13-03096

Motor Mount GAFF11065 Motor



Inch
OD 1 3/8
ID 5/8
WD 2 3/8
LG 5 3/8
C-C 3
BH 5/8
HD 80A

VRMS: 014-003-043
OEM# J20941-3 / J20941-6

Motor Mount Kit GAFF11074 Motor



Inch
WD 3 1/4
LG 7 3/8
C-C 4
BH 3/4
HD 80A

Notes / Includes
1 Lower Mount, 1 Upper Mount

VRMS: 014-003-043
OEM# BCD 26704 1 / BCD 28945-1 / BCD 27651 3 / BCD 27651-1

Reyco

Torque Rod Bushing GAFF14010 Suspension



Inch
OD 2
ID 7/8
LG 3
HD 80A

VRMS: 016-005-046
OEM# 13945-01 / E1H-15781EA / 47692

Torque Rod Bushing GAFF14073 Suspension



Inch
OD 1 15/16
ID 1
LG 3
HD 80A

VRMS: 016-005-046
OEM# 026900 / 722-00 / UCA-3754

Motor Mount Kit GAFF11089 Motor



Notes / Includes
2 Motor Mount Kit -11077, 2 3/4" X 4 1/2" G8, 2 Lock Nuts 3/4", 4 Flat Washers 3/4"

VRMS: 014-003-043
OEM# BCD 27330-1 / BCD 27330-2 / BCD 288051

Motor Mount Kit GAFF11090 Motor



Notes / Includes
1 Motor Mount Kit -11074, 2 3/4" X 4 1/2" G8, 2 Lock Nuts 3/4", 4 Flat Washers 3/4"

VRMS: 014-003-043
OEM# BCD 26704 1 / BCD 28945-1 / BCD 27651 3 / BCD 27651-1

Bolster Spring

GAFF11159
Suspension



Inch
WD 5 1/2
LG 10 3/4
C-C 7 1/2
C-C2 9 1/4
THR 1 1/2
HGT 4 5/8
HD 80A

VRMS: 016-005-177
OEM# 16-15010-000

V-bar Bushing (Apex)

GAFF11162
Suspension



Inch
OD 98.5 mm
LG 8 13/32
C-C 6 7/8
HD 80A

VRMS: 016-005-046
OEM# AS48834

Wheel Chock

GAFF18455
Safety



Inch
THK 5 1/2
WD 6 5/16
LG 8 11/16

VRMS:
OEM#

Wheel Chock

GAFF40095
Safety



Inch
ID 1 5/8
ID< 7 1/4
THK 7 1/4
WD 8 3/8
LG 12
HGT 8

VRMS:
OEM#

V-bar Bushing (End)

GAFF11163
Suspension



Inch
OD 74mm
LG 5 7/8
C-C 4 3/8
HD 85A

VRMS: 016-005-046
OEM# A237903 / A-237903

Insulator Cap

GAFF11164
Suspension



Inch
WD 5 3/32
LG 3 29/32
LG2 3 23/32
HGT 3
HD 75A

VRMS: 016-005-052
OEM# 11-19581-000

Bumper Block (Severe Duty)

GAFF40172
Safety



Inch
WD 6
LG 7 7/8
ID 5 1/2
C-C 3 1/8
BH 1/2
HGT 3
HD 80A

VRMS: 055-001-020
OEM# 602035

Shock Absorber Bushing

GAFF18566
Suspension



Inch
OD 1 7/8
ID 1
LG 1
HD 80A

VRMS: 016-006-003
OEM# 401754 / 90008003 / 02-00377 / 140K136

Insulator, Spring Tip

GAFF11165
Suspension



Inch
WD 3 31/32
LG 3 15/16
HGT 2 23/32
HD 70A

VRMS: 016-005-052
OEM# 11-19580-000 / 11-19583-000 / 11-20806-000

V-rod Bushing

GAFF11166
Suspension



Inch
OD 85 mm
LG 8 13/32
C-C 6 7/8
HD 85A

VRMS: 016-005-046
OEM# 70480054000

Hinge Bushing

GAFF18574
Suspension



Inch
OD 3 1/2
ID 2
LG 3 1/2
HD 80A

VRMS: 059-004-007
OEM# 348 / 348A

Torque Rod Assy

GAFF13733
Suspension



Inch
LG2 8 1/16
C-C 24 1/4
BC-C 4 3/8
BH 5/8
THR 1 1/4-12 UNF
HD 80A

VRMS: 016-008-012
OEM# 62350-615 / 25171605 / 17QF455P243

Notes / Includes
Type 2, (13520, 13518)
/ D, B

Truck

Trailer Truck

Glad Hand Seal

GAFF17674
Brakes



Inch
OD 1 5/8
ID 3/8
THK 3/8
HD 65A

VRMS: 013-010-450
OEM# 12-0161 / 36011 / 441738 / DA9017B

Glad Hand Seal

GAFF17675
Brakes



Inch
OD 1 5/8
ID 5/8
THK 3/8
HD 65A

VRMS: 013-010-450
OEM# 12-0162 / 36012 / 441737 / DA9017R

Cab Mount

GAFF11705
Cab



Inch
OD 3
OD< 1 13/16
ID 5/8
LG 2 3/8
HD 80A

VRMS: 002-036-122
OEM# K066-176 / 476869C1 / 05-14794 / CB11242

Carrier Bearing

GAFF40074
Drivershaft



Inch
ID 2 3/8
C-C 8 3/2
BH 1/2
HGT 3 11/32
HD 70A

VRMS: 024-002-007
OEM# 1810 Series / 2106611X / 210661-1X / D4TZ4800J

Vibration Mount

GAFF12380
Cab



Inch
OD 2 5/16
OD< 1 13/16
ID 11/16
LG 1 13/32
HD 60A

VRMS: 151-004-204
OEM# 91-2618 / 91-4159

Vibration Mount

GAFF18015
Motor



Inch
OD 1 7/8
OD< 1 5/16
ID 1/2
LG 2
HD 70A

VRMS: 151-004-204
OEM# 92-8893 / 92-7620 / CB2202-12 / 6700B-3442

Carrier Bearing

GAFF40075
Drivershaft



Inch
ID 7 7/16
C-C 2 5/16
BH 1/2
HGT 2 25/32
HD 70A

VRMS: 024-002-007
OEM# 1710 Series / 2101211X / 210121-1X / D4TZ4800G

Fifth Wheel Bushing

GAFF10002
Fifth Wheel



Inch
OD 1 4
ID 1 1/4
LG 2 1/4
HD 80A

VRMS: 059-001-004
OEM# BSH-150

Snubber Mount

GAFF50055
Motor



Inch
OD 2 9/16
OD< 1 13/16
ID 15/16
LG 1 1/8
HD 90A

VRMS: 151-004-204
OEM# 91-4043 / 91-4159

Vibration Mount

GAFF50056
Motor



Inch
OD 2 9/16
OD< 1 7/16
ID 1 1/4
ID< 5/8
LG 1 7/8
HD 60A

VRMS: 151-004-204
OEM# 91-1404 / 91-2578 / 91-7709

Fifth Wheel Bushing Kit

GAFF40140
Fifth Wheel



Notes / Includes
2 Bushing -11517, 2 Pin,
2 Cotter Pin

VRMS: 059-001-004
OEM# RK004413

Fifth Wheel Bushing Kit

GAFF40141
Fifth Wheel



Notes / Includes
2 Bushing -10002,
2 Pin, 2 Lock Pin, 2
Cotter Pin

VRMS: 059-001-004
OEM# BSH-150

Torque Rod Assy GAFF13735 Suspension



Inch
C-C 14 3/8
BC-C 4 3/8
BH 5/8
HD 80A
Notes / Includes
Type 1, (2-13520) / B

VRMS: 016-008-012
OEM# 62007355 / 50376-001 / 170F357M / 32271-102

Load Pad Kit GAFF12036 Suspension



Notes / Includes
4 Load Pad -12010, 4 Load Pad -12014, 4 Bolt 7/8" X 4" UNC, 12 Bolt 7/8" X 6" UNF, 12 Lock Nut 7/8" UNF, 16 Flat Washers 7/8"

VRMS: 016-005-174
OEM# 100K370 / 25115012 / 100K368 / 21036254

Load Pad Kit GAFF12039 Suspension



Notes / Includes
4 Load Pad -12006, 4 Load Pad -12014, 4 Bolt 7/8" X 4" UNC, 12 Bolt 7/8" X 5" UNF, 12 Lock Nut 7/8" UNF, 16 Flat Washers 7/8"

VRMS: 016-005-174
OEM# 100K365A / 25121508 / 100K368 / 21036254

Cab Mount GAFF12084 Cab



Inch
ID 17mm
WD 2 1/4
LG 6
C-C 4 5/8
BH 16mm
HGT 3 7/8
HD 70A

VRMS: 014-004-004
OEM# 30SQ4525AM / 20975430

Motor Mount GAFF12000 Motor



Inch
OD 3 1/4
OD> 2
ID 3/4
LG 1 5/32
HD 80A

VRMS: 014-003-043
OEM# 20QL1175 / 20QL1118A

Torque Rod Assy GAFF12042 Suspension



Inch
LG 7
C-C 26
BC-C 4 3/8
BH 5/8
THR 1 1/4-12 UNF
HD 80A
Notes / Includes
Type 2, (13520, 12031) / B, D !!Two piece design, weld to length

VRMS016-008-012
OEM# 35801-5018

Torque Rod Assy GAFF12044 Suspension



Inch
C-C 26
BC-C 4 3/8
BH 5/8
HD 80A
Notes / Includes
Type 1, (2-13520) / B !!Two piece design, weld to length

VRMS016-008-012
OEM# 48661 / 66661-000H / 35801-5012

Motor Mount GAFF12023 Motor



Inch
OD 3 5/8
OD> 2 5/16
ID 7/8
LG 1 15/16
HD 80A

VRMS: 014-003-043
OEM# 20QL324M

Motor Mount Kit GAFF12034 Motor



Notes / Includes
8 Motor Mount -12000, 4 Bolt 3/4" - 16UNF X 6 1/2" G8, 4 Lock Nut 3/4", 8 Flat Washer 3/4", 8 Flat Washer 3 3/16"

VRMS: 014-003-043
OEM# 204SX216 / 20QL1175 / 20QL1118A

Torque Rod Assy GAFF12070 Suspension



Inch
C-C 20
BC-C 4 3/8
BH 5/8
HD 80A
Notes / Includes
Type 1, (2-13520) / B

VRMS: 016-008-012
OEM# 170F460P200 / 170F473M / 3226713 / 25170831

Torque Rod Assy GAFF12071 Suspension



Inch
C-C 24 3/16
BC-C 4 3/8
BH 5/8
HD 80A
Notes / Includes
Type 1, (2-13520) / B

VRMS: 016-008-012
OEM# 170F460P243 / 25170833 / 62000-615

Motor Mount Kit GAFF12035 Motor



Notes / Includes
8 Motor Mount -12000, 4 Bolt 3/4" - 16UNF X 5" G8, 4 Lock Nut 3/4", 8 Flat Washer 3/4", 8 Flat Washer 3 3/16"

VRMS: 014-003-043
OEM# 204SX389

Motor Mount GAFF12046 Motor



Inch
OD 2 5/8
ID 1 1/16
C-C 1 1/16
HD 70A

VRMS: 014-003-043
OEM# 20QL312M2

Torque Rod Assy GAFF12073 Suspension



Inch
C-C 21 1/2
BC-C 4 3/8
BH 5/8
HD 80A
Notes / Includes
Type 1, (2-13520) / B

VRMS: 016-008-012
OEM# 25174658 / 170F460P215

Torque Rod Assy GAFF12074 Suspension



Inch
C-C 23 3/4
BC-C 4 3/8
BH 1 1/16
HD 80A
Notes / Includes
Type 1, (2-11729) / B !!High articulation bushing

VRMS: 016-008-012
OEM# 25164945 / 25160749 / 1516350C91 / 1516350C92

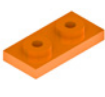
Cab Mount GAFF12052 Motor



Inch
ID 13 1/16
WD 2 1/4
LG 6
C-C 4 11/16
HGT 3 7/8
HD 70A

VRMS: 014-004-004
OEM# 30QS3479AM / 20975430

Motor Mount GAFF12301 Motor



Inch
THK 1 3/4
WD 3/4
C-C 6 1/4
HD 80A

VRMS: 014-003-043
OEM# 04-900997 / 12004-3402

Bumper Stop GAFF12085 Suspension



Inch
OD 4 1 1/32
OD< 3
ID 1 5/16
BH 1/2
HGT 5 1/4
HD 70A

VRMS: 016-002-005
OEM# 20K2420

Torque Rod Assy GAFF13634 Suspension



Inch
C-C 22
BC-C 4 3/8
BH 1 1/16
HD 80A
Notes / Includes
Type 1, (2-11729) / B !!High articulation bushing

VRMS: 016-008-012
OEM# 57857-006 / 25174706

Load Pad GAFF12006 Suspension



Inch
WD 4 1/2
HGT 2 3/8
HD 80A

VRMS: 016-005-174
OEM# 100K363C / 100K368 / 25121508

Load Pad GAFF12010 Suspension



Inch
WD 5 3/16
HGT 6 3/2
HD 80A

VRMS: 016-005-174
OEM# 100K370 / 25115012

Spring Bushing GAFF31129 Suspension



Inch
OD 2 9/16
OD< 1 3/4
ID 7/8
LG 3 9/16
HD 80A

VRMS: 016-002-011
OEM# 880150 / 52550 / 20830479 / 20830478

Air Cooler Mount GAFF12049 Temperature



Inch
OD 1 1/4
ID 3/8
LG 1 1/16
HD 70A

VRMS: 042-002-045
OEM# 20QL37P3

Load Pad GAFF12014 Suspension



Inch
WD 6
HGT 3 3/4
HD 80A

VRMS: 016-005-174
OEM# 100K363C / 100K368 / 25125064 / 21036254

Trunnion Bushing GAFF12015 Suspension



Inch
OD 4 11/16
ID 3 7/16
LG 6 1/4
HD 80A

VRMS: 016-005-145
OEM# 100K276 / 100K219P3 / 100K219P2 / 25154319

Motor Mount Kit GAFF12045 Motor



Inch
WD 2 1/2
C-C 7 1/4
BH 5/8
HGT 2 1/2
HD 70A
Notes / Includes
1 Lower Mount, 1 Upper Mount

VRMS: 014-003-043
OEM# 20QL322 / 20QL329 / 25164809 / 25172757

Torque Rod Assy GAFF12069 Suspension



Inch
C-C 21
BC-C 4 3/8
BH 5/8
HD 80A
Notes / Includes
Type 1, (2-13520) / B

VRMS: 016-008-012
OEM# 170F409P210 / 170F473M2 / 25170832

Torque Rod Assy

GAFF12072
Suspension



	Inch
LG	7
C-C	18
BC-C	4 3/8
BH	5/8
THR	1 1/4-12 UNF
HD	80A

Notes / Includes
Type 2, (13520, 12031) / B, D

VRMS: 016-008-012
OEM# 17QF464P180 / 1RY46P23 / 17QF251P11 / 25162529

Western Star

Motor Mount

GAFF12301
Motor



	Inch
THK	1 1/4
WD	3
C-C	6 1/4
HD	80A

VRMS: 014-003-043
OEM# 04-9009997 / 12004-3402

Motor Mount

GAFF18102
Motor



	Inch
OD	3 5/8
OD<	2 3/16
ID	3/4
LG	2 7/16
HD	80A

VRMS: 014-003-043
OEM# 05-16819 / 12005-3403

Radiator Bushing

GAFF12366
Temperature



	Inch
OD	1 3/16
OD<	1
ID	5/8
LG	23/32
HD	80A

VRMS: 042-002-019
OEM# 07-02552 / 656-215

Torque Rod Assy

GAFF11080
Suspension



	Inch
LG2	8 1/16
C-C	24
BC-C	4 3/8
BH	5/8
THR	1 1/4-12 UNF
HD	80A

Notes / Includes
Type 2, (13520, 13518) / D, B

VRMS: 016-008-012
OEM# 38801-3441 / K195-376 / 17QF455P240 / 925031

Cab Mount

GAFF11523
Temperature



	Inch
OD	2 7/8
OD<	1 13/16
ID	5/8
LG	1 5/16
HD	80A

VRMS: 014-003-053
OEM# 12004-3401 / J7165-1 / K066-228 / K066-251

Torque Rod Assembly Types

Type 1



Type 2



Type 3



Style of Bushing

A



B



C



D



E



INNOVATION
FOR THE ROAD



Official Distributor


gaff.com


800 975 74 00

   
GAFFofficial