

GEHL

GCT TELEHANDLERS



GEHL[®]
WORKS LIKE YOU[™]

PRODUCTIVITY + COMFORT

The GEHL GCT Compact Telehandler has been designed to save you time and money. Suitable for many environments, whether for landscaping sites, equestrian centers, renovation works, etc. With a capacity of 2200 lbs or 2650 lbs, the GCT can easily move pallets of concrete blocks or bricks, bundles of straw or hay. Its ultra-compact dimensions and ground clearance of 11.4" make it an ideal choice for

moving around in cramped spaces and off-road. Thanks to its light weight, the machine can easily be transported on a small trailer (GVWR 7716 lbs). Finally, the many options available and the multitude of accessories allow you adapt your machine to the environment it operates in. GEHL is committed to designing machines that ensure optimum productivity for users.



EASY ACCESS CABIN

Easily access the cab through a large opening door without a step.

AUTOMATIC PARKING BRAKE

Each time the machine stops, the parking brake is directly engaged, for more security.

BATTERY SWITCH

This system manually shuts off the electrical circuit of the machine.



GET THE JOB DONE IN A GEHL

JOYSTICK ON FLOATING ARMREST

Controlled operation without fatigue, with all one-handed movements. You always keep one hand on the steering wheel for total control of your machine.



OPERATOR ASSISTANCE

A set of pop-ups inform the operator in real time about the use of a machine.



OPTIMAL VISIBILITY

Benefit from an unobstructed view of the load, in the high position. The roof window is made of polycarbonate, a transparent and very resistant material to meet the FOPS standard (protection against falling objects). The hoses are well protected on the inside of the boom to increase the visibility on the right side.



A FULL RANGE OF OPTIONS

- Air Suspension Cloth-Covered Seat
- Full Road Lighting
- Return to Tank
- Flat LED Rotating Beacon
- LED Work Lights on Boom Head (x2)
- Auto Reversing Fan
- Rear Electric Plug
- Attachment Hydraulic Line + Easy Connect System
- Continuous Flow Hydraulics
- Stop & Start
- Attachment Hydraulic Locking
- SafeView Camera Pack (x2)
- Windscreen Protection Grid
- Universal Skid Steer Attachment System Standard

THE FULL LIST OF OPTIONS IS AVAILABLE UPON REQUEST. PLEASE CONTACT YOUR GEHL DEALER FOR FURTHER INFORMATION.

REDUCED TRANSPORT COST

LIGHTWEIGHT

Transportable machine on a trailer with a GVWR* of 7,000 lbs

*Gross Vehicle Weight Rating

SAFETY

Well-identified tie-down points are accessible in front and rear of the machine

FOLDING FORKS (SHAFT CARRIAGE ONLY)

The floating fork carriage allows the forks to be fastened to the carriage to gain length while facilitating secure transport on trailers.

14' 1"
MAXIMUM LIFTING HEIGHT

2,200 LBS OR 2,650 LBS
2 MODELS TO CHOOSE FROM

3 STEERING MODES



2-WHEEL



4-WHEEL



CRAB

COMPACT DIMENSIONS

136.6"
LENGTH

58.7"
WIDTH

75.6"
HEIGHT

35.1 hp (26.2 kW) Engine

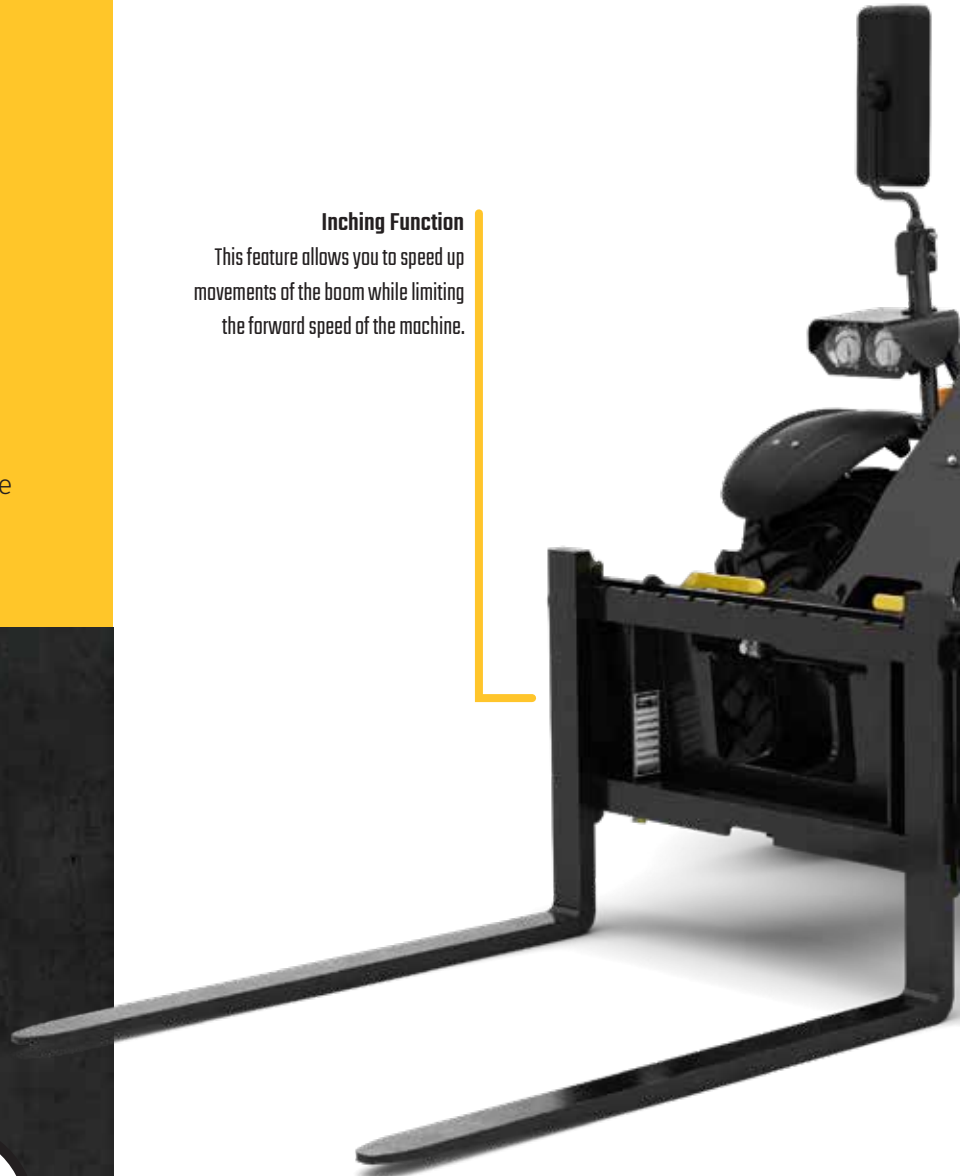
Meeting the Tier IV Final environmental standard, exhaust gas treatment is carried out using a DDC (Diesel Oxidation Catalyst) and a particulate filter.

Inching Function

This feature allows you to speed up movements of the boom while limiting the forward speed of the machine.

Simultaneous Boom Movements

The flow sharing distributor enhances simultaneous movements for efficient work. You choose to do one or several movements at the same time for multiple function use.





Electronic Carriage Compensation System

Automatic fork leveling. We've improved visibility to the rear of the machine by removing the cylinder. This also reduces the machine weight, optimizing fuel consumption.

Hydrostatic Transmission

Choose your speed with a simple gesture. The hydrostatic transmission guarantees smooth handling without jerks. Perfect in cramped spaces and saves you time!

Limited Slip Differentials on Front and Rear Axles

The machine is perfectly adapted to muddy grounds.



COMPACTNESS AND MANEUVERABILITY

With a width of 58.7" and a height 175.6", the machine moves with ease in the tightest spaces: urban or congested sites, entrances, garages, stalls, etc. The small turning radius and 4-wheel steering make maneuvering easier.



ALL TERRAIN

Its ground clearance of 11.4" allows the GCT to easily overcome all obstacles. The oscillating rear axle guarantees maximum stability. The machine is equipped with 4-wheel drive standard and fenders at the front of the machine.

FULL SUPPORT

 **ATTACHMENTS**

 **PARTS**

 **FINANCE**

Manitou Group is here to help support and service the machines you love. From Financing, Warranties, Maintenance and more, we are dedicated to support the end customer.

Whether you're in agriculture or construction, Manitou Group provides machines, attachments and services adapted to your daily needs. Our goal is to make your life easier! See what you can accomplish with your new GEHL and keep your peace of mind with Manitou Group services and solutions.

REDUCE YOUR TCO

REDUCE YOUR FUEL CONSUMPTION

The Stop & Start option reduces fuel consumption, CO² emissions, the number of recorded engine hours and noise pollution by automatically stopping the engine when the machine is stationary. Engine restart is automated without turning the key.

-25% HYDRAULIC OIL

The hydraulic oil tank is equipped with an anti-aeration filter. It reduces the volume of hydraulic oil required by 25%.

FAST + SIMPLIFIED MAINTENANCE

- Service intervals and error codes are displayed on the dashboard screen.

- The large opening engine hood on the side of the machine allows easy access to the main components.

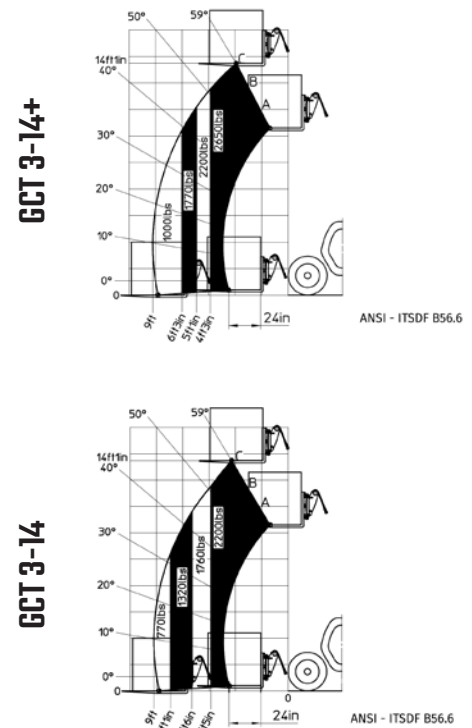
- The fuel and hydraulic oil tanks are easily accessible and clearly identified.

- A hatch at the front of the radiators makes it possible to remove the straw and dust in front of the radiators.

- The battery is easily accessible, just under the cab.

SPECIFICATIONS

		GCT 3-14		GCT 3-14+	
DIMENSIONS	Maximum Capacity	2200 lbs	998 kg	2650 lbs	1202 kg
	Maximum Lifting Height	169.3"	4300 mm	169.3"	4300 mm
	Maximum Forward Reach	103.1"	2619 mm	103.1"	2619 mm
	Minimum Shipping Mass	5622 lbs	2550 kg	5952 lbs	2700 kg
	Maximum Shipping Mass	6063 lbs	2750 kg	6393 lbs	2900 kg
	Overall Length without Attachment	136.6"	3470 mm	136.6"	3470 mm
	Height to Top of Cab	75.6"	1920 mm	75.6"	1920 mm
	Overall Width - Less Bucket	58.7"	1491 mm	58.7"	1491 mm
	Outer Turning Radius	103.1"	2619 mm	103.1"	2619 mm
ENGINE	Engine Manufacturer	Yanmar			
	Engine Standard	Stage V			
	Engine Power	35 hp	26 kW	35 hp	26 kW
	Transmission Type	Hydrostatic			
	Travel Speed	15.5 mph	25 km/hr	15.5 mph	25 km/hr



A MULTIFUNCTION MACHINE

attachments for all of your needs

Thanks to the large choice of accessories designed and validated by the Manitou Group, your GCT can easily be transformed into tool carriers for placing or stacking loads, clearing snow, sweeping your site, or loading bulk materials. Easily change for your needs with the universal skid steer attachment system.

LIGHT MATERIAL BUCKET



Designed for bulk material with a density maximum of 50 lbs/ft³, this bucket allows high loading productivity thanks to its capacity of 203 gallons.

GENERAL PURPOSE BUCKETS



Dedicated to construction applications for moving bulk material of 131.1 lbs/ft³ maximum density with a 106 gallon capacity.

GRAPPLE BUCKET



Multifunctional and efficient, it allows you to load and unload bulk material of 62.4 lbs/ft³ maximum density with a capacity of 159 gallons.

SNOW BLADE



Easy to use and solid, it is designed to withstand all winters by effectively clearing snow in a single passage.

WRAPPED BALE CLAMP



Qualitative and easy to use, this clamp is made for transport and storage of wrapped bales. The smooth arm structure avoids any perforation of the film.

MANURE FORK



Robust and versatile solution for dredging and moving bulky manure or haystacks. The opening of the grapple at 90° makes it possible to work close to the walls.

GEHL[®]

WORKS LIKE YOU[™]

GEHL.COM



Manitou Americas, Inc.



P.O. Box 179



One Gehl Way



West Bend, WI, USA 53095

P: (262) 334-9461

F: (262) 338-7517

Manitou Group reminds users to read and understand the operator's manual before operating any equipment. Also, make sure all safety devices and shields are in place and functioning properly. Manitou Group reserves the right to add improvements or make changes in specifications at any time without notice or obligation.

© 2023 Manitou Equipment America, LLC. All registered and unregistered marks are owned by Manitou Equipment America, LLC or its affiliates. All rights reserved.

® denotes registration in the United States. Trademarks may or may not be registered in other countries.