

STRONG PERFORMANCE TO ANSWER THE CALL

RS-35-185 REAR DRIVE AXLE

Cummins-Meritor has long understood that fire and rescue vehicles require components specifically designed for maximum performance. Our fire and rescue components are made to handle the speed requirements, stop-and-go, hard braking and road conditions unique to the application.

With the addition of the RS-35-185 single reduction rear drive axle, Cummins-Meritor has single rear axles for fire and rescue applications with gross axle weight ratings (GAWRs) of 23,000 to 35,000 pounds. The RS-35-185 axle is available with industry-leading Cummins-Meritor drum brakes and features driver-controlled differential lock (DCDL) availability.



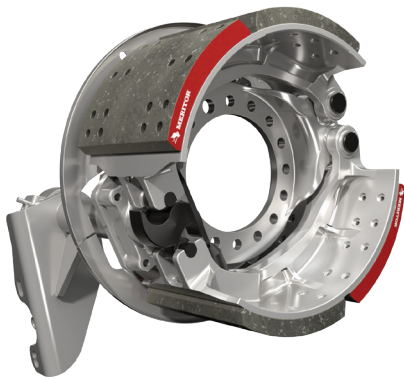
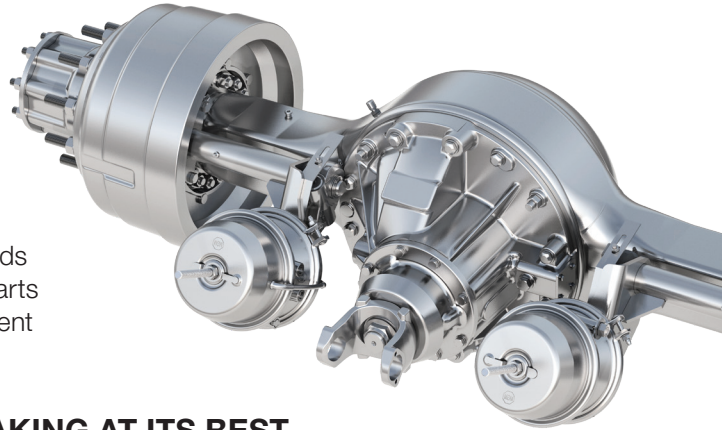
Meritor

**FOR
A WORLD
THAT'S
ALWAYS ON™**

RS-35-185 REAR DRIVE AXLE

THE AXLE THAT PERFORMS FOR FIRE AND RESCUE

The RS-35-185 single reduction rear drive axle is all about axle payload and strong performance. With a weight rating of 35,000 pounds and its stamped steel-fabricated axle housing, the RS-35-185 is built for the most demanding fire and rescue applications. In addition to its DCDL option, it offers standard wide-track housing, industry-familiar U-series wheel-ends and the proven RS-180 Series differential carrier. It also shares parts commonality and packaging envelope compatibility with the current Cummins-Meritor RS-30-185 axle.



FOUNDATION BRAKING AT ITS BEST

Cummins-Meritor Cast+ cam brakes offer added durability and reliability with a single-piece, cast shoe and thick, extended-life brake linings that provide exceptional resistance to heat related wear in heavy-duty applications. Available in 16.5-inch x 6-inch or the larger 16.5-inch x 8.625-inch.

You can trust that Cummins-Meritor's heritage of braking performance in the fire and rescue industry ensures that it's engineered for performance in demanding work environments.

REAR HYPOID SINGLE-REDUCTION AXLE SPECIFICATIONS*

Ratings	35,000 lbs (15,876 kg)
Axle model	RS-35-185
Standard ratios	3.42, 3.58, 3.73, 4.30, 4.56, 4.89, 5.13, 5.38, 5.63, 5.86, 6.14, 6.83, 7.17, 7.83
Ring gear size (pitch diameter)	19.62 in (498 mm)
Axle shaft spline size	2.35 in (60 mm) – 46 Teeth
Axle shaft diameter	2.25 in (57 mm)
Housing box size	5.5 in x 5.5 in (140 mm x 140 mm)
Wall thickness at spring seat	0.56 in (14 mm) 0.63 in (16 mm) Wide track
Wheel-end series	U

*Depending on Cummins-Meritor application approval. Refer to publication TP-7824 for complete axle specification details.



Cummins Inc.
Box 3005
Columbus, IN 47202-3005
U.S.A.

cummins.com

Trademarks, brands and names depicted herein are the property of Cummins Inc., Meritor, Inc. or its affiliates.

SP-1924
Bulletin 6523909 Produced in U.S.A. Rev. 1/24
©2024 Meritor, Inc.