

MERITOR® CAST IRON AND STEELITE X30™ BRAKE DRUMS FOR THE AFTERMARKET





A BRAKE DRUM PORTFOLIO THAT'S STRONG ENOUGH TO TAKE THE HEAT.

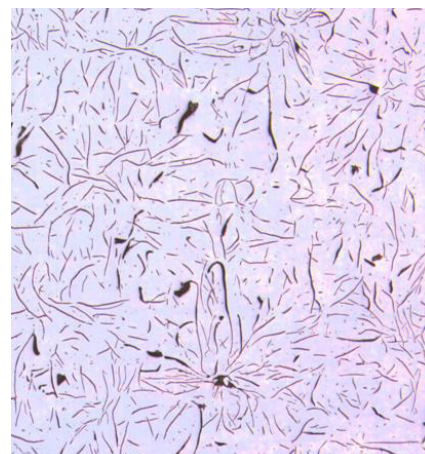
Meritor® is a worldwide brake industry leader, recognized for many leading brake components, including brake shoes, brake friction and brake drums. When comparing aftermarket truck or trailer drums, consider all of the advantages of Meritor brake drums. Meritor aftermarket drums are designed and engineered by Meritor to perform across a broader range of applications that today's light, medium- and heavy-duty fleet customers demand.

The Meritor drum portfolio offers the exact combination of strength and weight you need for enhanced durability, plus maintenance and fuel savings. This includes lightweight, standard and heavy-duty cast drums for light- to heavy duty cycles as well as our premium Meritor STEELite X30™ and our Opti-Lite™ steel drums.

MERITOR CAST BRAKE DRUMS.

We Start With The Right Stuff. And Stop With It Too.

Meritor cast iron drums are engineered with high quality cast iron alloy with type A graphite formulation at the brake contact surface area to enhance heat dissipation. Graphite efficiently conducts the heat built up during braking away from the brake contact surface, allowing it to dissipate from the drum. Lower temperatures during braking allow for longer friction life and improved drum durability. Meritor brake drums are designed for enhanced thermal properties to extend life and improve fade resistance. Meritor cast brake drums are tested using FMVSS 121 dynamometer specifications.



Meritor graphite formulation (Type A)

Meritor Lightweight Cast Brake Drum.

- Reduced metal weight drum provides durable performance and operational cost savings in light- to medium-duty cycles
- Ideal for over-the-road tractor and trailer axle applications across light-to-normal duty cycles
- Ideal for aftermarket use

Meritor Standard-Duty Cast Brake Drum.

- Genuine drum with superior resistance to heat checking
- Higher weight improves resistance to heat-checking for normal-to-moderate duty cycles
- Ideal for over-the-road tractor and trailer axle applications

Meritor Heavy-Duty Cast Brake Drum.

- Genuine drum ideal for severe-duty applications such as freight hauling, refuse, construction, logging and more
- Engineered for strength and improved heat absorption and dissipation

Meritor Cast Brake Drum Specifications.

| Lightweight Cast Brake Drum Specifications | | | | | | | | | |
|---|---------|----------------|---------------|---------------------|----------------|----------------------|---------------|----------------|--------|
| Cast Drum Part No. | Weight | Brake Size | Overall Depth | Brake Surface Width | Pilot Diameter | Bolt Circle Diameter | Bolt Hole No. | Bolt Hole Size | GAWR |
| 03123788002 | 104 lbs | 16.50" x 7.00" | 10.54" | 7.46" | 8.78" | 11.25" | 10 | 1.08" | 23,000 |
| 85123788002 | 104 lbs | 16.50" x 7.00" | 10.54" | 7.46" | 8.78" | 11.25" | 10 | 1.08" | 23,000 |
| Standard Cast Brake Drum Specifications | | | | | | | | | |
| Cast Drum Part No. | Weight | Brake Size | Overall Depth | Brake Surface Width | Pilot Diameter | Bolt Circle Diameter | Bolt Hole No. | Bolt Hole Size | GAWR |
| 03123207002 | 114 lbs | 16.50" x 7.00" | 10.54" | 7.46" | 8.78" | 11.25" | 10 | 1.04" | 26,000 |
| 85123207002 | 114 lbs | 16.50" x 7.00" | 10.54" | 7.46" | 8.78" | 11.25" | 10 | 1.04" | 26,000 |
| Heavy/Severe Cast Brake Drum Specifications | | | | | | | | | |
| Cast Drum Part No. | Weight | Brake Size | Overall Depth | Brake Surface Width | Pilot Diameter | Bolt Circle Diameter | Bolt Hole No. | Bolt Hole Size | GAWR |
| 03123365002 | 122 lbs | 16.50" x 7.00" | 10.59" | 7.75" | 8.78" | 11.25" | 10 | .94" | 26,000 |
| 85123365002 | 122 lbs | 16.50" x 7.00" | 10.59" | 7.75" | 8.78" | 11.25" | 10 | .94" | 26,000 |
| 03123520002 | 118 lbs | 16.50" x 8.00" | 11.09" | 8.90" | 8.78" | 11.25" | 10 | .94" | 23,000 |
| 85123520002 | 118 lbs | 16.50" x 8.00" | 11.09" | 8.90" | 8.78" | 11.25" | 10 | .94" | 23,000 |
| 85123570002 | 126 lbs | 16.50" x 8.62" | 11.25" | 9.11" | 8.78" | 11.25" | 10 | .94" | 26,000 |



MERITOR STEEL SHELL BRAKE DRUMS.

Meritor steel shell drums deliver a premium lightweight package for lasting performance, durability and low maintenance when compared to cast drums. Its competitive advantage is a uniform one-piece roll-formed shell design combined with Meritor proven quality for enhanced durability. Meritor steel shell brake drums are tested using FMVSS 121 dynamometer specifications. Meritor's cold spin forming system ensures a uniform steel shell versus stamped designs.

Meritor STEELite™ and Opti-Lite™ brake drums deliver cost savings, while reducing weight 15% to 20% for truck and trailer applications versus standard cast drums. Combining proven strength and durability with weight savings, these drums deliver higher vehicle payloads and improved fuel economy. Meritor's comprehensive line of STEELite and Opti-Lite brake drums is proven to meet your aftermarket performance needs and budget. X30 drums are proudly formed, cast and machined in our Franklin, Kentucky facility.

Meritor STEELite X30 Drums.

- Genuine production drum designed, tested and manufactured to our highest level of specifications
- Premium corrosion protection for improved drum life
- Reduces vehicle weight by more than 200 lbs. in a tandem axle tractor/trailer combination
- Manufactured to our tightest tolerances and exacting OE specifications for superior ride and handling

Meritor Opti-Lite Drums.

- Made for the cost-conscious aftermarket customer who wants proven industry-leading performance at an economical price
- Standard drum corrosion protection
- Reduces vehicle weight by more than 200 lbs. in a tandem axle tractor/trailer combination

Meritor Steel Shell Brake Drum Specifications.

| STEELite Brake Drum Specifications | | | | | | | | | |
|-------------------------------------|---------|----------------|---------------|---------------------|----------------|----------------------|---------------|----------------|--------|
| Steel Drum Part No. | Weight | Brake Size | Overall Depth | Brake Surface Width | Pilot Diameter | Bolt Circle Diameter | Bolt Hole No. | Bolt Hole Size | GAWR |
| 53-123537-002 | 94 lbs | 16.50" x 7.00" | 10.38" | 7.87" | 8.78" | 11.25" | 10 | .94" | 23,000 |
| 53-123771-002 | 104 lbs | 16.50" x 8.62" | 11.16" | 9.07" | 8.78" | 11.25" | 10 | .94" | 23,000 |
| 53-123544-002 | 102 lbs | 16.50" x 8.63" | 11.04" | 9.15" | 8.78" | 11.25" | 10 | .94" | 23,000 |
| 53-123512-002 | 62 lbs | 15.00" x 4.00" | 8.64" | 4.92" | 8.78" | 11.25" | 10 | 1.28" | 13,200 |
| 53-123815-002 | 80 lbs | 16.50" x 5.00" | 9.23" | 5.83" | 8.78" | 11.25" | 10 | 1.28" | 14,600 |
| 53-123816-002 | 80 lbs | 16.50" x 5.00" | 8.80" | 6.08" | 8.78" | 11.25" | 10 | 1.28" | 14,600 |
| Opti-Lite Brake Drum Specifications | | | | | | | | | |
| Steel Drum Part No. | Weight | Brake Size | Overall Depth | Brake Surface Width | Pilot Diameter | Bolt Circle Diameter | Bolt Hole No. | Bolt Hole Size | GAWR |
| 50-123537-002 | 94 lbs | 16.50" x 7.00" | 10.38" | 7.87" | 8.78" | 11.25" | 10 | .94" | 23,000 |
| 50-123771-002 | 104 lbs | 16.50" x 8.62" | 11.16" | 9.07" | 8.78" | 11.25" | 10 | .94" | 23,000 |
| 50-123815-002 | 80 lbs | 16.50" x 5.00" | 9.23" | 5.83" | 8.78" | 11.25" | 10 | 1.28" | 14,600 |
| 50-123816-002 | 80 lbs | 16.50" x 6.00" | 8.80" | 6.08" | 8.78" | 11.25" | 10 | 1.28" | 14,600 |



Brake Drum Quick Reference Part Number Guide.

03 123 207 002

Prefix

03 – Unbalanced
85 – Balanced
50 – Opti-Lite
53 – STEELite X30

For Internal Meritor Use

Brake

Suffixes

002 – Domestic drum (except 788)
005 – Imported drum

| Brake | 537 | 365 | 570 | 207 | 520 | 222 | 788 ¹ |
|---------------|--------------------------|-----------------------|---------------------|---------------|---------------------|---------------|-----------------------|
| Description | Standard Duty | Severe Duty | Severe Duty | Standard Duty | Standard Duty | Standard Duty | Light Duty |
| Brake Size | 16.50" X 7" | 16.50" X 7" | 16.50" X 8.63" | 16.50" X 7" | 16.50" X 8" | 16.50" X 7" | 16.50" X 7" |
| Weight (lbs.) | 94 | 122 | 126 | 114 | 118 | 111 | 104 |
| Application | Over the Road/ Tanker | School Bus/ Refuse | Refuse | Over the Road | Refuse | Intermodal | Over the Road/Trailer |
| GAWR | 23,000 ¹ | 26,000 ² | 26,000 ² | 26,000 | 23,000 ³ | 23,000 | 23,000 |

¹ Weight conscious applications

² Heavy-stop applications

³ Medium-/heavy-stop applications

Most Popular Cast Drums Cross Reference.

| Meritor Part No. | Webb | Gunite | KIC |
|------------------|---------------|--------|-----------|
| 03122222002 | 67518F | 2983C | 52230-10 |
| 03122978002 | 66893F | 3166 | 52878-01 |
| 03123207002 | 66864F | 3600A | 60001-01 |
| 03123365002 | 66884F | 3576 | N/A |
| 03123520002 | 66800F | 3782 | 54269-01 |
| 03123788002 | 56864F | 3922 | N/A |
| 85123207002 | 66864B | 3600AX | 60001-018 |
| 85123365002 | 66884B | 3576X | 54261-018 |
| 85123382002 | 61528B | 3721AX | 54201-108 |
| 85123383002 | 65710B | 3710X | 54238-018 |
| 85123399002 | 65152B | 3687X | 54248-018 |
| 85123400002 | 65179B | N/A | N/A |
| 85123520002 | 66800B | 3782X | 54269-018 |
| 85123561002 | 66364B | N/A | 54258-018 |
| 85123570002 | 66854B/66855B | 3807X | 54229-018 |
| 85123788002 | 56864B | 3922X | 60000-018 |

Most Popular Steel Shell Drums Cross Reference.

| Meritor Part No. | KIC | MotorWheel (Stemco) |
|------------------|-----------|---------------------|
| 50123537002 | 80002-018 | 89996B/600084 |
| 50123771002 | 80008-018 | 600026/91482B |
| 50123815002 | N/A | 90600B |
| 50123816002 | 80005-018 | 600001 |
| 53123512002 | N/A | 90089BK |
| 53123537002 | 80002-018 | 89996B |
| 53123544002 | N/A | 91812B |
| 53123564002 | N/A | 87101B |
| 53123566002 | N/A | 88797B |
| 53123601002 | N/A | 91725B |
| 53123771002 | 80008-018 | 600026 |
| 53123815002 | N/A | 90600B |
| 53123816002 | 80005-018 | 600001 |

See PB-2006 or MeritorPartsXpress.com for an expanded drum cross reference.

You Deserve Complete Brake Drum Support.

Meritor brake drums are covered by our complete Meritor 1-Year aftermarket warranty.

And they're backed by comprehensive product information, specifying assistance, product training and technical support from our expert field sales force.

For the total service and support you deserve, call our Customer Care Center at (888) 725-9355. In Canada, call (800) 387-3889. Or simply visit MeritorPartsXpress.com.





Trademarks, brands, and names depicted herein are the property of Meritor, Inc. or its affiliates.



Meritor Heavy Vehicle Systems, LLC
7975 Dixie Highway
Florence, Kentucky 41042 USA

U.S. 888-725-9355
Canada 800-387-3889
MeritorPartsXpress.com
meritor.com

©2018 Meritor, Inc.
Litho in USA, SP-1853
Revised 8-19 (13028)