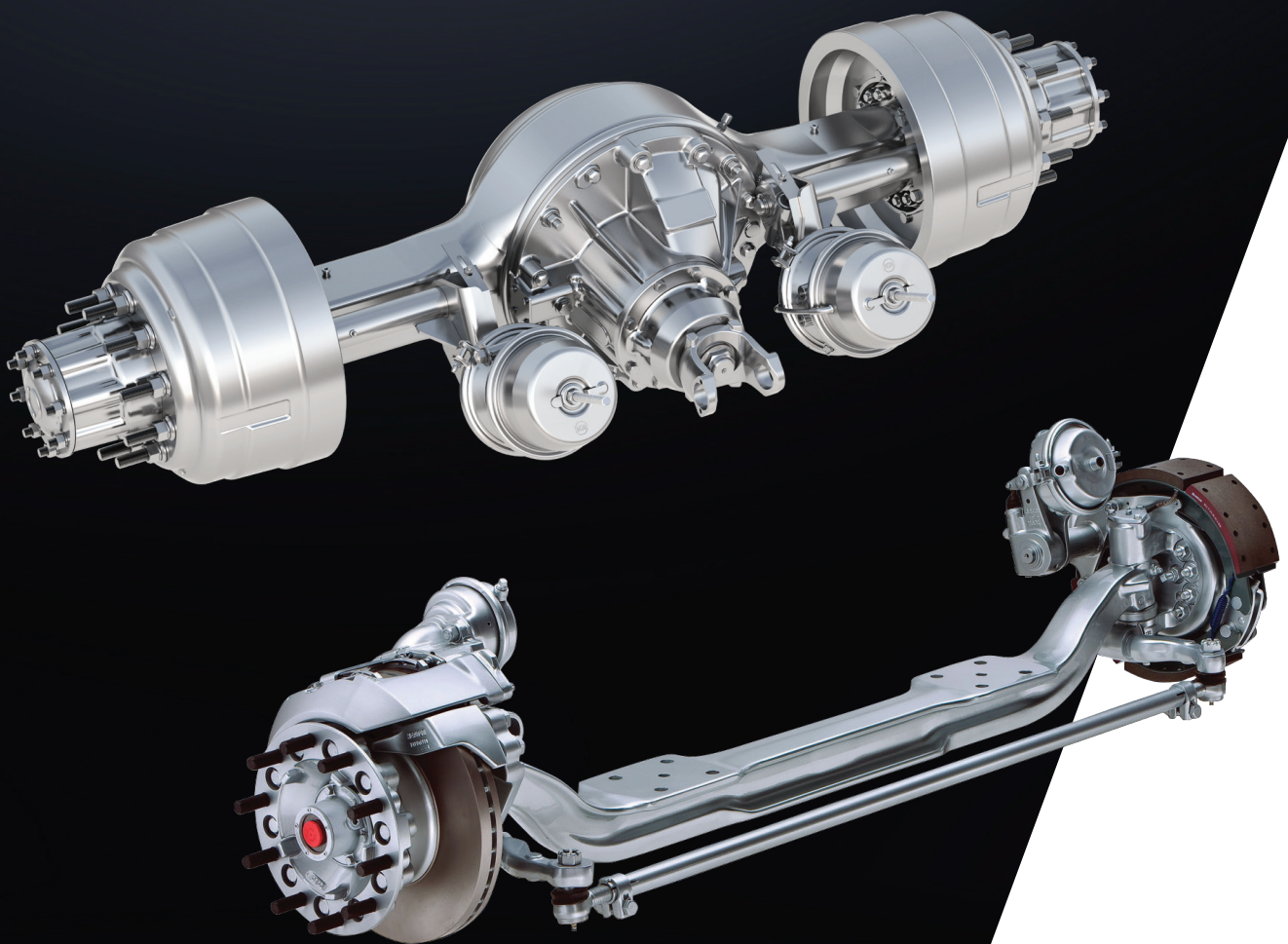


THE STRENGTH TO ANSWER THE CALL

FIRE AND RESCUE CAPABILITIES

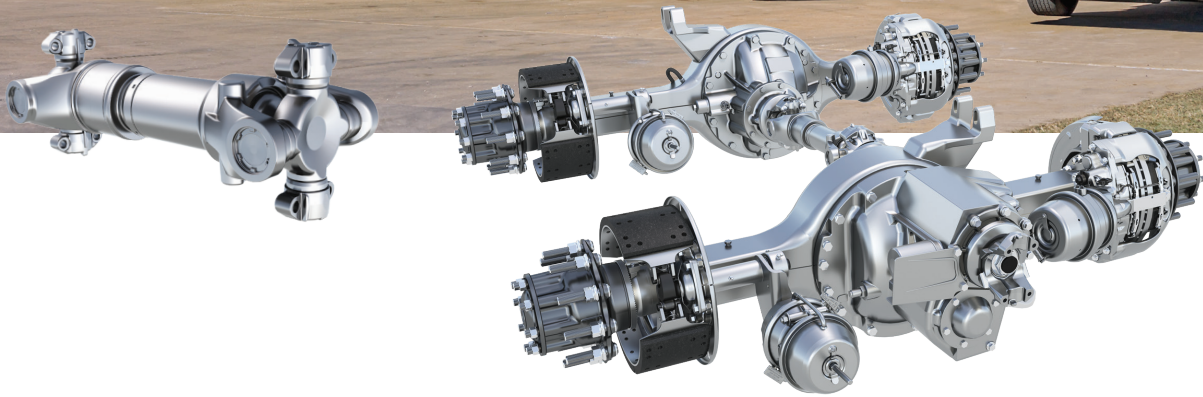


Meritor

**FOR
A WORLD
THAT'S
ALWAYS ON™**

PERFORMANCE MATTERS MOST IN EXTREME WORKING ENVIRONMENTS

No industry demands more of its equipment than the fire and rescue industry. And for more than 100 years, Cummins-Meritor has been engineering components specifically designed to maximize the success of fire and rescue missions.



DEMANDING REQUIREMENTS

Cummins-Meritor has long understood that fire and rescue vehicles require components specifically designed for maximum performance. Our fire and rescue components are made to handle the speed requirements, stop-and-go, hard braking and road conditions unique to the application.

Cummins-Meritor axles – front, single and tandem rear – are built on a rich heritage of product performance and engineering expertise. They are available in customized weight ratings for fire and rescue applications.

Similarly, Cummins-Meritor braking systems are available in a variety of sizes that are customized for optimum fire and rescue performance when paired with your axle package.

Our drivelines are designed to deliver reliability and durability, all while minimizing maintenance for fire and rescue operations.

THE RIGHT AXLE FOR THE RIGHT VEHICLE

Whatever the vehicle in your fire and rescue fleet, whatever its mileage obligations, whatever its payload requirements and whatever its working environment, Cummins-Meritor has the axle to meet your vehicle's performance demands.



FRONT AXLES

Cummins-Meritor offers front axle models with weight ratings from 16,000 to 23,000 pounds. All are available with either a Q+™ cam brake package or an EX+™ air disc brake package.

FRONT NON-DRIVE STEER AXLE SPECIFICATIONS

Ratings*	Axle model	Axle beam drop	King pin intersection (KPI)	Wheel-end series
16,000 lbs (7,264 kg)	MFS-16-143A-N	3.74 in (95 mm)	71.5 in (1,816 mm)	FL
18,000 lbs (8,165 kg)	MFS-18-133A-N		71 in (1,803 mm)	
20,000 lbs (9,080 kg)	FL-941	3.5 in (89 mm)	68.5 in (1,740 mm)	
	FL-943	5 in (127 mm)	68.8 in (1,748 mm)	
	MFS-20-133A-N*	3.74 in (95 mm)	71 in (1,803 mm)	

*Refer to publication TP7824 for complete axle specification details. Higher load ratings may be granted for specific axles based upon application review and customer integration studies/approvals. Contact your Cummins-Meritor sales representative for exact specifications for your application.

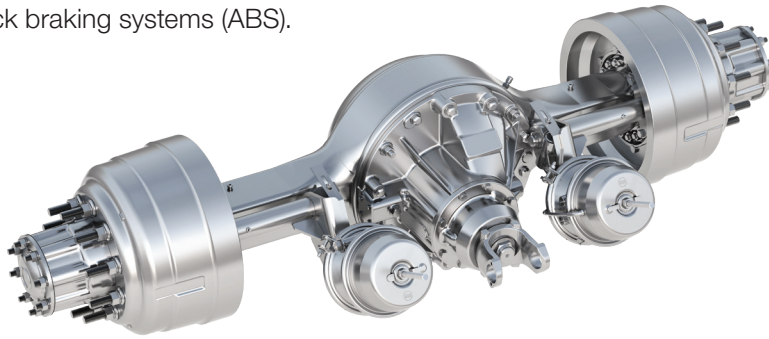
STRONG PERFORMANCE TO ANSWER THE CALL

SINGLE REAR AXLES

Cummins-Meritor offers single reduction rear drive axles for fire and rescue applications with gross axle weight ratings (GAWRs) of 23,000 to 35,000 pounds. The RS160 Series offers an available weight rating of 23,000 to 25,000 pounds, while the RS180 Series is available from 23,000 to 35,000 pounds. Both the RS160 and the RS180 are available with industry-leading Cummins-Meritor drum brakes while the RS160 can also be paired with the EX+™ air disc brake package. Each of these axles offer optional driver controlled differential lock (DCDL) and standard anti-lock braking systems (ABS).

RS-35-185 REAR DRIVE AXLE

The RS-35-185 single reduction rear drive axle is all about axle payload and strong performance. With a weight rating of 35,000 pounds and its stamped, steel-fabricated axle housing, it is built for demanding fire and rescue applications. In addition to its DCDL option, it offers standard and wide-track housing options, industry-familiar U Series wheel-ends and the proven RS180 Series differential carrier. It shares parts commonality and packaging envelope compatibility with the current Cummins-Meritor RS-30-185 axle.



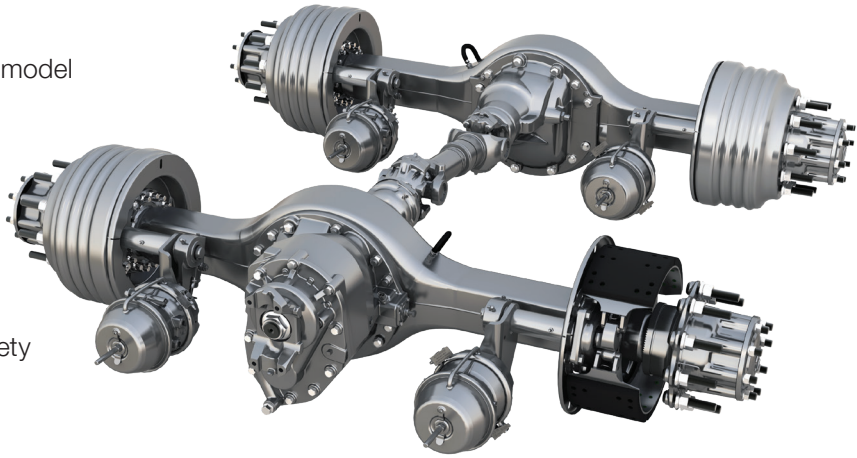
REAR HYPOID SINGLE-REDUCTION AXLE SPECIFICATIONS

Ratings*	Axle model	Standard ratios	Ring gear size (pitch diameter)	Axle shaft spline size	Axle shaft diameter	Housing box size	Wall thickness at spring seat	Wheel-end series
23,000 lbs (10,433 kg)	RS-23-160	2.50, 2.67, 2.80, 2.93, 3.07, 3.21, 3.42, 3.58, 3.73, 3.91, 4.10, 4.30, 4.56, 4.89, 5.38, 5.63, 6.14, 6.43, 6.83, 7.17	18 in (457 mm)	2.35 in (60 mm) 46 Teeth	2.25 in (57 mm)	5.25 in x 4.62 in (134 mm x 117 mm)	Standard track 0.5 in (13 mm) 0.63 in (16 mm) Wide track 0.63 in (16 mm)	R
	RS-23-186	4.30, 4.56, 4.89, 5.13, 5.38, 5.63, 5.86, 6.14, 6.83, 7.17, 7.83	19.62 in (498 mm)				0.5 in (13 mm)	
RS-25-160	2.50, 2.67, 2.80, 2.93, 3.07, 3.21, 3.42, 3.58, 3.73, 3.91, 4.10, 4.30, 4.56, 4.89, 5.38, 5.63, 6.14, 6.43, 6.83, 7.17	18 in (457 mm)	0.63 in (16 mm)					
26,000 lbs (11,793 kg)	RS-26-185	4.30, 4.56, 4.89, 5.13, 5.38, 5.63, 5.86, 6.14, 6.83, 7.17, 7.83	19.62 in (498 mm)			5.5 in x 5.5 in (140 mm x 140 mm)	0.56 in (14 mm)	T
30,000 lbs (13,620 kg)	RS-30-185	3.42, 3.58, 3.73, 3.91, 4.10, 4.30, 4.56, 4.89, 5.38, 5.63, 6.14, 6.83, 7.17, 7.83	19.62 in (498 mm)			0.56 in (14 mm)	U	
35,000 lbs (15,876 kg)	RS-35-185	3.42, 3.58, 3.73, 4.30, 4.56, 4.89, 5.13, 5.38, 5.63, 5.86, 6.14						

*Refer to publication TP7824 for complete axle specification details. Higher load ratings may be granted for specific axles based upon application review and customer integration studies/approvals. Contact your Cummins-Meritor sales representative for exact specifications for your application.

TANDEM REAR AXLES

Tandem rear axles are available in four model offerings (weight ratings): the RT145 (40,000-44,000 pounds), the RT160 (46,000-52,000 pounds), the RT185 (54,000-62,000 pounds) and the new, lightweight 14X (40,000-44,000 pounds). Cummins-Meritor tandem rear axles feature several options, including DCDL, a variety of custom braking solutions and ABS.



TANDEM HYPOID SINGLE-REDUCTION AXLE SPECIFICATIONS

Ratings*	Axle model	Standard ratios	Ring gear size (pitch diameter)	Axle shaft spline size	Axle shaft diameter	Housing box size	Wall thickness at spring seat	Wheel-end series
40,000 lbs (18,160 kg)	MT-40-14X/P	2.64, 3.08, 3.25, 3.36, 3.42, 3.55, 3.70, 3.90, 4.11, 4.33, 4.63, 4.88, 5.29, 5.86, 6.14, 6.43, 6.83, 7.17	15.31 in (389 mm)	2.1 in (53 mm) 41 teeth	1.88 in (48 mm) 2 in (51 mm)	5.25 in x 4.52 in (134 mm x 117 mm)	Standard/DualTrac 0.37 in (9.5 mm) 0.43 in (11 mm) 0.5 in (13 mm) Wide track 0.56 in (14.3 mm)	R
	RT-40-145A	2.64, 2.79, 2.93, 3.07, 3.21, 3.42, 3.58, 3.73, 3.90, 4.11, 4.33, 4.63, 4.88, 5.29, 5.86, 6.14, 6.43, 6.83, 7.17					Standard/DualTrac 0.37 in (9.5 mm) 0.43 in (11 mm) Wide track 0.56 in (14.3 mm)	
	RT-40-160	3.42, 3.58, 3.73, 3.91, 4.10, 4.30, 4.56, 4.89, 5.38, 5.63, 6.14, 6.43	18 in (457 mm)	2.35 in (60 mm) 46 Teeth	2.25 in (57 mm)		0.43 in (11 mm) Wide track only 0.63 in (16 mm)	
	RT-40-160P						0.43 in (11 mm) Wide track only 0.63 in (16 mm)	
44,000 lbs (19,976 kg)	MT-44-14X/P	3.70, 3.90, 4.11, 4.13, 4.63, 4.88, 5.29, 5.86 Available on hypoid ratios only	15.31 in (389 mm)	2.1 in (53.3 mm) 41 Teeth	2 in (51 mm)	5.25 in x 4.52 in (134 mm x 117 mm)	Standard track 0.5 in (13 mm) Wide track 0.56 in (14 mm)	R
46,000 lbs (20,884 kg)	RT-46-160P	3.42, 3.58, 3.73, 3.91, 4.10, 4.30, 4.56, 4.89, 5.38, 5.63, 6.14, 6.43, 6.83, 7.17	18 in (457.2 mm)	2.35 in (60 mm) 46 Teeth	2.25 in (57 mm)		Standard track 0.5 in (13 mm) 0.63 in (16 mm) Wide track 0.63 in (16 mm)	
52,000 lbs (23,608 kg)	RT-52-185	4.30, 4.56, 4.89, 5.38, 6.14, 6.83, 7.17	19.62 in (498 mm)				2.35 in (60 mm) 46 Teeth	
58,000 lbs (26,332 kg)	RT-58-185	3.73, 4.10, 4.30, 4.56, 4.89, 5.38, 6.14, 6.83, 7.17		5.5 in x 5.5 in (140 mm x 140 mm)	0.56 in (14 mm)	U		

*Refer to publication TP7824 for complete axle specification details. Higher load ratings may be granted for specific axles based upon application review and customer integration studies/approvals. Contact your Cummins-Meritor sales representative for exact specifications for your application.

ADVANCED BRAKING SOLUTIONS

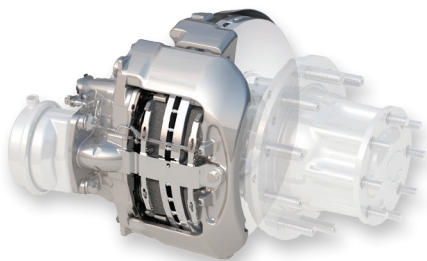


PREMIUM STOPPING PERFORMANCE

Cummins-Meritor understands that premium stopping performance is a must in fire and rescue, which often requires safe but aggressive driving at maximum payloads.

FOUNDATION BRAKING AT ITS BEST

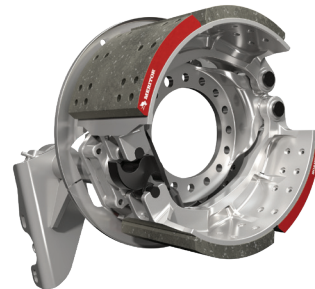
As an industry brake leader, you can expect an array of braking options to choose what's best suited for your application. Our Q+ drum brake is an industry standard, offering premium stopping performance and minimal maintenance. For high resistance to fade – in even the most severe conditions – the EX+™ air disc brake offers proven reliability in frequent-stop applications.



CUMMINS-MERITOR CAST+ CAM BRAKES

For fire and rescue vehicles, the Cummins-Meritor Cast+ cam brake offers added durability and reliability with a single-piece, cast shoe and thick, extended-life brake lining that provides exceptional resistance to heat related wear in heavy-duty applications. Available in 16.5-inch x 6-inch, 16.5-inch x 7-inch or the larger 16.5-inch x 8.625-inch sizes.

Whatever brake package best suits your axle and application, trust that Cummins-Meritor's heritage of braking performance in the fire and rescue industry ensures it's engineered for performance in demanding environments.



RELIABLE, LOW-MAINTENANCE DRIVELINES

PERMANENTLY LUBRICATED AND SEALED FOR LIFE

Cummins-Meritor has over 100 years of driveline engineering and manufacturing experience, with a large market share in new truck production and aftermarket. We offer a complete line of industry-leading drivelines and individual components, including U-joints, center bearings, yokes and more for the fire and rescue market.



PERMALUBE™ RPL SERIES DRIVELINES

The Cummins-Meritor Permalube RPL Series drivelines are the first in North America to be permanently lubricated and sealed for life to reduce costs associated with downtime for greasing and maintenance. RPL Series drivelines deliver the highest torque capacity for demanding fire and rescue applications and the nylon thrust washers eliminate metal-to-metal contact to prevent wear. The triple lip seals along with the protective steel guard provide the ultimate protection against contaminants for extended U-joint life.

RPL SERIES DRIVELINE SPECIFICATIONS

Model	Tubing outside diameter	Wall thickness	Tubing inner diameter	Swing diameter	Driveline rating
RPL20	4.095 in	0.18 in	3.735 in	7.8 in	12,000 lb-ft (16,270 n-m)
RPL25	4.59 in			9.1 in	17,200 lb-ft (23,020 n-m)
RPL25SD	4.69 in	0.23 in	4.23 in	8.11 in	18,500 lb-ft (25,083 n-m)
RPL35					21,500 lb-ft (29,150 n-m)
RPL35SD	5.204 in	0.236 in	4.732 in		25,820 lb-ft (35,000 n-m)



Cummins Inc.
Box 3005
Columbus, IN 47202-3005
U.S.A.

cummins.com

Trademarks, brands and names depicted herein are the property of Cummins Inc. and Meritor, Inc. or its affiliates.

SP-1226
Bulletin 6461169 Produced in U.S.A. Rev. 7/23
©2023 Meritor, Inc.