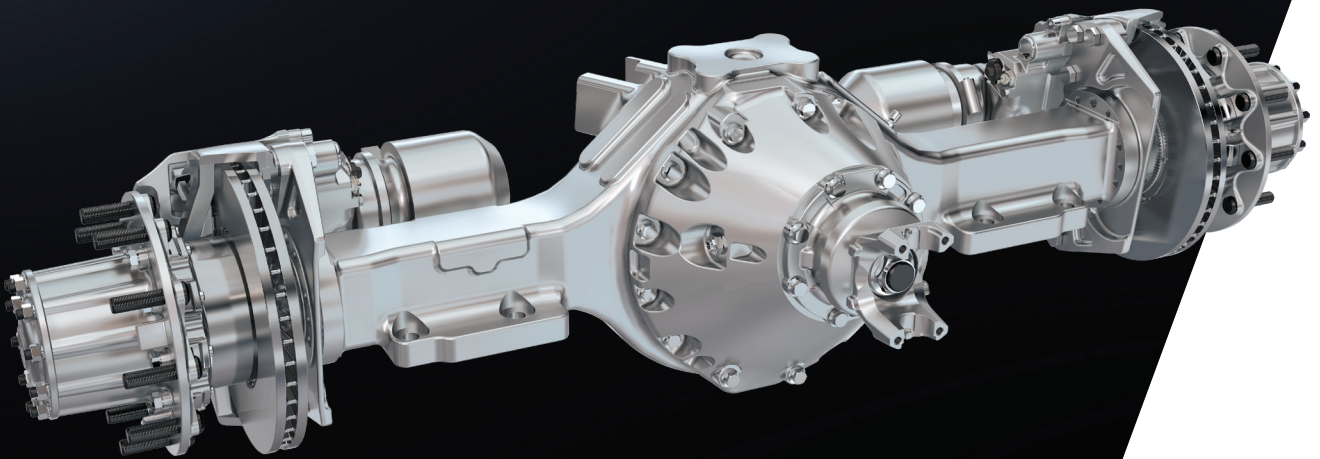


THE SMART ROUTE TO PERFORMANCE

TRANSIT BUS AND COACH AXLES



Meritor

**FOR
A WORLD
THAT'S
ALWAYS ON™**

THE INDUSTRY'S AXLE LEADER



With more than a century of axle-manufacturing experience, Cummins-Meritor is one of the world's largest independent manufacturers of commercial vehicle axles for a broad range of applications. In the North American transit bus and motorcoach markets, Cummins-Meritor has been a leading axle supplier for decades.

That's because we engineer outstanding reliability, unmatched durability and low cost of operation into every axle we make. Our specific axle solutions for the transit bus and motorcoach markets mean a more enjoyable and comfortable ride for passengers – and a real competitive edge for you.

We offer a full line of front steer, center, tag and rear drive axles that deliver the performance you demand – backed by the unequalled service and support you expect from a global axle leader.

TOTAL AXLE SOLUTIONS

With Cummins-Meritor, you know you're getting an axle solution that delivers the reliability, durability, ease-of-maintenance, economy and all-out performance your transit bus or motorcoach operation demands. But what's underneath your vehicle is only part of the story. You'll be equally pleased with what's behind it – world-class service and support.

Our representatives have the experience, expertise and global support network to provide the assistance you need to get the exact axle systems and components to maintain your competitive edge. With unmatched consultation and follow-through, we can provide you with the guidance needed to optimize your spec based on your vehicle operating environment and operational goals.

Every Cummins-Meritor axle comes with unsurpassed global service and support, with distribution centers strategically located to reduce downtime and provide timely and complete aftermarket support. In other words, everything you'd expect from an industry leader. For more information, call **866-668-7221** or visit **cummins.com**.

FRONT STEER AXLES

Cummins-Meritor offers the exact front steer axle your transit bus or motorcoach operation requires. Low-floor bus design? The Cummins-Meritor Easy Steer™ FH-946 deep drop front non-drive steer axle answers the call.

Ideal for 35-, 40- and 60-foot transit buses and motorcoaches, the FH-946 allows the bus floor to drop up to 20 inches (508 millimeters) below conventional bus designs – eliminating the need for steps and allowing easier passenger accessibility. Passengers also appreciate how the wide spring mountings maximize aisle width.

Here's what you'll appreciate: robust design features like i-beam construction that make Cummins-Meritor axles the industry standard in reliability, durability and performance.

FH-946 DEEP DROP FRONT NON-DRIVE STEER AXLE FEATURES AND BENEFITS

- Spring mounts are integral to the I-beam for simplified and flexible suspension bracket design.
- Easy steer king pin bushings and tapered roller thrust bearing permit easier steering.
- A 51-degree turn angle delivers outstanding maneuverability.
- The FH-946 front non-drive steer axle is available with either Cummins-Meritor Cast Plus™ cam brakes or EX+™ H severe service air disc brakes.
- Cummins-Meritor Cast Plus cam brakes offer added durability and reliability with a single-piece, cast shoe and extended-life brake linings that provide super resistance to heat-related wear.
- EX+ H severe service air disc brakes provide reduced stopping distance, lower maintenance and maximum corrosion protection.

FH-946 specifications

GAWR rating*

16,500 lbs (7.5 MT)

Brakes and sizes

Cast Plus cam brake
EX+ H air disc brake
16.5 in x 6 in (419 mm x 152 mm)

Hubs and drums bolt circle diameter

10-stud – 11.25 in (286 mm)
10-stud – 13.19 in (335 mm)

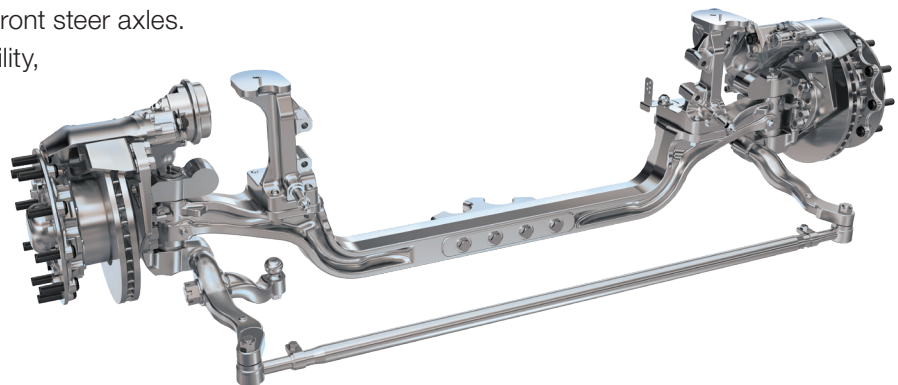
Turn angle

51°

MFS-12-155 AND FH-941 FRONT STEER AXLES

For standard floor buses and motorcoaches, Cummins-Meritor offers the MFS-12-155 and FH-941 front steer axles.

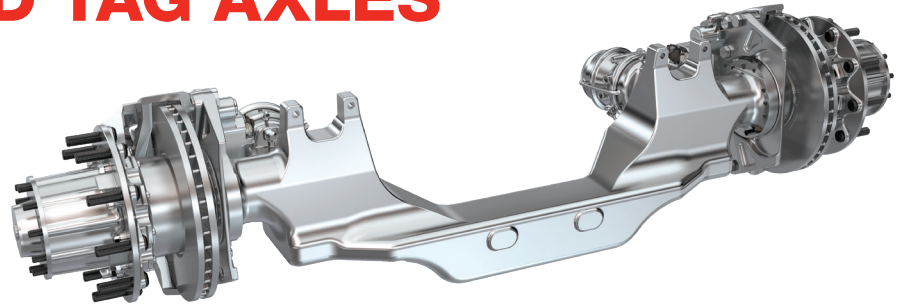
These axles deliver the same durability, performance, reliability and ease of maintenance that have made Cummins-Meritor axles an industry standard.



*Permitted uses of axles and components, including capacity ratings where stated, vary with application and service. Applications must be approved by the Cummins-Meritor specialty products and brake engineering departments. Approved ratings may be higher or lower than indicated, dependent upon review.

CENTER AND TAG AXLES

Whether you are building a transit bus or motorcoach, there's a high-performance Cummins-Meritor center or tag axle to meet your needs.



MC-26000 CENTER NON-DRIVE AXLE

For low-floor 60-foot articulated transit buses, the Cummins-Meritor MC-26000 center non-drive axle features a center drop, no-weld design with integral suspension brackets. The result: increased carrying capacity, comfortable passengers and a more profitable operation.

Brake options include Cummins-Meritor EX+ H air disc brakes and Cast Plus cam brakes featuring a single-piece cast shoe, extended-life brake linings and an integral return spring mount for unmatched durability, longer life, easy assembly, less maintenance and reduced downtime.

MC-14000 AND MC-16000 RIGID TAG AXLES

For motorcoaches, Cummins-Meritor also has a full lineup of tag axles specifically designed for these applications. The MC-14000 and MC-16000 rigid tag axles are custom-designed for the motorcoach market with integrated suspension connection points directly into the axle. They provide a GAWR from 14,000 to 16,000 pounds (6.4 to 7.3 tons) and offer both drum and EX+ H disc brake options.

FH-946 STEER TAG AXLE

If your motorcoach application requires a steerable tag axle, Cummins-Meritor offers the proven FH-946 steer axle that features the capacities and options your vehicles require.

MC-26000 specifications

GAWR rating*

16,000 lbs (7.5 MT)

Brakes and sizes

Cast Plus cam brake
EX+ H air disc brake
16.5 in x 6 in (419 mm x 152 mm)

Hubs and drums bolt circle diameter

10-stud – 11.25 in (286 mm)
10-stud – 13.19 in (335 mm)

Suspension mounting

Integral to center beam

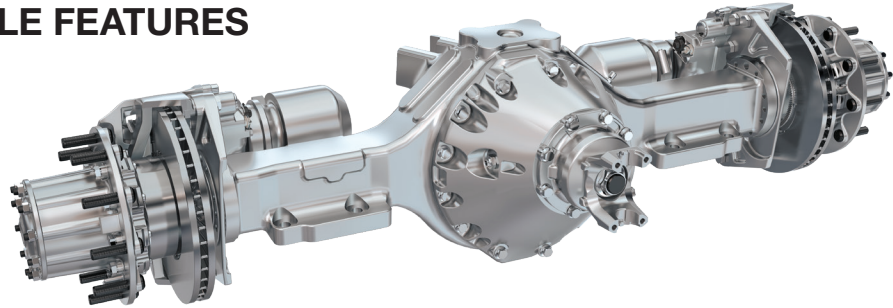


REAR DRIVE AXLES

The Cummins-Meritor 79000 series axle is the next-generation single reduction drive axle for 35- to 60-foot transit bus applications and motorcoach vehicles. Performance-engineered, it's the perfect choice for high stop-and-start duty cycles, demanding regenerative loads and periodic axle-overload applications.

79000 REAR DRIVE AXLE FEATURES AND BENEFITS

- 28,660-pound gross axle weight rating offers increased capacity for demanding transit bus and motorcoach applications
- More economical, efficient and lower weight than double reduction axles
- One-piece cast iron housing with integral suspension bracket pads and “bolt-on” torque rod brackets for extra strength and durability
- Uses the innovative and futuristic MS197 carrier featuring the most power dense gearing and robust bearings for handling the demanding duty cycle loads of transit/coach operations
- Bolted differential case and ring gear for easier and more efficient assembly and service
- Quiet Ride™ gearing provides a more relaxing ride experience
- Industry-leading Cast Plus s-cam brakes or EX+H air disc brakes come standard
- 5-year/unlimited-mile warranty based on application approval
- Robustness of the gearing and carrier makes product ideal for diesel, CNG, hybrid-electric and electric drivetrains.



79000 specifications

GAWR rating*

28,660 lbs (13 MT)

Ratios

4.56 - 6.14

Brakes and sizes

Cast Plus s-cam brake (standard)
16.5 in x 8.625 in
(419 mm x 219 mm)

EX+ H air disc brake (standard)

Hubs and drums bolt circle diameter

10-stud – 11.25 in (286 mm)
Cast Plus s-cam brake
(hub and stud pilot)
10-stud – 13.19 in (335 mm)
Cast Plus s-cam brake
(hub pilot only)

R160 SERIES REAR DRIVE AXLE

For smaller transit buses and motorcoaches, the Cummins-Meritor R160 series axle provides the same proven durability, performance, reliability and ease of maintenance that has made Cummins-Meritor axles an industry standard. The R160 axle for transit buses and coaches includes upgrades, such as Quiet Ride gearing that passenger-carrying services demand.



Vehicle models, brands and names depicted herein are the property of their respective owners and are not in any way associated with Cummins Inc., Meritor, Inc. or its affiliates.



Cummins Inc.
Box 3005
Columbus, IN 47202-3005
U.S.A.

cummins.com

SP-11149
Bulletin 6471723 Produced in U.S.A. Rev. 5/23
©2023 Meritor, Inc.