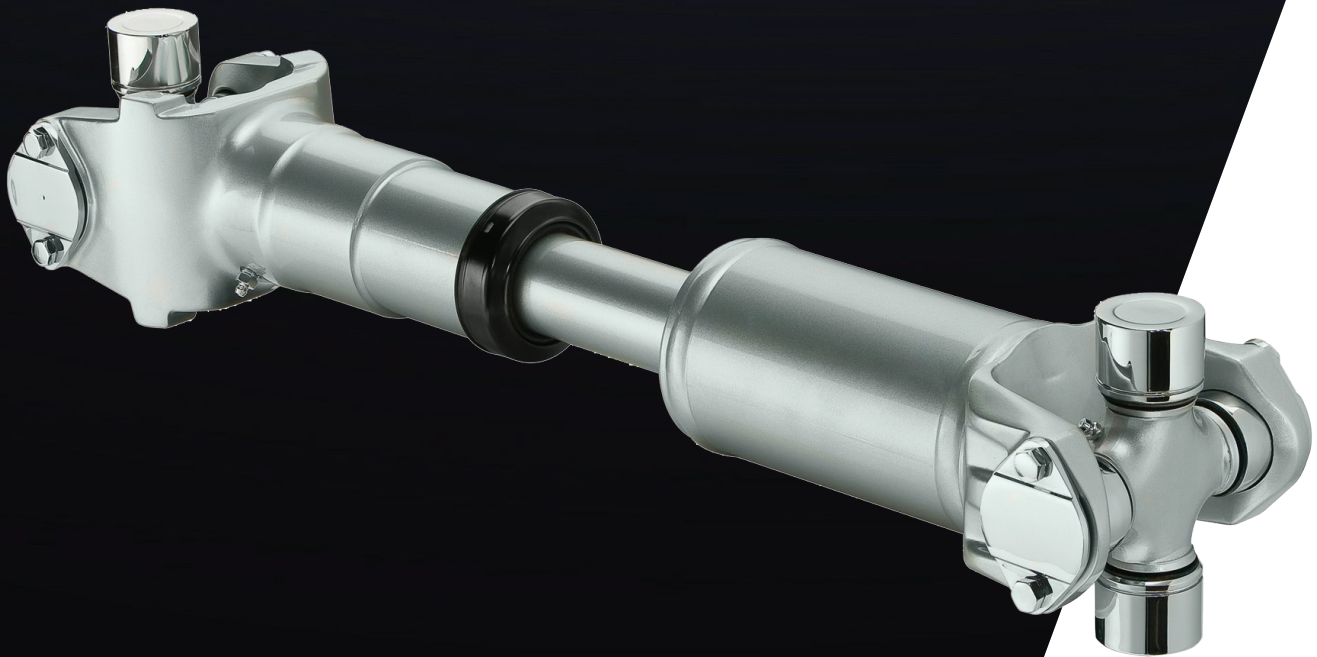


100,000-MILE LUBE INTERVALS*

CUMMINS-MERITOR XTENDED LUBE – MXL™ DRIVELINES

Available in popular sizes: 16, 17, 176 and 18 MXL with easy-service half-round connection points

MXL drivelines are the product of Cummins-Meritor's 110-plus years of developing driveline technology. Merging the robust features of the Cummins-Meritor RPL technologies, MXL drivelines feature extended lubrication intervals as well as advanced sealing technology and features that will maximize the life of your drivelines.



Meritor

**FOR
A WORLD
THAT'S
ALWAYS ON™**

COMPETITIVE ADVANTAGES OF EXTENDED LUBE – MXL DRIVELINES

FEATURES AND BENEFITS

- Tighter balance specifications reduce potential for vibration and ensure smooth operating performance
- Industry-standard RN/10 series end yokes provide complete interchangeability and are retrofitable in the aftermarket; Also available for half round easy-service yokes
- No special grease required – uses standard lithium-based lubricating grease
- Standard with Polyglide™ nylon coating which minimizes axial loads by reducing friction
- High-strength tubing provides consistent straightness for optimum performance
- Up to 3-year, 350,000-mile warranty for both linehaul and general service applications

ADVANCED SEALING

- Advanced sealing features include a field-proven nitrile seal design that ensures the lubrication is protected and guards against road contaminants and water intrusion
- Steel shroud and seal design more robust than competitive products
- Corrosion-resistant seal guard ensures reliable seal performance under all conditions, and protects and secures advanced slip seal improving durability over “booted” designs



EXTENDED LUBRICATION INTERVALS

- Lubrication intervals (linehaul applications) now up to 100,000 miles for slip section and U-joint, reducing operating and maintenance costs

MAXIMUM-LIFE U-JOINTS

- Nylon thrust washers eliminate metal-to-metal contact, preventing wear
- Superior U-joint sealing characteristics with triple lip seal and protective metal deflector
- Triple-lip seals on U-joint keeps grease in and contaminants out

SELF ALIGNING CENTER BEARING

- Standard on MXL
- Accommodates +/- 5 degree driveline angularity
- Robust bearing retention system provides superior clamping force and eliminates spinning cups
- Sealed bearing with integral deflector shield and grease barrier protects the bearing against contamination without the use of external deflectors



Extended lubrication specifications

Application	MXL 16	MXL 17-18
City	25,000 miles (40,000 km) or 6 months	25,000 miles (40,000 km) or 6 months
On-highway	25,000 miles (40,000 km) or 6 months	100,000 miles (160,000 km)
Linehaul	25,000 miles (40,000 km) or 6 months	100,000 miles (160,000 km)

*Inspection intervals may differ. See Cummins-Meritor driveline manual for details.

Vehicle models, brands and names depicted herein are the property of their respective owners and are not in any way associated with Cummins Inc., Meritor, Inc. or its affiliates.



Cummins Inc.
Box 3005
Columbus, IN 47202-3005
U.S.A.

cummins.com

SP-0976
Bulletin 6490540 Produced in U.S.A. Rev. 7/23
©2023 Meritor, Inc.