

MERITOR® TRAILER PRODUCTS



MERITOR



ADVANCED TRAILER SYSTEMS AND COMPONENTS

Leading The Global Trailer Industry For Over 60 Years

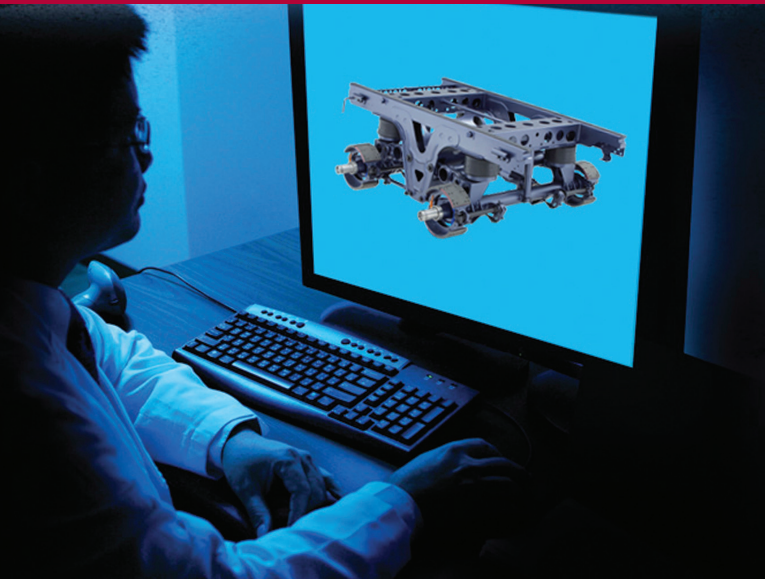
Meritor began designing and manufacturing groundbreaking trailer components back in 1930. Today we continue to set the pace for the industry with new product innovations. In North America alone, we have produced over ten million trailer axles, with a myriad of models and configurations for a broad range of trailer applications.

Meritor's heritage of over 100 years of "forward thinking" has produced unsurpassed leadership in the design, engineering and manufacturing of products for trailer applications. Plus, our advanced Meritor suspensions and systems continue to gain global market share.

With a significant global presence, we offer trailer solutions that benefit from the experience gained in diverse markets around the world.

Supporting a variety of applications, from dry freight vans to liquid tanks, bulk and refrigerated transporters to platform trailers, dump trailers to container chassis, our trailer applications continue to grow to meet the needs of our customers worldwide.





Meritor Trailer Products Engineering

Meritor's long-standing leadership in trailer products combines design innovation, product performance, customer service, and engineering expertise with component durability and lightweight materials.

An established goal of Meritor engineering has been to provide our customers with lightweight trailer products that maximize payload capacity and fuel economy. We also strive to design tractor and trailer brake parts for interchangeability to allow customers to reduce parts inventories and costs.



Global Quality Leadership

Meritor trailer products truly represent global manufacturing leadership. We've mastered the combination of leading-edge engineering, component durability and lightweight materials to make Meritor a leading trailer component supplier.

Our proven products incorporate technical expertise from around the globe. Meritor engineering capabilities and manufacturing facilities reach from Asia and the Pacific Rim to Australia to Europe to North America and South America. We are proud of our proven success in global platform design. Our manufacturing capabilities are supported by six Global Engineering Centers of Excellence, with an electronically linked infrastructure for knowledge sharing and process collaboration. All of our manufacturing facilities are fully supported by a global supply chain.

Meritor's trailer product manufacturing processes are subject to the most stringent quality controls (ISO 9001 and IATF 16949). From initial concept development to product launch, Meritor enforces Global Project Planning Process (GP3), whereby customer needs are analyzed to ensure that the necessary technical features and functions are integrated into every product. Through a process known as operator process control, machining tolerances and forming operations are individually checked by employees at virtually every stage in the manufacturing process.

Genuine OEM-Quality Aftermarket Parts

Meritor maintains a network of independent distributors and OEM truck and trailer dealers with genuine OEM-quality aftermarket parts. Made to exacting specifications, these parts ensure that original performance standards are met.

MERITOR TRAILER SUSPENSION FAMILY

RideSentry™ (trademark) Trailer Air Suspensions

RideSentry is a revolutionary improvement in trailer undercarriage technology providing superior vehicle control and a smoother, more stable ride for the operator. The RideSentry suspensions feature an integrated slider, trailer axles and brakes. The high-strength steel frame provides industry-leading durability and curbing damage resistance. The result is premium, performance with superior ride and handling, low maintenance and dramatically reduced cost of ownership.

RideSentry suspensions are available for all linehaul trailers. Our RideSentry tandem-axle trailer air suspensions feature PinLoc™ slider locking system, which allows for easy and secure slider repositioning and prevents operator error.

RideSentry Tandem-Axle Trailer Air Suspensions

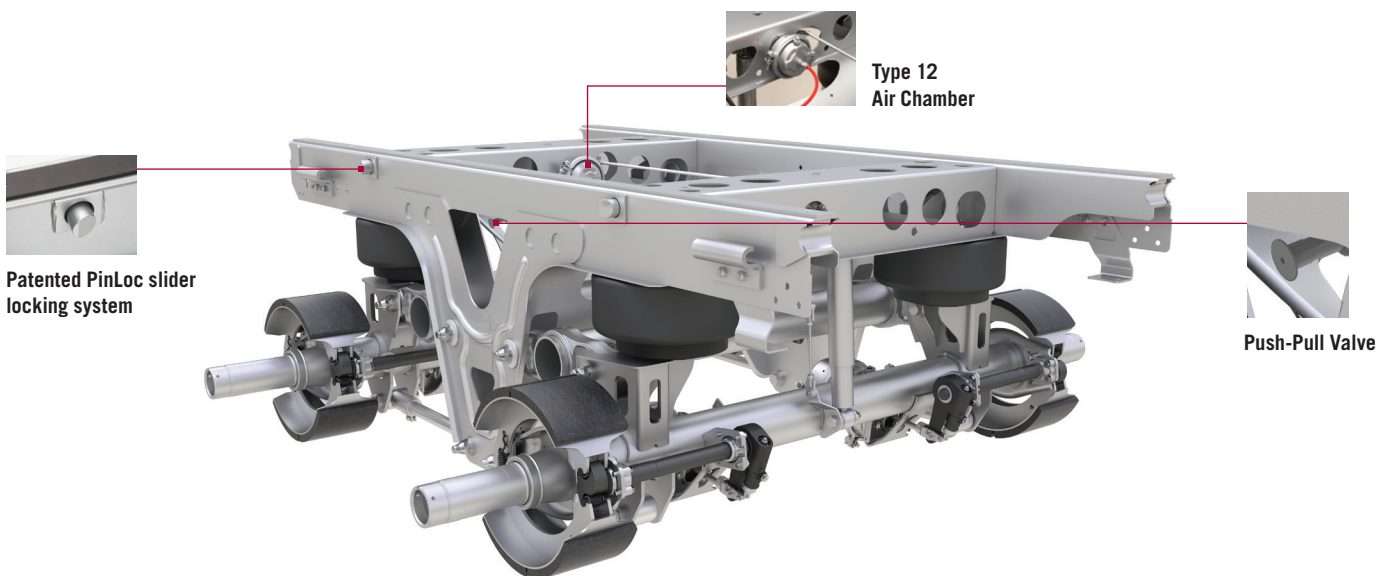
The RideSentry air suspension system with integrated slider, trailer axles and brakes is ideal for dry van and refrigerated van trailers. The advanced parallelogram suspension design integrates many components into a compact system for an exceptionally smooth and stable ride and better handling for longer trailer life. RideSentry also provides superior roll stability and resistance to curbing damage.

The RideSentry design eliminates many problems associated with traditional trailing arm suspensions. No dock-walk by design simplifies loading and unloading. Other features include premium bonded rubber bushings with steel thrust washers.

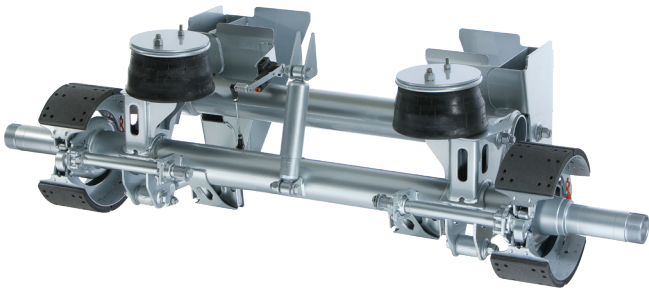
RideSentry Series Suspensions maximize payload gains and gets more done using less fuel. Better tire life is achieved through parallelogram design and heavy-duty shock absorbers that keep better tire-to-road contact.

Patented PinLoc™ Slider Locking System

The trucking industry has long needed a solution to safety and maintenance problems created by disengaged pins. The revolutionary PinLoc System helps to ensure locking-pin engagement through a combination of industry-exclusive angled locking pins, a parking brake interlock and a push button air assist that makes slider repositioning easy on drivers. PinLoc comes standard and provides true protection against slider and trailer damage. And it significantly reduces the risk of potential operator error due to disengaged pins.



The fuel savings described throughout this brochure are estimates only. Actual fuel savings may vary, and will depend on a variety of factors beyond Meritor Inc.'s control, including load, vehicle type, driver performance, distances traveled, vehicle speed, road conditions, etc.

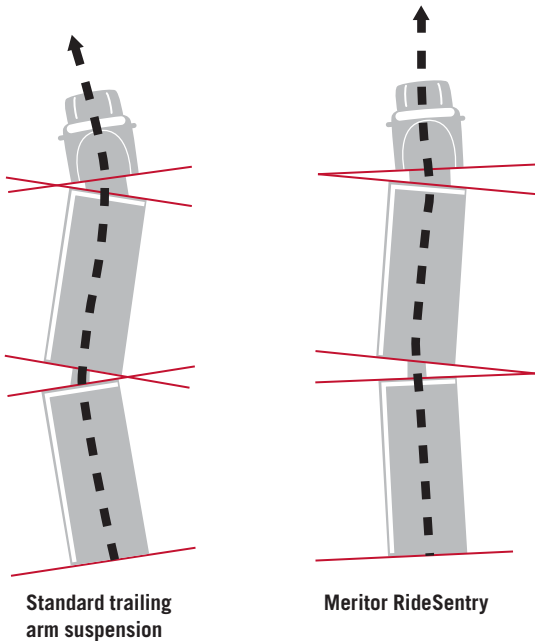


RideSentry Single-Axle Trailer Air Suspension

The innovative design that has made RideSentry sliding tandem air suspension the premier choice of the linehaul industry has now been brought to the less-than-truckload (LTL) segment. Since the LTL industry specifies shorter-length trailers and in many cases runs the trailers as doubles, we created a single-axle parallelogram suspension that is ideal for pups and converter dollies.

A key feature is no fore/aft axle movement during suspension articulation, which eliminates backslap and increases driver comfort and safety. Furthermore, roll-induced steer – a common trailing arm problem for combination vehicles – is also eliminated.

Effects of Roll-Induced Steer

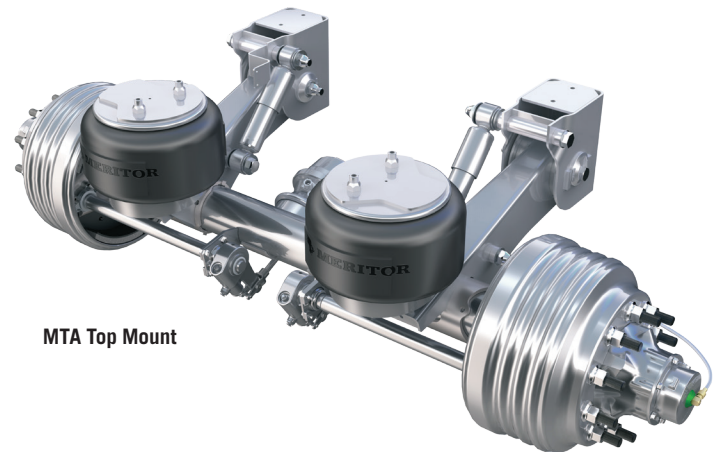


The RideSentry air suspension family provides unmatched roll stability. The patented parallelogram design places its air springs directly over the axles to provide an exceptionally smooth ride.

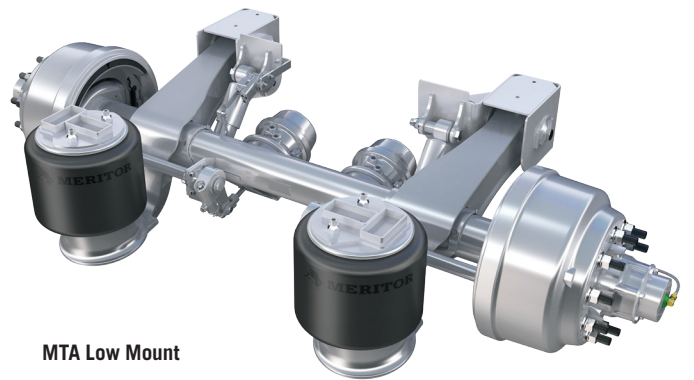
MTA™ Trailing Arm Suspension Family

The Meritor MTA Top Mount and Low Mount trailing arm air suspension portfolio delivers industry-leading ride, handling, tire life and durability. These hardworking trailer suspensions are designed for a full range of vocational applications from flatbeds to tanks to grain haulers.

With advanced patented technology like long-life pivot bushing, unique axle wrap design and high-damping shock absorbers, the MTA Series is the next word in air suspensions. With capacities ranging from 23,000 lbs to 30,000 lbs, the MTA Series is an integrated system that includes road-proven genuine Meritor axles and brakes and is backed by Meritor's unmatched service and support.



MTA Top Mount



MTA Low Mount

TRAILER AXLE SYSTEMS – SOLUTIONS FOR A WORLD OF TRAILER APPLICATIONS



Our most popular trailer axle models offer many advantages - they are lightweight, durable, and are easily serviceable due to:

- Lightweight integral spindles that are formed from the axle tube - contribute to exceptional strength and trueness of wheel-end alignment
- Bearing journals are induction hardened for added strength and wear resistance
- Stamped steel brake spiders offer an excellent strength-to-weight ratio
- Accurate wheel alignment due to robot welding of chamber and camshaft brackets

Meritor's easy-to-service bolt-on cam bushing is standard on our most popular axles, including the TN, TQ, and TP Series - which set the standard for lightweight heavy-duty trailer axles.

TN Series Axles

These economical, versatile axles are ideal for a wide range of applications. They feature integral spindles, induction-hardening of critical areas, and integral stamped spiders to save weight, add durability and increase your bottom-line performance. Cost efficiency is further enhanced with the Meritor Q+™ quick-change brakes.

TQ Series Axles

These are designed and built to handle the severe torsional forces produced by air-ride suspensions and increased downward force exerted by heavier-than-normal cargos. The TQ axle wall is thicker, enabling it to withstand the twisting stress caused by roll inputs from trailing arm air-ride suspensions.

TP Series Axles

The TP axle provides an ideal combination of Meritor quality and compatibility with the Fruehauf™/ProPar™ type wheel end to reduce parts inventories and accommodate the demands of wide-base single tires.

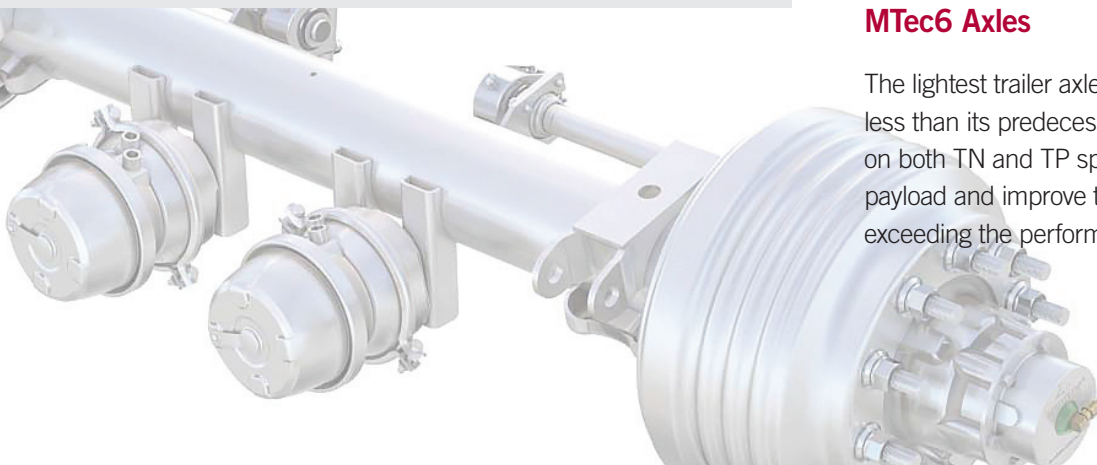
TP inner and outer axle bearings are the same size, and most brake parts are interchangeable with those featured on Meritor drive axles. This further simplifies service parts requirements and reduces costs for your fleet.

Specialty Axles

Includes crank and TR Series axles for trailer and tag applications with spindles and brakes to match tractor drive axles.

MTec6 Axles

The lightest trailer axle in the industry. Weighing 40 lbs less than its predecessor, this 6" diameter axle, available on both TN and TP spindles, was developed to maximize payload and improve tire wear while maintaining or exceeding the performance standard of 5" axles.

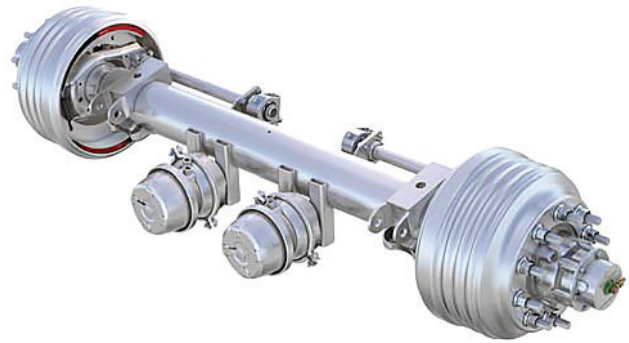




AxlePak™ Extended Warranty Packages

AxlePak wheel-end packages are assembled at Meritor's Frankfort, Kentucky, manufacturing facility, using precision automated assembly equipment and the highest quality standards. These packages are available in a wide range of options, including drum and disc brakes, automatic slack adjusters, and Meritor Tire Inflation System (MTIS™). AxlePak is available on all Meritor trailer suspensions and axles in the market. A variety of warranty coverages are available.

- Provide wheel-end system performance designed to keep your trailers on the road and out of the shop
- Deliver increased flexibility and reduced maintenance costs
- Meritor trailer axles and integrated axle/suspension products deliver proven performance, technology and value from the global axle leader.
- AxlePak combines high-performance components and precision assembly in a durable wheel-end system built for long life and dependable service to maximize your uptime.
- Backed by Meritor's extended warranty:
 - AxlePak7: 7 years parts and labor
 - AxlePak5: 5 years parts and labor
- Maximizes trailer uptime and efficiency while minimizing total life-cycle cost of ownership.



Dressed Axles – Including Hubs, Drums, Brakes And Bearings

Every Meritor trailer axle is available as a dressed axle for single-source quality and convenience. With these axles, all wheel-end components are either designed and manufactured by Meritor or built to Meritor's exacting specifications.

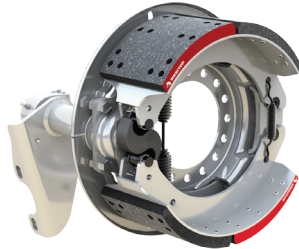
Dressed axles eliminate assembly time and warranty hassles for OEMs. You can choose from Meritor's exclusive Meritor Lite™ hub and Steellite X30™ drum design or from several alternative components.



BRAKING AND STABILITY ENHANCEMENT SYSTEMS

Q+™ Drum Brakes

Q+ cam brakes offer both performance and dependability. They feature spring-loaded seals for longer lubrication intervals and brake shoes that can be changed in less than two minutes. The Q+ design offers increased lining thickness for extended lining wear. For maximum lining life, specify brakes with increased lining volume and improved heat dissipation. Parts are interchangeable between the tractor and trailer for reduced parts inventories.



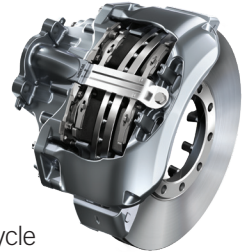
A wide range of sizes available to fit your applications: 16.5", 15" and 12.25".

Bolt-On Cam Bushing

Standard on axles equipped with drum brakes, this unique bolt-on cam bushing provides easy removal of the camshaft and bushing without having to remove the hub when used with outboard-mounted drums. The heavy-duty bushing is made with tough powdered metal, which reduces wear on the camshaft. Improved features include a removable press fit wear sleeve for easy replacement, 75% additional lubrication to the camshaft and reduced camshaft radial play.

EX+™ Air Disc Brakes

EX+ air disc brakes are ideal for a wide range of axle ratings. Increased pad volume delivers longer and more consistent performance throughout the life cycle of the vehicle, while a high power-to-rate ratio delivers maximum stopping performance. The gear synchronized design optimizes load distribution for better clamping and more even pad wear.



Quality Brake Linings

Meritor brake linings provide superior wear performance and very stable friction levels for optimum stopping capability. Linings are engineered and rigorously tested to ensure that their torque characteristics are optimized for specific applications, brake size, axle loads and tire sizes.



Meritor Lite™ Hubs

Our Lite hubs help to reduce trailer weight without sacrificing strength or durability. And reduced weight means increased payloads and fuel economy – a double bonus. Pound for pound, Meritor Lite hubs are as strong as and far more durable than aluminum hubs, which reduces maintenance and cost of ownership.



Meritor Automatic Slack Adjusters (ASAs)

As the leading supplier of automatic slack adjusters and foundation brakes in North America, Meritor understands their delicate relationship. In today's competitive climate, successful businesses need to reduce costs and increase productivity. The Meritor Automatic Slack Adjuster, proven in hundreds of billions of service miles, helps customers achieve these goals. The unique design keeps brakes in constant adjustment, reduces brake maintenance costs, reduces vehicle safety inspection citations, and allows for optimum brake performance. Meritor ASAs are designed for a variety of commercial vehicle applications and are available for steer, drive and trailer axles.



Meritor STEELite X30™ Brake Drums

Reduce trailer weight and increase payloads, revenue and fuel economy without sacrificing strength or durability. This drum's exclusive one-piece roll-formed steel shell delivers superior concentricity and better balance with no need for welded-on balancing weights. It features a proven, patented Machine-to-Balance process. With over two million on the road, Meritor STEELite X30 brake drums save over 300 pounds per tractor-trailer compared with full-cast drums*.



*TP trailer axle with STEELite X30™ drums and Q+™ brakes

MERITOR TIRE INFLATION SYSTEMS (MTIS™)

More than 80% of fleet tire problems are caused by improper inflation. Underinflation leads to higher fuel consumption, unnecessary tire wear, safety risks, downtime, higher maintenance costs and reduced fleet profits. One technology - Meritor Tire Inflation System - helps to eliminate all of these problems and more. Standard ThermALERT also helps to eliminate the dangers of wheel-end overheating that can cause serious safety and downtime issues.

MTIS – the market leader with over three million tires protected – maintains optimum tire pressure continuously for safety, maximum fuel economy, longer tire life, reduced maintenance and increased uptime. It can also maintain tire pressure to compensate for typical tread punctures and slow leaks until the driver can have repairs made – for hundreds of miles if necessary. Payback is fast – usually within one year – and it's easy to install on new and existing trailers.

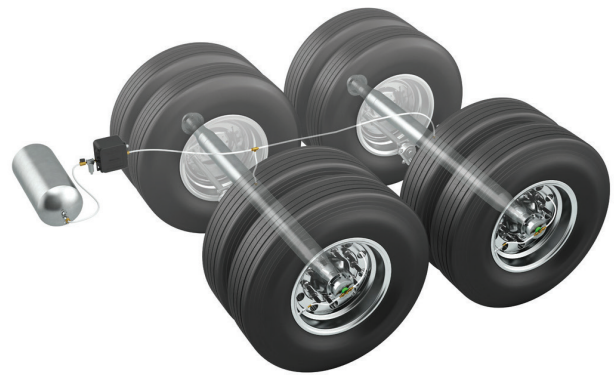
ThermALERT™

ThermALERT uses wheel-end heat-sensing technology to add high-temperature protection. ThermALERT helps alert drivers to take preventive action that avoids damage caused by elevated wheel-end temperatures. ThermALERT reduces vehicle downtime, risk and costs to keep your business moving ahead.

Optimized Cost Savings With The Meritor Tire Inflation System (MTIS)

MTIS provides significant cost savings that can improve the bottom line of any fleet operation.

Reduced tire wear, the elimination of frequent, costly pressure checks and fills, minimized downtime and replacement time, and improved fuel economy all contribute to optimized fleet equipment.





INDUSTRY-LEADING SUPPORT

To keep your business edge sharp, you need the right kind of support. It takes people with the technical expertise in trailers, plus the commitment to service and the resources to make it happen.

Meritor professionals provide unmatched consultation and follow-through to support your operation. Your trailer performance and your business performance deserve nothing less. That's where our people make the bottom-line difference for you.

Field Sales And Service

Meritor has four regional offices strategically located throughout North America with a world-class team of district sales and service managers to offer spec'ing assistance, service troubleshooting, warranty assistance, training and parts locating.

Customer Service Center

Meritor's OnTrac customer service center is ready to assist you at 866-668-7221. Representatives are trained to know every Meritor drivetrain component and provide you with a wide range of resources, including technical information, specification/parts inquiries, unit-down priority support, application inquiries and much more.



Global Customer Support And Aftermarket Support

All Meritor trailer products receive unsurpassed global service and support, with distribution centers strategically located to reduce downtime and provide timely and complete aftermarket support.

Our responsive aftermarket parts and distribution system is ready to deliver Meritor, Euclid R, Mach and all-makes service parts, and proven customer solutions.

Meritor Trailer Components Warranty Coverage

All Meritor trailer systems and components are backed by Meritor's industry-competitive warranty. Every claim is fully supported by our industry-leading online warranty claims system. For complete details, see meritor.com and download a copy of our current warranty brochure.

Meritor DriveForce™

DriveForce is Meritor's field support team handling your commercial vehicle needs: cradle to grave. It serves the North American market with a combination of sales, service and aftermarket representatives. With one of the broadest portfolios of commercial vehicle products, team members offer a total vehicle perspective, making them valued experts in the industry. DriveForce is experienced, equipped and positioned throughout North America to support customers in all facets of commercial vehicle operations. For more information visit meritor.com/driveforce.



Trademarks, brands, and names depicted herein are the property of Meritor, Inc or its affiliates.



Meritor Heavy Vehicle Systems, LLC
2135 West Maple Road
Troy, Michigan 48084 USA

For more information:
call Ontrac at 866-668-7221
or visit meritor.com

©2019 Meritor, Inc.
Litho in USA, SP-09173
Revised 04-19 (47865/11900)