

RELIABLE TIRE INFLATION TO KEEP YOU ROLLING

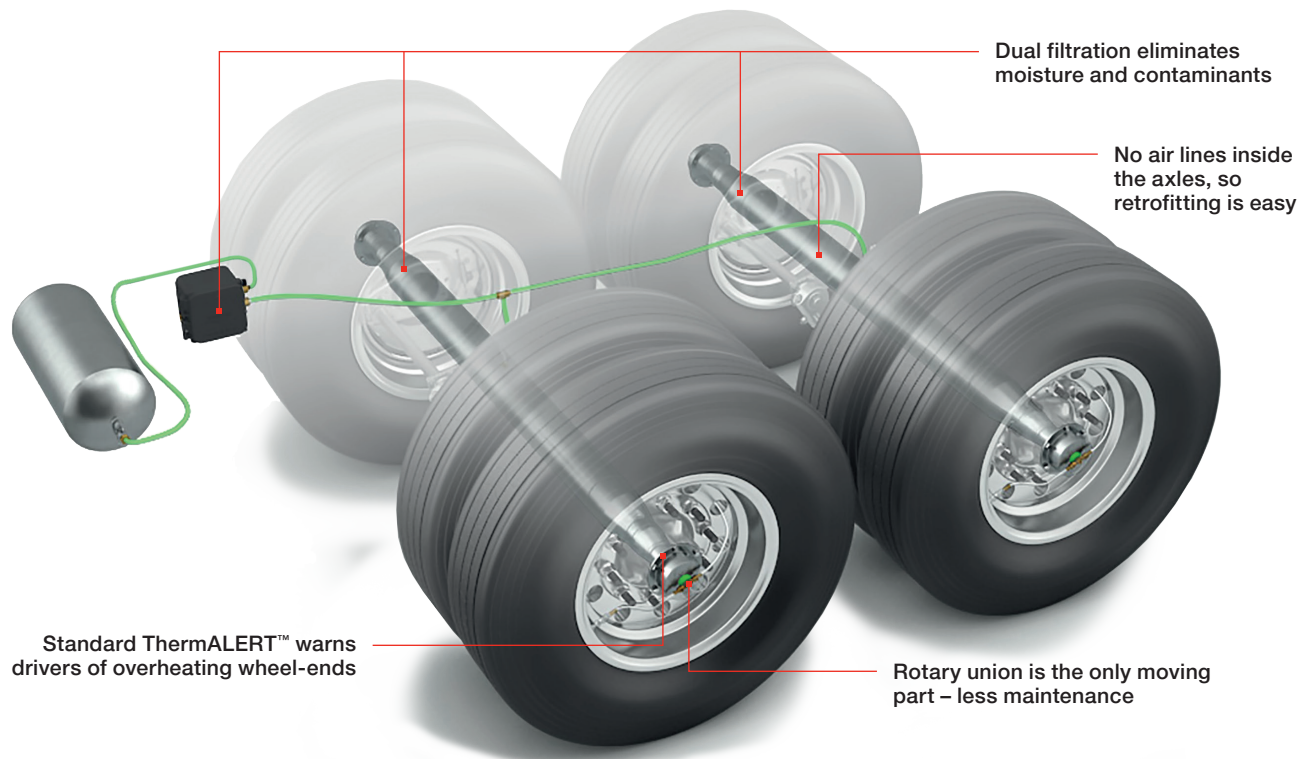
MERITOR® TIRE INFLATION SYSTEM (MTIS™)
WITH STANDARD THERMALERT™



Meritor

**FOR
A WORLD
THAT'S
ALWAYS ON™**

RELIABLE TIRE INFLATION TO KEEP YOU ROLLING



HOW MTIS WORKS

Air from the trailer air supply is routed to a central control box, then into each axle. The axles act as conduits to carry air through a rotary union assembly, which distributes air to each tire as needed. (Periodic inspection is required. See MTIS Maintenance Manual 14P.)

If you're in the business of hauling freight, you know that every penny counts. And smart managers know that they have to watch every mile, every gallon, every 1/32-inch of tread and every minute of downtime. Running on underinflated tires can be a major drain on all of these. Successful fleets use smart technology to help minimize their operating costs, which is why the Meritor Tire Inflation System (MTIS™) is spec'd on nearly one of every three trailers built today.

MTIS harnesses your trailer's existing air supply to keep your tires fully inflated when your vehicle is in operation, helping to save you money and adding profit to your bottom line.

Costs of underinflation:

- Reduced tire tread life
- Lower fuel economy
- Tread separation (blowout)
- Roadside service calls
- Inspection citations and fines

MERITOR TIRE INFLATION SYSTEM (MTIS) BENEFITS

MTIS FEATURES AND BENEFITS

■ Extends tire life

- Federal Motor Carrier Safety Administration (FMCSA) and U.S. Environmental Protection Agency (EPA) studies show a 10% longer tire life with tire inflation systems
- Underinflation negatively affects both new tires and retreads
- Continuous inflation prevents early retreading and reduces overall fleet tire costs
- Helps preserve tire casing for maximum retreading

■ Increases fuel economy

- Proper tire pressure means better fuel economy
- Proven 1.4% average improvement in fuel economy per vehicle based on a FMCSA real-world study on tire inflation systems

■ Decreases fleet maintenance costs

- Less time spent on manual pressure checking and filling
- Longer intervals between retreads

■ Provides over-the-road pressure maintenance

■ Improves safety

- Prevents underinflation, which is the leading cause of tire blowouts
- Reduces the risk of road accidents caused by underinflation
- Delivers real-time warnings of tire issues

■ Compatible with satellite communication services

■ Reduces roadside assistance calls

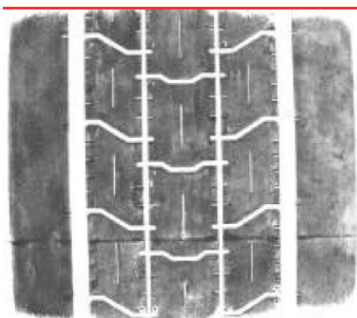
- In most cases, it keeps tires inflated until the driver reaches a maintenance location, which reduces service calls and unplanned downtime
- Reduces blowouts



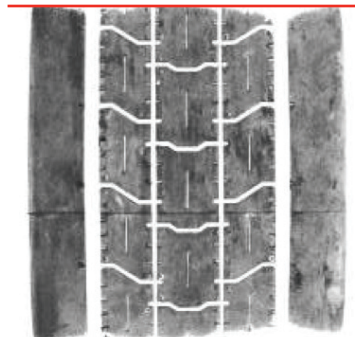
TIRE FOOTPRINT AT 100 PSI VS. 70 PSI

Tire footprint and rolling resistance increase as inflation pressure decreases. Fuel economy drops up to 3.8% if a tire is underinflated by 30 psi.

7 inches long at 100 psi
Optimum fuel economy



8 1/4 inches long at 70 psi
18% more rubber on
the road equals a 3.8%
decrease in fuel economy*



*Laboratory testing performed by Standards Testing Laboratories, Massillon, Ohio

INSTALL MTIS FOR IMMEDIATE SAVINGS

With MTIS, payback is possible within one year. It's such a smart investment that fleets across the country are spec'ing it on new trailers and retrofitting it on existing trailers. The fact that MTIS is easier to retrofit than other products makes installing the system a virtual no-brainer.

Even the most fuel-efficient tires will be affected if not properly inflated all the time. By continuously maintaining proper tire inflation, MTIS can deliver an average annual savings of \$1,960 per trailer.

AVERAGE ANNUAL COST SAVINGS PER TRAILER WITH MTIS

Tread wear¹	\$200
Maintenance²	\$200
Fuel³	\$930
Tire downtime/replacement⁴	\$630
TOTAL	\$1,960

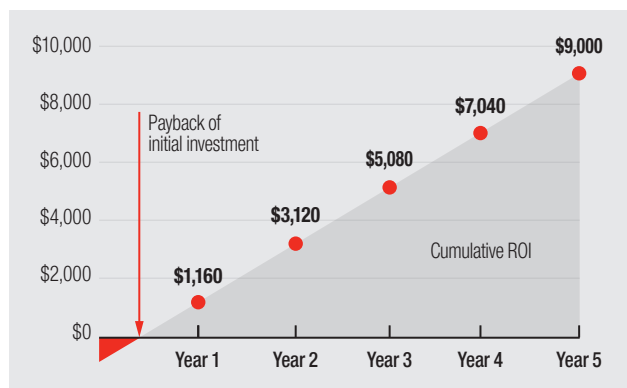
¹ Tread wear: Based on 10% extended tire life of eight tires traveling 100,000 miles per year and a tire cost of \$400 (average between small and large fleets).

² Maintenance: Based on 20 minutes twice per month spent checking and filling tires by a tire professional at \$25 per hour.

³ Fuel: Based on 1.4% annual savings, assuming 100,000 miles per year at 6 mpg and \$4 per gallon.

⁴ Tire downtime/replacement: Based on one service call over two years; Includes direct cost, downtime and a replacement tire.

LONG-TERM RETURN ON INVESTMENT



With more than 8 million fleet tires protected, and decades of proven performance, Meritor Tire Inflation System (MTIS) is known for its value and reliability.

THERMALERT DETECTS WHEEL-END OVERHEATING PROBLEMS

Elevated wheel-end temperatures can cause real problems for trailers out on the road. Left unchecked, overheated wheel-ends can result in costly downtime.

ThermALERT wheel-end heat-sensing technology immediately alerts drivers to overheating wheel-ends so that drivers can take preventive action to avoid damage. This increases vehicle, driver and public safety, and reduces vehicle downtime. ThermALERT is a simple standard feature that can pay big dividends.

THE ADVANTAGE FOR YOU

When you need continuous tire savings, don't miss any of these exclusive MTIS advantages:

- Automatic inflation system – not a passive monitoring system – that does not require driver intervention
- Easy to retrofit, since no air lines run through the axle
- Installation is fast, easy and inexpensive
- Low maintenance, with only one moving part
- Covered by 5-year/unlimited-mile parts and 1-year/unlimited-mile labor warranty; when specified with AxlePak7 wheel-end system, coverage on MTIS thru-tee and stator is 7-year/unlimited-mile parts and 1-year/unlimited-mile labor
- Backed by the Cummins-Meritor customer support team

MTIS is covered by one or more of the following U.S. Patents: 5,287,906; 5,584,949; 5,797,398; 5,797,979; 6,698,482; 5,377,736; 5,538,062; 5,868,881; 6,269,691; 6,435,238; 6,892,778.

Trademarks, brands and names depicted herein are the property of Meritor, Inc. or its affiliates.



Cummins Inc.
Box 3005
Columbus, IN 47202-3005
U.S.A.

cummins.com

SP-0668
Bulletin 6450529 Produced in U.S.A. Rev. 1/23
©2023 Meritor, Inc.