

# PERMANENTLY LUBRICATED AND READY FOR WORK

## PERMALUBE™ RPL SERIES DRIVELINES

Cummins-Meritor offers permanently lubricated driveline solutions to fit virtually any application, with a wide range of rated torque capacities and premium features.

 **UP TO \$600**  
IN LUBRICATION SAVINGS\*

### ADVANTAGES

- Permanently lubricated and sealed for life
- High torque-rated models available
- Extended U-joint life
- 5-year/500,000-mile linehaul warranty
- 4-year/400,000-mile general service warranty

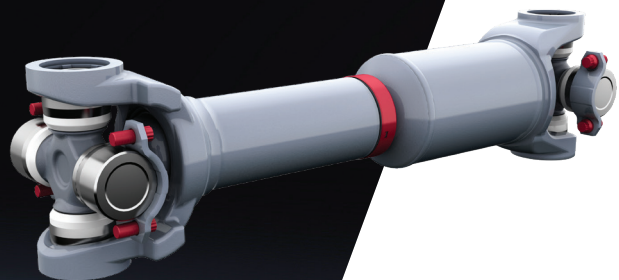
 **HIGH TORQUE CAPABLE**



*Permalube RPL25*



*Permalube RPL35*



*Permalube RPL10/14*



**Meritor**

**FOR A WORLD THAT'S ALWAYS ON™**

# FIRST IN PERMANENTLY LUBRICATED TECHNOLOGY

Cummins-Meritor Permalube™ RPL Series drivelines were the first in the North American heavy-duty commercial vehicle industry to be permanently lubricated and sealed for life. The advantage? Reduced operating and maintenance costs, industry-leading warranties, easy serviceability and extended U-joint life, particularly on gear-fast/run-slow drivetrains and higher torque applications.

## FEATURES AND BENEFITS

- High-torque-rated models available for demanding applications, including heavy service and downspeeding
- Four-bolt design for easy installation and service
- E-coated steel guard secures and protects the slip seal against contaminants and damage
- Extended U-joint life:
  - Triple lip seals provide the ultimate protection against contaminants
  - Nylon thrust washers eliminate metal-to-metal contact, preventing wear
- Self-aligning center bearing is standard
- Environmentally “green” because the need to grease the driveline is eliminated
- Partner with a leader – Cummins-Meritor has been the industry’s technology leader in drivetrain solutions for over 20 years



Real-life examples of high-mileage U-joints show virtually no wear.

## WARRANTY COVERAGE

Every claim is fully supported by OnTrac™. For details, call **866-668-7221 (OnTrac1)**.

## CUSTOMER SUPPORT

Every RPL Series driveline is backed by unsurpassed service and support, with DriveForce™ – Cummins-Meritor’s North American sales and service organization – and the OnTrac technical support center available to assist customers with solutions before, during and after the sale. For more information, call **866-668-7221 (OnTrac1)** or visit **cummins.com**.

## CUMMINS-MERITOR AFTERMARKET

Comprehensive parts availability with more than 6,500 dealer and distribution outlets across North America. For more information, visit **meritorpartsexpress.com**.

Specifications	RPL10	RPL14	RPL20	RPL25	RPL25SD	High-torque rated	
						RPL35	RPL35SD
<b>Tube size</b>	4 in. x .109 in.	4.095 in. x .18 in.	4.095 in. x 0.18 in.	4.59 in. x .18 in.	4.69 in. x .23 in.	4.69 in. x .23 in.	5.204 in. x .236 in.
<b>Tubing ID</b>	3.782 in.	3.735 in.	3.735 in.	4.23 in.	4.23 in.	4.23 in.	4.732 in.
<b>Swing diameter</b>	7 in.	7.8 in.	7.8 in.	9.1 in.	9.1 in.	8.11 in.	8.11 in.
<b>Driveline rating</b>	6,000 lb.-ft.	10,000 lb.-ft.	12,000 lb.-ft.	17,200 lb.-ft.	18,500 lb.-ft.	21,500 lb.-ft.	25,820 lb.-ft.
<b>Driveline rating</b>	8,135 n-m	13,558 n-m	16,270 n-m	23,320 n-m	25,083 n-m	29,150 n-m	35,000 n-m
<b>Application</b>	Main	Main/Inter-axle	Main/Inter-axle	Main/Inter-axle	Main	Main	Main



[cummins.com](http://cummins.com)

SP-0662  
Bulletin 6448645 Produced in U.S.A. Rev. 1/23  
©2023 Meritor, Inc.