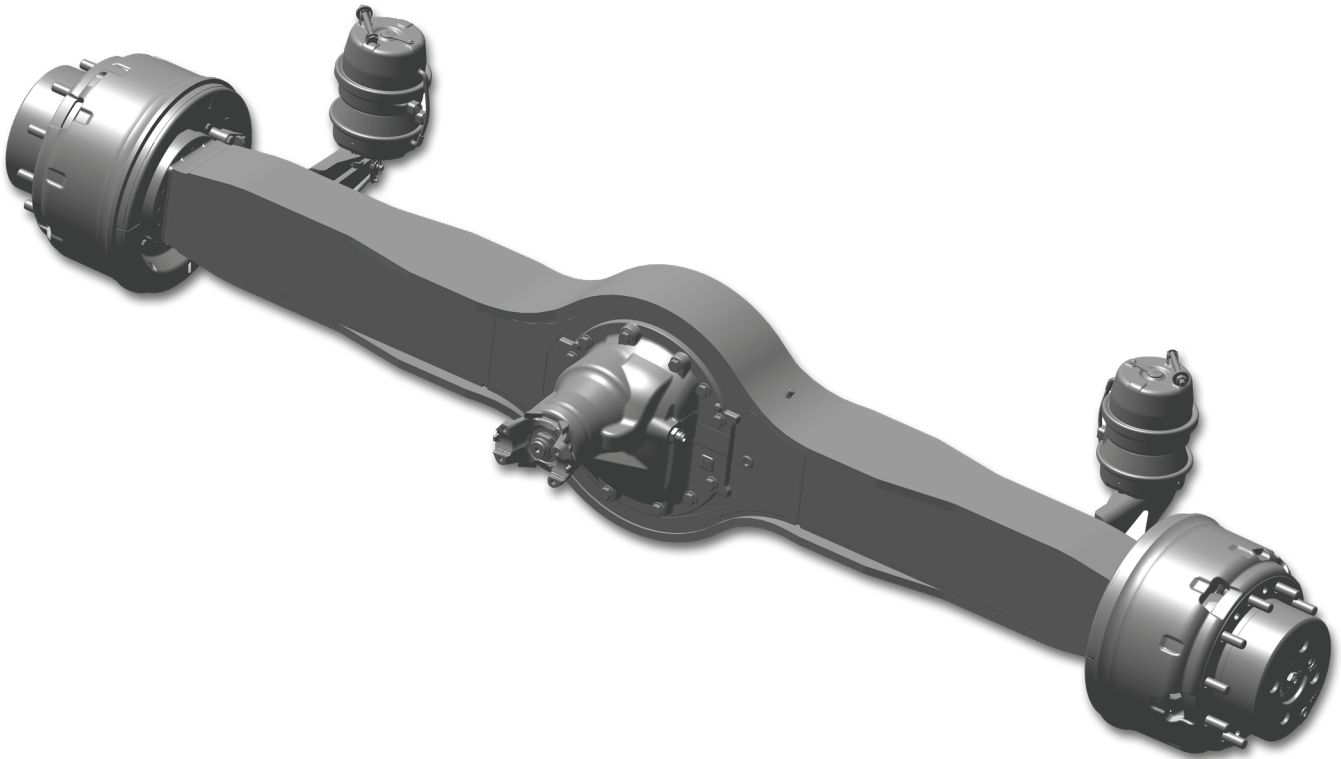
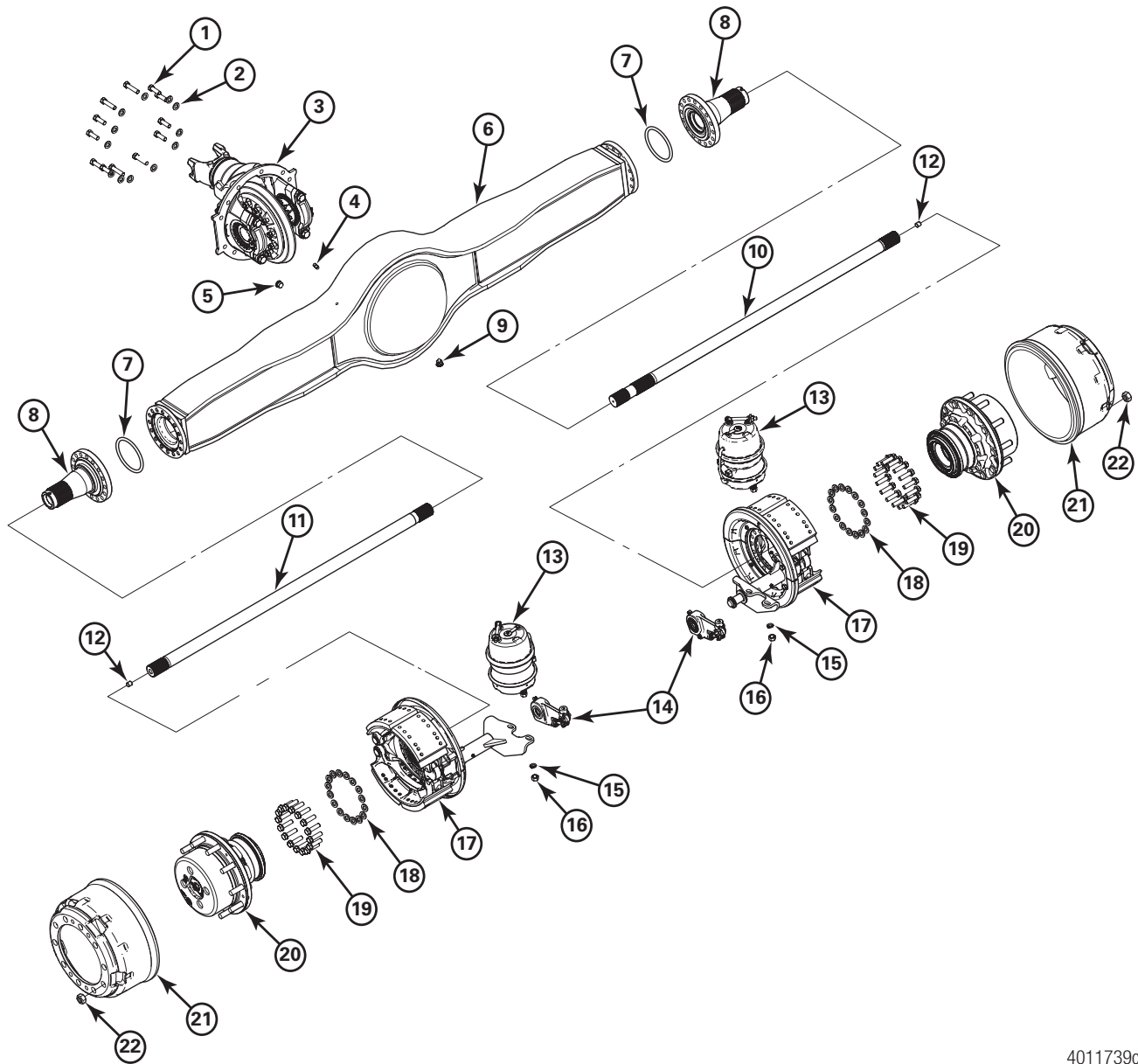


MRH2PW SINGLE TIRE HIGH SPEED DRIVE AXLE



MRH2PW SINGLE TIRE HIGH SPEED DRIVE AXLE

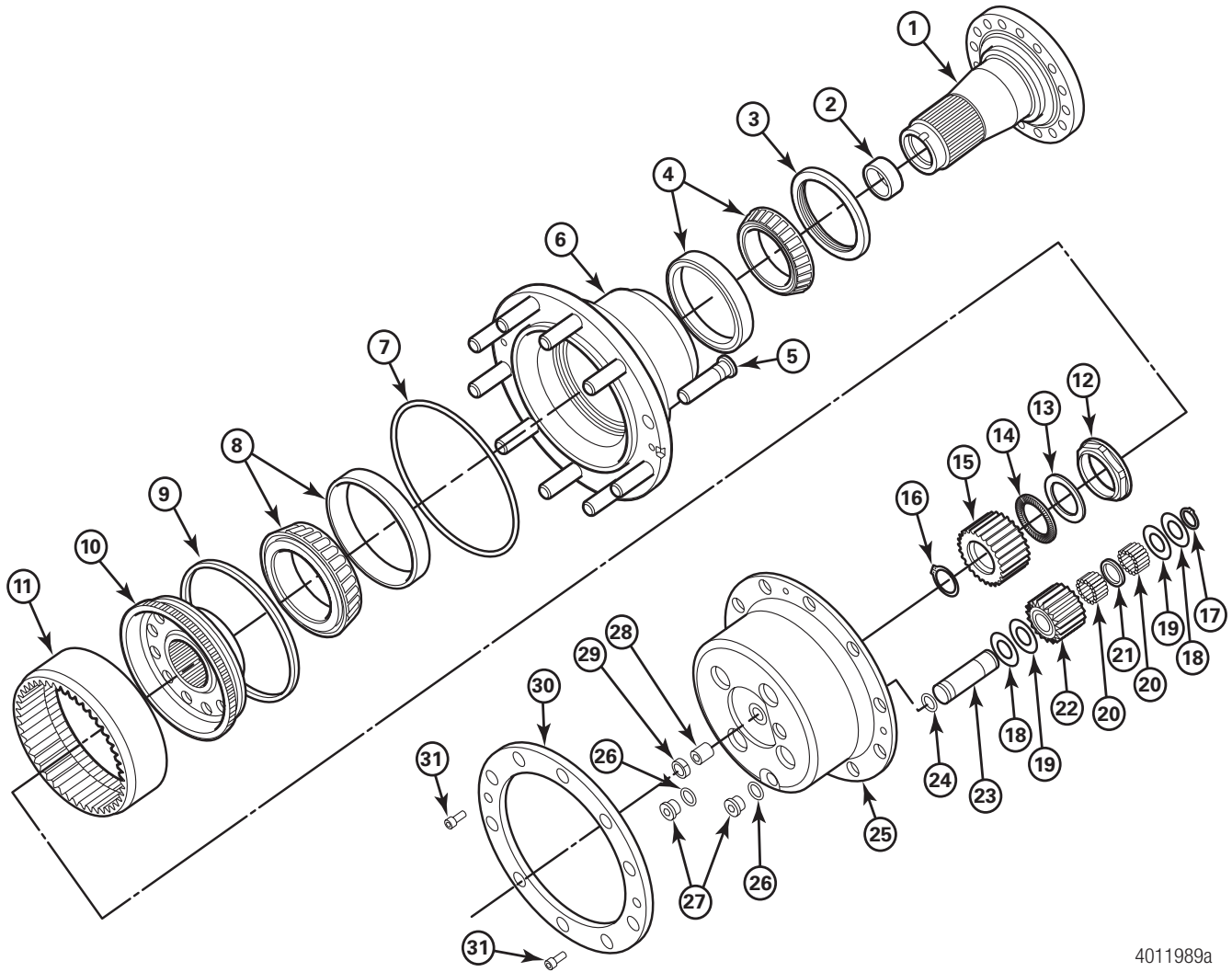


4011739c

MRH2PW SINGLE TIRE HIGH SPEED DRIVE AXLE

ITEM	PART NUMBER	DESCRIPTION	QUANTITY (PER AXLE)	REMARKS
1	MS-216050-N2	Carrier-to-Housing Bolt	8	M16x2.0 - 50 mm
	MS-216070-N2		4	M16x2.0 - 70 mm
2	MWA-516	Hardened Washer	12	M16
3	A5-3200G2217-XXX	Carrier	1	See Carrier Assembly Details
4	P-26	Plug (Breather Location)	1	Cust install A 1199-W-4053
5	981280	Oil Fill Plug	1	Non Magnetic
6	A1-3801-B-1770	Axle Housing Assembly	1	Fabricated
7	5X-1381	O-Ring (Spindle-to-Housing)	2	
8	3213-K-2169	Spindle	2	
9	981281	Oil Drain Plug	1	Magnetic
	949329	Sealing O-Ring	1	(Oil Plug, Fill/Drain)
10	3802-M-2145	Axle Shaft	1	RH
11	3802-L-2144	Axle Shaft	1	LH
12	Thrust Button	2297-Q-8779	2	
13	E21-3276-D-30	Brake Chamber Assembly	2	LH/RH MGM 3030TL3-3396
14	A6-3275-E-1149	Slack Adjuster	1	LH
	A6-3275-D-1148	Slack Adjuster	1	RH
15	1229-N-1626	Hardened Washer (Chamber Mount)	4	
16	N-310-I	Nut (Chamber Mount)	4	5/8-11"
17	See Brake Detail	Brake Assembly		16.5 x 6 Cast+
18	1229-W-1557	Hardened Washer	32	M16
19	MS-216060-A2	Bolt (Brake and Spindle-to-Housing)	32	M16x2.0 - 60 mm
20	See Wheel End	Wheel End (Planetary H2P Assembly)	2	
21	03-123802	Brake Drum	2	16.5x6"
22	08205976	Wheel Nut	20	M22x1.5

SINGLE TIRE H2 PLANETARY WHEEL END - REAR DRIVE AXLE

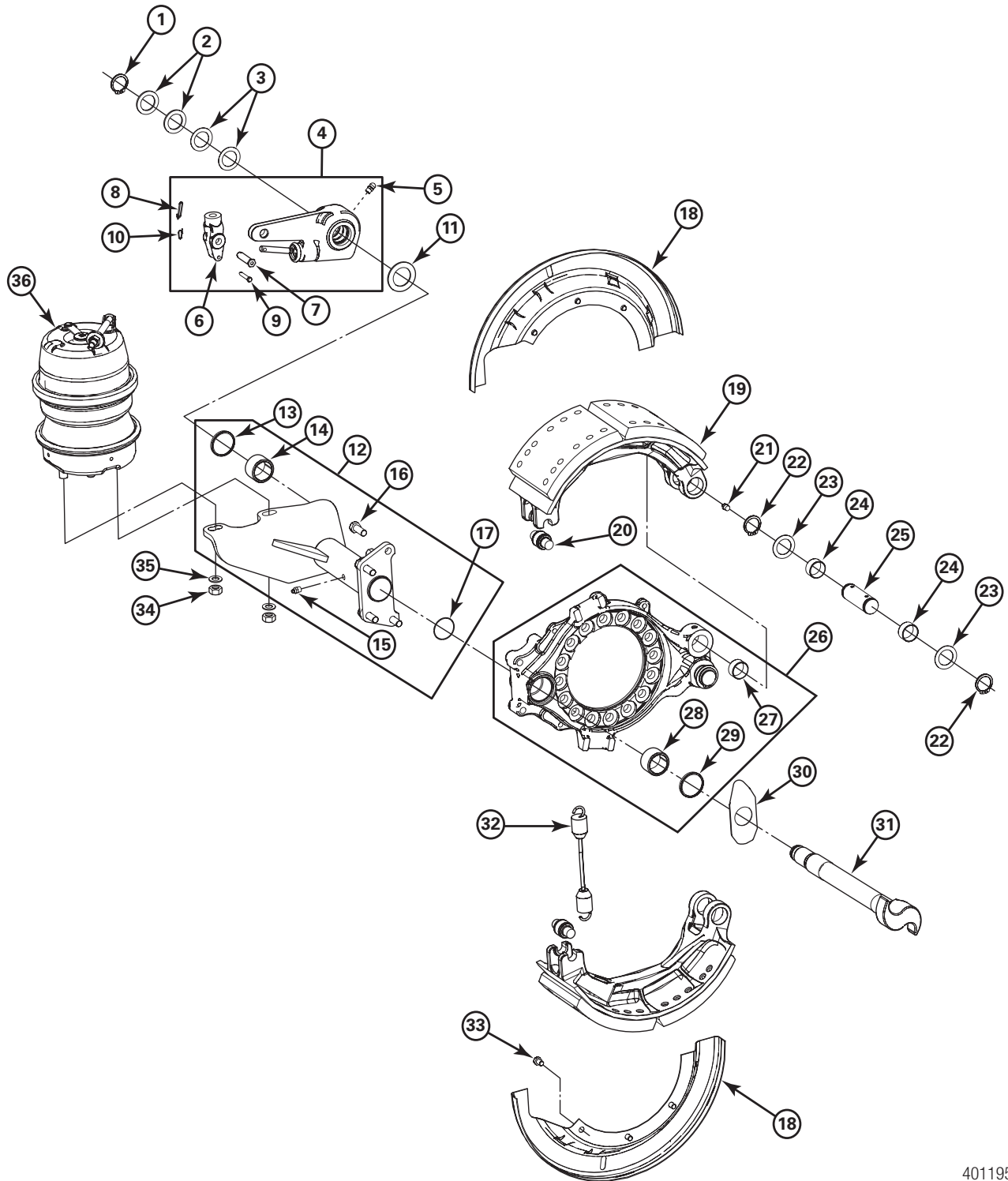


4011989a

SINGLE TIRE H2 PLANETARY WHEEL END – REAR DRIVE AXLE

ITEM	PART NUMBER	DESCRIPTION	QUANTITY (PER AXLE)	REMARKS
1	3213-K-2169	Spindle	2	Not Used
2	2245-J-1284	Sleeve	2	
3	A-1205-P-2798	Hub Oil Seal	2	
4	A1-1228-A-1795	Wheel Tapered Roller Bearing Set	2	Inner Set
	1228-A-1795	Cup #JM822010		
	A-1228-A-1795	Cone #JM822049		
5	09001989	Wheel Mount Stud	20	M22x1.5 RH Thread
6	A1-333-C-4761	Hub and Stud Assembly	2	Includes #5
7	982108	O-Ring (Planetary Carrier)	2	248 mm ID
8	A1-1228-B-1796	Wheel Tapered Roller Set Bearing	2	Outer Set
	1228-B-1796	Cup #Y32026		
	A-1228-B-1796	Cone #X32026		
9	1522392	Snap Ring (Ring Gear/Hub)	2	
10	3204-R-1110	Planetary Ring Gear Hub	2	
11	1522380	Planetary Ring Gear	2	
12	1227-S-1735	Spindle-Hub Nut	2	
13	1229-Z-5148	Thrust Washer (Sun Gear)	2	
14	A-1228-E-1799	Needle Bearing (Sun Gear Thrust)	2	
15	3892-A-5981	Sun Gear (Planetary)	2	
16	1229-A-5149	Snap Ring (Sun Gear/Axle Shaft)	2	
17-24	KIT E816	Pinion (Planetary Assembly)	8	
17	914463	Snap Ring (Planetary Pinion Shaft)	8	Shaft to Cover
18	1522390	Thrust Washer (Planet Pinion Outer)	16	Brass
19	1522389	Thrust Washer (Planet Pinion Inner)	16	Steel
20	1522387	Roller Bearing (Planet Pinion Needle)	304	
21	1522388	Roller Spacer (Planet Pinion Needle)	8	
22	1522381	Pinion (Planetary)	8	
23	1522386	Shaft (Planetary Pinion)	8	
24	949721	O-Ring (Planetary Pinion Shaft)	8	3x26.2 mm
25	3298-V-1244	Planetary Carrier (Cover)	2	
26	949329	Sealing O-Ring	2	(Oil Plug, Fill/Drain)
27	981280	Oil Plug	2	Non Magnetic
	981281	Oil Plug	2	Magnetic
28	10X-1785	Thrust Screw	2	
29	40X-1016	Jam (Thrust Screw) Nut	2	
30		Wheel Spacer (Disc Brake Only)		
31	959238	Bolt (Carrier to Hub)	2	M10x1.5-25 mm

MRH2PW BRAKE ASSEMBLY



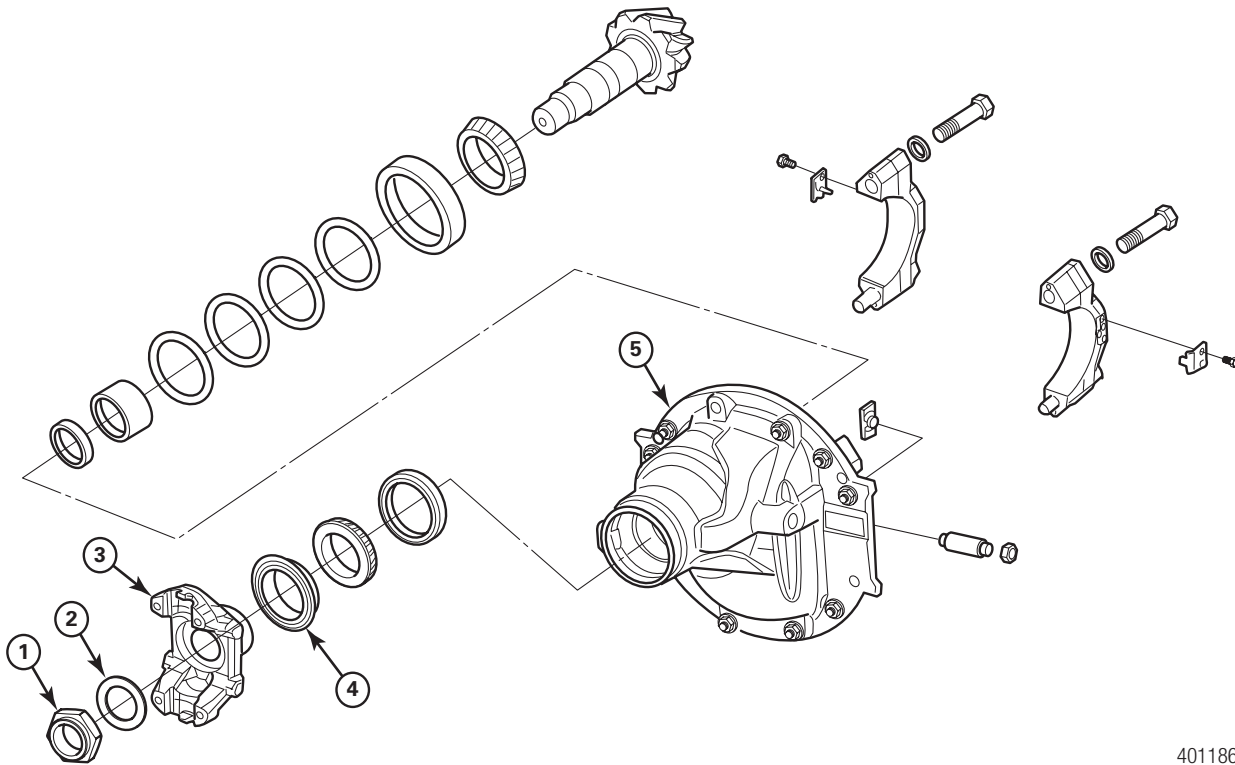
4011954a

MRH2PW BRAKE ASSEMBLY

ITEM	PART NUMBER	DESCRIPTION	QUANTITY (PER AXLE)	REMARKS
1	1229-D-2942	Snap Ring (Slack Retainer)	2	
2	1229-W-3117	Washer (Slack Adjuster) (Outer)	4	0.120" Thick
3	1229-J-3130	Washer (Slack Adjuster) (Outer)	4	0.030" Thick
4	A6-3275-E-1149	Slack Adjuster (Yellow Piston)	1	LH, inc. 5-10
	A6-3275-D-1148	Slack Adjuster	1	RH, inc. 5-10
5	1898-R-720	Zerk Grease Fitting (90°)	2	
6	1245-Z-1066	Clevis	2	LH and RH
7	19X-1116	Large Pin	2	1/2 x 1-7/32"
8	2257-D-1174	Retaining Clip (Large Pin)	2	
9	19X-127	Small Pin	2	1/4 x 1-37/64"
10	2257-C-1173	Retaining Pin (Small Pin)	2	
11	1229-H-4090	Washer (Slack Adjuster) (Inner)	2	0.104" Thick
12	Q2-3299-U-1555	Brake Chamber Support Bracket	1	LH, includes bushing and seals
	Q2-3299-T-1554	Brake Chamber Support Bracket	1	RH, includes bushing and seals
13	A-1205-V-1556	Brake Chamber Bracket Seal	2	seals
14	1225-H-1568	Bushing (Camshaft In Bracket)	2	
15	1199-N-1860	Zerk Grease Fitting	2	
16	S-2810-B2	Chamber Bracket-to-Spider Bolt	8	
17	1205-G-761	Bracket-to-Spider O-Ring	2	
18	3236-W-2701	Dust Shield	2	LH Front, RH Rear
	3236-X-2702	Dust Shield	2	RH Rear, LH Front
19	A11-3222-H-2296	Shoe and Lining Assembly (16.5 x 6 CP R301)	4	Inc. bushing
	A-3222-H-2296	Shoe Table Less Lining		
20	2297-Q-8233	Shoe Roller (Cam End)	4	
21	1199-N-1860	Zerk Grease Fitting	2	
22	1229-D-2942	Snap Ring (Shoe Anchor Pin)	8	
23	1229-B-1848	Washer (Shoe Anchor Pin)	8	
24	1225-U-1581	Pin Anchor Bushing	4	1.37 OD 1.25 ID x 0.68"
25	1229-K-1181	Shoe Anchor Pin	4	
26	A2-3211-L-7604	Brake Assembly Spider	2	LH/RH
27	1225-B-496	Shoe Anchor Pin Bushing	4	
28	1225-H-1568	Bushing (S-Cam In Spider)	2	Spider assembly inc. bushings and seal
29	A-1205-V-1556	Brake Chamber Bracket Seal	2	
30	1229-X-4860	Washer (Special Cam Head)	2	
31	2210-W-8343	Brake Camshaft	1	LH
	2210-X-8344	Brake Camshaft	1	RH
32	2258-Y-1273	Shoe Return Spring	2	
33	S-264-B	Shield Attachment Bolt	6	

ITEM	PART NUMBER	DESCRIPTION	QUANTITY (PER AXLE)	REMARKS
34	N-310-1	Nut	4	5/8-11 UNC
35	1229-N-1626	Hardened Washer	4	
36	E21-3276-D-30	Chamber Assembly	2	30/30

MRH2PW CARRIER ASSEMBLY



4011865a

ITEM	PART NUMBER	DESCRIPTION	QUANTITY (PER AXLE)	REMARKS
1	40X-1237	Yoke Nut	1	KIT-2637
2	1229-T-1736	Yoke Washer	1	KIT-2637
3	17TYS32-99A	Yoke	1	inc DEFR59-1 Deflector
4	R945009	Seal-Lube	1	
5	xx-3200H2270-xx	Carrier Assembly	1	See BOM

KITS

BRAKE RELINE KIT

AXLE	PART NUMBER	DESCRIPTION	QUANTITY (PER AXLE)
16-1/2" X 6"	A11-3222-H-2296	Shoe and Lining	4
	2258-Y-1273	Shoe Return Spring	2
	2297-Q-8233	Shoe Roller	4

BRAKE SERVICE KIT

AXLE	PART NUMBER	DESCRIPTION	QUANTITY (PER AXLE)
16-1/2" X 6"	1259-K-1181	Shoe Anchor Pin	4
	1225-B-496	In-Spider Bushing	8
	1229-B-1848	Pin Washer	8
	1229-D-2942	Snap Ring	8
	1199-N-1860	Zerk Grease Fitting	8

MERITOR AFTERMARKET PARTS WARRANTY

We warrant all new parts for one year from date of shipment to the buyer against defective material or workmanship (but not against damage caused by accident, abuse or improper installation, maintenance or repair) when such parts are used on vehicles the specifications of which have been approved by our Engineering Department.

As the exclusive remedy under this warranty, we will, at our option, repair or replace such parts free of charge, or take back the nonconforming parts and refund the monies paid by buyer for such parts, if found on examination by us to be nonconforming and if any necessary return charges are prepaid.

If it is necessary to return any parts under this warranty, buyer agrees not to make any deduction on account thereof from remittances on current accounts while claims are in the process of disposition. Any expense incurred without our consent for repairs or replacement will not be allowed.

THIS WARRANTY IS EXPRESSLY IN LIEU OF ALL OTHER WARRANTIES OR CONDITIONS, EXPRESS, IMPLIED OR STATUTORY, INCLUDING ANY IMPLIED WARRANTY OF MERCHANTABILITY OR FITNESS FOR PARTICULAR PURPOSE. IN NO EVENT SHALL SELLER BE LIABLE FOR INCIDENTAL OR CONSEQUENTIAL DAMAGES OF ANY NATURE.

Only genuine Meritor replacement parts are covered by this aftermarket parts warranty.

Information contained in this publication is in effect at the time the publication was approved for printing and is subject to change without notice or liability. Meritor Heavy Vehicle Systems, LLC, reserves the right to revise the information presented or discontinue the production of parts described at any time



Meritor Heavy Vehicle Systems, LLC
7975 Dixie Highway
Florence, Kentucky 41042 USA

Call 1-888-725-9355
or visit meritor.com

©2022 Meritor, Inc.
Litho in USA, PB-15105
Revised 02-22 (16579)