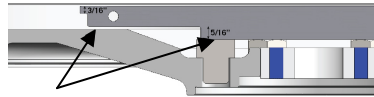


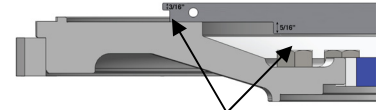
Using Your Flywheel Gauge



5/16 Gauge



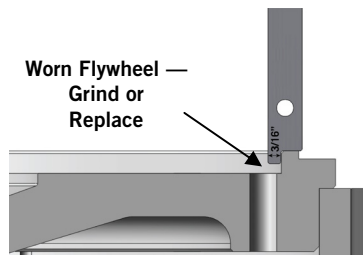
Worn Flywheel — Must Replace



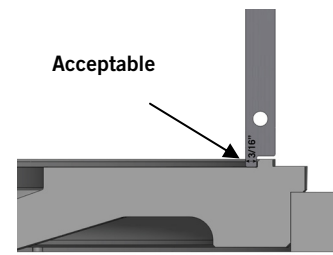
Acceptable

With the flywheel mounting bolts installed, place gauge on the friction surface of the flywheel with the 5/16" step over the mounting bolts. If the 5/16" step contacts the head of the mounting bolts, the flywheel is too thin. Replace flywheel.

3/16 Gauge



Worn Flywheel —
Grind or
Replace

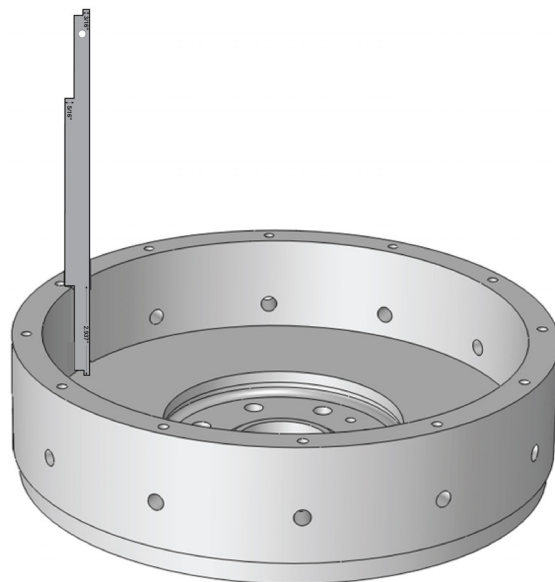


Acceptable

Place gauge on end of flywheel near clutch mounting hole with 3/16" step over clutch centering lip. If the clutch centering lip contacts gauge, the lip is too tall and will not allow proper installation. Replace flywheel

Potted Flywheel Depth

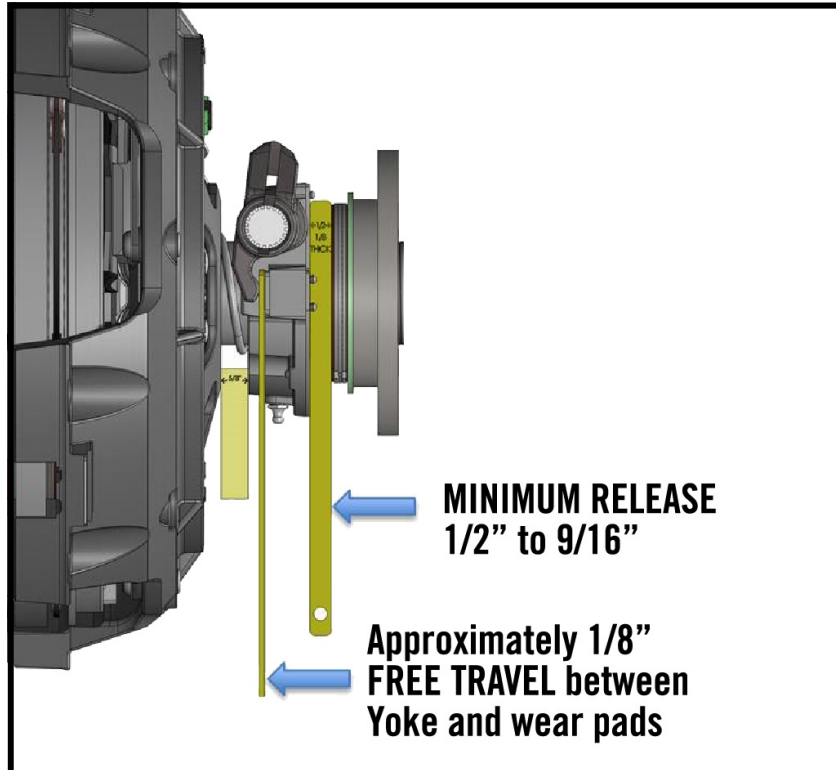
Place gauge on end with the 2.937" step on the clutch mounting surface. If the flywheel is not 2.937" deep, the clutch will not operate correctly. Replace flywheel.



Using Your Clutch Measuring Gauge

The clutch measuring gauge is used to verify the following:

1. 1/8" between yolk and wear pads (mechanical linkage only) is required. Adjust the clutch linkage to increase or decrease the yoke-to-bearing clearance. Never use the internal clutch adjustment for this purpose.
2. Minimum release of 1/2" - 9/16" gap between release bearing and clutch brake is required. If the gap is not within these tolerances, add or remove the fiber spacer or adjust the clutch as needed.



**Flywheel Gauge/Clutch Measuring Gauge
Combo-pack part number: ECATLE100BP.
To order, go to MeritorPartsOnline.com.**



Meritor Heavy Vehicle Systems, LLC
7975 Dixie Highway
Florence, KY 41042 USA
888-725-9355 U.S.
800-387-3889 Canada

MeritorPartsOnline.com
meritor.com

Insert #ECATL100-IS

©2015 Meritor, Inc.
Revised 11-15
MISC-15115 (FLOA)